

# Coolwave<sup>®</sup> 2 Control Board with Contactor Replacement Kit

**NOTE:** Retain the box used for shipping the control board and contactor to comply with the conditions of warranty.



**WARNING:** Allow only qualified personnel to perform the following tasks. Follow the safety instructions in this document and all other related documentation. A qualified and competent electrician must carry out all electrical maintenance and servicing of this equipment.



**WARNING:** This equipment operates at high voltages up to 5000 volts dc and is therefore potentially dangerous. The electrician servicing this equipment must take all precautions.



**WARNING:** Isolate the equipment at the main disconnect or lockout before removing any of the cover panels.

## New Control Board

See Figure 1. The fuses on the new control board are in different locations than on the old control board.

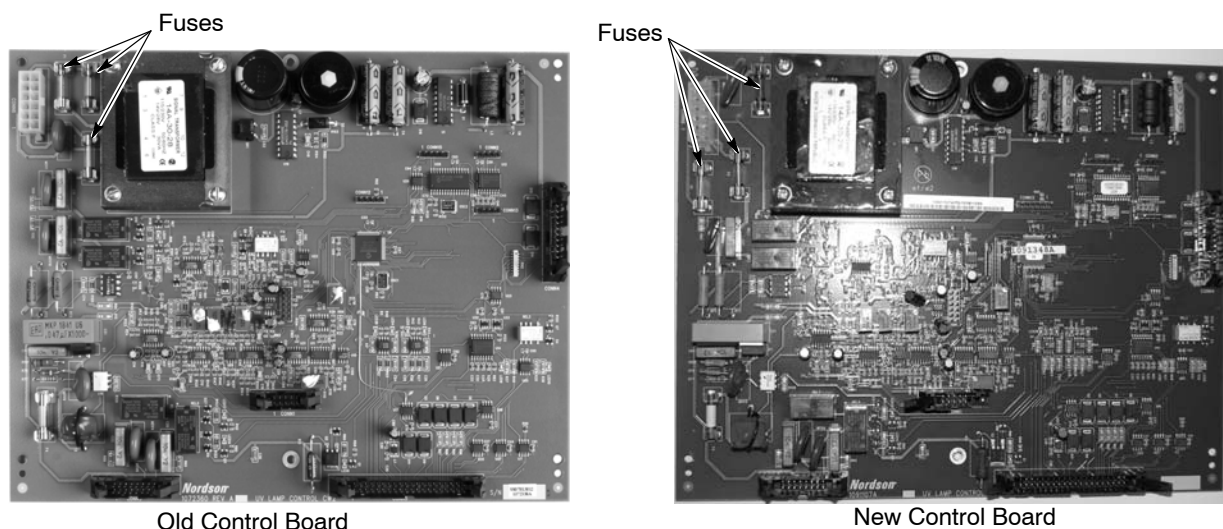


Figure 1 Old and New Versions of the Control Board

## New Contactor

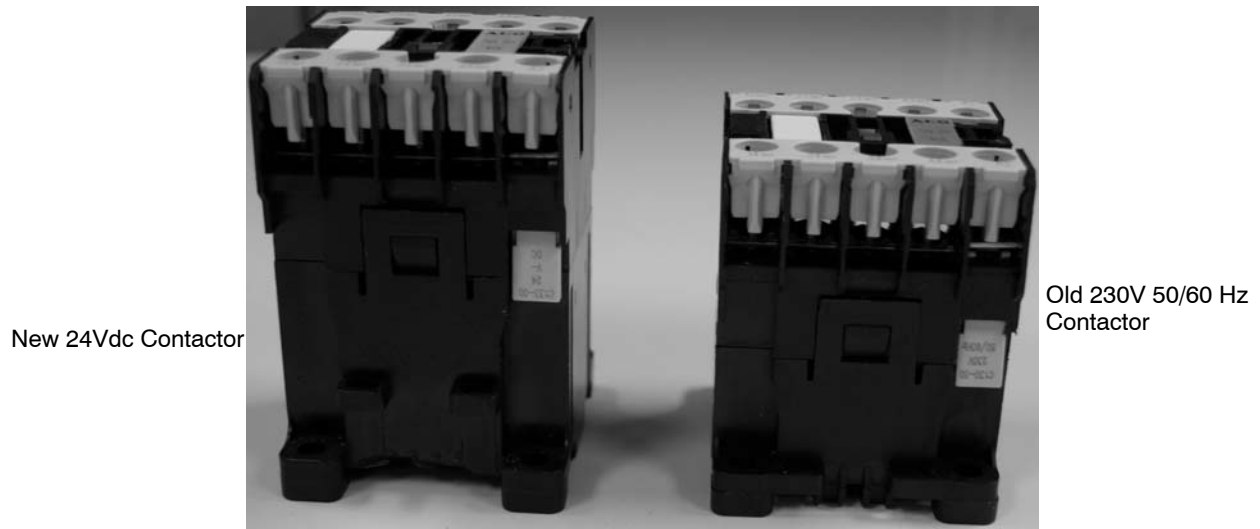


Figure 2 Old and New Versions of Contactor

## Replacing the Control Board and Contactor

### *Removing the Old Control Board and Contactor*

1. Remove electrical power from unit.
2. See Figure 3. Remove the six M5 screws from the power supply cover. Remove the cover and set it aside.

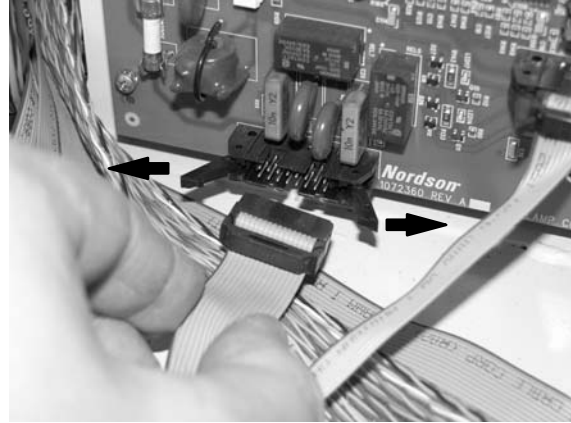


Figure 3 Remove Cover Screws

- See Figure 4. On the main control board, disconnect the five electrical connectors (power harness and ribbon cables).



Unclip Power Connector



Push Connector Clips Out to Release Ribbon Cables

Figure 4 Disconnecting Electrical Connectors

- See Figure 5. Remove the six M3 screws and washers which secure the main control board to the cabinet wall. Remove the control board and set it aside for proper disposal (see the *Control Board and Contactor Disposal* section for instructions on proper disposal).

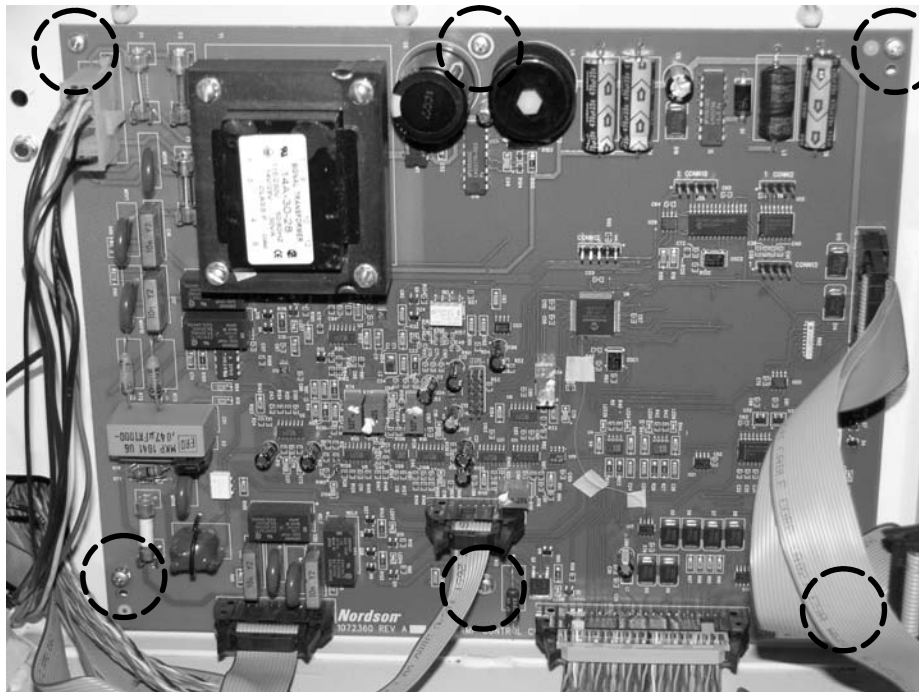


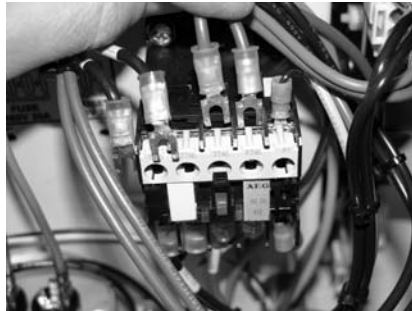
Figure 5 Remove M3 Screws from Control Board

## Removing the Old Control Board and Contactor (contd)

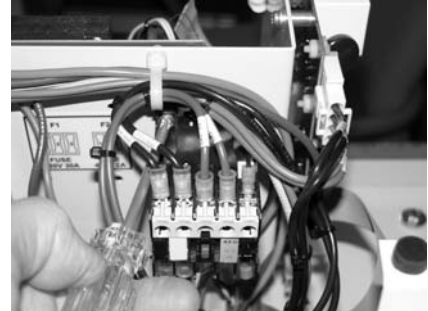
5. See Figure 6. Loosen the terminal screws to remove the cables from the contactor.
6. Remove the four M4 screws securing the old contactor to the cabinet wall. Set the contactor aside for proper disposal (see the *Board and Contactor Disposal* section for instructions on proper disposal).



Loosen Terminal Screws



Remove Cables

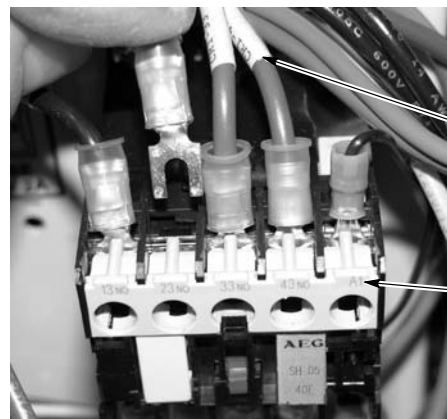


Remove Contactor Screws

Figure 6 Remove Contactor

## Installing the New Control Board and Contactor

1. See Figure 6. Mount and secure the 24Vdc replacement contactor to the cabinet wall using the four M4 screws.
2. See Figure 6 and 7. One at a time, match the wire label to the terminal label, insert the terminal forks into the terminal blocks, and tighten the terminal screws securely.



Wire Label

Terminal Label

Figure 7 Matching Wire Label to Terminal Label

3. Mount and secure the replacement control board to the cabinet wall with the six M3 screws and washers.
4. Connect the power and ribbon cables to the control board.  
**NOTE:** The connectors have a key to help guide the installation. Connectors should securely snap into place for correct installation.
5. Replace the power supply cover and secure with the six M5 screws.

## Control Board and Contactor Disposal

Dispose of equipment and materials used in operation and servicing according to local codes.

### Returns under Warranty

When returning a control board or contactor that is under warranty, the items must be sent with the original packaging in which it was received. Failure to comply with these instructions will void the warranty.

Send return items to:

UV System Group  
Nordson Corporation  
Warranty Division  
444 Gordon Ave.  
Amherst, Ohio, 44001

## Parts

To order parts, call the Nordson Finishing Customer Support Center at (800) 433-9319 or contact your Nordson representative.

### Replacement Kit

Part	Description	Note
1098890	KIT, board with contactor, Coolwave 2, standard	A
NOTE A: To upgrade to the latest board and contactor, refer to the <i>Upgrade Kits</i> parts list. Upgrade kits come with upgrade instructions.		

### Upgrade Kits

Part	Description	Note
<b>Board</b>		
1612552	KIT, main board, upgrade, no DeviceNet™, CW2-610	
1612553	KIT, main board, upgrade, with DeviceNet, CW2-610	
1612554	KIT, main board, upgrade, no DeviceNet, CW2-410	
1612555	KIT, main board, upgrade, with DeviceNet, CW2-410	
<b>Contactor</b>		
1612364	KIT, contactor upgrade, Coolwave 2	

Issued 8/18

Original copyright date 2010. Coolwave, Nordson, the Nordson logo, and Coolwave are registered trademarks of Nordson Corporation.

All other trademarks are the property of their respective owners.