

Retrofitting Kit for Versa-Spray Powder Guns

Retrofitting Manual P/N 464 941 A
– English –

AB: 102466830

AB: 102456982



NORDSON ENGINEERING GMBH • LÜNEBURG • GERMANY

Order number

P/N = Order number for Nordson products

Notice

This is a Nordson Corporation publication which is protected by copyright. Original copyright date 2001.
No part of this document may be photocopied, reproduced, or translated to another language without the prior written consent of Nordson Corporation. The information contained in this publication is subject to change without notice.

Trademarks

AccuJet, AquaGuard, Asymtek, Automove, Autotech, Blue Box, CF, CanWorks, Century, Clean Coat, CleanSleeve, CleanSpray, Compumelt, Control Coat, Cross-Cut, Cyclo-Kinetic, Dispensejet, DispenseMate, Durafiber, Durasystem, Easy Coat, Easymove Plus, Econo-Coat, EPREG, ETI, Excel 2000, Flex-O-Coat, FlexiCoat, Flexi-Spray, Flow Sentry, Fluidmove, FoamMelt, FoamMix, Helix, Horizon, Hose Mole, Hot Shot, Hot Stitch, Isocoil, Isocore, Iso-Flo, JR, KB30, Little Squirt, Magnastatic, MEG, Meltex, MicroSet, Millenium, Mini Squirt, Moist-Cure, Mountaingate, MultiScan, Nordson, OmniScan, Opticoat, Package of Values, Pattern View, PluraFoam, Porous Coat, PowderGrid, Powderware, Pro-Flo, ProLink, Pro-Meter, Pro-Stream, PRX, RBX, Rhino, S. design stylized, Saturn, SC5, Select Charge, Select Coat, Select Cure, Slautterback, Smart-Coat, Spray Squirt, Spraymelt, Super Squirt, Sure Coat, System Sentry, Tela-Therm, Trends, Tribomatic, UniScan, UpTime, Veritec, Versa-Coat, Versa-Screen, Versa-Spray, Watermark, When you expect more. are registered trademarks – ® – of Nordson Corporation.

ATS, Aerocharge, Auto-Flo, AutoScan, BetterBook, Chameleon, CanNeck, Check Mate, COLORMAX, Control Weave, Controlled Fiberization, CPX, E-Nordson, EasyClean, Eclipse, Equi-Bead, Fillmaster, Gluie, Ink-Dot, Iso-Flex, Kinetix, Maxima, MicroFin, Minimeter, Multifil, OptiMix, PluraMix, Primarc, Prism, Process Sentry, PurTech, Pulse Spray, Seal Sentry, Select Series, Sensomatic, Shaftshield, Spectral, Spectrum, Sure Brand, Swirl Coat, Vista, Walcom, 2 Rings (Design) are trademarks – ® – of Nordson Corporation.

Designations and trademarks stated in this document may be brands that, when used by third parties for their own purposes, could lead to violation of the owners' rights.

1. Safety



WARNING: Allow only qualified personnel to perform the following tasks. Observe and follow the safety instructions in this document and all other related documentation.

2. Parts Needed for Retrofitting

Retrofitting from the variation *Chamber fastened to the system* (standard) to the variation *Chamber on a separate frame* is described here.

Designation	Position	Order number	Note
Adapter kit	2, Fig. 4	P/N 157 094	The standard adapter is part of the adapter kit P/N 157 094. Also refer to separate manual <i>Versa-Spray® Purge Adapter Kits</i>
Adapter	–	P/N 140 907	Replaces the standard adapter
Grounding cable	1, Fig. 4	P/N 268 216	–
Powder recovery hose	8, Fig. 4	P/N 634 739	Length must be adapted on site
Powder hose	3, Fig. 4	P/N 783 309	
Air hose, blue	4, Fig. 4	P/N 788 669	Becomes two pieces, 4.1 and 4.2
Y-piece	6, Fig. 4	P/N 418 507	–

3. Retrofitting

Als refer to separate manuals for individual components.



WARNING: Disconnect system from the line voltage.

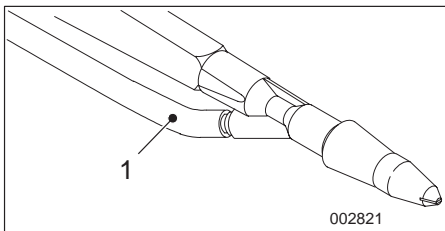


Fig. 1

1. Detach powder hose (1, Fig. 1) from gun and powder pump.
2. Detach powder recovery hose from chamber and pump.
3. Detach chamber (5, Fig. 4) from the system (9, Fig. 4) and then attach it to the separate frame.

4. Adjust the length of the included powder recovery hose (8, Fig. 4) so that it is as short as possible, then attach it to the chamber and the pump for powder recovery.
5. If the grounding cable (1, Fig. 4) has been disconnected: Ground frame.
Do this by connecting *GROUND* on the system's connecting panel to the clamping screw.
6. Extract hose adapter from the gun (Fig. 2) and save for the version *Chamber fastened to the system*.

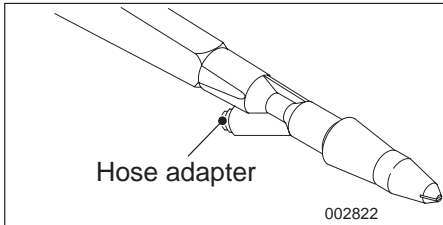


Fig. 2

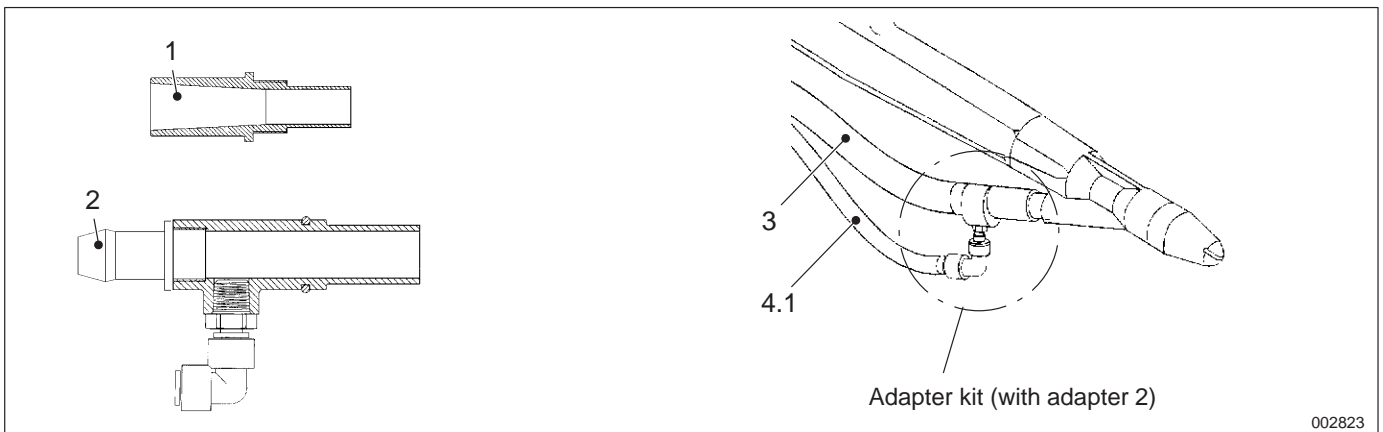


Fig. 3

7. Remove standard adapter (1, Fig. 4) from adapter kit P/N 157 094.
8. Insert adapter (2, Fig. 4) P/N 140 907 in adapter kit.
9. Install adapter kit.
10. Adjust the length of the included powder hose (3, Fig. 4) such that it is as short as possible, then attach it to the gun and the powder pump.

11. Disconnect air hose (7, Fig. 4) from connection A on the pump.
12. Connect air hose section (4.1, Fig. 4) to gun.
13. Connect hose pieces (4.1, 4.2, Fig. 4) to Y-piece (6, Fig. 4).
14. Connect hose piece (4.2, Fig. 4) to connection A on the pump.
15. Connect air hose (7, Fig. 4) to Y-piece.
16. Repeat the steps for the second gun.

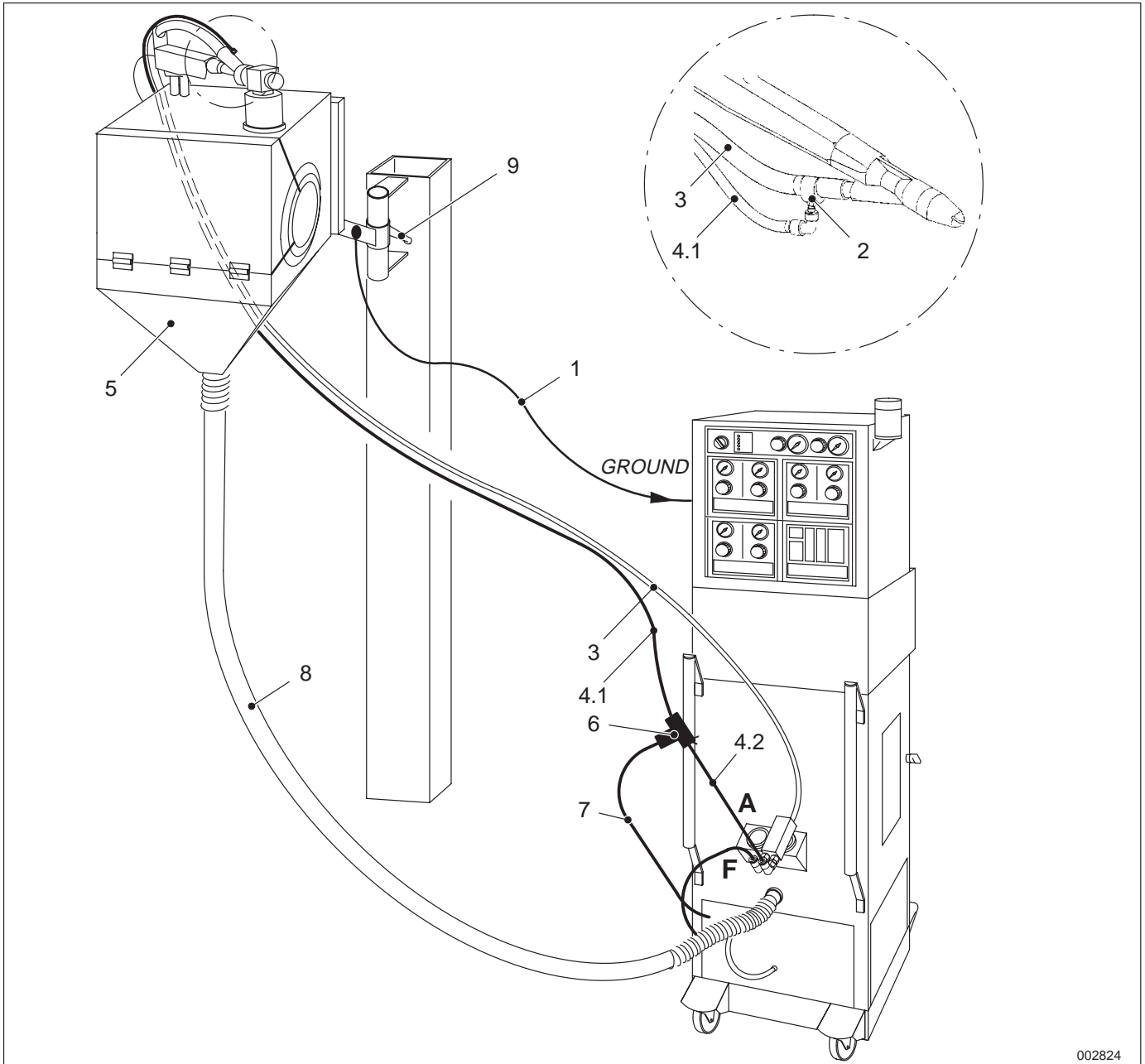


Fig. 4

002824

