

# Tribomatic® Modular Pump with Adapter



**WARNING:** Allow only qualified personnel to perform the following tasks. Follow the safety instructions in this document and all other related documentation.

## 1. Introduction

See Figure 1. This kit includes a modular Tribomatic powder pump and adapter for use with the Tribomatic automatic powder spray gun. The adapter is used to install the pump onto a Tribomatic pump mount.

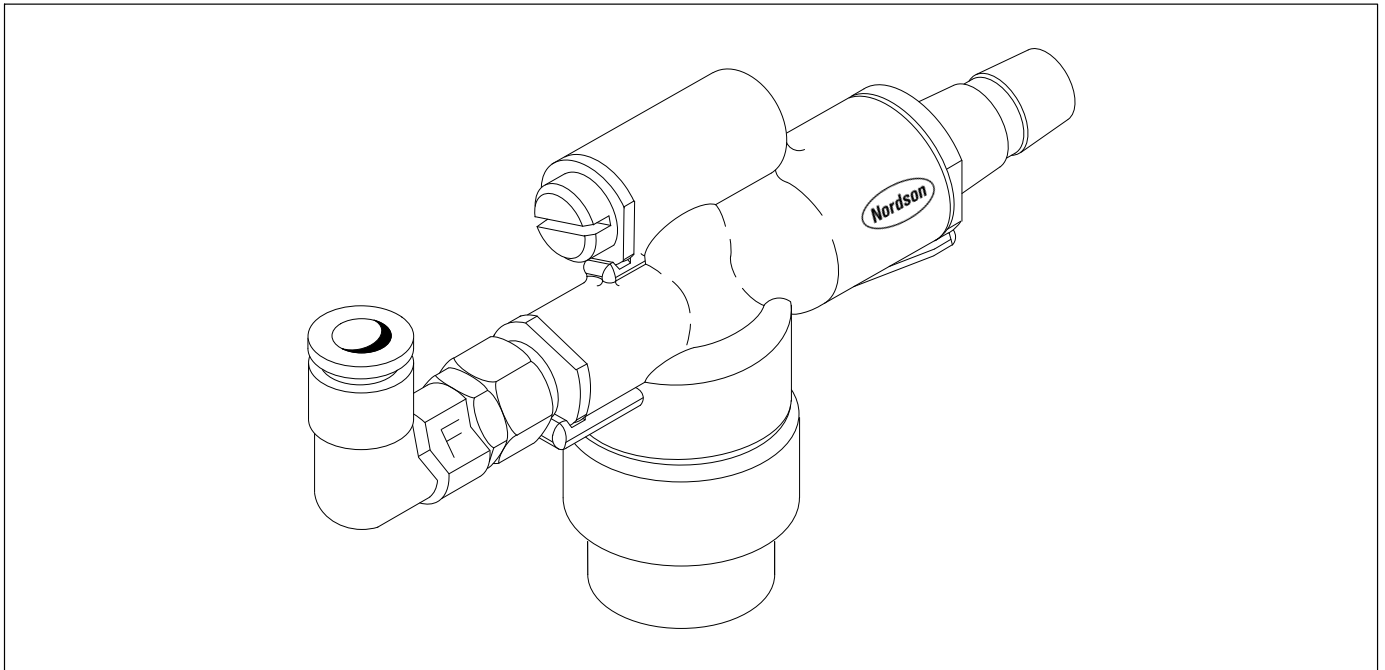


Fig. 1 Tribomatic Modular Pump with Adapter

---

## 2. Installation

---



**WARNING:** Allow only qualified personnel to perform the following tasks. Follow the safety instructions in this document and all other related documentation.

1. If you install this kit into an existing system, disconnect the air tubing and powder feed hose from the pump. Disconnect the pickup tube and remove the pump from its mount on the feed hopper.
2. See Figure 2. Install the pickup tube into the pickup tube holder (20).
3. Thread the pickup tube holder (20) into the adapter (16). Press the adapter into the pump mount with a slight twisting motion.
4. Install the pump (8) on the adapter. Connect the air tubing and powder feed hose to the pump.

---

## 3. Maintenance

---



**WARNING:** Do not use compressed air to blow powder off skin or clothing. Compressed air injected under the skin can cause serious injury or death.

### **Daily**

1. Disconnect the atomizing air and flow-rate air tubing.
2. Make sure the booth exhaust fan is running.

**NOTE:** Always blow air from the pump end into the booth.

3. Clean the pump body by blowing air from the pump to the gun.
4. Clean the powder feed hose.

***Routine***

Perform routine maintenance as necessary.

1. Disassemble and thoroughly clean the pump and the pump adapter components.



**CAUTION:** Do not immerse O-rings in solvent. Solvents cause O-rings to swell. Do not use solvent to clean the pump body.



**CAUTION:** Do not scrape parts with sharp objects. Burrs or scratches on contact surfaces may occur, which may contribute to powder build-up or impact fusion.

2. Blow the parts clean with low pressure compressed air.
3. Wipe the parts with a clean, lint free cloth. If necessary, remove the O-rings and moisten the cloth with water or isopropyl alcohol.
4. See Figure 1. When replacing the nozzle and throat holder, line up the parts so that each flat is facing up.
5. Inspect the powder feed tubing and replace any pieces that are worn or damaged. If powder is impact-fused inside the tubing, replace the tubing.

## 4. Parts

See Figure 2.

Item	Part	Description	Quantity	Note
—	635598	Pump, Tribomatic, modular, with adapter	1	
1	972126	• Elbow, male, 6 mm tube x 1/8 in. unifit	1	
2	939109	• Marker, clip, f (flow)	1	
3	224727	• Nozzle, air, flow	1	
4	940207	• O-ring, silicone, conductive, 0.437 x 0.562 in.	1	
5	940129	• O-ring, silicone, conductive, 0.375 x 0.500 in.	4	
6	224735	• Plug, shutoff, atomizing	1	
7	940010	• O-ring, silicone, conductive, 0.312 x 0.437 in.	1	
8	224726	• Body, pump, powder, modular	1	
9	635016	• Throat, 3.5 mm, PTFE	1	
10	940015	• O-ring, silicone, conductive, 0.562 x 0.687 in.	1	
11	635029	• Holder, throat, European version	1	
12	940177	• O-ring, silicone, conductive, 0.687 x 0.812 in.	1	
13	638894	• Tube, wear, 8.6 x 6.6 x 28 mm, PTFE	AR	A
14	630025	• O-ring, 25.12 x 1.78 in., EPDM	2	
15	635011	• Adapter	1	
16	941185	• O-ring, silicone, conductive, 0.875 x 1.062 in.	1	
17	630043	• Holder, pickup tube	1	

NOTE A: Measured in increments of 0.03 m.

AR: As Required

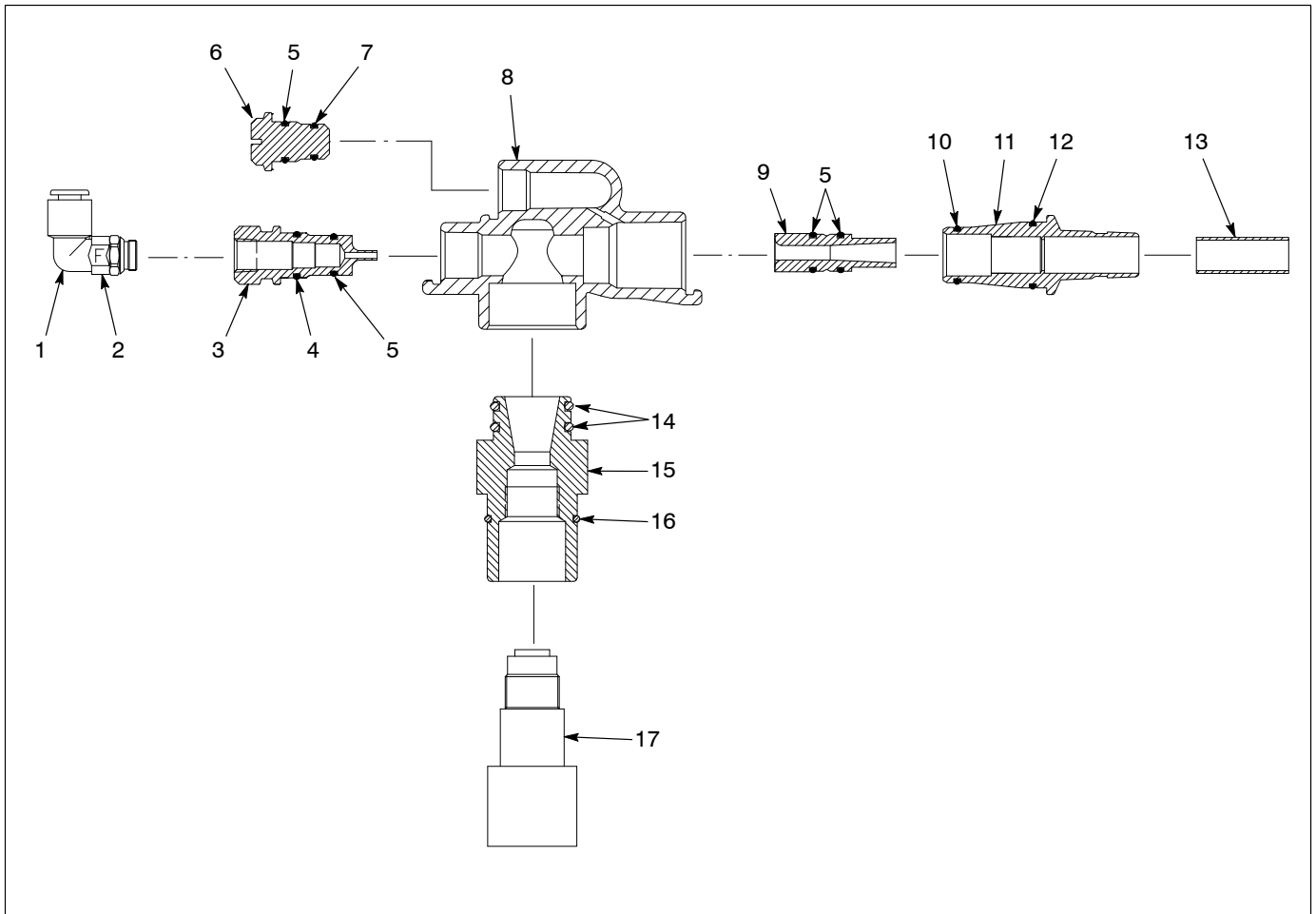


Fig. 2 Tribomatic Modular Pump with Adapter

Original copyright date 2000. Nordson, the Nordson logo, and Tribomatic are registered trademarks of Nordson Corporation.

