

Versa-Spray IC Replacement Kit

1. Introduction

This document provides instructions for replacing the Integrated Circuit (IC) chips on your Versa-Spray or Versa-Spray II Controller circuit board.

See Figure 1. Figure 1 shows the placement of the IC chips (2) on a Versa-Spray II Controller circuit board (1). If you have a Versa-Spray Controller, Figure 1 will still provide an accurate reference.

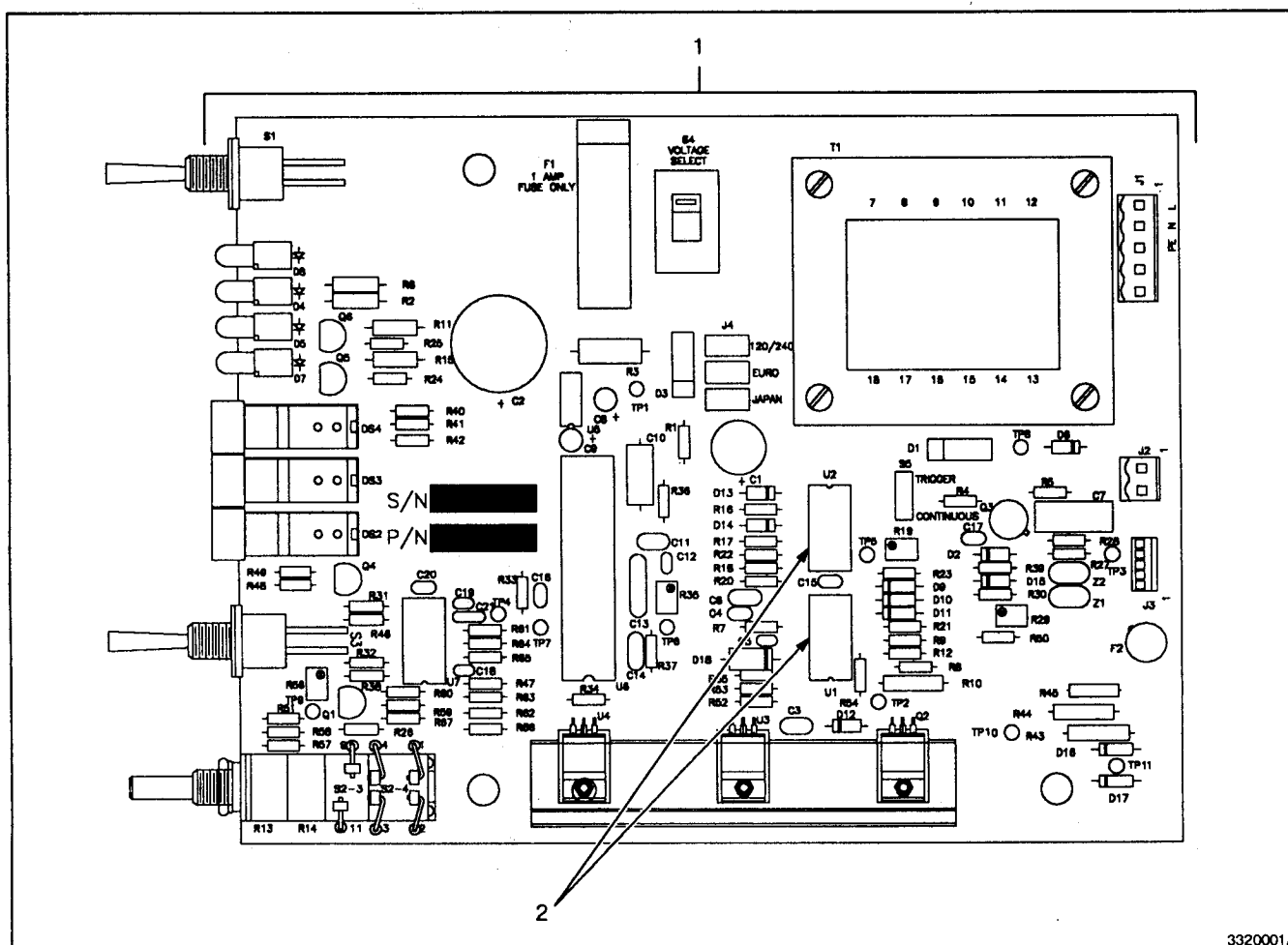


Fig. 1 Versa-Spray II circuit board

1. Versa-Spray II circuit board
2. IC chip location

2. Replacing the IC Chips



WARNING: Allow only qualified personnel to perform the following tasks. Observe and follow the safety instructions in this document and all other related documentation.



WARNING: The Versa-Spray and Versa-Spray II systems are electrically-charged. Be sure to turn off and lock out all electrical power before performing any maintenance procedures. Refer to your system manual for more safety information.



CAUTION: Be sure to touch a grounded metal surface before handling the ICs. Otherwise, you could damage the ICs.

1. Position the circuit board so that you can read the silk-screening. The ICs are located below the transformer just to the right of the center of the board, as shown in Figure 1.
2. See Figure 2. Remove U1 (CA723) from its socket, taking care not to bend the pins.
3. Replace it with the new CA723 as shown in Figure 2.
4. Remove U2 (LM339) from its socket, taking care not to bend the pins.
5. Replace it with the new LM339 as shown in Figure 2.

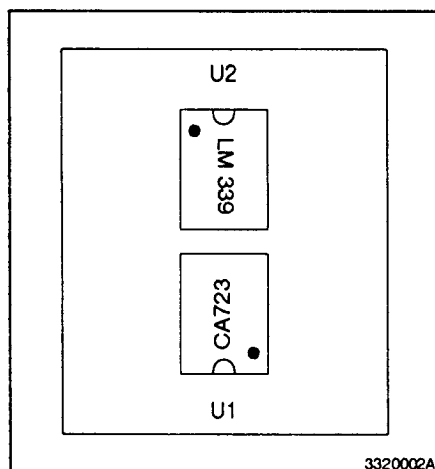


Fig. 2 IC chip placement on the circuit board

Nordson and the Nordson logo are registered trademarks of Nordson Corporation.