

AZO[®] 240 Rotary Sieve

Description

The AZO[®] Rotary Sieve filters fresh and reclaimed powder, discharging clumps and other particles that are too large to pass through the sieve screen into a scrap bucket. The usable reclaimed and fresh powder falls into the feed hopper. A vent tube connects the accumulator to the color module. Venting prevents the transfer pump air from blowing the usable powder through the sieve screen and into the scrap bucket.

Micron mesh screens are available, including 20, 40, 60, 70, 80, 100, 120, 140 and 150 mesh. The numbered rating for mesh screens refers to the number of square openings across one linear square inch of the mesh screen. Therefore, as the number size increases, the particle size able to pass through the screen decreases.

A three-phase AC electric motor drives the sieve rotor. A variety of voltage and frequency ratings are available upon request.

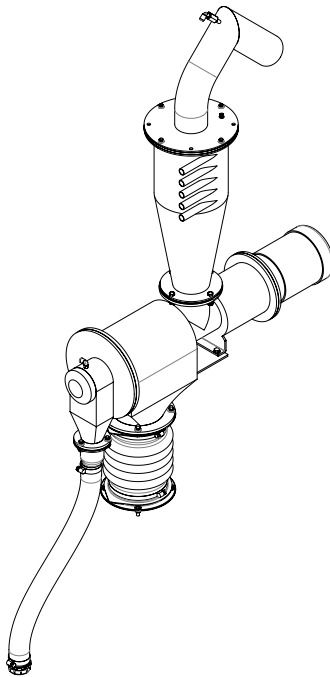


Figure 1 AZO Rotary Sieve

Installing Sieve Screen Cloth

See Figure 2.

1. Moisten the screen cloth (4) to allow easier stretching and conformity.
2. Place the long seam of the screen cloth below the rod with the contact spring (1).
3. Locate the arrow on the screen basket that indicates the direction of the machine's rotation. Place the end of the seam in the same direction the machine will rotate.
4. Fasten the screen cloth with hose clamps (3) on each end of the screen basket, ensuring the screen is not over-stretched.
5. Tighten the nuts (2) on each end of all rods on the screen basket as necessary.

NOTE: Allow the screen fabric to dry completely before filtering material. The screen cloth may tear if the rotary sieve is operated while the fabric is still wet.

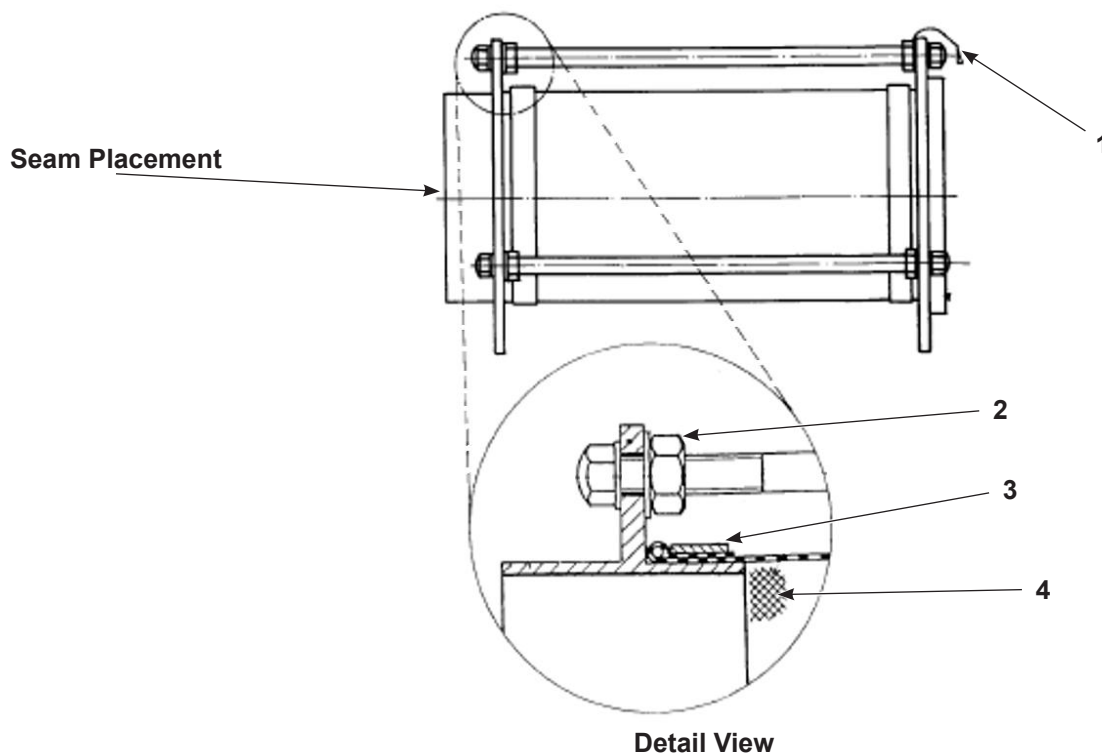


Figure 2 Sieve Basket Assembly

Parts

AZO Components and Accessories

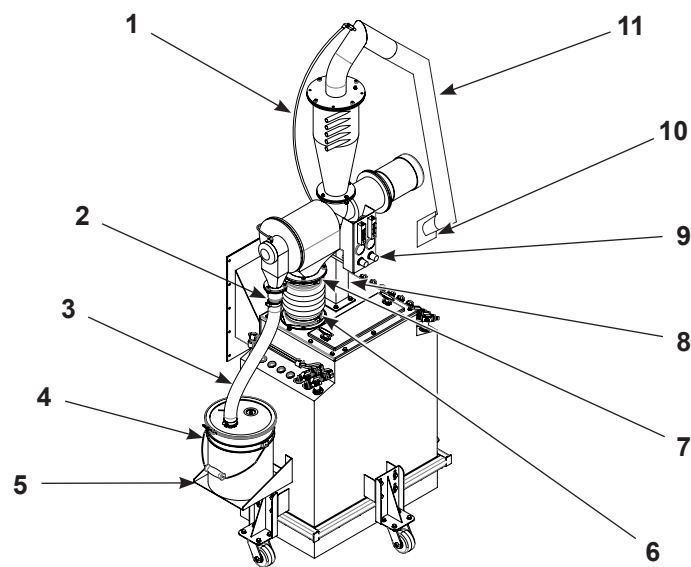


Figure 3 HTM Feed Hopper

See Figure 3.

Item	Part	Description	Quantity	Note
—	1622313	SIEVE, rotary, AZO E240, 230/460	1	A
1	900740	• TUBING, polyurethane, 10/6.5-7 mm, 55 in.	1	
2	176376	• ADAPTER, 3-1/2-in. to 2-in.	1	
3	242402	• HOSE, flexible, 10 ft., 2 in. ID	1	
4	144837	• BUCKET, scrap, sieve, 5 gal	1	
5	174805	• PLATFORM, scrap bucket	1	
6	245718	• CONNECTOR, spout	1	
7	970966	• CLAMP, hose, 2 ½ in.	1	
8	183930	• POST, support, AZO	1	
9	226703	• SERVICE KIT, air volume control	1	
10	174644	• VENT STUB, color module, 3 ½ in.	1	
11	243052	• HOSE, flexible, 3 ½ in. x 10 ft.	1	
NS	176336	• STARTER, sieve motor, 3 phase, E240	1	
NS	970968	• CLAMP, hose, 6 in.	1	
NS	970970	• CLAMP, hose, 3 3/4	1	
NS	176376	• ADAPTER, 3 ½ in. - 2 in.	1	

NOTE: A. Does not include cables, bucket, or other accessories.

End Cap Assembly

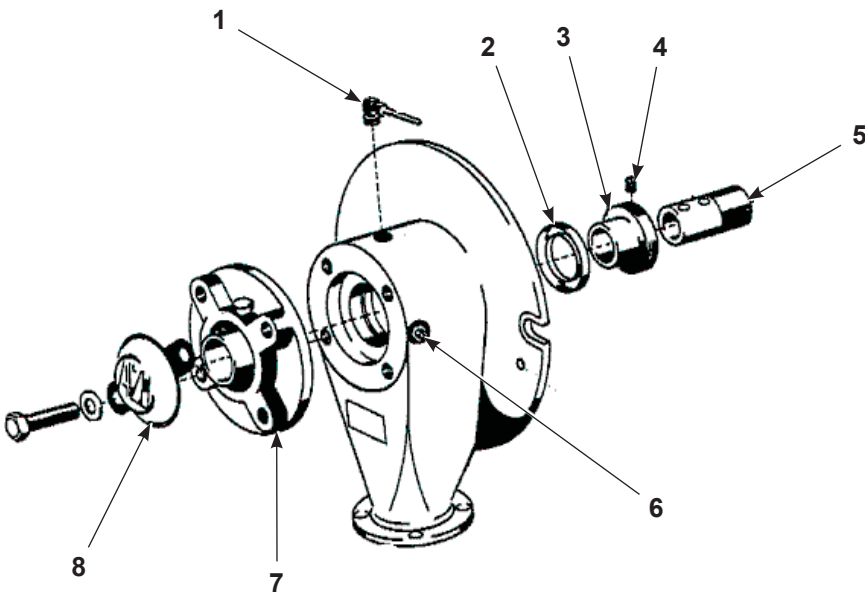


Figure 4 AZO End Cap Assembly

See Figure 4.

Item	Part	Description	Quantity	Note
1	339276	PIPE, union fitting, E240 drive unit	1	A
2	174635	SEAL, lip, shaft, E240/460	1	
3	174642	SLEEVE, bearing, E240	1	
4	1066756	SCREW, set, M6 x 10	1	
5	1033055	SHAFT, extension	1	
6	339217	NIPPLE, grease, drive unit	1	
7	174639	BEARING, flange	1	
8	339322	COVER, housing, front	1	

Housing and Motor

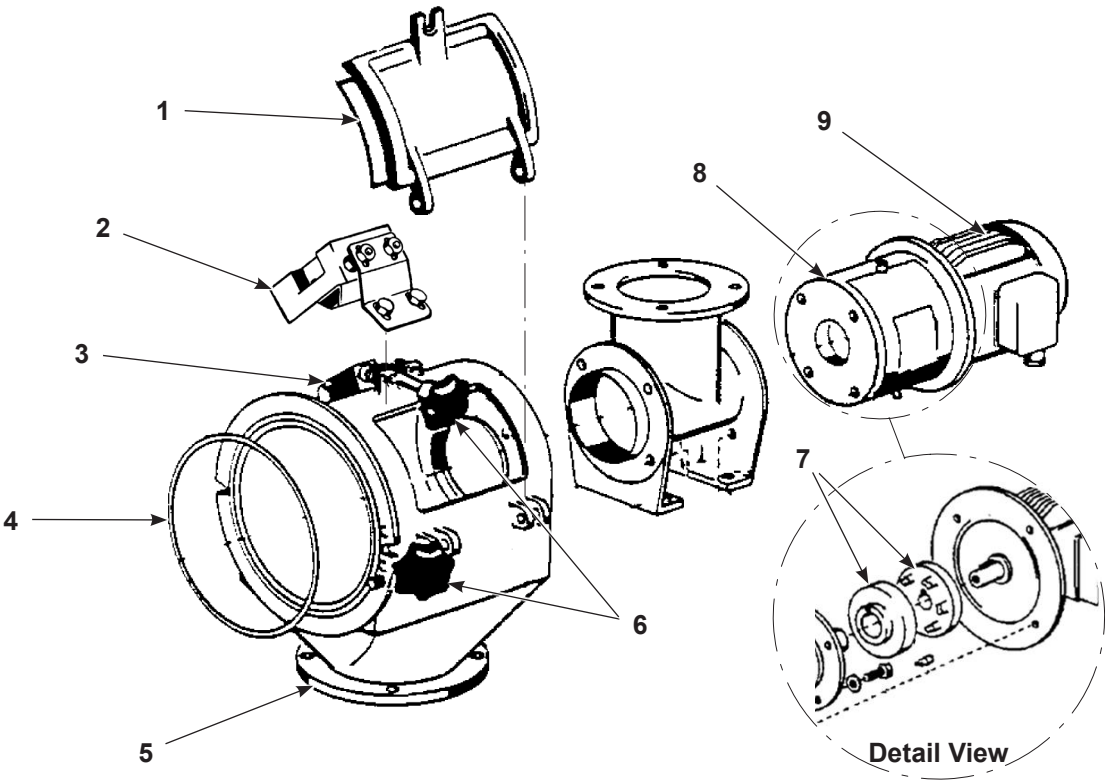


Figure 5 AZO Rotary Sieve

See Figure 5.

Item	Part	Description	Quantity	Note
1	174616	GASKET, door	—	A
2	1607935	KIT, sieve limit, receptacle	1	
3	1607919	KIT, hopper, low voltage plug	1	
4	339325	SEAL, gasket, front cover	1	
5	183929	RING, adapter, 6 inch, AZO	1	
6	174643	KNOB, star, AZO, E240	2	
7	174640	SHAFT, coupling, AZO, E240/360	1	
8	339327	HOUSING, clutch, U.S., E-240-B1	1	
9	226680	MOTOR, 230/460 VAC, 3 phase, 60 Hz	1	

NOTE: A. Gasket is sold by the yard.

Steel Shaft Assembly

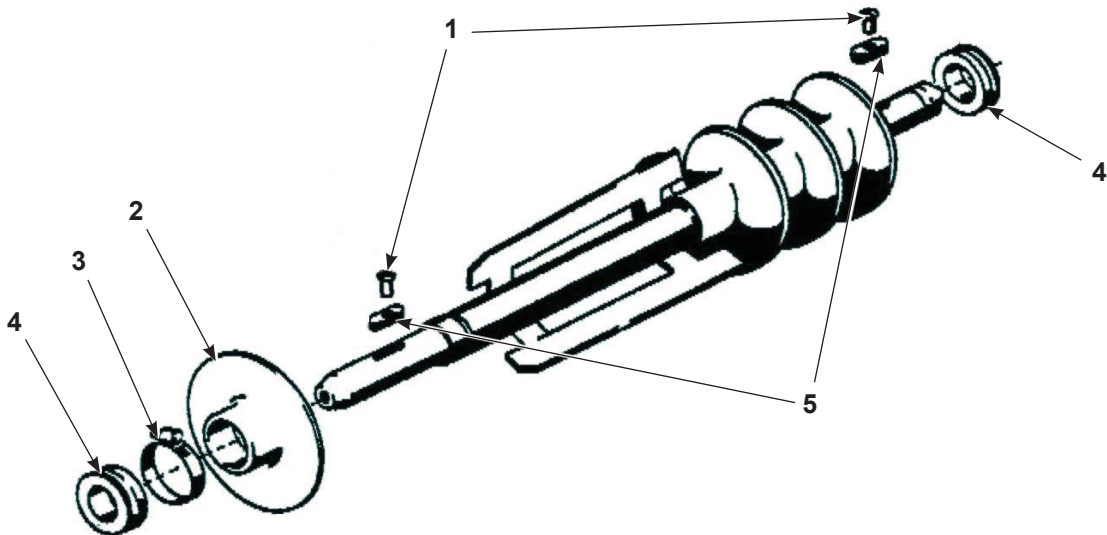


Figure 6 AZO End Cap Assembly

See Figure 6.

Item	Part	Description	Quantity	Note
—	184067	ROTOR, assembly	1	
1	339275	• SCREW, countersunk	2	
2	174638	• PLATE, baffle	1	
3	339139	• CLAMP, hose	1	
4	174636	• SEAL, V-Ring	2	
5	339274	• KEY, replacement	1	

Screen Basket

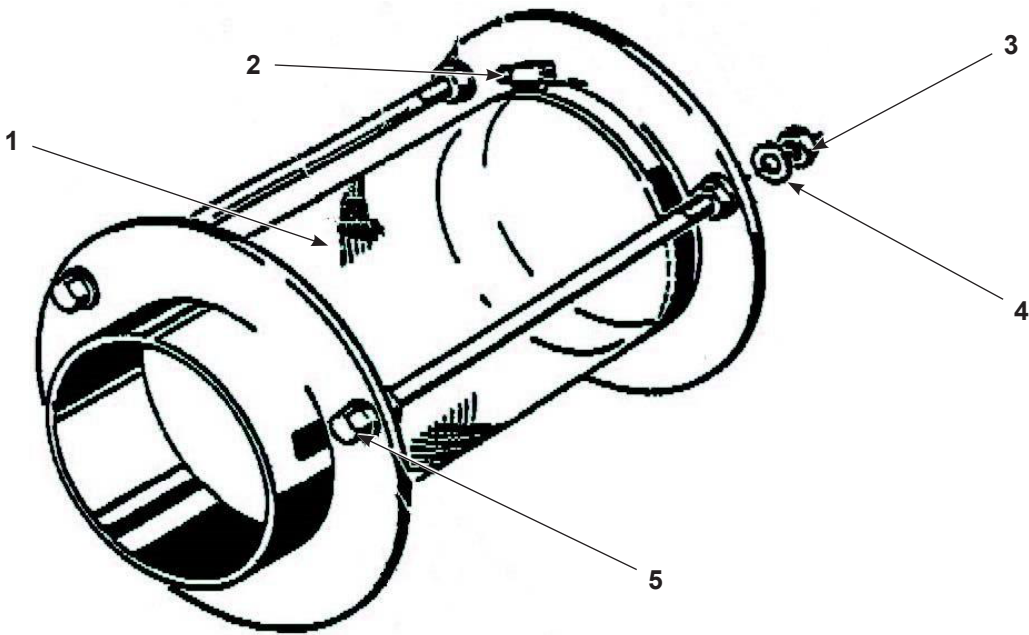


Figure 7 Sieve Screen Basket

See Figure 7.

Item	Part	Description	Quantity	Note
—	174630	FRAME, screen, AZO, E240	1	
1	174617	• SCREEN, mesh, 20	1	
1	174618	• SCREEN, mesh, 40	1	
1	168213	• SCREEN, mesh, 60	1	
1	174619	• SCREEN, mesh, 70	1	
1	174620	• SCREEN, mesh, 80	1	
1	174621	• SCREEN, mesh, 100	1	
1	174622	• SCREEN, mesh, 120	1	
1	174623	• SCREEN, mesh, 140	1	
1	174627	• SCREEN, mesh, 150	1	
2	339258	• CLAMP, hose, E240	1	
3	339256	• NUT, hex	1	
4	339257	• WASHER, M8	1	
5	339259	• COVER, nut, E240	1	

Accumulator

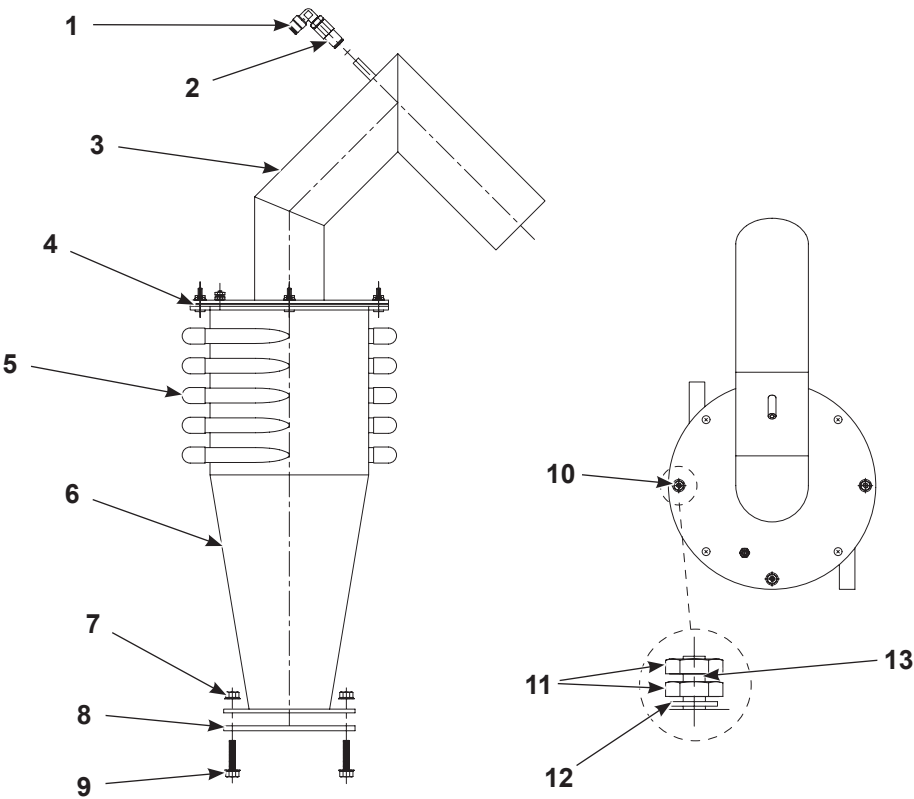


Figure 8 Sieve Screen Basket

See Figure 8.

Item	Part	Description	Quantity	Note
—	1622054	ACCUMULATOR, 10 port, 8 inch	1	
1	972125	CONN, male, elbow, 10mm T X ¼ universal	1	
2	129326	CONNECTOR, female	1	
3	1622008	LID W/VENT, accumulator, 10 port, 8 inch	1	
4	174615	GASKET, lid, 10 inch, 10 port, accumulator	1	
5	1104897	CAP, vinyl, ¾ - 1⅜, black	AR	
6	1622009	BODY, accumulator, 10 port, 8 inch	1	
7	336281	NUT, hex, serrated, ⅝-18, zinc	4	
8	111687	GASKET, rotary sieve, inlet	1	
9	1097319	SCREW, hex, serrated, ⅝-18 X 1.00, zinc	4	
10	1603235	NUT, hex, serrated, ¼ 20, steel, zinc plated	4	
11	984129	NUT, hex, machine, #10-32, brass	2	A
12	983021	WASHER, flat, .203 X .406 X .040, brass	1	A
13	981168	SCREW, pan, 10-32 X .750, brass	1	A

NOTE: A. Parts are used for grounding.

AR: As Required

Retrofit Kits

See Figure 9 and Figure 10, and the following parts lists. For systems that do not have a sieve already installed, use the following kits for sieve connections.

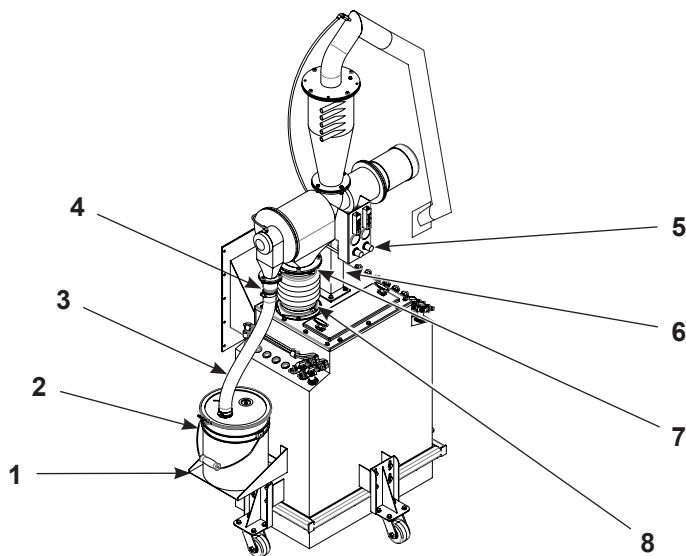


Figure 9 Retrofit Kits

Hopper Sieve Install Kit

Item	Part	Description	Quantity	Note
—	1624236	KIT, install, hopper, sieve	—	A
1	-----	• SCRAP BUCKET PLATFORM	1	
2	-----	• BUCKET, scrap, sieve, 5 g	1	
3	-----	• HOSE, flexible, 10 ft, 2 in. diameter	1	
4	-----	• ADAPTER, 2 in.	1	
5	-----	• SERVICE KIT, air volume control	1	
7	-----	• CLAMP, hose	2	
8	-----	• CONNECTOR, spout	1	
NS	-----	• CLAMP, hose, 6 in.	2	
NS	-----	• TUBE, 6 mm-OD, polyurethane, flame retardant, blue	6	

NOTE: A. Includes powder and pneumatic components for connecting to sieve.

AZO Sieve Retrofit

Item	Part	Description	Quantity	Note
—	1623613	KIT, AZO, sieve, retrofit, 460 V, 575 V	—	A
NS	-----	• KIT, hopper, high voltage plug	1	
NS	-----	• KIT, hopper, low voltage plug	1	
NS	-----	• KIT, sieve motor, receptacle	1	
NS	-----	• KIT, motor starter, sieve, 3 phase, 460 V, 575 V	1	
NS	-----	• KIT, sieve limit, receptacle	1	
NOTE: A. Includes electrical components for connection to sieve.				

Cover Assemblies

Item	Part	Description	Quantity	Note
—	1623615	COVER, assembly, HTM 16	—	
—	1623611	COVER, assembly, HTM 26	—	
—	1623612	COVER, assembly, HTM 36	—	
6	-----	• POST, support, AZO	1	

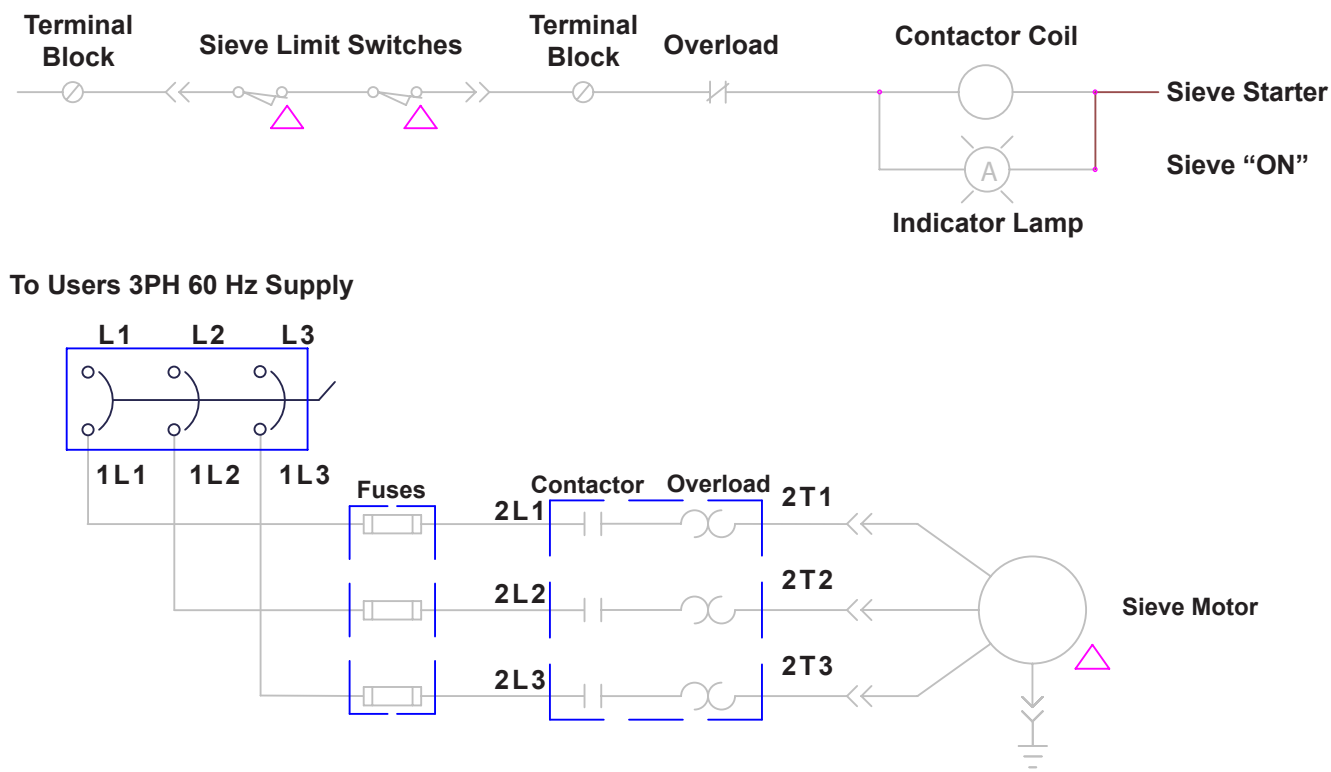


Figure 10 Diagrams for Motor Starter Kit