

# Encore® Engage Controller Optional Air Prep Kit

## Description

This kit provides an air preparation unit that contains a regulator with a 5 micron filter, which is used to purify the air feeding an external Encore® Engage Controller. The air prep unit is mounted to the bottom flange on the Encore Engage External Controller. The 16 mm airline is connected to the air inlet fitting on the controller.

It can also be used on the Encore Enhance Controller, if mounted to an external structure.

## Installation



**WARNING:** Allow only qualified personnel to perform the following tasks. Follow the safety instructions in this document and all other related documentation.

For Encore Engage External Controller. See Figure 1.

1. Remove rear cover panels.
2. Mount the air prep unit to the mounting holes (4) in the lower rear flange of the controller using the M8 screws (1) and nuts (5) supplied in the kit.
3. Connect the air prep unit outlet fitting (2) to the controller air inlet fitting (7) using the 16 mm tubing (6) supplied in the kit.
4. Attach the external air supply to the air prep unit inlet fitting (3), using the supplied connectors as required.
5. Re-install rear cover panels.

Installation to the Encore Enhance Controller will follow the same procedure, except that the air prep unit will need to be mounted to an external structure.

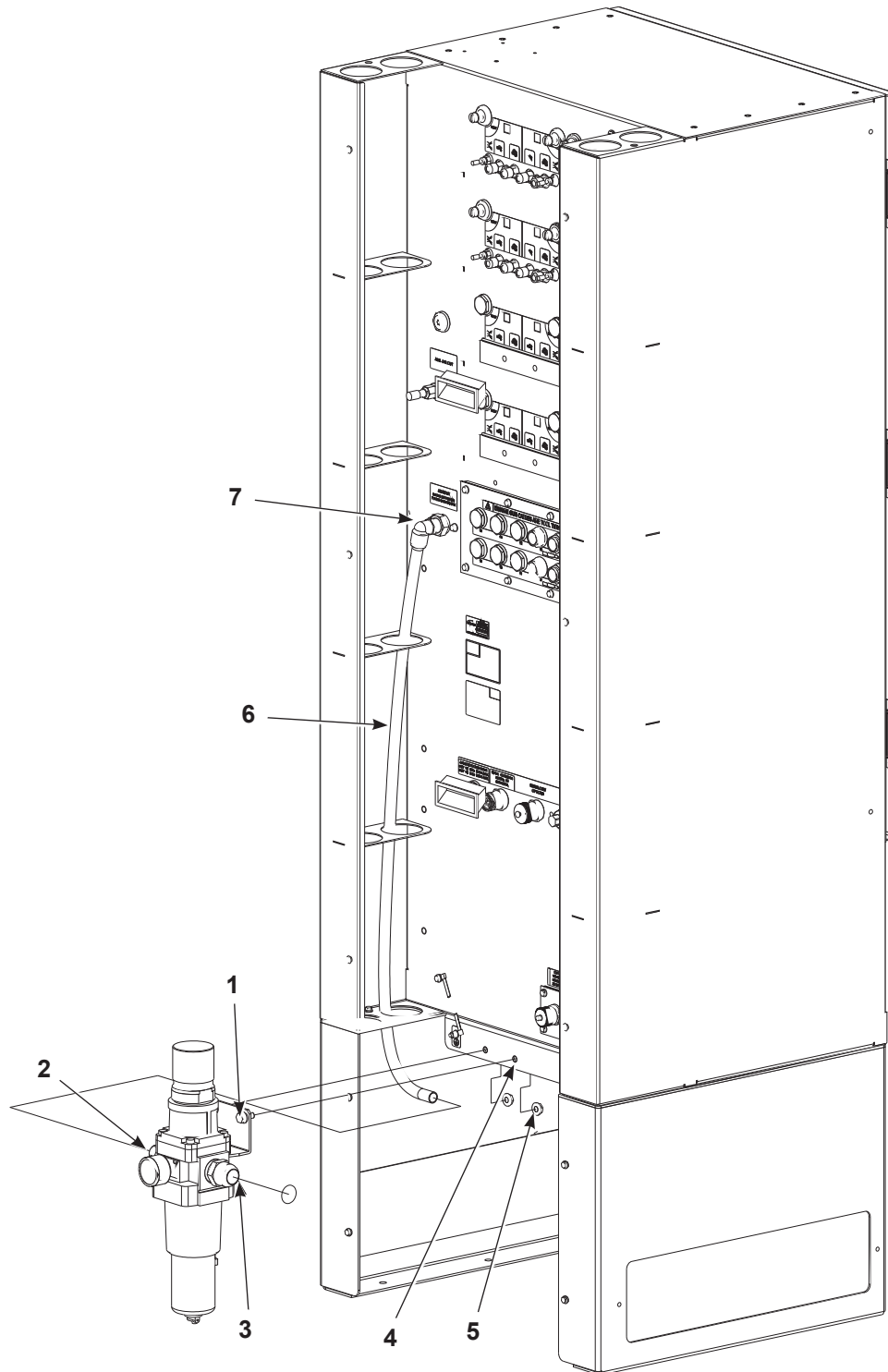


Figure 1 Encore Engage External Controller with Optional Air Prep Kit

- |                                 |                    |                                 |
|---------------------------------|--------------------|---------------------------------|
| 1. M8 serrated hex screw        | 4. Mounting holes  | 6. 16 mm tubing                 |
| 2. Air prep unit outlet fitting | 5. M8 serrated nut | 7. Controller air inlet fitting |
| 3. Air prep unit inlet fitting  |                    |                                 |

Parts

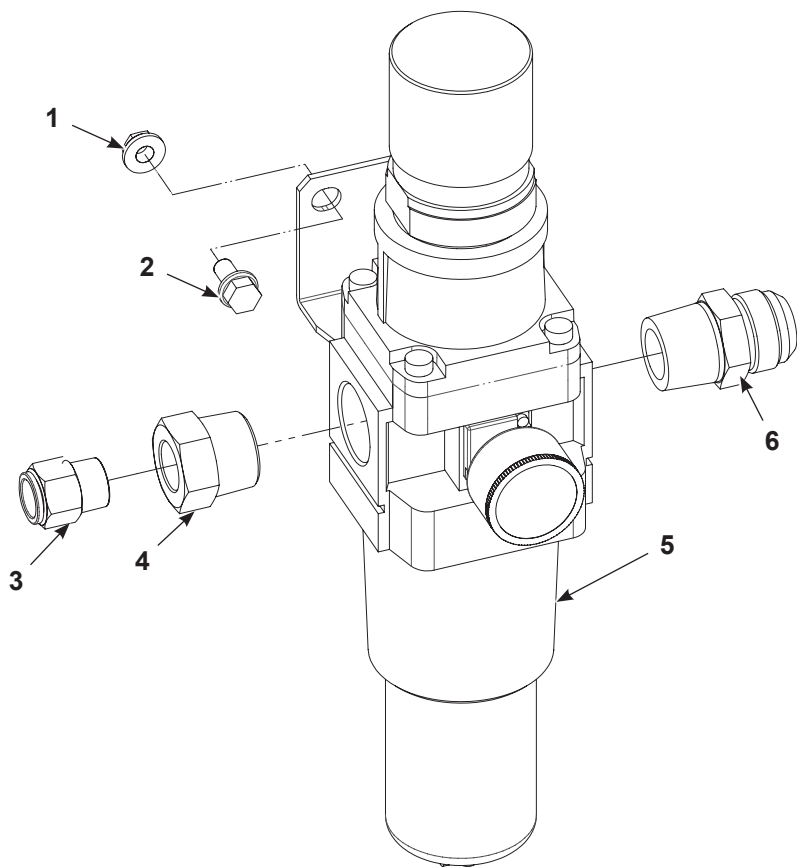


Figure 2 Air Prep Unit for Engage Controllers

Item	Part	Description	Quantity	Note
	1619554	KIT, air prep unit, Encore Engage	1	
1	-----	• NUT, hex, flanged, serrated, M8	2	
2	-----	• SCREW, hex, serrated, M8 x 26, steel, zinc	2	
3	-----	• CONNECTOR, male, 16 mm T x 1/2 RPT, with seal	1	
4	-----	• BUSHING, reducing, 1 NPT x 1/2 NPT	1	
5	-----	• FILTER, REGULATOR, gage, 5 micron, 100 cfm, 1 NPT	1	
NS	1614705	• • FILTER ELEMENT, 5 micron	1	
6	-----	• CONNECTOR, male	1	
NS	1091201	• 16mm TUBING, 3 ft	1	
NS: Not Shown				

Issued 09/22

Original copyright date 2020. Nordson and the Nordson logo are registered trademarks of Nordson Corporation.

All other trademarks are the property of their respective owners.