

Encore[®] Lance Electrode and Sleeve Kit

Introduction

This instruction sheet covers the Encore 150-, 300-, 450-, and 600-mm Lance Electrode and Sleeve Kit. These kits can be used on both Encore and Encore LT manual powder spray guns.

Installation

See Figure 1.

1. Remove the lance extension housing (5) from the spray gun (1).
2. Pull the electrode assembly (2), (3), (4), (6) out of the lance housing (5).
3. Discard the old electrode sleeve (4).

4. Replace the electrode (6), electrode sleeve (4), and O-ring (3) and re-install inside of the electrode housing (2).
5. Install the lance housing (5) over the assembled electrode and onto the end of the spray gun. Tighten the lance housing on the gun.

NOTE: It is important to install all components of the kit. The new electrode sleeve has a different internal profile than the original.

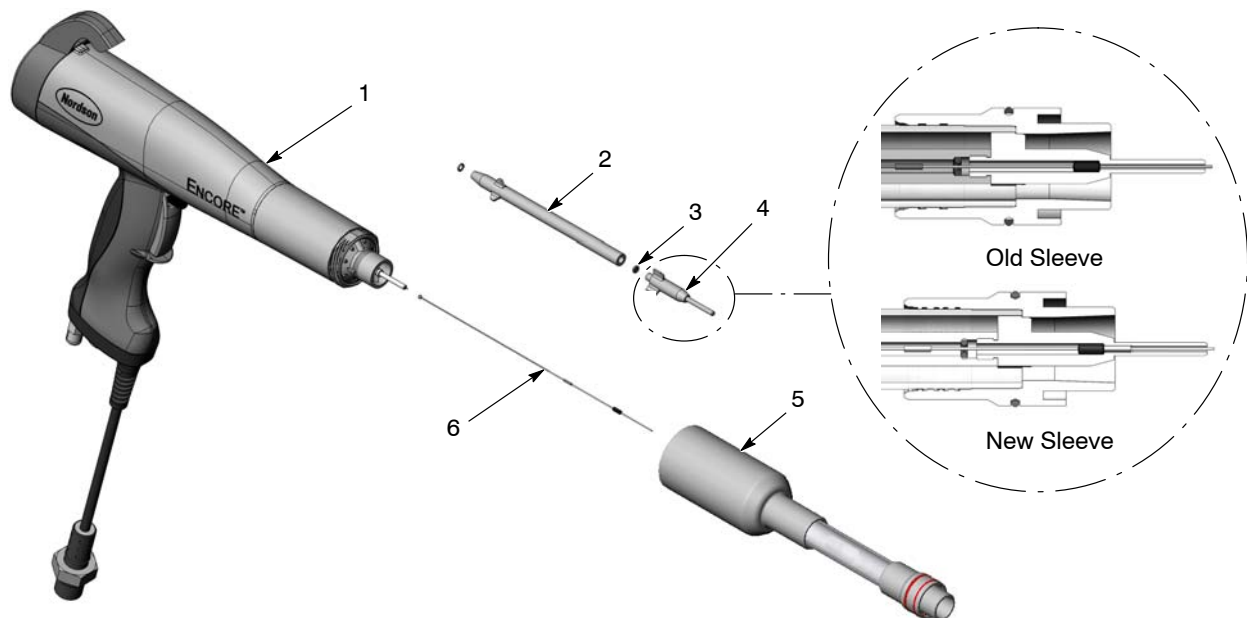


Figure 1 Electrode and Sleeve Kit Installation

- | | | |
|----------------------|---------------------|------------------|
| 1. Spray gun | 3. O-ring | 5. Lance housing |
| 2. Electrode housing | 4. Electrode sleeve | 6. Electrode |

Parts

Encore Lance Extension and Sleeve Kit

See Figure 2.



Figure 2 Encore Lance Extension Electrode and Sleeve Kit (150 mm Version Shown)

Part	Description	Note
1609892	KIT, electrode and sleeve, 150 mm lance, Encore, packaged	
1609893	KIT, electrode and sleeve, 300 mm lance, Encore, packaged	
1609900	KIT, electrode and sleeve, 450 mm lance, Encore, packaged	
1609901	KIT, electrode and sleeve, 600 mm lance, Encore, packaged	

Issued 10/2016

Original copyright date 2008. Encore, Nordson, and the Nordson logo are registered trademarks of Nordson Corporation.