

ColorMax[®] 2 Slide Gate Removal from Shipping Pallet

The ColorMax[®] 2 slide gate is shipped on a wooden pallet and requires light assembly before use. Use the instructions below to unpack the equipment.

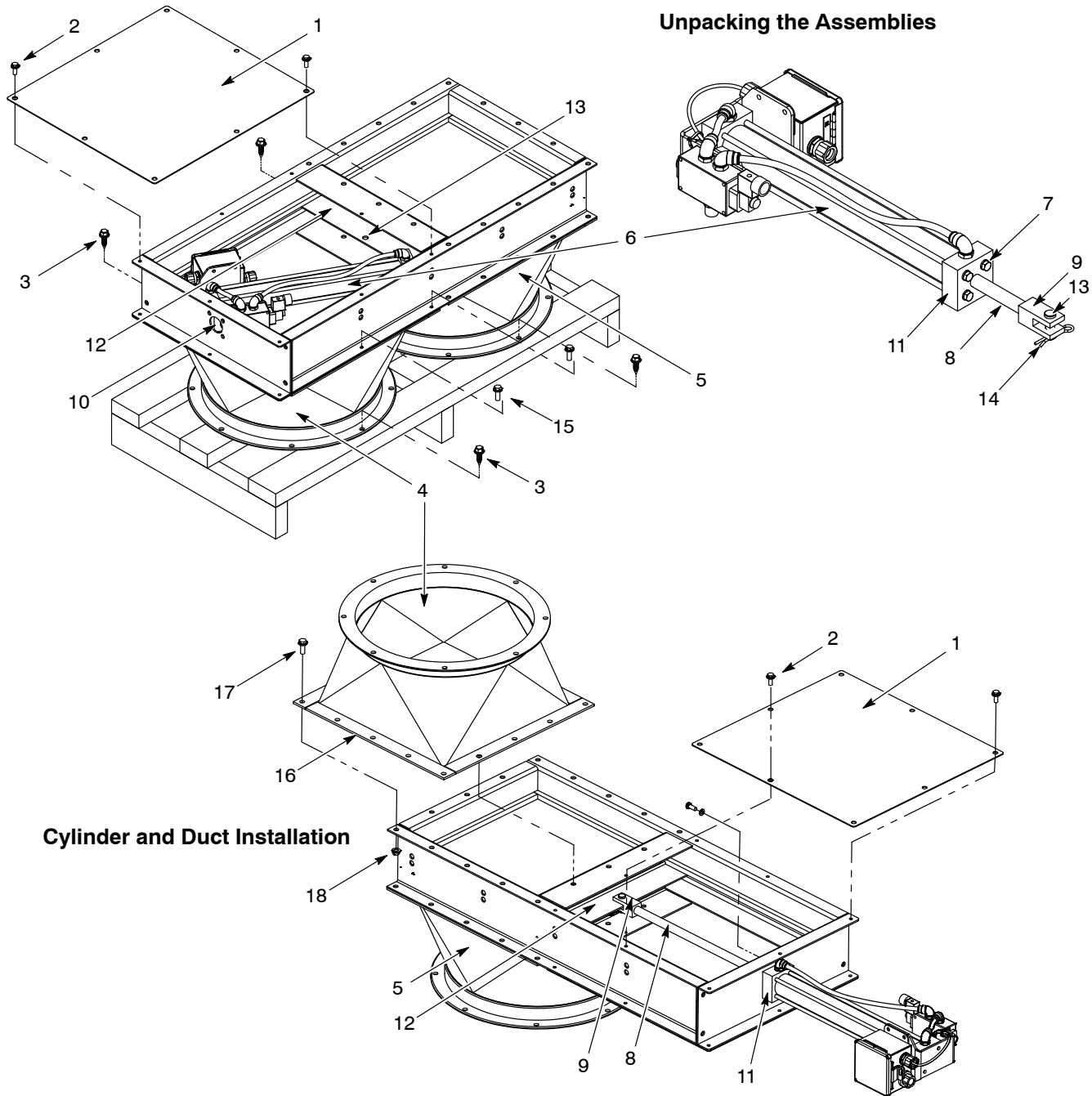
NOTE: Refer to manual 1605397 for parts and information on ColorMax 2 booth systems.

NOTE: The air cylinder assembly is pre-assembled electrically/mechanically with a solenoid valve, reed switch, and pneumatic tubing, and is packaged within the slide gate cover.

See Figure 1.

1. Remove the four shipping lag bolts (3) from the transition ducts (4,5) to remove the slide gate from the pallet.
2. Remove 5/16 in.-18UNC x 3/4 in. long thread cutting screws (2) from top cover (1). Remove the top cover from the slide gate.
3. Remove the air cylinder assembly (6) from the slide gate.
4. Remove the clevis (9) from the air cylinder rod (8) end. Remove the four mounting bolts (7) from the flange of the air cylinder.
5. Feed the air cylinder rod through the hole (10) at the end of gate frame. From the inside of the frame, install the four mounting bolts (7) with lock washers into the air cylinder flange (11).
6. Reinstall the clevis (9) onto the air cylinder rod end and tighten. Rotate the clevis so that it will straddle the slide gate plate (12). Align the clevis holes with the gate attachment hole (13) and install the clevis pin (14) with cotter pin.
7. Reinstall the top cover (1) using 5/16 in.-18UNC x 3/4 in. long thread cutting screws (2).
8. Remove the temporary bolts (15) used to hold the transition duct (4) from the bottom of the slide gate. Remove the transition duct (4) from the frame.
9. Apply ductwork sealant to the duct flange (16). Reattach the round to square transition duct (4) to top of slide gate at non-cover region using 3/8 in.-16UNC x 1 in. long serrated bolt (17) and nut (18).
10. Reinstall the bottom cover to frame using 5/16 in.-18UNC x 3/4 in. long thick cutting screws (2).
11. Remove the second transition duct (5) from the frame. Apply ductwork sealant to the duct flange.
12. Reattach the transition duct (5) to the same location at the bottom of slide gate using 3/8 in.-16UNC x 1 in. long serrated bolt (17) and nut (18).
13. Complete the installation of the slide gate into the booth ductwork system.

Unpacking the Assemblies



Cylinder and Duct Installation

Figure 1 ColorMax 2 Slide Gate

- | | | |
|------------------------------------|-------------------------|--------------------------------|
| 1. Top cover | 7. Mounting bolts | 13. Gate attachment hole |
| 2. 5/16 in.-18UNC x 3/4 in. screws | 8. Air cylinder rod | 14. Clevis pin |
| 3. Shipping lag bolts | 9. Clevis | 15. Temporary duct bolts |
| 4. Transition duct (first) | 10. Gate frame hole | 16. Duct flange |
| 5. Transition duct (second) | 11. Air cylinder flange | 17. 3/8 in.-16UNC x 1 in. bolt |
| 6. Air cylinder assembly | 12. Slide gate plate | 18. Nut |

Issued 01/15

Original copyright date 2015. ColorMax, Nordson, and the Nordson logo are registered trademarks of Nordson Corporation. All other trademarks are the property of their respective owners.