

# Encore® HD Manual Powder Spray Gun Lance Extensions

## Description

Encore® HD manual powder spray gun lance extensions extend the length of the powder path to help spray powder into recesses and interior corners. Lance extensions are available in 150 mm and 300 mm lengths.

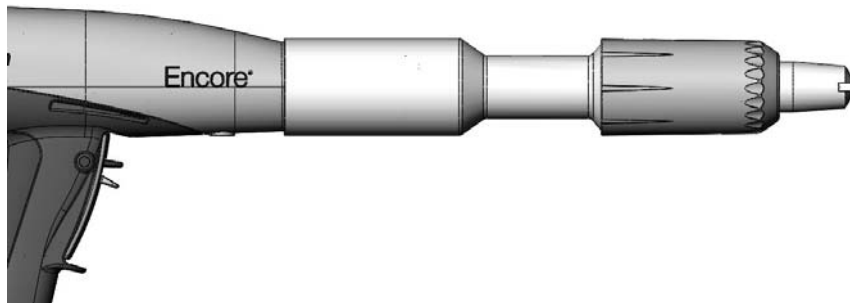


Figure 1 Encore HD Spray Gun with 150 mm Lance Extension Installed

## Installation



**WARNING:** Allow only qualified personnel to perform the following tasks. Follow the safety instructions in this document and all other related documentation.



**WARNING:** Turn off the spray gun control unit and ground the gun electrode before performing the following tasks. Failure to observe this warning could result in a severe shock.

1. Replace the powder outlet tube using the powder outlet tube kit that is shipped with the lance extension. See the *Options* section of this document for part number and description. Refer to instruction sheet 1606083 for installation instructions.
2. See Figure 2. Remove the nozzle nut (1), nozzle (2), and electrode support assembly (3) from the spray gun (5).
3. Install the lance extension (4) onto the spray gun.
4. Install the electrode support assembly, nozzle and nozzle nut onto the lance extension.

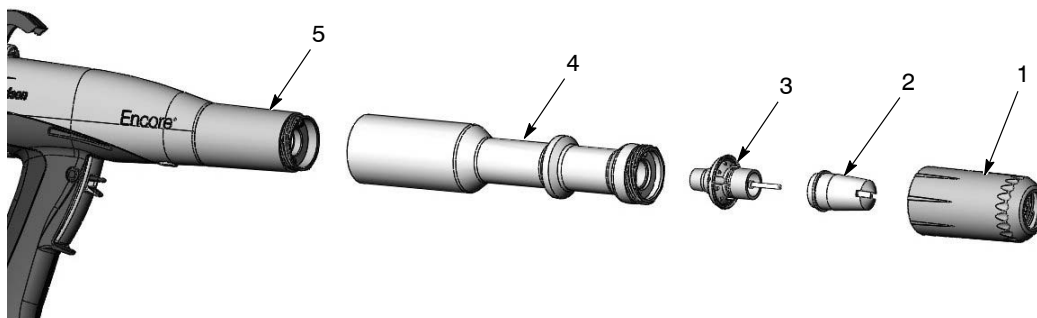


Figure 2 Lance Extension Installation

## Color Change

1. See Figure 3. Remove the lance extension from the spray gun.
2. Clean the spray gun and the lance extension using compressed air.
3. Reinstall the lance extension onto the spray gun.

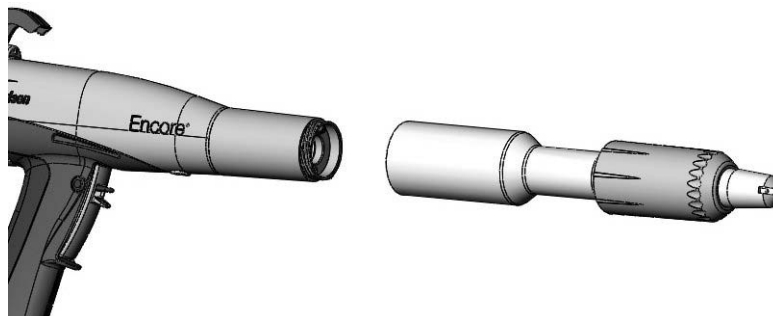


Figure 3 Color Change Procedure

## Parts

See Figure 4. To order parts, call the Nordson Finishing Customer Support Center at (800) 433-9319 or contact your local Nordson representative.

**NOTE:** This style of lance extension is not available in a 600 mm length.

Item	Part	Part	Description	Quantity	Note
—	1604965		LANCE EXTENSION ASSY, Encore HD, 150 mm	1	
—		1604970	LANCE EXTENSION ASSY, Encore HD, 300 mm	1	
1	1604972		• KIT, body assy, lance extension, Encore, 150 mm	1	
1		1604973	• KIT, body assy, lance extension, Encore, 300 mm	1	
2	1097527	1097527	• SEAL, tube, powder	1	
3	1604961		• TUBE, powder, lance extension, 150 mm, Encore	1	
3		1604968	• TUBE, powder, lance extension, 300 mm, Encore	1	

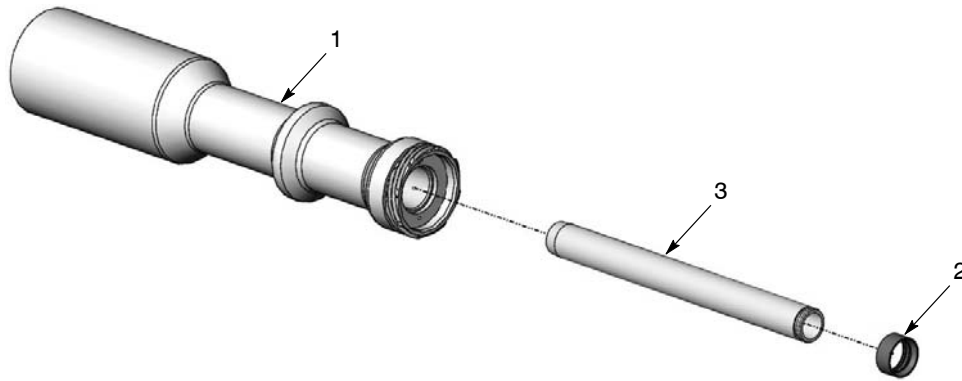


Figure 4 Lance Extension Assembly Parts

**Options**

Install the Encore HD powder outlet tube kit before installing lance extensions.

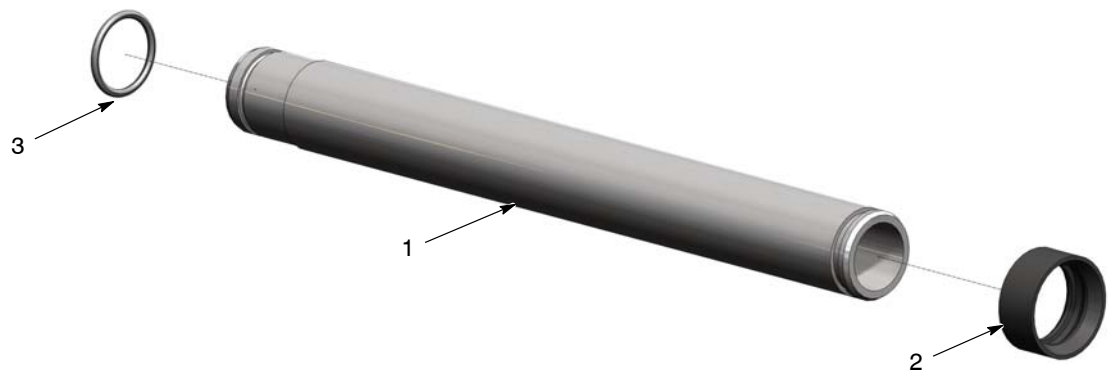


Figure 5      Encore HD Powder Outlet Tube Kit

Item	Part	Description	Quantity
—	1606082	KIT, powder outlet tube assembly, Encore HD	1
1	-----	• TUBE, powder outlet, Encore HD	1
2	1097527	• SEAL, tube, powder	1
3	1081785	• O-RING, silicone, 0.468 X 0.568 X 0.050	1