

# Encore<sup>®</sup> HD Powder Outlet Tube Kit

## Description

The Encore<sup>®</sup> HD powder outlet tube kit is used to replace the powder outlet tube on the Encore HD powder spray gun.

Each kit contains a powder outlet tube, seal, and O-ring.



Figure 1 Encore HD Powder Outlet Tube Kit

## Installation



**WARNING:** Allow only qualified personnel to perform the following tasks. Follow the safety instructions in this document and all other related documentation.

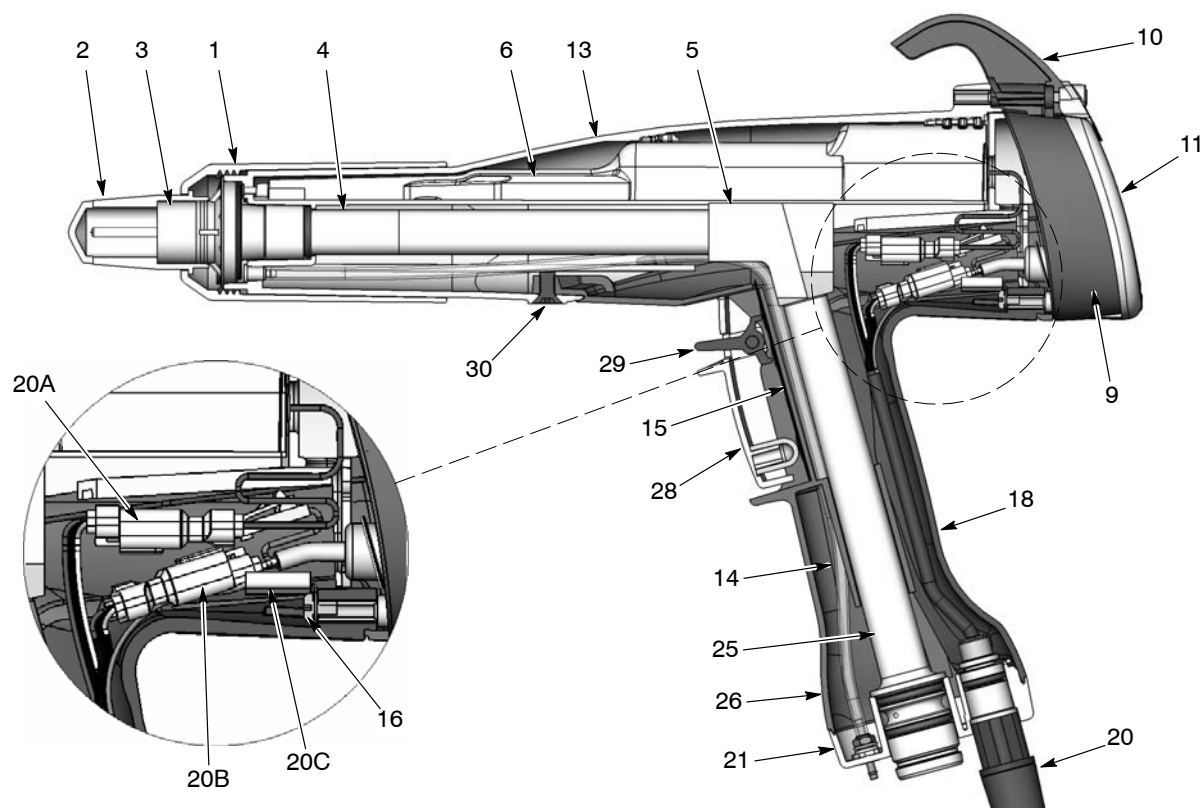


Figure 2 Section View of Spray Gun (item numbers in this section match item numbers in spray gun manual parts list)

- |                                   |                                  |                                |
|-----------------------------------|----------------------------------|--------------------------------|
| 1. Nozzle nut                     | 11. Bezel                        | 20B. Display connector (J3)    |
| 2. Nozzle, flat spray             | 13. Gun body                     | 20C. Ground terminal (J1)      |
| 3. Electrode assembly, flat spray | 14. Air wash tubing              | 21. Handle base                |
| 4. Outlet tube                    | 15. Trigger switch               | 25. Inlet tube                 |
| 5. Elbow                          | 16. Ground screw                 | 26. Handle                     |
| 6. Power supply                   | 18. Ground pad                   | 28. Spray trigger              |
| 9. Display module                 | 20. Cable assembly               | 29. Settings/purge trigger     |
| 10. Hook                          | 20A. Power supply connector (J2) | 30. Screw (handle to gun body) |

*Note:* Ground terminal (20C) must always be connected to the ground screw (16).

## Display Module Removal

**NOTE:** Blow off any residual powder on the gun and in the powder path before proceeding.

1. See Figures 2 and 3. Unscrew the top and bottom screws (12) holding the bezel (11), hook (10) and display module (9) onto the gun body.
2. Carefully pull the display module away from the gun.

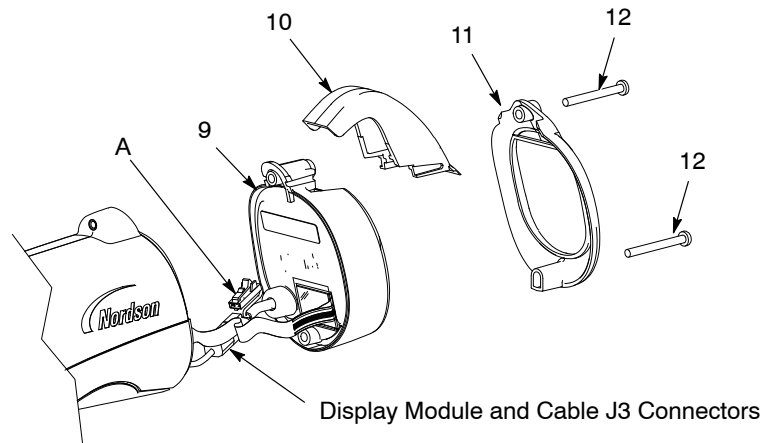


Figure 3 Display Module Removal

- |                   |                    |                          |
|-------------------|--------------------|--------------------------|
| 9. Display module | 11. Bezel          | A. Ground wire connector |
| 10. Hook          | 12. M3 x 35 screws |                          |

## Gun Disassembly

1. See Figure 2. Unscrew the nozzle nut (1) and remove the nozzle (2) and electrode assembly (3) from the spray gun.
2. See Figure 4. Remove the black nylon screw (30) from the gun body.
3. Grasp the handle in one hand and the gun body in the other. Press the thumbs of each hand together while pulling carefully in opposite directions to separate the gun body from the handle. The air wash tubing will prevent a complete separation; leave it connected unless it must be replaced.

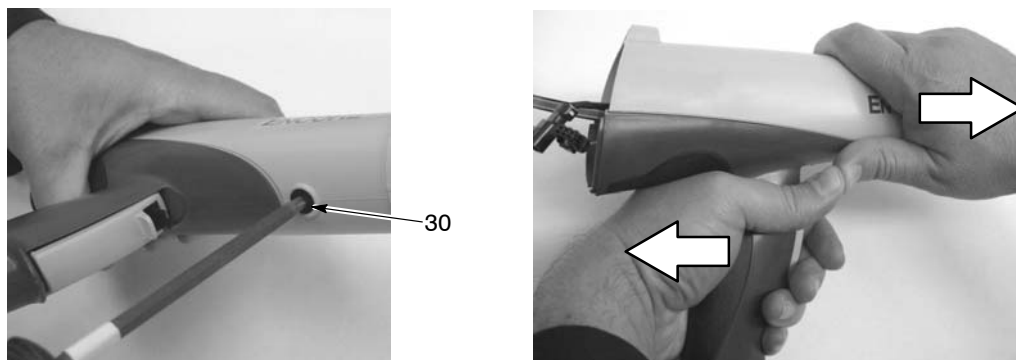


Figure 4 Removing the Gun Body from the Handle

## Powder Tube Replacement

1. See Figure 5. Push the outlet tube (4), along with the O-rings, out of the front of the gun body (13).

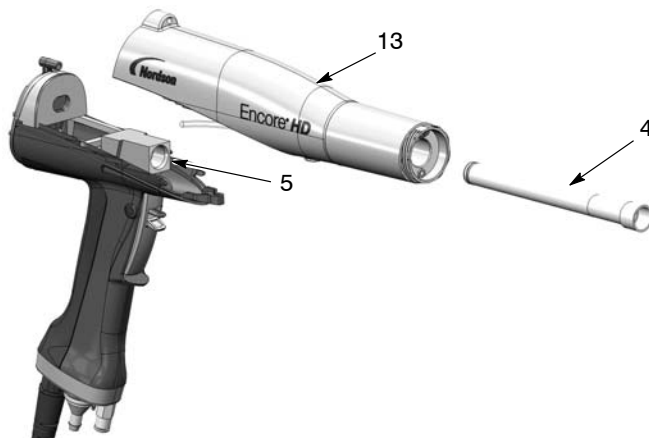


Figure 5 Powder Tube Replacement (Display module and air tubing not shown)

4. Outlet tube

5. Elbow

13. Gun body

2. Install the new outlet tube assembly into the gun body, with the end of the tube flush with the end of the gun body.

## Gun Re-Assembly

1. See Figure 6. Align the gun body with the handle and slide them together, engaging the internal ribs of the gun body with the handle tabs.

**NOTE:** Make sure that the power supply harness is not pinched between the bulkhead and the power supply.

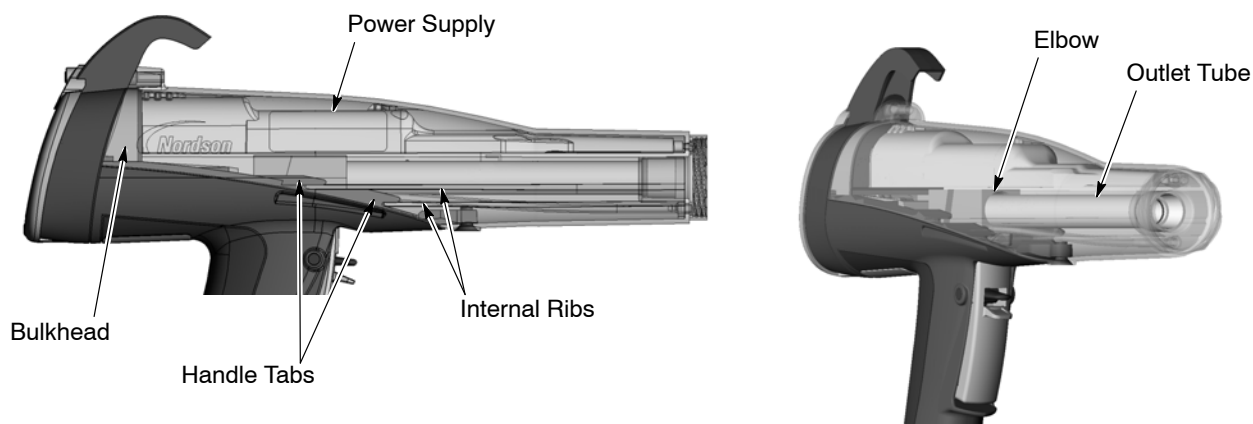


Figure 6 Gun Re-Assembly

2. Insert your finger into the outlet tube at the front of the gun and align the inside end of the tube with the elbow, then push on the tube to seat it in the elbow.

**NOTE:** Shine a flashlight up through the handle base to illuminate the powder pathway. This will allow a better view when aligning the end of the tube with the elbow.

3. See Figure 3. Install the display module.
  - a. Gently fold the trigger switch ribbon cable and display module cable into the gun, and install the display module onto the gun.
  - b. Slide the hook (10) onto the display module, then install the bezel (11).
  - c. Install and tighten the screws (12).
4. Install the electrode assembly (3) into the the end of the outlet tube at the front of the gun body. Make sure the wire electrode is not bent or broken.
5. Install the nozzle (2) on the electrode assembly, making sure the keys in the electrode assembly slide into the slots on the nozzle.
6. Install the nozzle nut (1) over the nozzle and rotate clockwise to secure.

## Parts

For parts and technical support, call the Industrial Coating Systems Customer Support Center at (800) 433-9319 or contact your local Nordson representative.

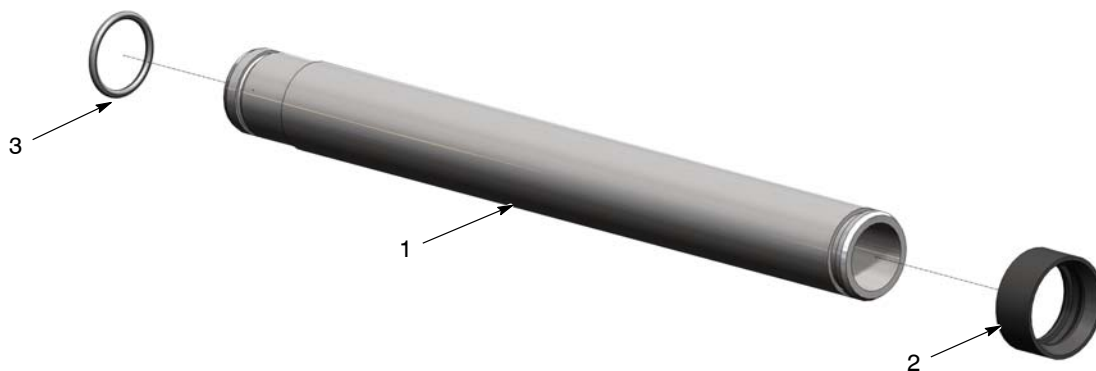


Figure 7 Encore HD Powder Outlet Tube

Item	Part	Description	Quantity
—	1606082	KIT, powder outlet tube assembly, Encore HD	1
1	-----	• TUBE, powder outlet, Encore HD	1
2	1097527	• SEAL, tube, powder	1
3	1081785	• O-RING, silicone, 0.468 X 0.568 X 0.050	1

Issued 07/14

Original copyright date 2014. Encore, Nordson and the Nordson logo are registered trademarks of Nordson Corporation.