

Flow Control Manifold Filter Service Kit



WARNING: Allow only qualified personnel to perform the following tasks. Follow the safety instructions in this document and all other related documentation.

Introduction

The Flow Control Manifold Filter Service Kit includes a Filter Replacement Tool and 12 filter discs.

Part	Description	Note
1604436	Service kit, filter, 20 micron, with tool	
1604437	Kit, filter, 20 micron	Pkg/12

This service kit provides easy replacement for filter discs in the following flow control manifolds.

Part Number	Airflow Control Unit
1027259	Module, digital airflow control
1052898	Manifold assy, HDLV pump control
1082712	Module, digital airflow control, Encore
1101342	Manifold assy, HDLV pump control, Gen III
1613443	Module, digital airflow control, auto, Enhance
1614524	Module, digital airflow control, manual, Enhance

NOTE: Part numbers listed above refer to component parts and are non-saleable as individual items. These part numbers can be found on the manifold label. Refer to your equipment manual for applicable replacement parts.

Accessing Filters

To replace the filters refer to page 3.

Systems with Venturi Pumps

See Figure 1. Remove the screws and washers securing the circuit board to the manifold, then remove the circuit board from the manifold. If the XDOR seals remain in the manifold port, remove them.

Systems with HDLV Pumps

See Figure 2. Remove the fittings as shown.

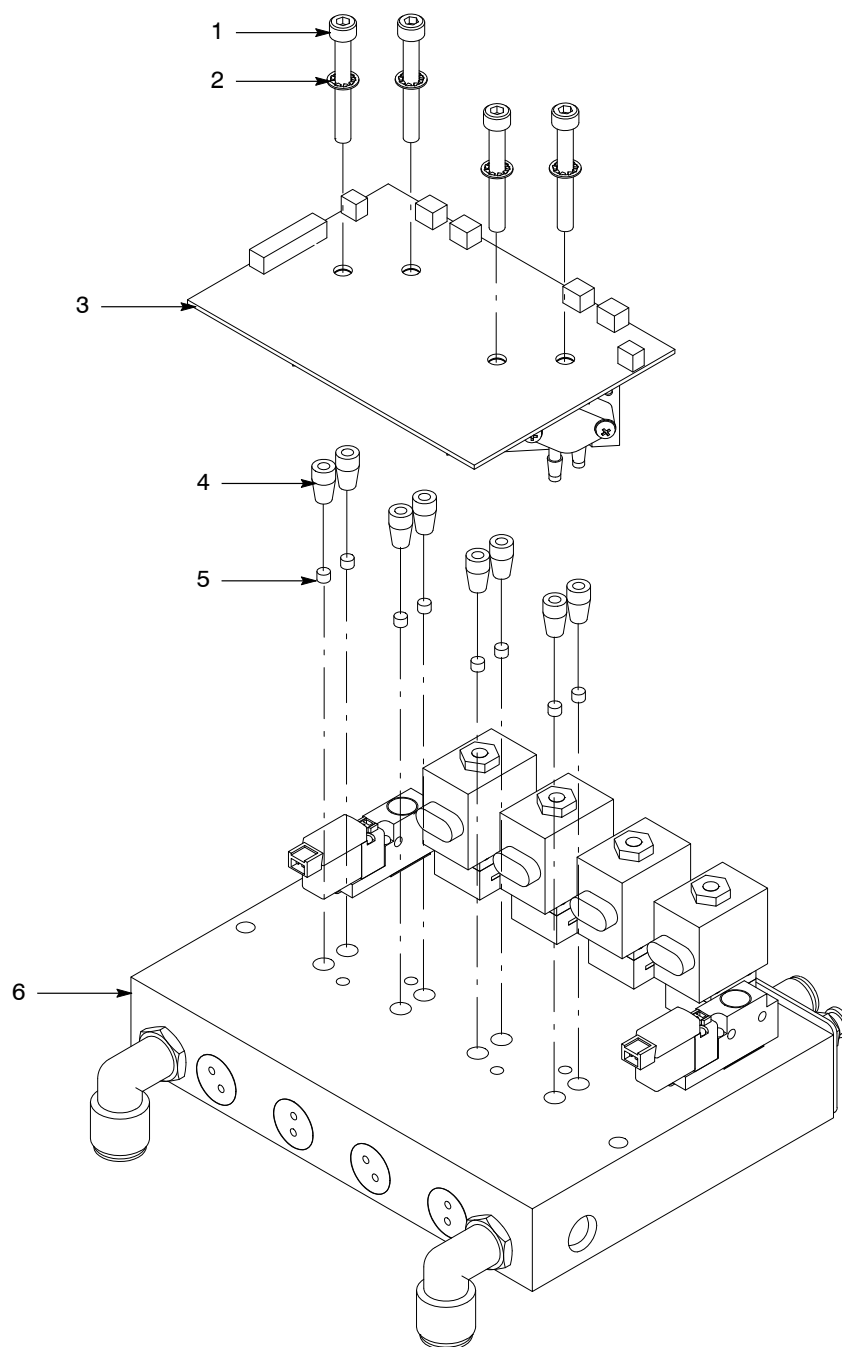


Figure 1 Air Control Manifold for Venturi Pumps.

- | | | |
|------------|------------------|----------------------|
| 1. Screws | 3. Circuit board | 5. Filters |
| 2. Washers | 4. XDCR seals | 6. Manifold assembly |

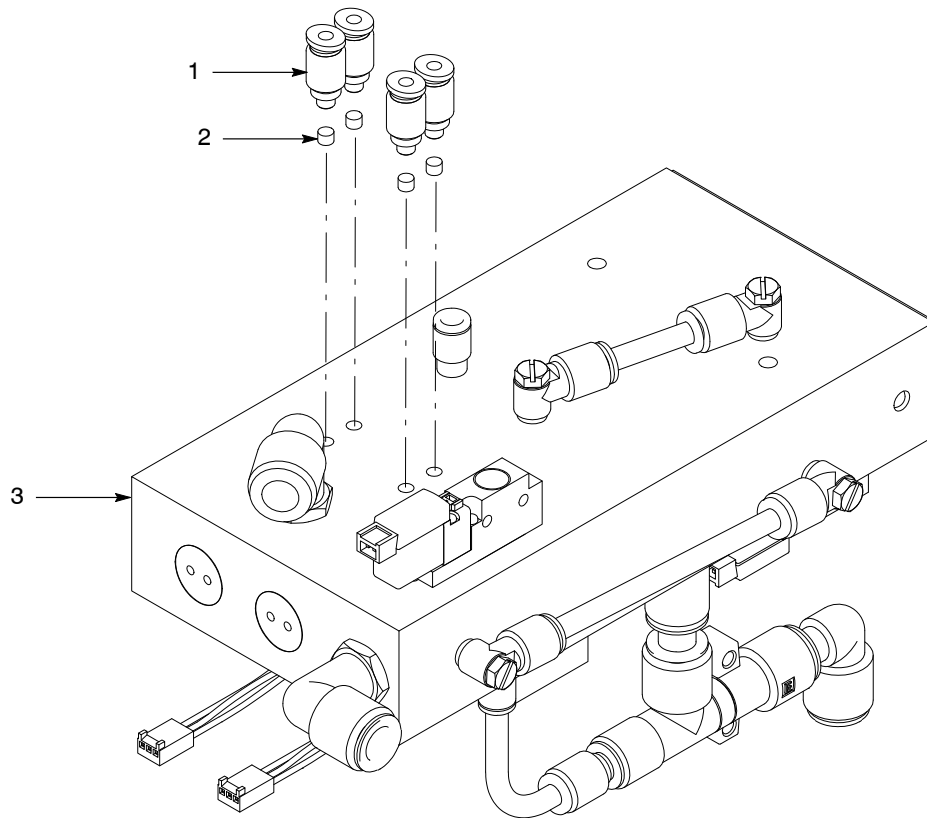


Figure 2 iFlow Manifold for HDLV Pumps.

1. Fittings

2. Filters

3. Manifold assembly

Replacing Filters

1. See Figure 3. Remove the cap from the filter replacement tool.
2. Screw the tool into the filter.
3. Remove the filter from the port.
4. See Figure 4. Install the cover on the replacement tool.
5. Insert the filter into the filter port.
6. Use the tool to gently press the filter into the filter port until it bottoms out. Take care not to crush the filter.
7. Reinstall the fittings or the circuit board in the same way that you removed them.

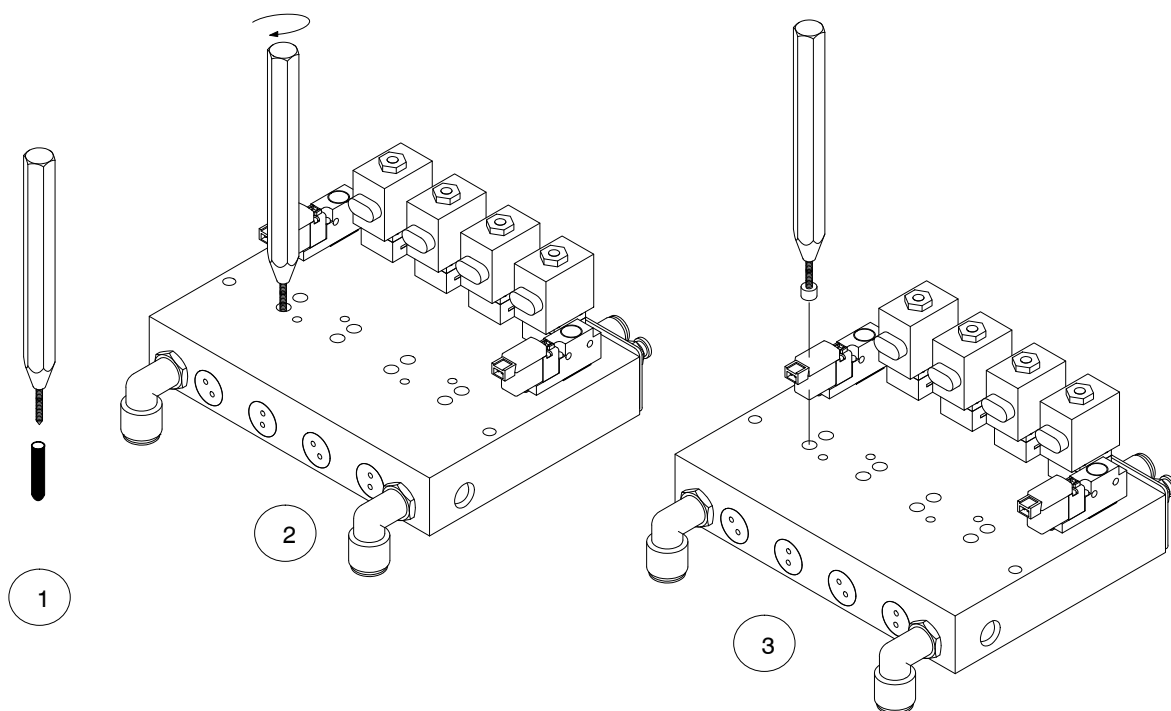


Figure 3 Filter replacement steps 1 through 3.

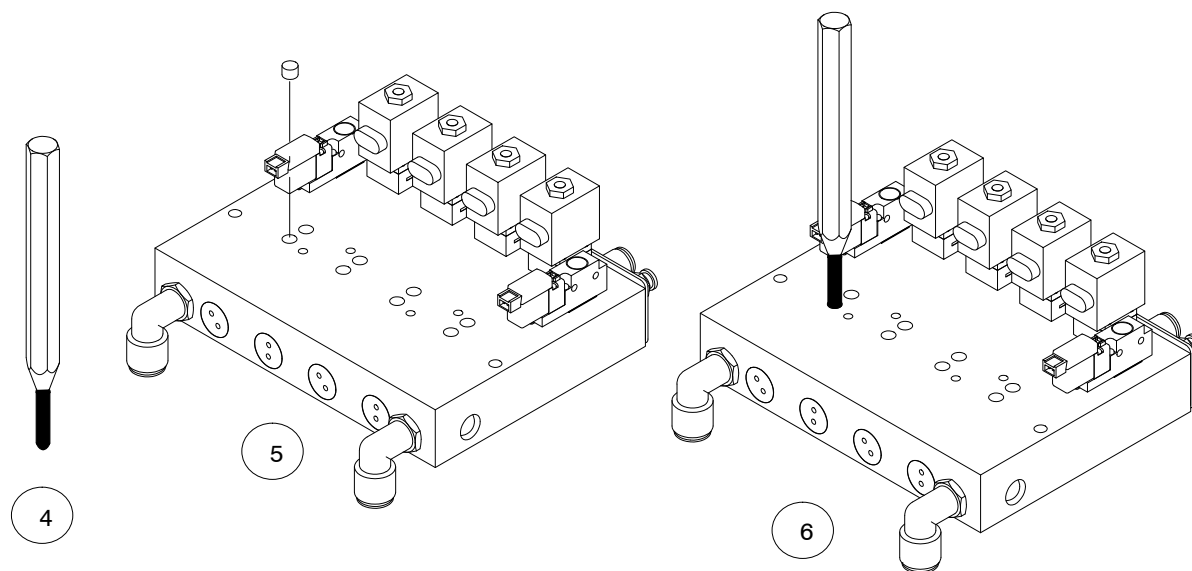


Figure 4 Filter replacement steps 4 through 6.

Issued 05/2019

Original copyright date 2013. HDLV, Nordson and the Nordson logo are registered trademarks of Nordson Corporation.