

External Gun Blow Off Kit

Description

The external gun blow off system is mounted along the exterior sides of the booth to clean powder from the external surface of the Encore® or Prodigy® automatic powder spray guns as they move in and out of the booth by the gun movers during a color change sequence.

The manifold assembly kit includes two manifolds with fittings, nozzles, tubing, and mounting parts.

The mounting parts are configurable to adjust to various setups.

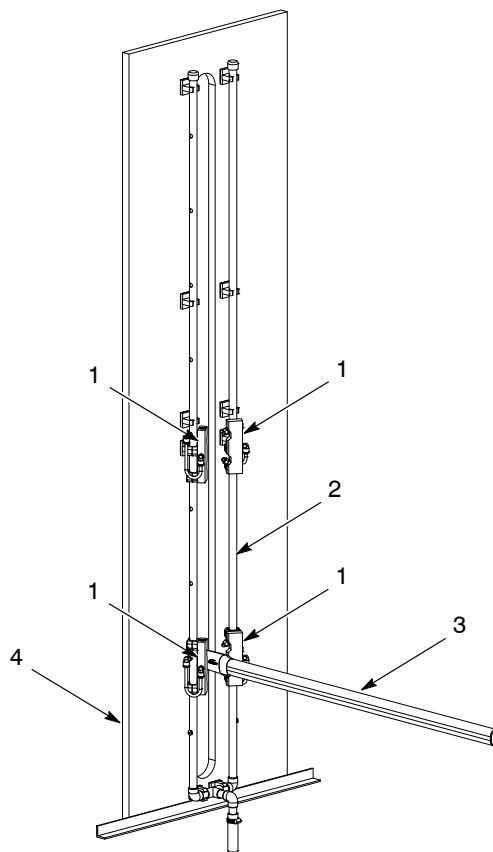


Figure 1 External Gun Blow Off Kit Installed on Header Pipe Assembly

- 1. Manifold assembly kit
- 2. Header pipe assembly

- 3. Automatic gun

- 4. Side of booth canopy

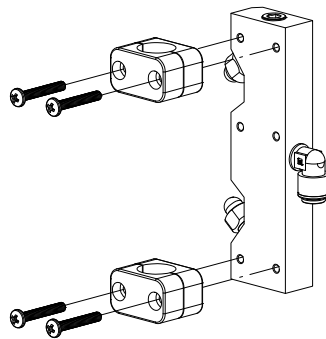
Installation

Before mounting the manifold assembly kit, the header pipe assembly and automatic spray guns must be installed. If the automatic spray guns are mounted to an oscillator or reciprocator, the guns should be located in the cleaning home position for proper alignment of the manifold assembly kit to be achieved.

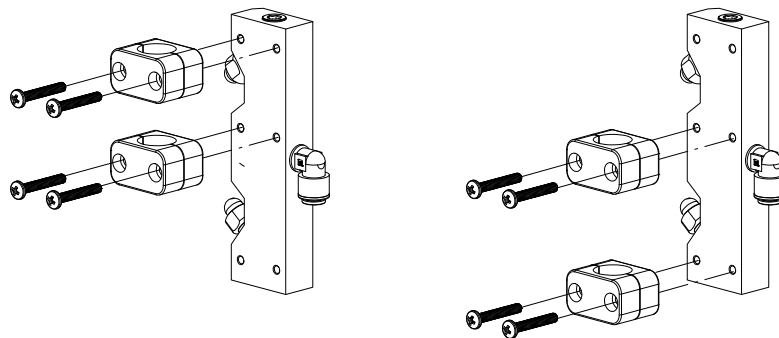
Mounting Positions

NOTE: The manifold must be secured to the header pipe assembly in two places for proper mounting.

See Figure 2. The manifold allows for several mounting alternatives. Using the clamps with the outer most hole patterns is recommended. However, if one of the mounting hole patterns is obstructed by another fitting or mounting bracket, use one of the other alternative mounting positions shown in Figure 2.



Recommended Mounting Position



Alternative Mounting Positions

Figure 2 Mounting Positions

Mounting Gun Blow Off Kit to Header Pipe Assembly

1. See Figure 3. Install the fittings (1) into the header pipe assembly (2) near the gun position on both sides of the gun slot. Any unused holes in the header pipe assembly should be plugged (3).

*Header pipe assembly plugs are not included with the gun blow off kit.

Header pipe assembly plugs are supplied with the header pipe assembly.

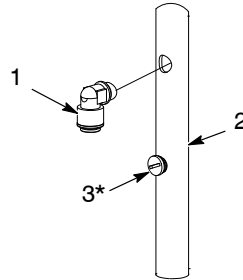


Figure 3 Header Pipe with Fitting and Plug

- | | | |
|------------|----------------|----------|
| 1. Fitting | 2. Header pipe | 3. Plug* |
|------------|----------------|----------|

2. See Figure 4. Use the clamps (5) and the M6 screws (4) to secure the manifold (6) to the header pipe assembly (2). Leave the screws slightly loose for alignment procedure in the following section.
3. Install the tubing (7) from the fitting (1) on the manifold to the fitting (1) on the header pipe assembly. Repeat procedure for the second manifold.

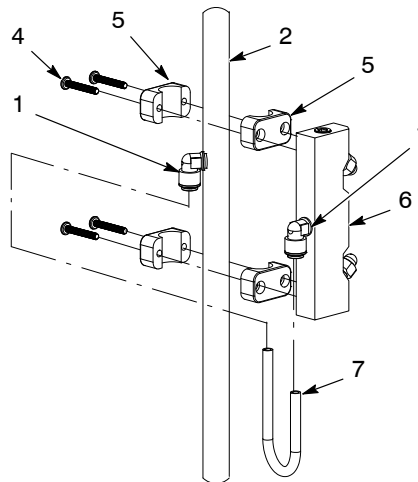


Figure 4 Gun Blow Off Kit Installation

- | | | |
|----------------|-------------|-------------|
| 1. Fittings | 4. M6 screw | 6. Manifold |
| 2. Header pipe | 5. Clamp | 7. Tubing |

Gun Blow Off Kit Alignment

Use the following instructions to properly align the gun blow off kit to the Encore automatic guns.

1. Vertically move the manifold to align the manifold edge under the upper nozzle with the top of the gun's oval mount tube as shown in Figure 5. Repeat for second manifold.

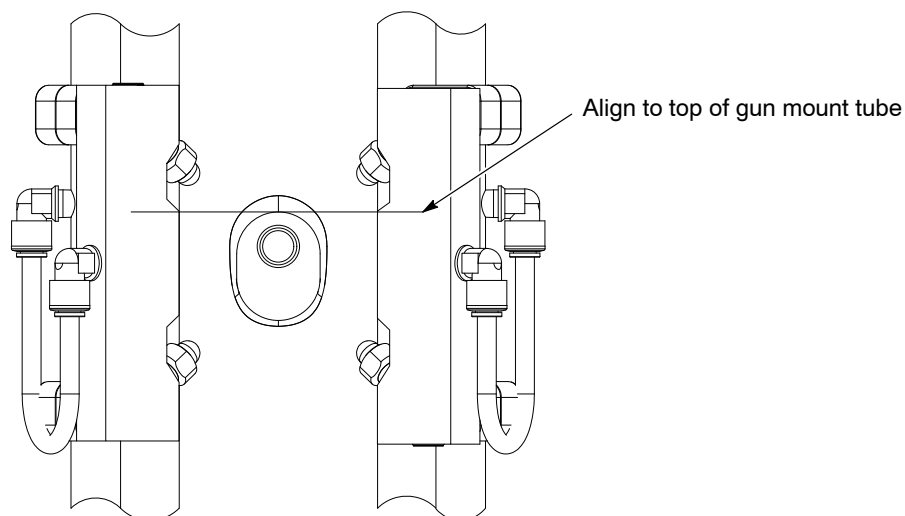


Figure 5 Align to Top of Gun Mount Tube

2. Rotate the manifold so that the manifold's chamfered edge is parallel with the inner edge of the canopy gun slot shown in Figure 6. Tighten the M6 clamps screws to secure the manifold in place.

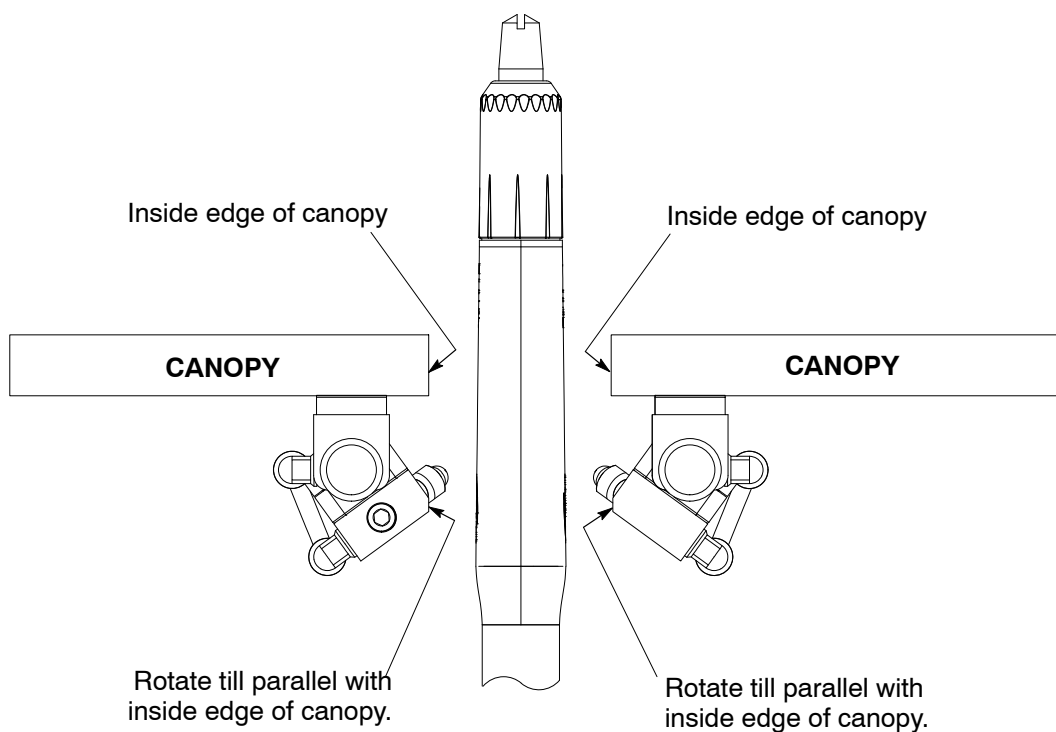


Figure 6 Align Manifold to Canopy Gun Slot Edge

Parts

Item	Part	Description	Quantity	Note
—	1602619	MANIFOLD ASSEMBLY, nozzle, blow off	1	
1	1602615	• SCREW, pan head, Phillips, M6 x 40 nylon, black	8	
2	1602612	• FITTING, tube, $\frac{3}{8}$ in. T x $\frac{1}{4}$ in. NPT	4	
3	1606403	• TUBE, polyurethane, $\frac{3}{8}$ in. OD, black	2	
4	-----	• CLAMP, $\frac{1}{2}$ in.	4	
5	-----	• PLUG, pipe, $\frac{3}{8}$ in. NPT, nylon	2	
6	1602610	• NOZZLE, blow off gun	4	
7	-----	• MANIFOLD, gun blow off	2	

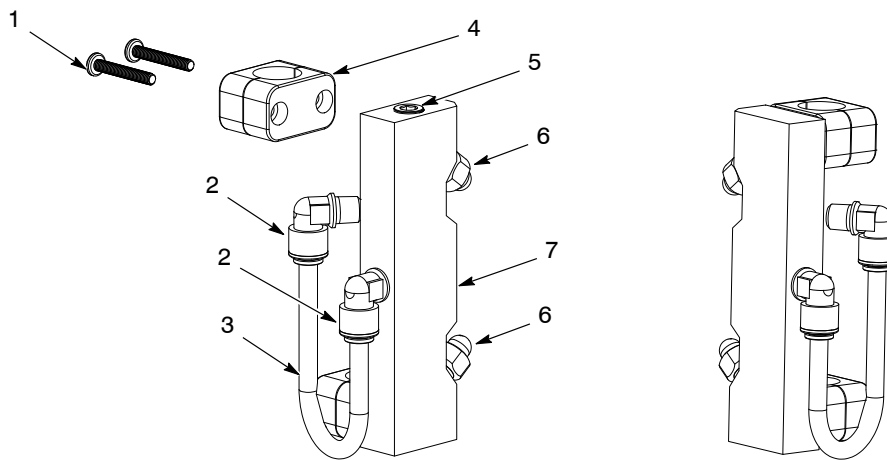


Figure 7 Gun Blow Off Manifold Assembly Kit Parts

Issued 04/15

Original copyright date 2013. Nordson, the Nordson logo, Encore, and Prodigy are registered trademarks of Nordson Corporation.