



WARNING: Allow only qualified personnel to perform the following tasks. Follow the safety instructions in this document and all other related documentation.

Description

See Figure 1. The 1700 BTU/Hour Cabinet Cooler supplies chilled air to the inside of a controller cabinet.

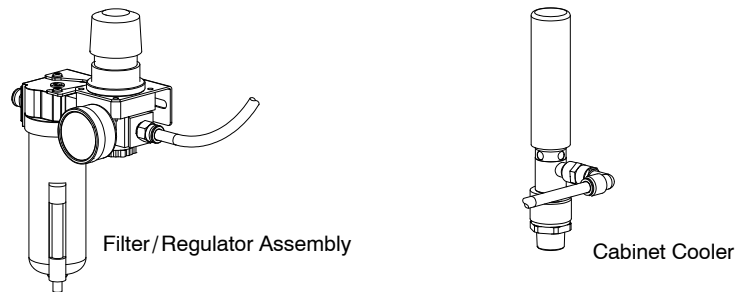


Figure 1 Cabinet Cooler Kit

Assemble the Kit

1. See Figure 2. Apply PTFE tape to the threads as shown. Install the fittings (3, 4, 5, 11) to the cooler (1), filter (9), and regulator (13). Tighten the fittings securely.
2. Apply the Hot Surface tag (2) onto the cooler (1) as shown.
3. Connect the filter (9) and regulator (13) to the coupling (8) following the manufacturer's instructions. Tighten the coupling bracket screws securely.
4. Install the bracket (14), lock ring (15), gage (10), and plug (12) onto the regulator (13). Tighten the lock-ring, gage, and plug securely.
5. Install the filter mounting bracket (7) onto the filter (9) using the screws (6). Tighten the screws securely.

▲ Apply PTFE tape to threads

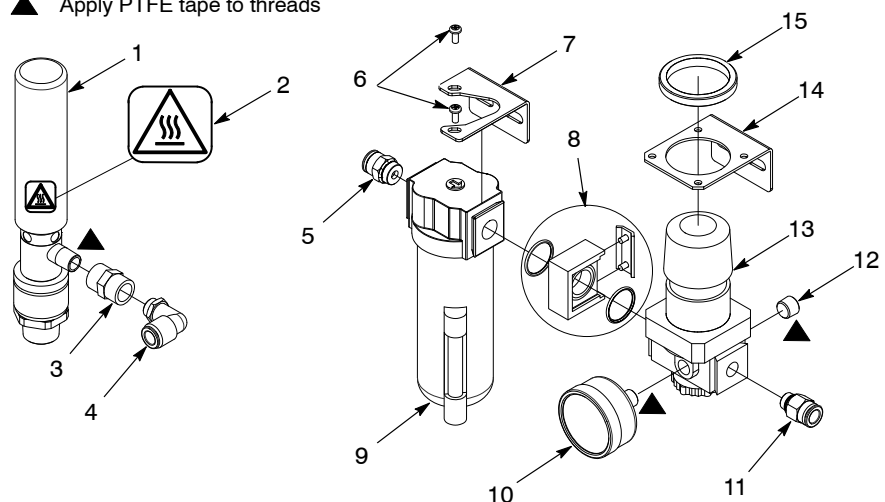


Figure 2 Assembling the Kit

Encore Controller Cabinet Installation

1. See Figure 3. Remove the screws (7) and washers (8) securing the bezel (6) to the cabinet (19).
2. Remove the screws (9) securing the keypad (5) to the cabinet (19).
3. Remove the wing nut (16) securing the spacer (17) and plug (18) to the top of the cabinet (19).
4. Remove the screws (11) securing the panel blank (10) to the cabinet (19).
5. Make sure that the o-ring (not shown) is in the groove on the bottom of the cooler (2). Install the cooler onto the cabinet (19) using the nut (4). Tighten the nut securely.
6. Route the tube (12) from the cool air distribution kit through the cabinet as shown in Figures 3 and 4. Make sure that the end of the tube is routed away from the electronics package located in the bottom of the cabinet (19).

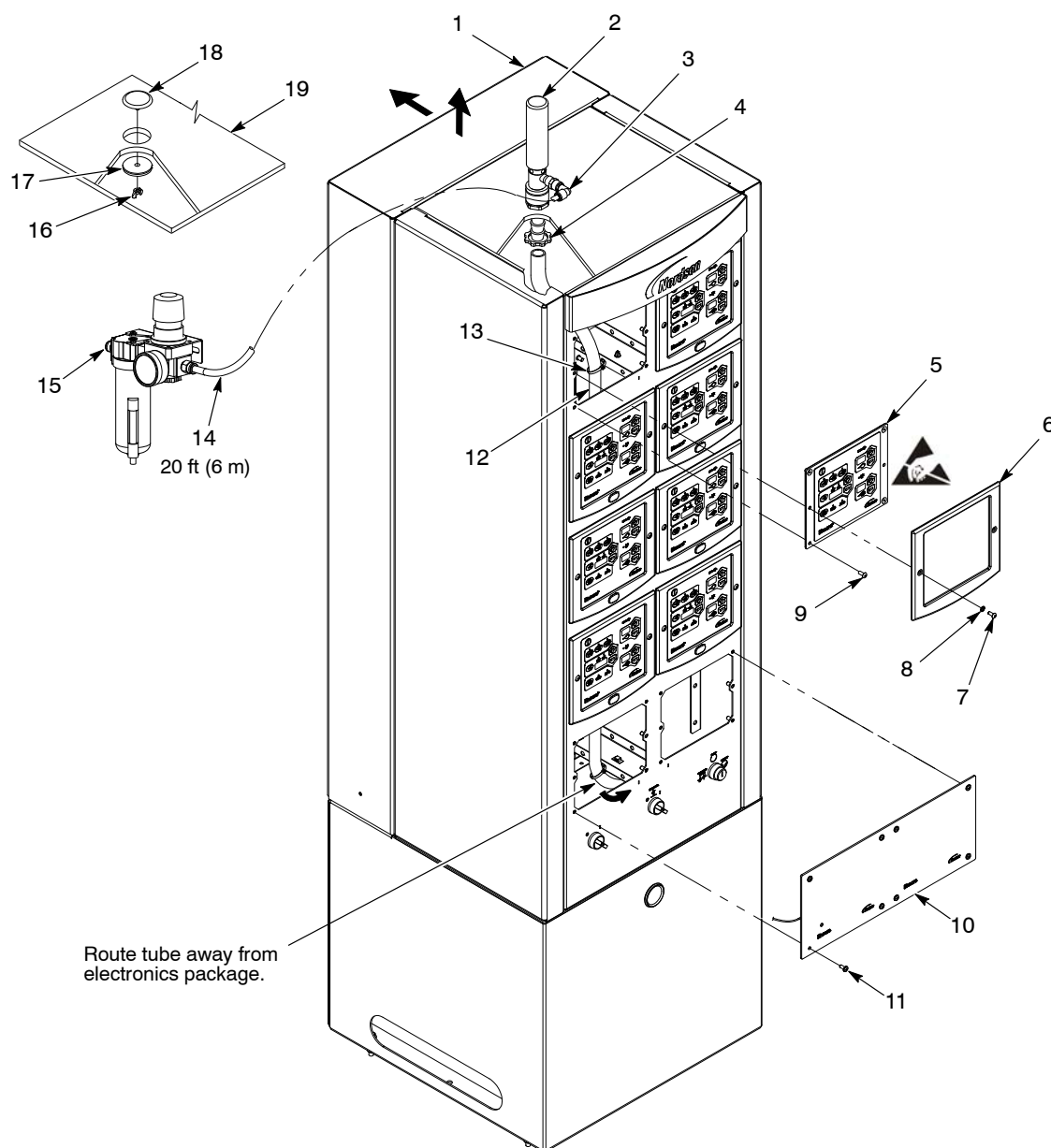


Figure 3 Typical Encore Controller Cabinet Installation

7. Connect the tube (12) to the fitting on the cooler (2) following the manufacturer's instructions.

NOTE: To prevent kinking the tube, do not over tighten the cable straps.

8. Use the cable straps (13) to secure the tube (12) to the inside of the cabinet (19) along the middle support rail as shown in Figure 3.
9. Mount the filter/regulator assembly (15) in the desired location.
10. Connect the tubing (14) to the regulator (15) and the cooler fitting (3).
11. Install the panel blank (10) using the screws (11). Tighten the screws securely.
12. Install the keypad (5) to the cabinet using the screws (9). Tighten the screws securely.
13. Install the bezel (6) to the cabinet (19) using the washers (8) and screws (7). Tighten the screws securely.

Procedure continues on next page...

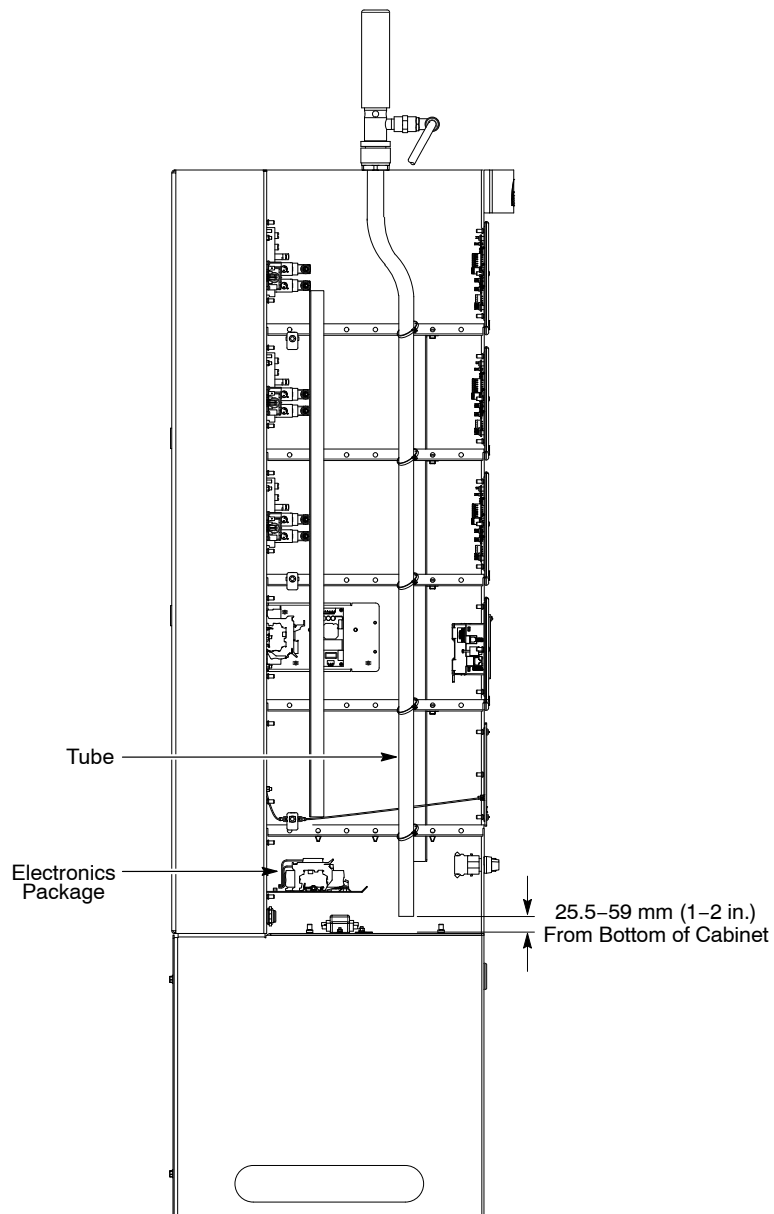


Figure 4 Tube Routing

14. Apply the Approval labels:

- Remove the back panel (1) by sliding it up and away from the cabinet (19).
- Apply the Approval labels as shown in Figure 5.
- Install the back panel (1) onto the cabinet (19).

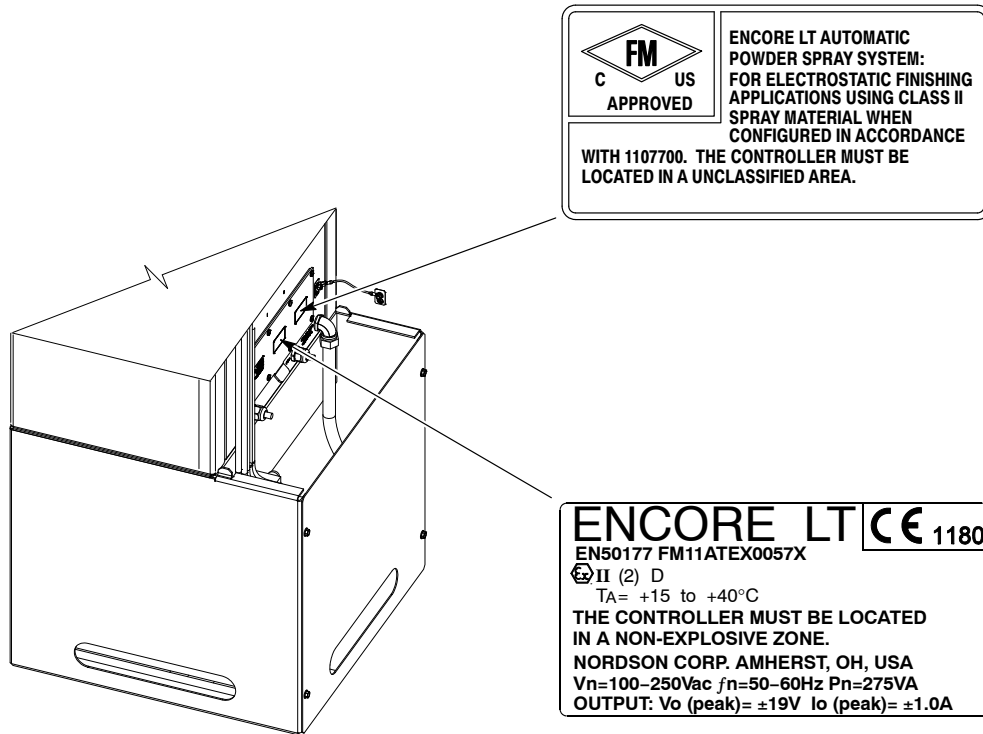


Figure 5 Approval Labels

Operation Guidelines

The cabinet cooler is designed to provide a 28 °C (50 °F) temperature drop from supply air temperature at 6.9 bar (100 psig).

During lab tests, the cooler was used with an 8-Gun Encore Controller operating at:

- Ambient Temperature: 60 °C (140 °F)
- Supply Air Temperature: 22 °C (72 °F)

The following performance was measured:

Cooler Supply Air Pressure bar (psi)	Internal Cabinet Temperature Drop °C (°F)
2.76 (40)	11 (20)
5.52 (80)	22 (40)

NOTE: Cooler performance will vary from the results shown due to the supply air temperature. Higher supply air temperatures decrease the cooling capability of the cabinet cooler. Take temperature readings of the supply air to verify that the desired internal cabinet temperature is obtained for the specific installation.

Parts

To order parts, call the Nordson Finishing Customer Support Center at (800) 433-9319 or contact your local Nordson representative.

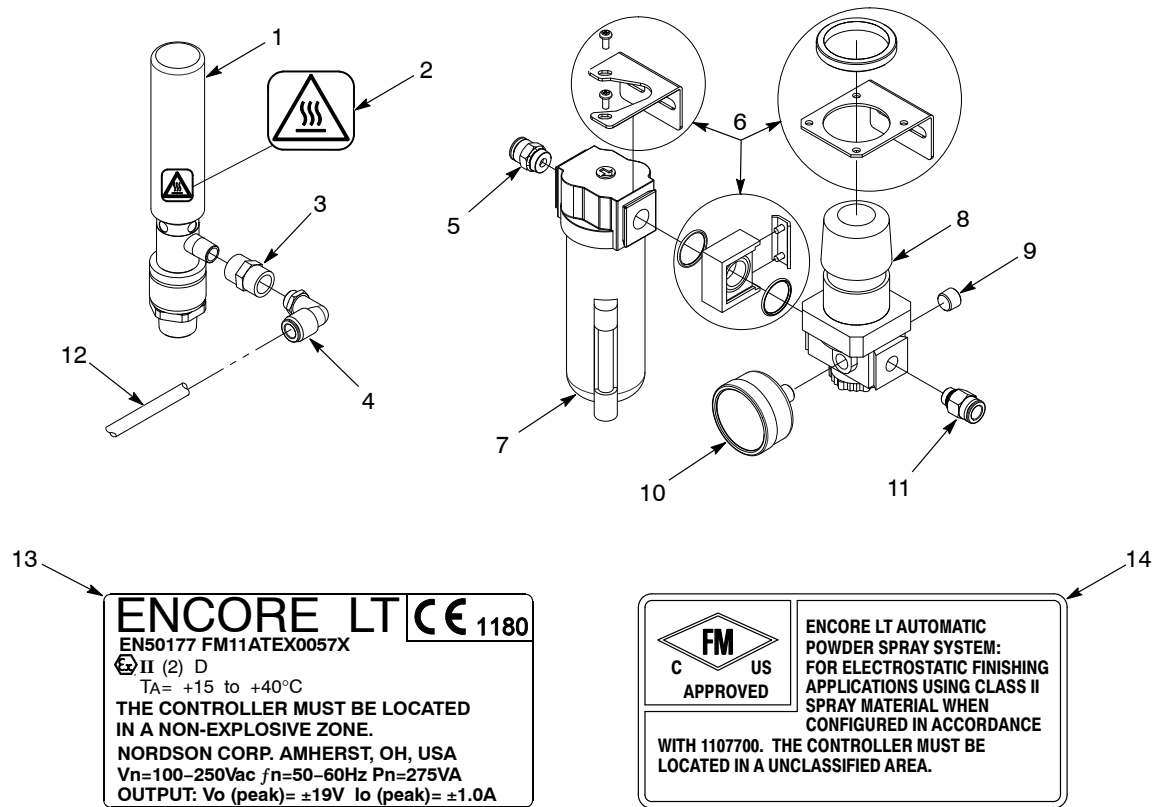


Figure 6 Parts

Item	Part	Description	Quantity	Note
	1601154	Kit, Cabinet cooler, 1700 BTU/hour	1	
1	1601156	• Cooler with filter and cold air distribution kit	1	
2	178475	• Tag, hot surface	1	
3	973500	• Coupling, pipe, 1/4	1	
4	972125	• Connector, male, elbow, 10 mm T x 1/4 uni	1	
5	971102	• Connector, male, 10 mm T x 3/8 uni	1	
6	1601158	• Kit, coupling and mounting	1	
7	-----	• Filter	1	A
8	1601157	• Regulator with gage	1	
9	-----	• Plug	1	B
10	-----	• Gage	1	B
11	972841	• Connector, male, elbow, 10 mm T x 3/8 uni	1	
12	900740	• Tubing, Polyurethane, 10/6.5-7 mm	20 ft	
13	1600440	• Label, FM, Encore	1	
14	1600447	• Label EU, controller, Auto Encore LT	1	
NS	939004	• Strap, cable	6	
NOTE A: This part is included with item 1.				
B: This part is included with item 8.				
NS: Not Shown				

Notes:

[illegible]