

Encore® LT Multi-Gun Controller Upgrade Kit



WARNING: Allow only qualified personnel to perform the following tasks. Follow the safety instructions in this document and all other related documentation.



WARNING: Shut down all power to the system before performing any of these procedures.

Description

The Encore LT Multi-Gun Controller Upgrade Kit is used for adding controllers to the Encore LT Automatic Controller cabinet when additional spray guns are being added to a system. Each kit allows the user to add two additional guns.

The multi-gun controller can control up to a maximum of 8 automatic guns.

NOTE: Multi-gun controllers with Axis Controllers and standalone Axis Controllers must be installed in a non-hazardous area.

Installation

All automatic controllers have the following components:

- Gun controllers
- Rear panels with power supply and manifold(s)

Rear Panel

1. Remove the blank plates and their screws from the front and rear of the cabinet.
2. See Figure 1. From the rear cabinet side, cut the cable tie securing the power harness with two connectors.

NOTE: The power harness connection is designed to be connected using only one orientation.

3. Connect the power harness and the insulated spade terminal to the rear panel power supply.

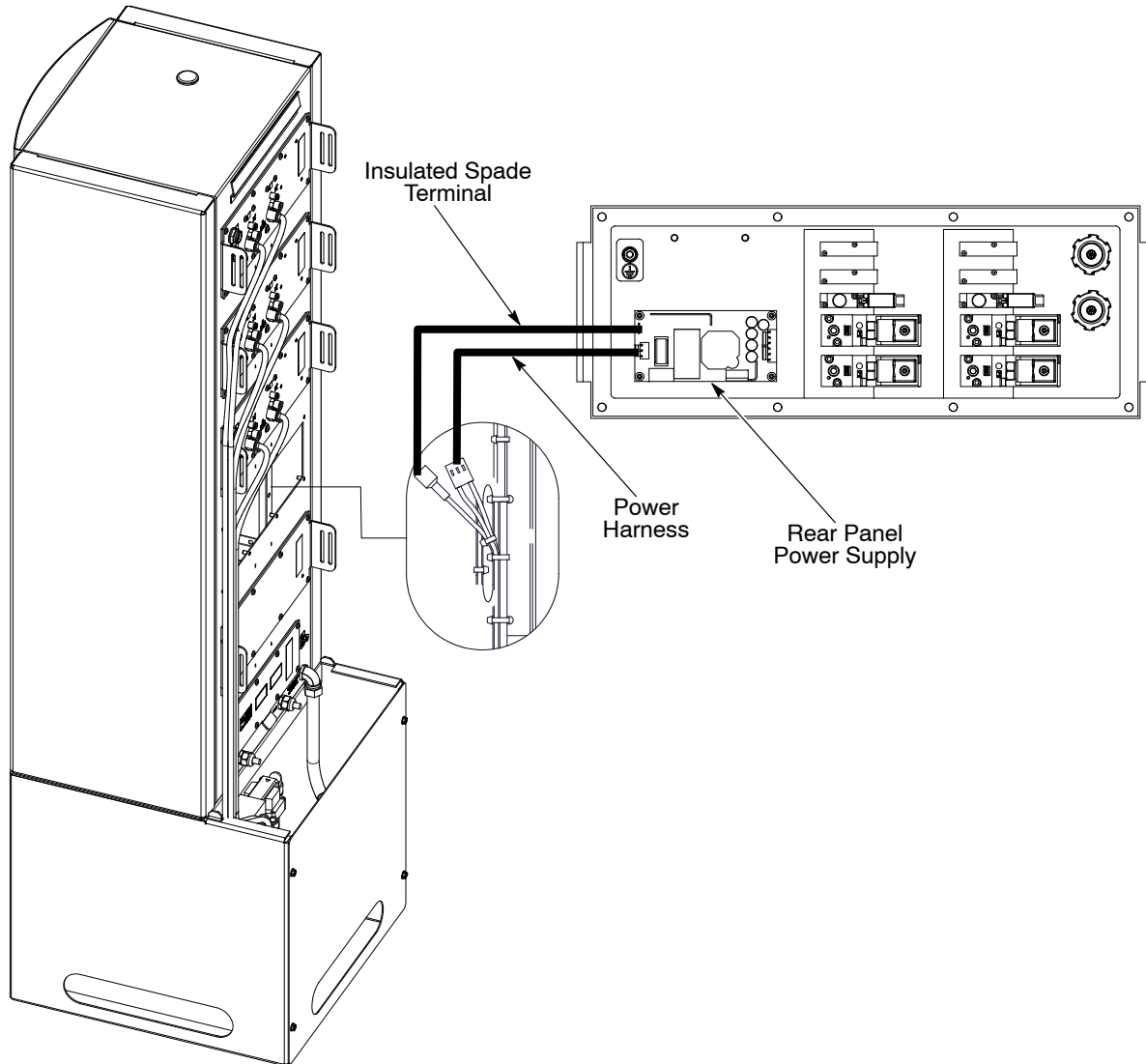


Figure 1 Rear View of Cabinet showing Power Harness Connection

4. Pull the harness cables for the DC power, valves, gun receptacles, and regulators through the cabinet to allow for connection to the PCA on the back of the keypad panel.
5. Secure the rear panel to the cabinet with M5 screws (8), but do not tighten till end of procedure.

- Use Figure 2 to route harnesses along the middle bar and create the proper cross over. Use cable ties to secure harnesses in place.

NOTE: All cable harnesses should provide a service loop for the rear panel to be removed and accessed for repairs. Use the harness routing of the existing rear panels as examples.

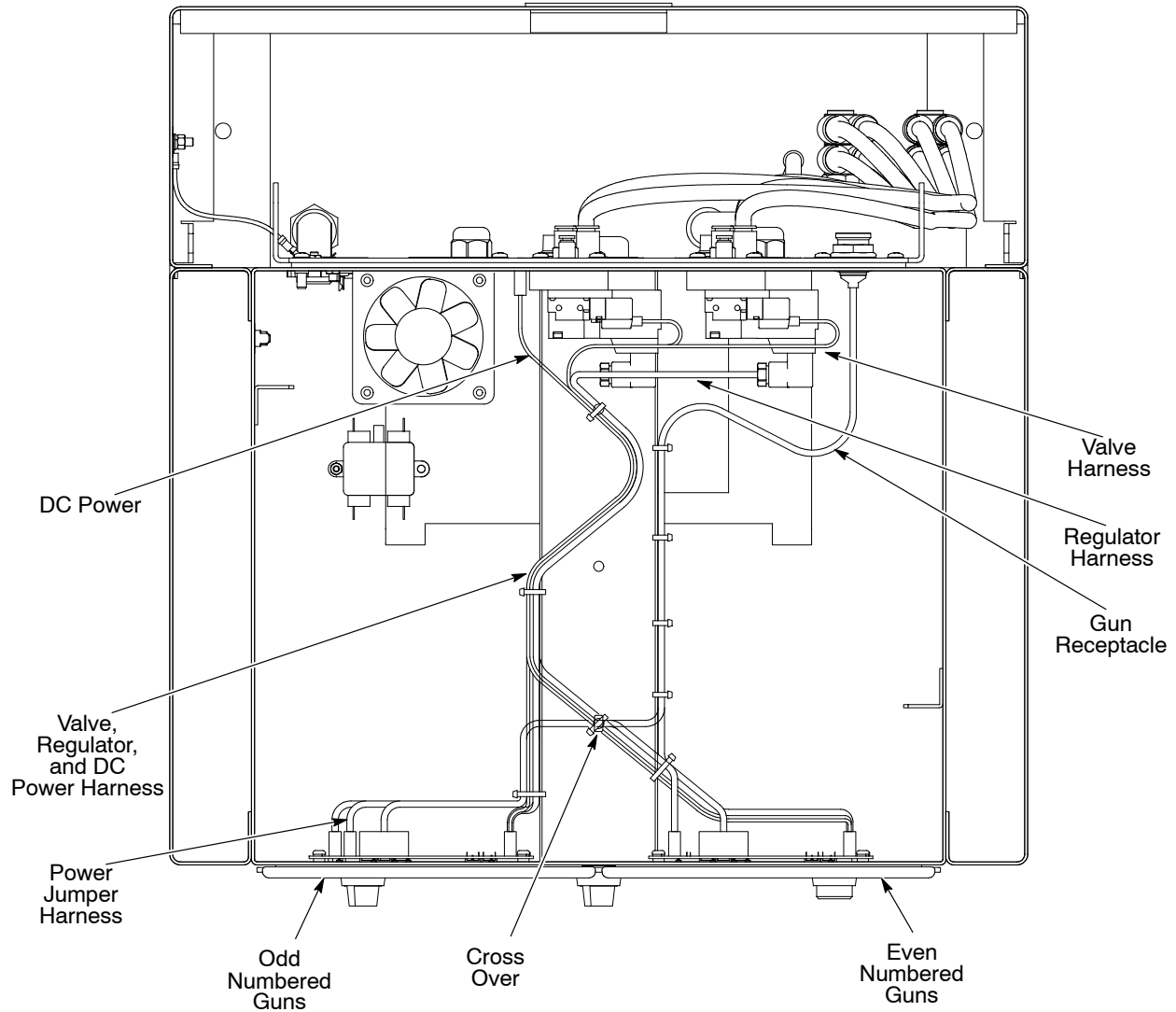


Figure 2 Overhead View of Cabinet showing Harness Cross Over and Connections

7. See the schematics in Figures 6 and 7 to connect the DC power, valve, gun receptacle, and regulator harnesses to each PCA.
8. Install the new main control board on the keypad following the instruction sheet included with PCA.
9. See Figure 3. Connect the ribbon cable from the keypad to the J8 connector on the PCA board.
 - a. Locate the J8 connector.
 - b. Gently pull the black bar on the cable connector away from the white connector.
 - c. Align the ribbon cable with the connector.
 - d. Fully insert the ribbon cable into the connector, past the white line marked on the ribbon.
 - e. Push the black bar back into the connector to secure.

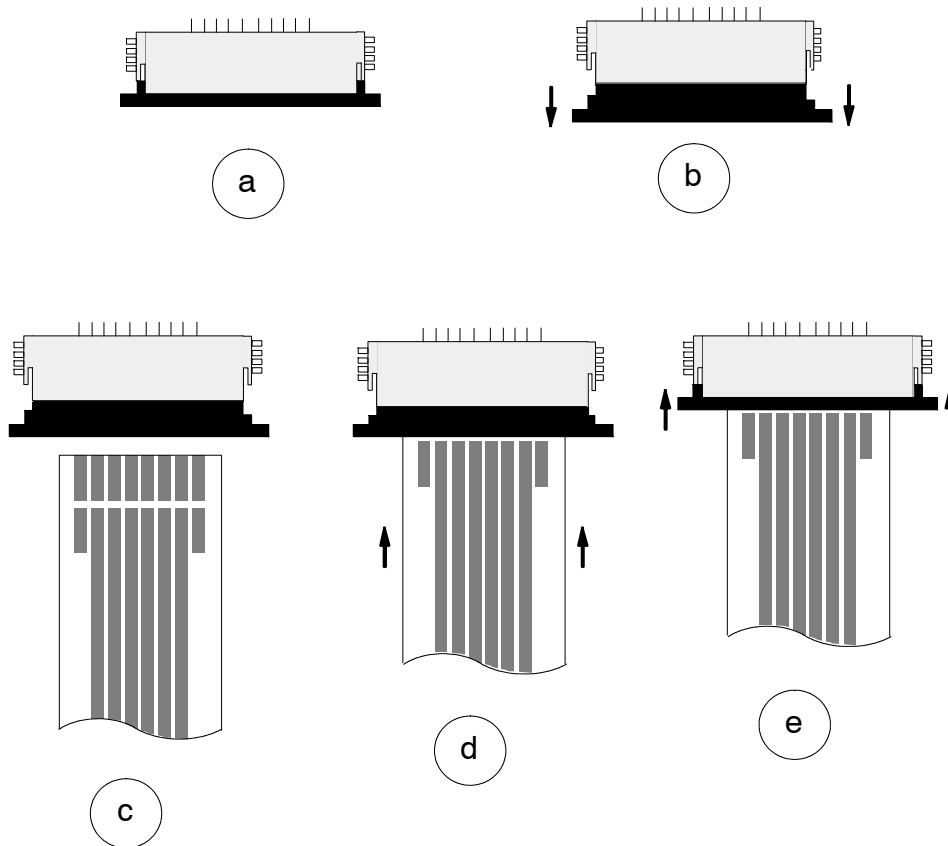


Figure 3 Keypad to PCA Board Connection - Connecting Ribbon Cable to J8 Connector

10. See Figure 4. Connect the harness and cables to the board. Connect the solenoid wires to the J4 connector as follows:
 - a. Insert a tool in the small hole in the top front of each orange tab on the connector and pull the tab up.
 - b. Insert the unstripped solenoid valve wires into the holes in the side of the tabs as shown in Figure 4.
 - c. Press the tabs down. The tabs pierce the wire insulation and clamp the wires in place.
11. Set JP1 for an automatic controller before installing the board and keypad into the controller.

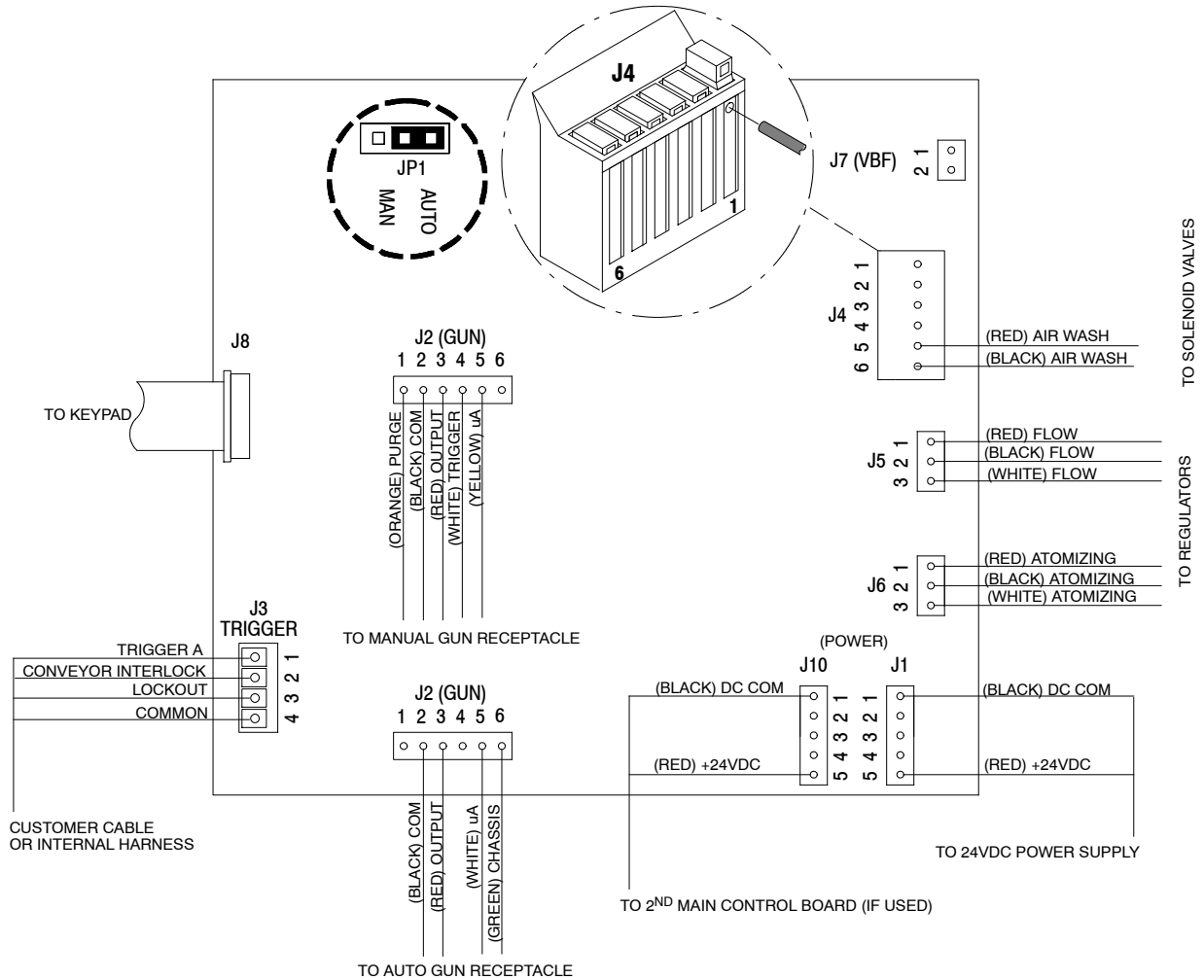


Figure 4 Main Control Board JP1 Jumper Setting and Electrical Connections

12. See Figure 5. Use the M5 flat head screws provided with the keypad panel kit to secure the panel into place.
13. Place the bezel over the keypad and secure to the cabinet using M5 button head screws and washers.
14. Repeat steps 7 through 13 for the second keypad panel.
15. Use the provided labels to label each gun on the bezel and the rear panel. Even numbered guns will all be on one side, and odd numbered guns will be on the other side.
16. With the supplied 10mm air tubing, run the supply tubes from the controller manifold to the rear panel.
17. Power on the controller and verify operation.
18. Tighten the screws on the rear panel.
19. Complete the pneumatic tube connections for the pump supply and the gun air tubing.
20. Connect the gun cables to the rear panel.
21. Turn on the input air pressure and electrical power to the controller.
22. Verify the new gun installation for proper pneumatic and electrostatic operation.
23. Secure all tubes and cables and re-install the cabinet cover panel.

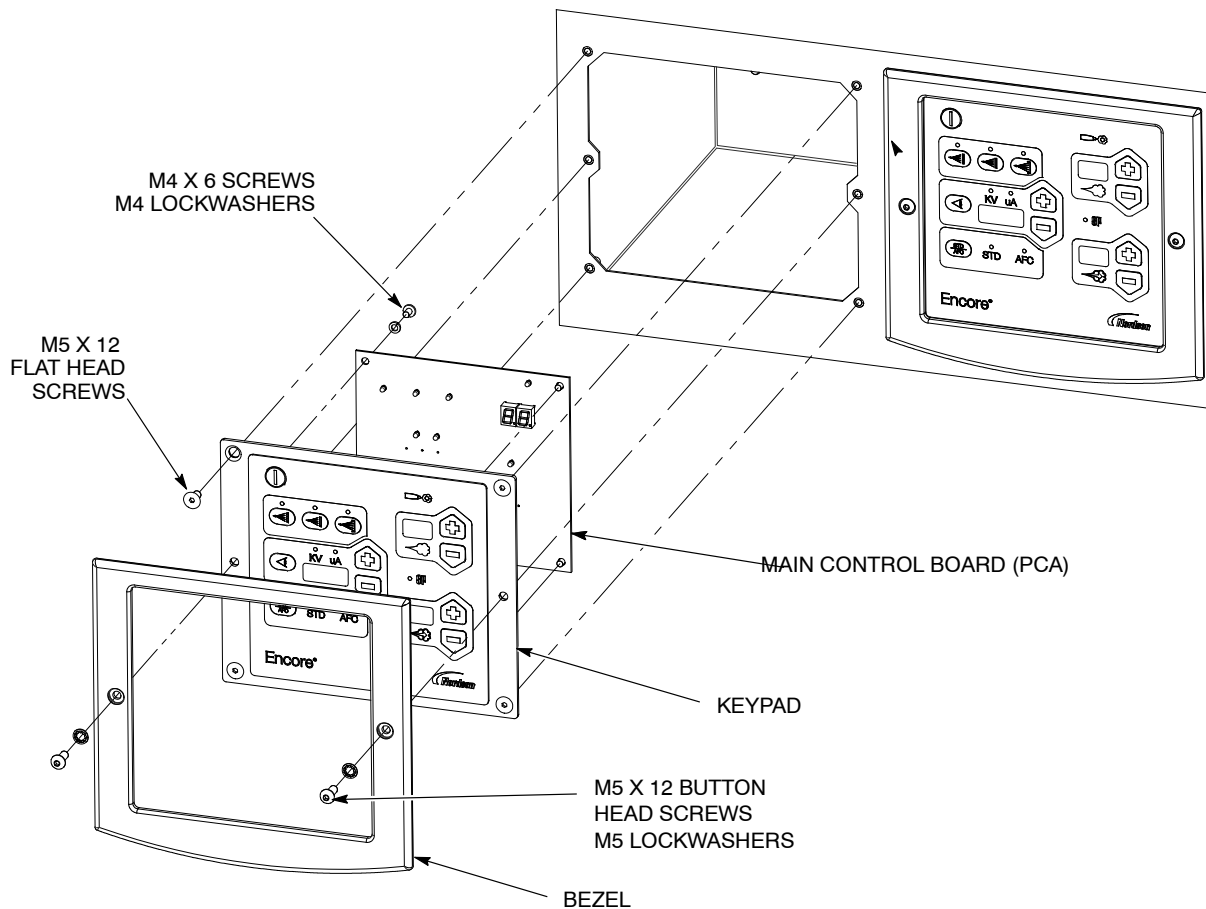


Figure 5 Installing the Keypad Assembly on Front Panel

Parts

To order parts, call the Nordson Finishing Customer Support Center at (800) 433-9319 or contact your local Nordson representative.

See the Encore LT Automatic Controller manual (1107712) for a complete parts list.

Upgrade Kit

Part	Description	Quantity	Note
1601153	KIT, 2 gun upgrade, Encore Auto Controller	1	

Encore Automatic Spray Guns

Part	Description	Quantity	Note
1097489	GUN, auto, bar mount, Encore	1	
1613693	GUN, auto, tube mount, Encore, 5 ft, 2-gun pack	1	
1613694	GUN, auto, tube mount, Encore, 5 ft, 1-gun pack	1	
1613691	GUN, auto, tube mount, Encore, 6 ft, 2-gun pack	1	
1613692	GUN, auto, tube mount, Encore, 6 ft, 1-gun pack	1	

System Parts and Options

Part	Description	Quantity	Note
1097537	CABLE, auto, Encore, 8 meter (26.25 ft)	1	
1097539	CABLE, auto, Encore, 12 meter (39.4 ft)	1	
1097540	CABLE, auto, Encore, 16 meter (52.5 ft)	1	
768176	POWDER HOSE, 11 mm antistatic	1	
768178	POWDER HOSE, 12.7 mm (1/2 in) antistatic	1	
900648	POWDER HOSE, 11 mm blue	1	
900650	POWDER HOSE, 12.7 mm (1/2 in) blue	1	
900617	AIR TUBING, 4 mm, clear	1	
900618	AIR TUBING, 8 mm, blue	1	
900619	AIR TUBING, 8 mm, black	1	
900740	AIR TUBING, 10 mm, blue	1	
900517	TUBING, poly, spiral cut, 0.62 in. ID	1	
301841	STRAP, Velcro, w/buckle, 25 x 3 cm	1	

Issued 03/19

Original copyright date 2012. Encore, Nordson, and the Nordson logo are registered trademarks of Nordson Corporation.

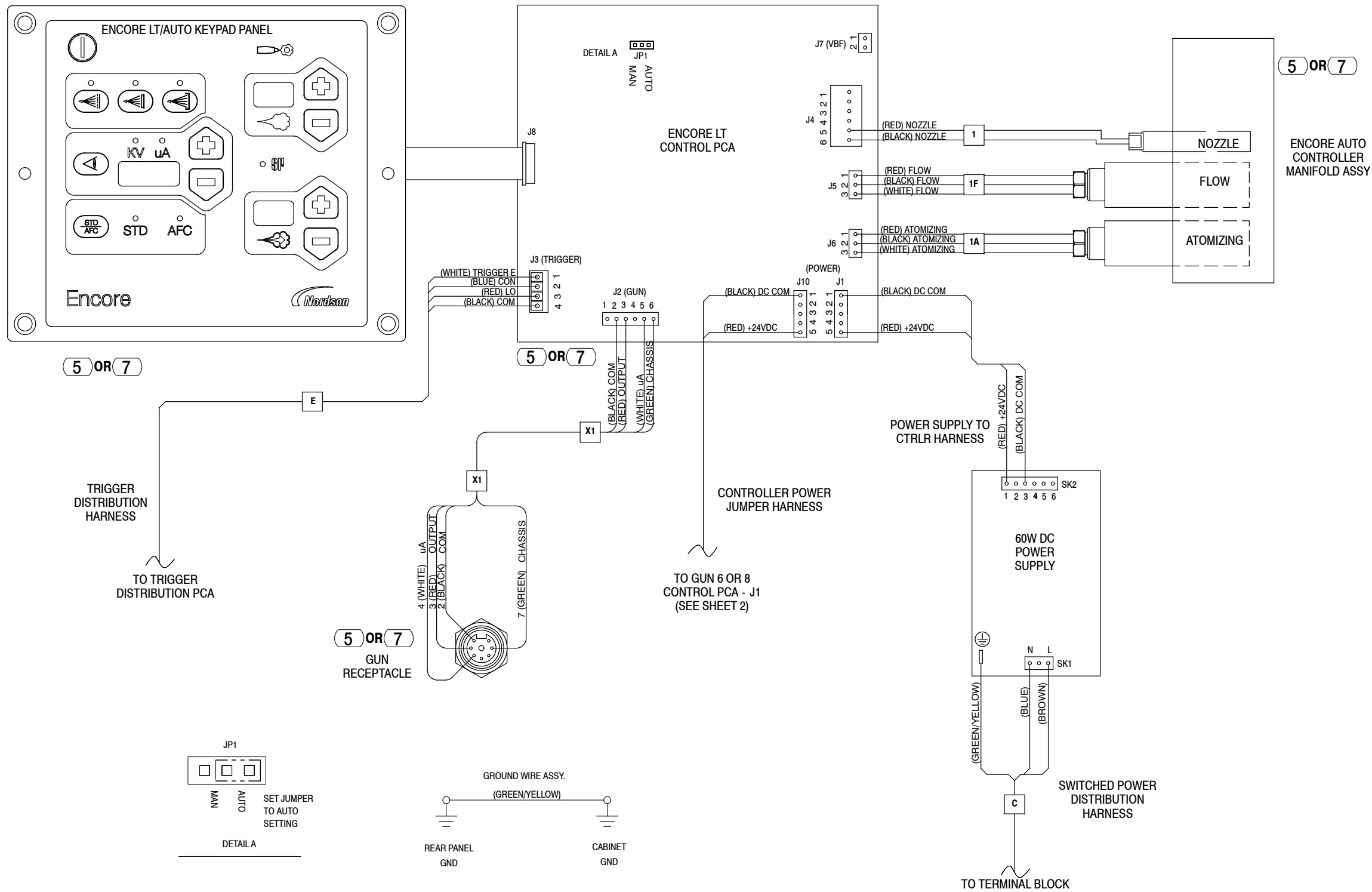


Figure 6 Main Gun Controller Wiring Diagram (1 of 2)

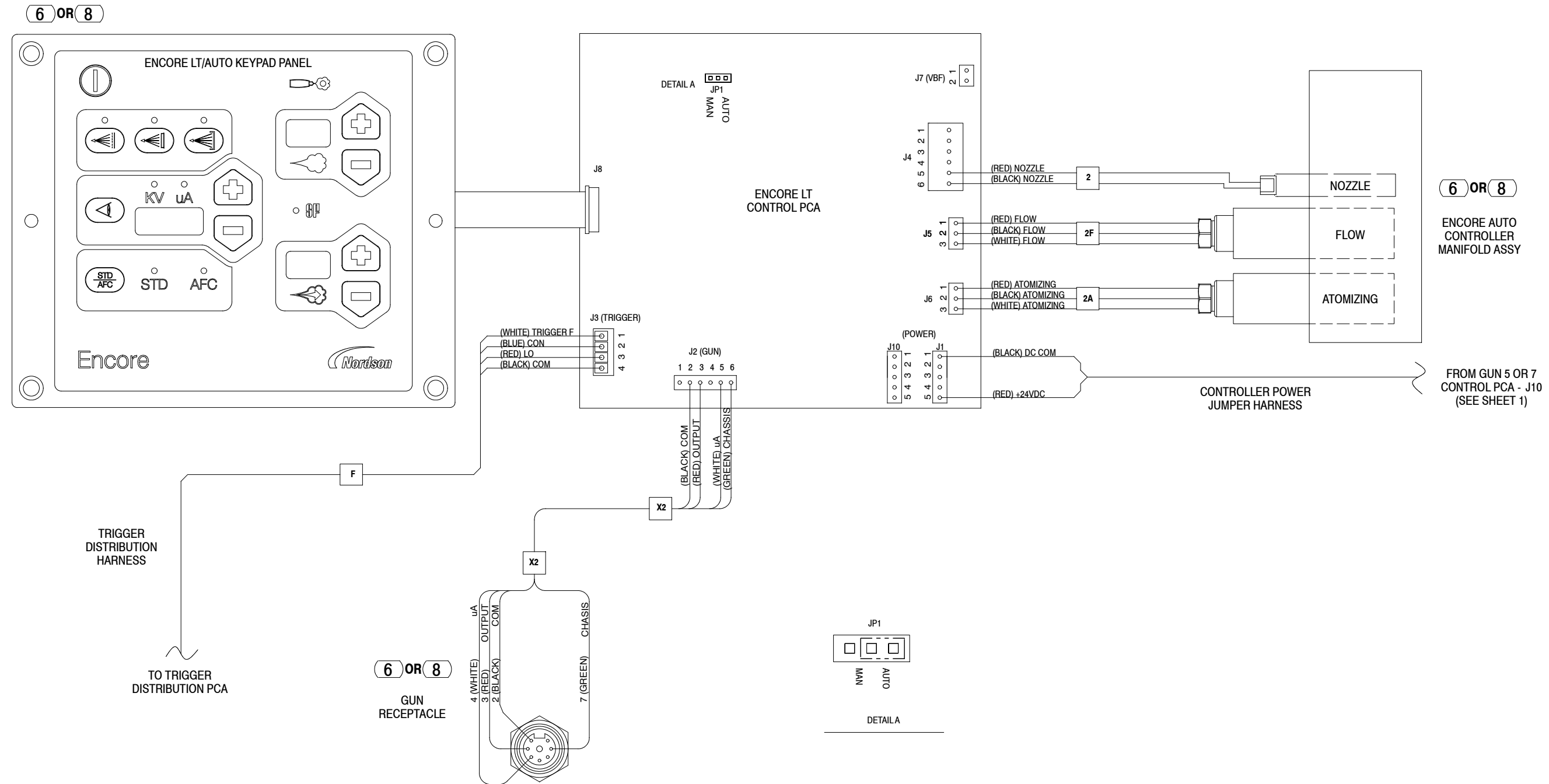


Figure 7 Multi-Gun Controller Wiring Diagram (2 of 2)