

# Prodigy® iControl® Power Supply Kit

This instruction sheet is a guide for replacing the two power supply configuration to a single power supply on the Prodigy iControl sub-panel. If either power supply should fail, both will be replaced with the single power supply provided in the power supply kit.

**NOTE:** Prodigy iControl may have two sub-panels for a total of four power supplies. Only replace the power supplies on the sub-panel with the failed power supply.



**WARNING:** Allow only qualified personnel to perform the following tasks. Follow the safety instructions in this document and all other related documentation.

## Removing the Old Power Supplies



**WARNING:** Turn all power off to the system before performing any procedures.

### ***Remove the Sub-Panel from the Cabinet***

See Figure 1.

1. Disconnect any gun cables from the gun cards (16).
2. Disconnect the DC power harnesses (4 and 12) from the P1 header (3) and P4 header (13).
3. Disconnect the AC power harness (9) at the terminal block(8).
4. Disconnect any CAN connections (15) on the back plane (2).

**NOTE:** If replacing power supplies on the bottom sub-panel remove any cableties and disconnect the signal interface harness (5) from the P2 header (17).

5. Remove the sub-panel (1) from the cabinet by removing four 13-mm nuts (14).

### ***Remove the Power Supplies***

6. Remove the 60W power supply (7) by removing the four screws (6) from the back of the sub-panel (1).
7. To remove the 24V–250W power supply (10), support the power supply bracket (22) and remove the four M4 x 12 screws (21). Put the screws aside for installation of the new power supply.

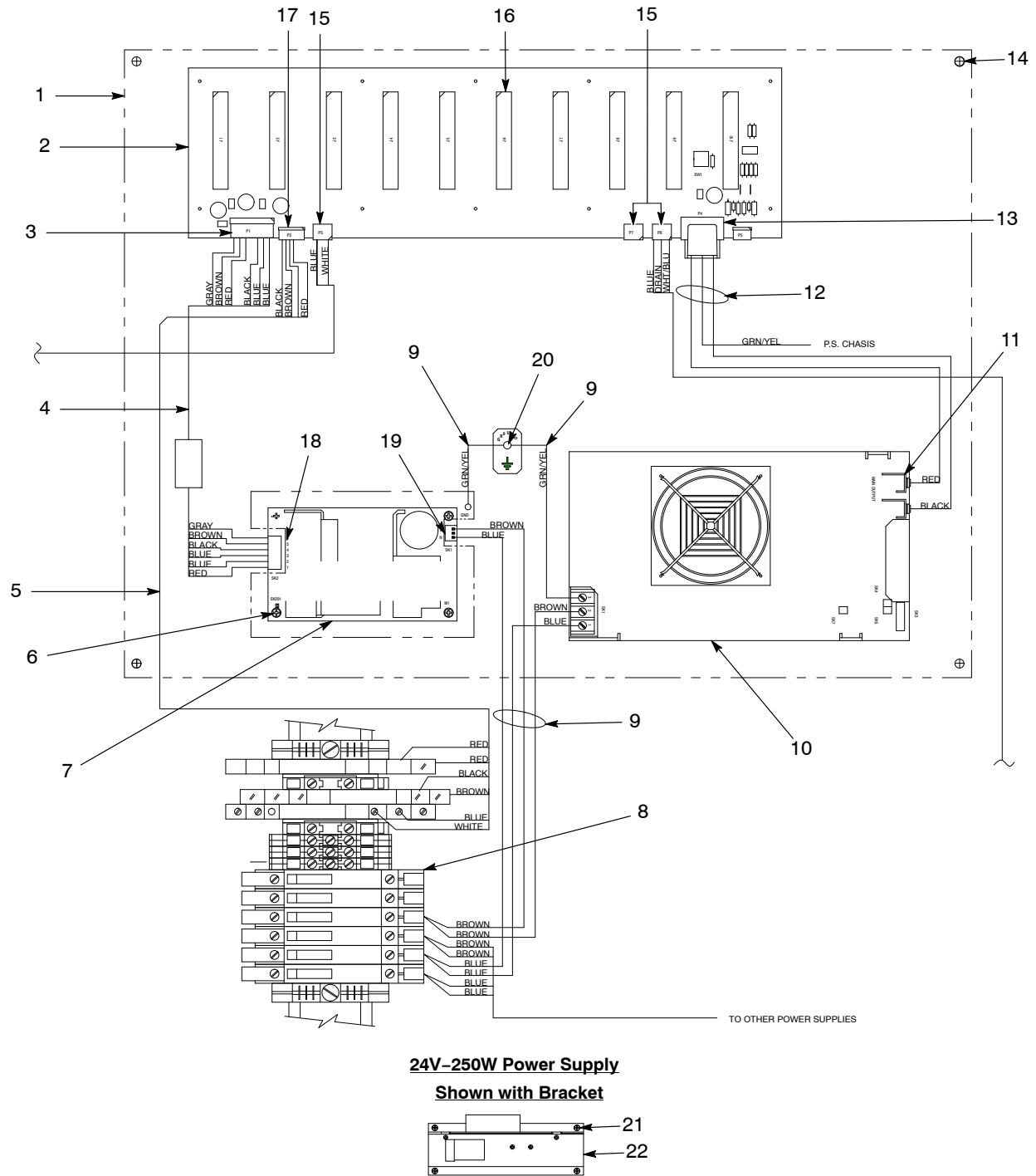


Figure 1 iControl Main Cabinet Sub-Panel with Old Power Supplies

- |                                   |                                |                            |
|-----------------------------------|--------------------------------|----------------------------|
| 1. Sub-panel                      | 8. Terminal block              | 15. CAN connections        |
| 2. Back plane                     | 9. AC power harness            | 16. Gun cards              |
| 3. P1 header                      | 10. 24V-250W power supply      | 17. P2 header              |
| 4. +5, +12, -12V DC power harness | 11. Power supply terminals     | 18. Power supply terminals |
| 5. Signal interface harness       | 12. 24V DC power harness group | 19. Power supply terminals |
| 6. Screws (4)                     | 13. P4 header                  | 20. Ground stud            |
| 7. 60W power supply               | 14. 13-mm nuts (4)             | 21. M4 x 12 screws (4)     |
|                                   |                                | 22. Power supply bracket   |

## Installation of New Power Supply

See Figures 2 and 3.

Use the power supply kit to install the new single power supply and new harnesses.

1. Re-install the sub-panel (1) to the cabinet using the four 13-mm nuts (12).
2. Install the new bracket (17) onto the sub-panel with the four M4 x 12 screws (20) used with the old bracket.
3. Connect the AC harness (7) to the AC input terminal (9) and the terminal block (6).
4. Connect the first DC harness (4, 10) to the power supply terminals (16A and 16B for harness 4, 16C for harness 10) and the P1 header (3) on the back plane (2).
5. Mount the power supply (8) to the bracket (17) using four M4 x 6 screws (18) and washers (19).
6. Replace CAN connections (13) on the back plane (2).
7. Connect all gun cables to gun cards (14).

**NOTE:** If installing the power supply on the bottom sub-panel, connect the signal interface harness (5) to the P2 header (15) on the back plane (2).

8. Dress out wires and use cableties to secure wires in place.

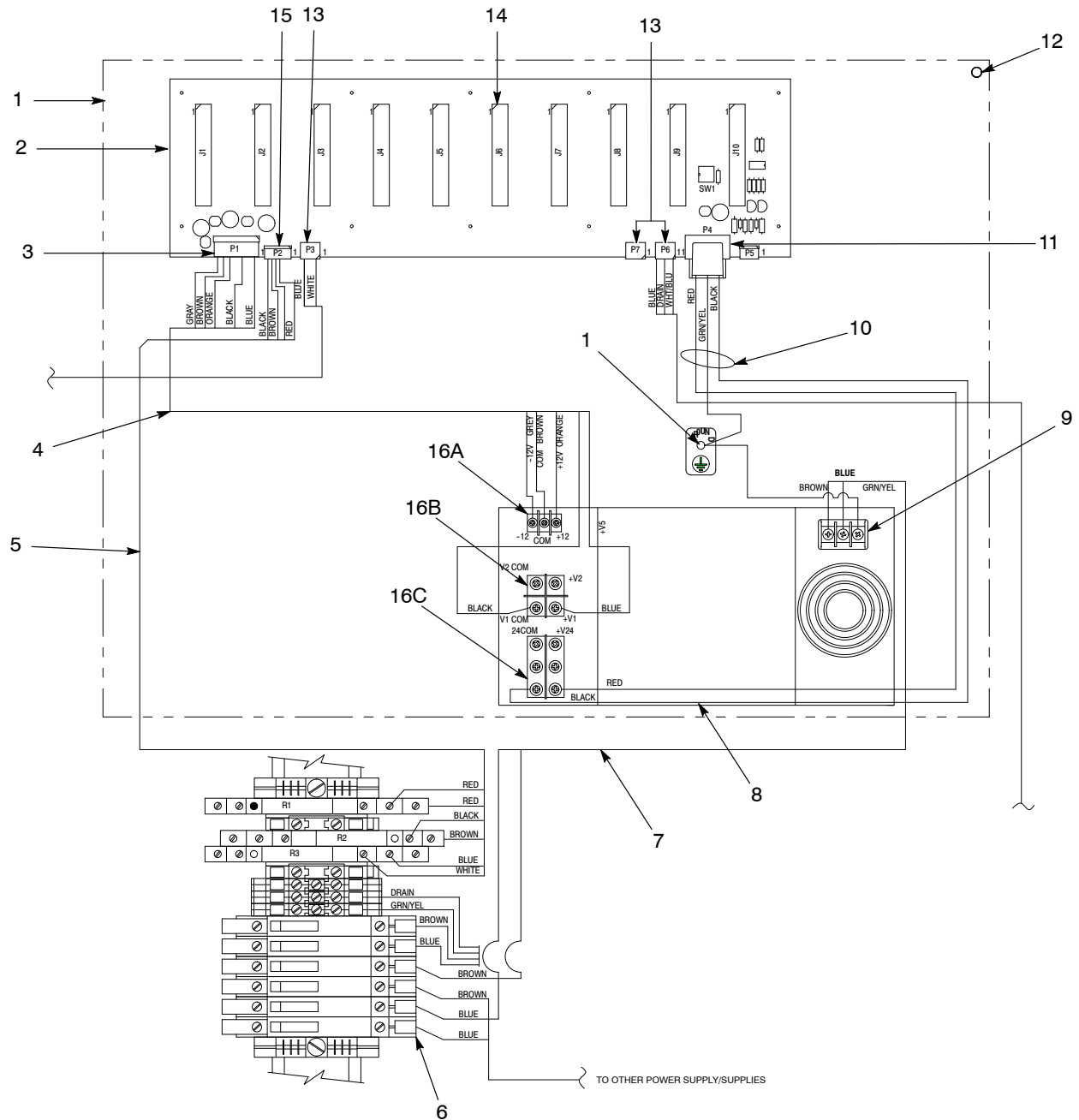


Figure 2 Prodigy iControl Main Cabinet Sub-panel with New Power Supply

- |                                     |                       |                                       |
|-------------------------------------|-----------------------|---------------------------------------|
| 1. Sub-panel                        | 8. 400W power supply  | 15. P2 header                         |
| 2. Back plane                       | 9. AC input terminals | 16A. +24VDC power supply terminals    |
| 3. P1 header                        | 10. +24VDC harness    | 16B. +5VDC power supply terminals     |
| 4. +5V, +12V, -12V DC power harness | 11. P4 header         | 16C. +/- 12VDC power supply terminals |
| 5. Signal interface harness         | 12. 13-mm nuts (4)    |                                       |
| 6. Terminal block                   | 13. CAN connections   |                                       |
| 7. AC power harness                 | 14. Gun cards         |                                       |

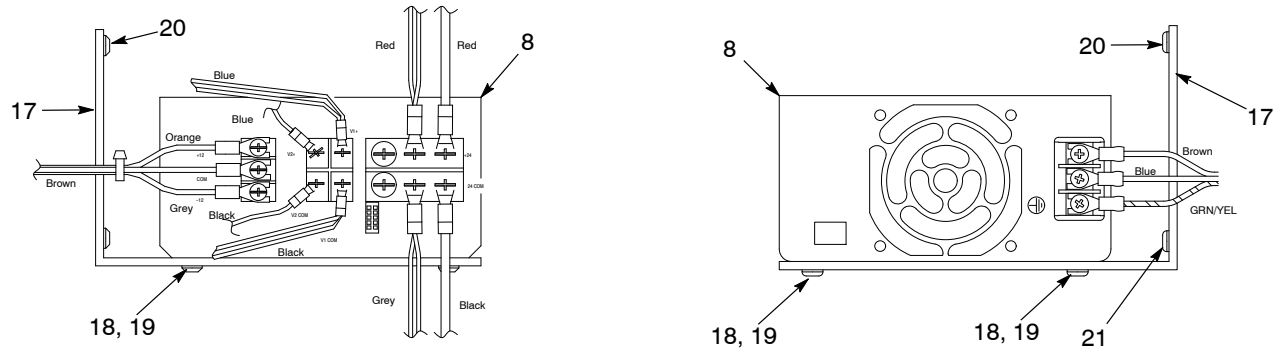


Figure 3 Power Supply with Bracket

- |                          |                       |                        |
|--------------------------|-----------------------|------------------------|
| 8. 400W power supply     | 18. M4 x 6 screws (4) | 20. M4 x 12 screws (4) |
| 17. Power supply bracket | 19. Washers (4)       |                        |

## Parts

To order parts, call the Nordson Finishing Customer Support Center at (800) 433-9319 or contact your local Nordson representative.

Part	Description	Quantity	Note
1107143	KIT, power supply, single, Prodigy, iControl	1	
1098442	• POWER SUPPLY, 400W, +24V, +/-12V, +5V, 5 slot	1	
1105301	• HARNESS, power, +5, +12, -12, iControl, Prodigy	1	
1105303	• HARNESS, power, AC	1	
1105304	• HARNESS GROUP, power, 24V	1	
939110	• CABLETIE, 3.9-in, 185F/85C, nylon, natural	10	
1098443	• BRACKET, power supply, iControl, right angle	1	
983403	• WASHER, lock, m, spt, M4, steel, zinc	4	
982164	• SCREW, pan, slt, M4 x 6, zinc	4	

Issued 04/20

Original copyright date 2011. Prodigy, iControl, Nordson and the Nordson logo are registered trademarks of Nordson Corporation.