

# Standard iControl® Power Supply Kit

This instruction sheet is a guide for upgrading to the Standard iControl Power Supply.



**WARNING:** Allow only qualified personnel to perform the following tasks. Follow the safety instructions in this document and all other related documentation.

## Removing Old Power Supply



**WARNING:** Turn all power off to the system before performing any procedures.

See Figure 1.

1. Cut any cableties away from the AC power harness (8) and DC power harness (4).
2. Disconnect the AC power harness (8) from the terminal block (9).
3. Disconnect the DC power harness (4) by disconnecting at the P1 header (2) on the back plane (1).
4. Disconnect the digital flow connections (3) from the power supply terminals (5A and 5B).
5. Support the power supply bracket (11) while removing the M4 x 12 screws (12) and save these screws for installation of the new power supply.
6. Remove the bracket (11), power supply (10), along with the DC and AC harness (4, 8) from the sub-panel.

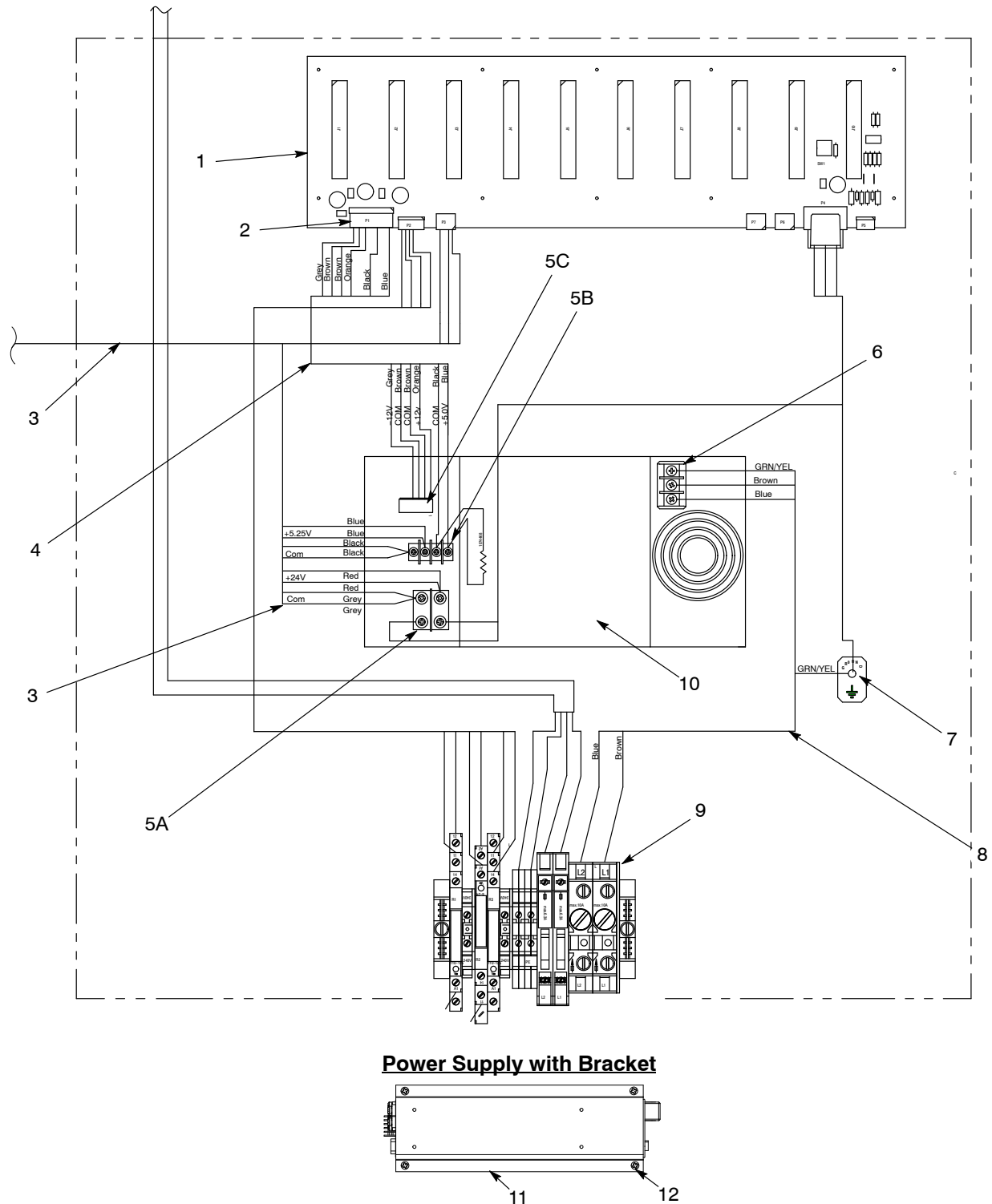


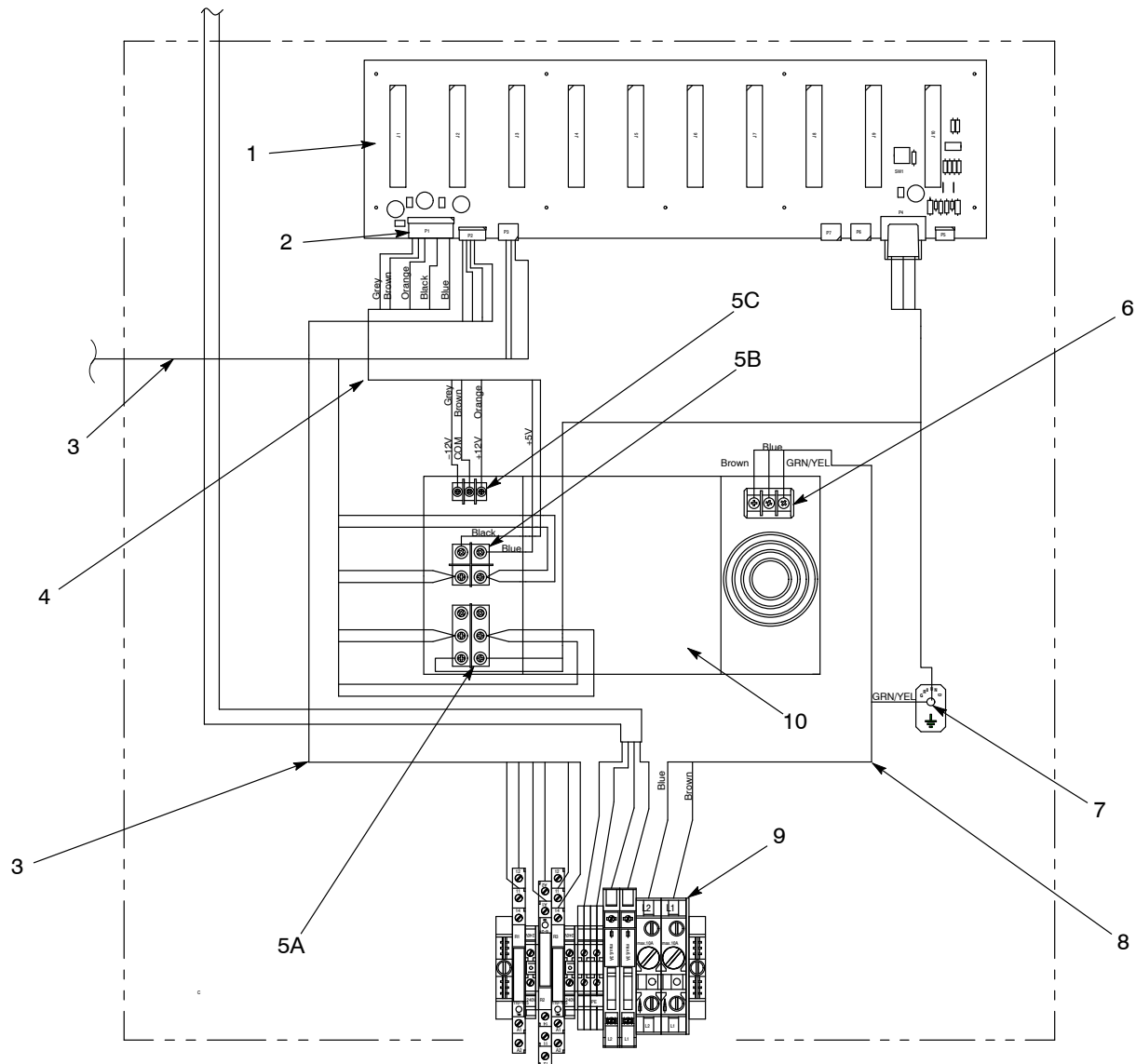
Figure 1 iControl Main Cabinet Sub-Panel with Old Power Supply

- |                                   |                                      |                                       |
|-----------------------------------|--------------------------------------|---------------------------------------|
| 1. Back plane                     | 5B. +5VDC power supply terminals     | 9. Terminal blocks, relays, and fuses |
| 2. P1 header                      | 5C. +/- 12VDC power supply terminals | 10. Power supply                      |
| 3. Digital airflow connections    | 6. AC input terminals                | 11. Bracket                           |
| 4. DC power harness               | 7. Ground stud                       | 12. M4 x 12 screws (4)                |
| 5A. +24VDC power supply terminals | 8. AC power harness                  |                                       |

## Installing New Power Supply

See Figure 2. Use the iControl Power Supply Kit to install the new power supply and new harnesses.

1. Mount the new bracket (11) onto the sub-panel using the M4 x 12 screws (12) saved from the power supply removal.
2. Connect the new AC power harness (8) to the AC input terminals (6), the terminal block (9) and ground stud (7). Follow wire colors as shown in Figure 2.
3. Connect the DC power harness (4) to power supply terminals (5B and 5C) and the P1 header (2) on the back plane (1).
4. Connect the digital flow harness (3) to the power supply terminals (5A and 5B).
5. Mount the new power supply (10) onto the bracket (11) with the label facing up and the AC power harness connections (6) on the right side.
6. Use the M4 x 6 screws (12) and washers (13) to secure the power supply (10) to the bracket (11).
7. Dress out wires with provided cableties.



### Power Supply with Bracket

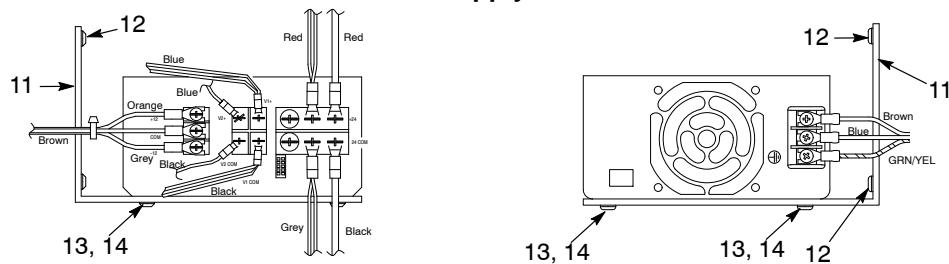


Figure 2 iControl Main Cabinet Sub-Panel with New Power Supply

- |                                   |                                       |                        |
|-----------------------------------|---------------------------------------|------------------------|
| 1. Back plane                     | 5C. +/-12VDC power supply terminals   | 10. Power supply       |
| 2. P1 header                      | 6. AC input terminals                 | 11. Bracket            |
| 3. Digital airflow connections    | 7. Ground stud                        | 12. M4 x 12 screws (4) |
| 4. DC power harness               | 8. AC power harness                   | 13. M4 x 6 screws (4)  |
| 5A. +24VDC power supply terminals | 9. Terminal blocks, relays, and fuses | 14. Washers (4)        |
| 5B. +5VDC power supply terminals  |                                       |                        |

## Parts

To order parts, call the Nordson Finishing Customer Support Center at (800) 433-9319 or contact your local Nordson representative.

Part	Description	Quantity	Note
1107142	KIT, power supply, Ace, Standard iControl	1	
1098442	<ul style="list-style-type: none"><li>POWER SUPPLY, 400W, +24V, +/-12V, +5V, 5 slot</li></ul>	1	
-----	<ul style="list-style-type: none"><li>HARNESS, power, +5, +12, -12V, iControl</li></ul>	1	
-----	<ul style="list-style-type: none"><li>HARNESS, power, AC, iControl</li></ul>	1	
939110	<ul style="list-style-type: none"><li>CABLETIE, 3.9-in, 185F/85C, nylon, natural</li></ul>	10	
-----	<ul style="list-style-type: none"><li>BRACKET, power supply, iControl, right angle</li></ul>	1	
983403	<ul style="list-style-type: none"><li>WASHER, lock, m, spt, M4, steel, zinc</li></ul>	4	
982164	<ul style="list-style-type: none"><li>SCREW, pan, slt, M4 x 6, zinc</li></ul>	4	

Issued 03/2020

Original copyright date 2011. iControl, Nordson, and the Nordson logo are registered trademarks of Nordson Corporation.