

Nordson® Automatic Spray Gun Support Kits

Customer Product Manual

Part 1104183A02

Issued 09/18

**For parts and technical support, call the
Finishing Customer Support Center at (800) 433-9319.**

This document is subject to change without notice.
Check <http://emanuals.nordson.com/finishing> for the latest version.



NORDSON CORPORATION • AMHERST, OHIO • USA

Table of Contents

Introduction	1	Parts Lists	8
Gun Support Kits	1	Single Horizontal Bar Gun Support Kit	9
Horizontal Support Kits	1	Multiple Horizontal Bar Gun Support Kit	10
Vertical Support Kits	2	Single Vertical Bar Gun Support Kit	12
Mounting Bars	2	Multiple Vertical Bar Gun Support Kit	14
Gun Mount and Bar Mount Kits	3	Mounting Bars	16
Horizontal Gun Mounting	3	Gun Mounts	16
Vertical Gun Mounting	4	Vertical Bar Gun Mount for	
Installation	5	Sure Coat/Encore Tube-Mount Guns	16
Support Kit Mounting	5	Horizontal Bar Gun Mount for	
Kit Mounting Plate Installation	5	Sure Coat/Encore Tube-Mount Guns	17
Single Horizontal Bar Gun Support		Horizontal Bar Gun Mount for Prodigy	
Kit Assembly	5	Tube-Mount Guns	18
Multiple Horizontal Bar Gun Support		Vertical Bar Gun Mount for Prodigy	
Kit Assembly	6	Tube-Mount Guns	19
Vertical Bar Gun Support Kit Assembly	7	Universal Bar Mount Kit	20
Grounding	8	Adapter Kit for Versa-Spray Guns	20
		Weights	21
		Mounting Kits and Bars	21
		Guns	21
		Dimensions	22
		Single Horizontal and Vertical Gun Supports ...	22
		Multiple Horizontal and Vertical Gun Supports ..	23

Contact Us

Nordson Corporation welcomes requests for information, comments, and inquiries about its products. General information about Nordson can be found on the Internet using the following address:
<http://www.nordson.com>.

Address all correspondence to:

Nordson Corporation
Attn: Customer Service
555 Jackson Street
Amherst, OH 44001

Notice

This is a Nordson Corporation publication which is protected by copyright. Original copyright date 2010. No part of this document may be photocopied, reproduced, or translated to another language without the prior written consent of Nordson Corporation. The information contained in this publication is subject to change without notice.

Trademarks

Encore, Prodigy, Sure Coat, Versa-Spray, Nordson, and the Nordson logo are registered trademarks of Nordson Corporation.

Nordson Automatic Spray Gun Support Kits

Introduction

This instruction sheet covers the Nordson horizontal and vertical gun support kits, and the mounting bars and mounting kits for bar-mount and tube-mount automatic powder spray guns. These kits can be used on both Nordson gun movers (oscillators or reciprocators) and fixed gun stands. The kits and mounting bars are sold separately to provide flexibility for different guns and applications.

Weights are provided on page 21, and dimensions on pages 22 and 23. The gun mounting configuration must be designed so that the weight of the guns and mountings does not exceed the capacity of the gun mover.

Gun Support Kits

These kits include the parts shown in Figures 1 and 2. They do not include the optional gun mounting bars shown in the illustrations.

Horizontal Support Kits

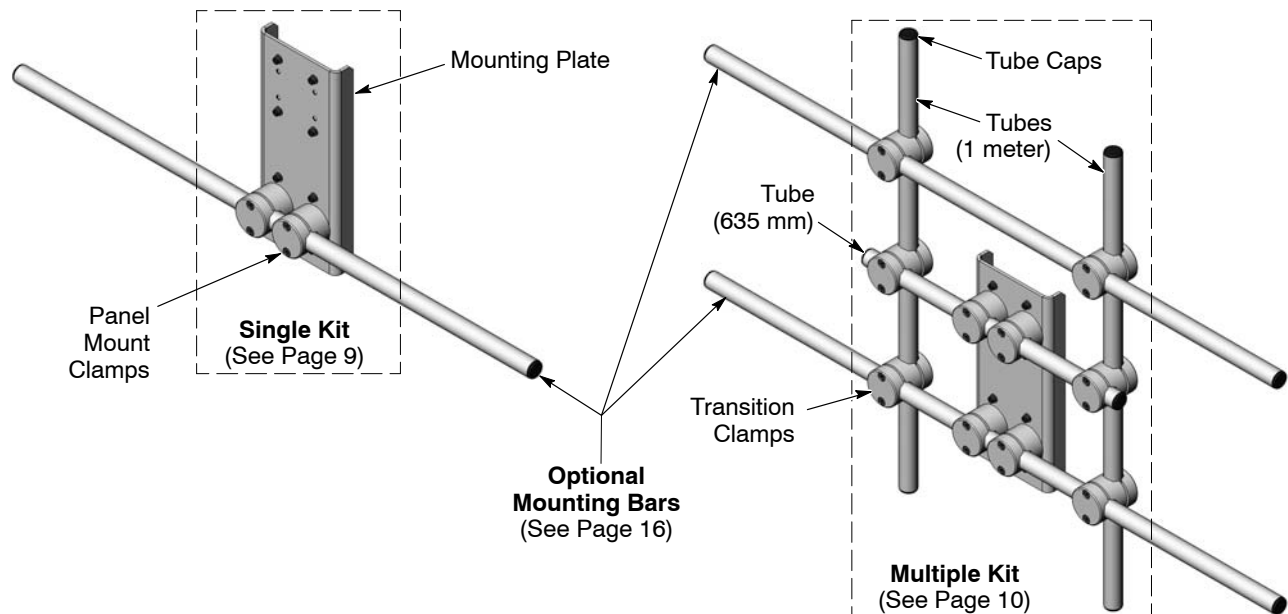


Figure 1 Single and Multiple Horizontal Bar Gun Support Kits

Vertical Support Kits

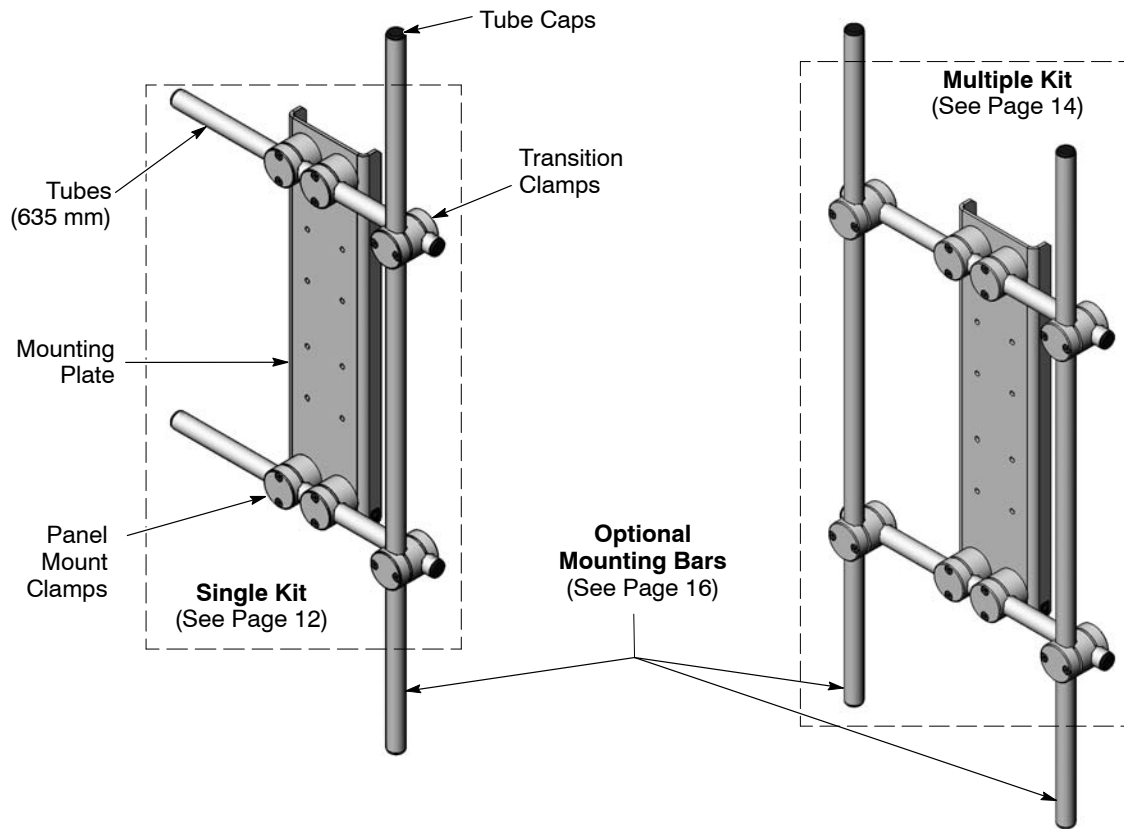


Figure 2 Single and Multiple Vertical Gun Support Kits

Mounting Bars

Mounting bars provide the base for tube-mount gun mounts and bar mounting kits. The mounting bars have an O.D. of 35 mm (1.375 in.). They are available in the following lengths:

- 1 meter (3.2 ft)
- 2 meters (6.5 ft)
- 3 meters (9.8 ft)

See page 16 for mounting bar part numbers.

Gun Mount and Bar Mount Kits

The bar-mount kits are used for both horizontal and vertical gun mounting. For tube-mount guns, different gun mounts are used for horizontal and vertical gun mounting.

Horizontal Gun Mounting

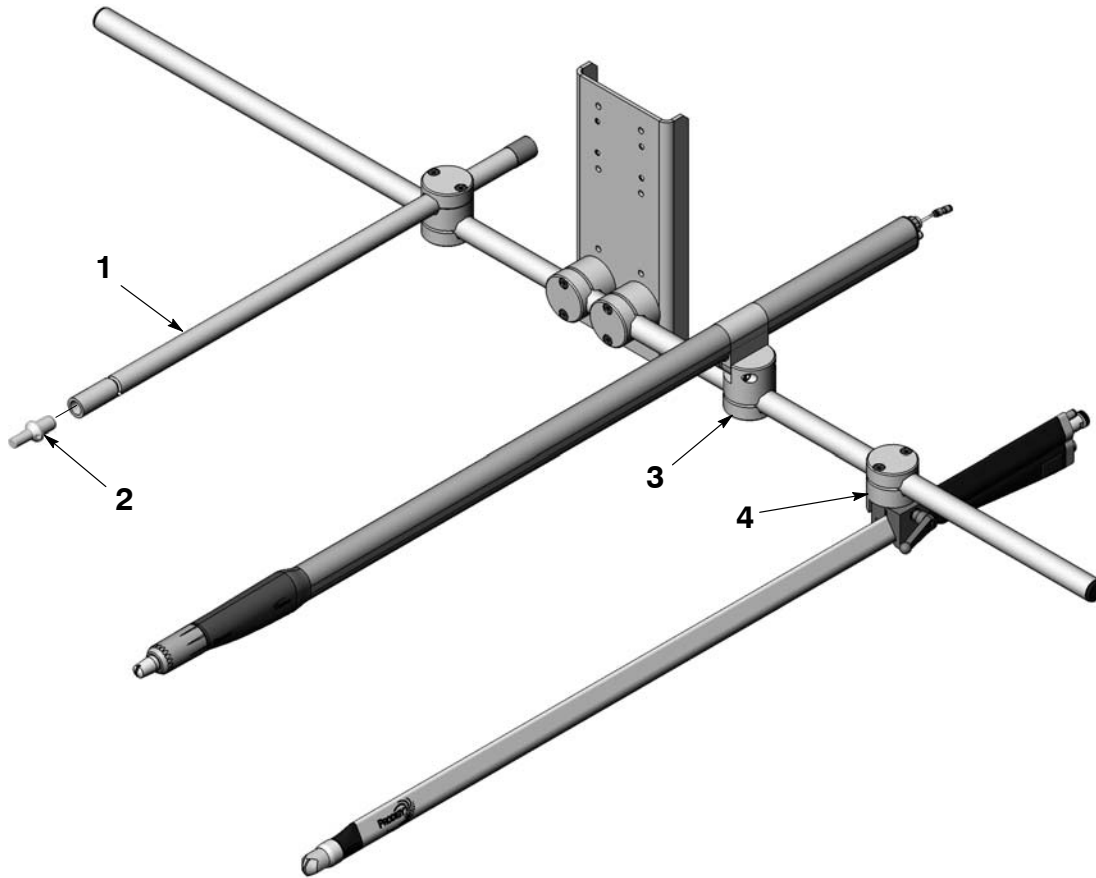


Figure 3 Bar-Mount and Horizontal Gun Mount Kits

Item	Description	See Page
1	Universal bar-mount kit, for all bar-mount guns	20
2	Adapter kit, 0.625 in. to 1.25 in. dia bar, for Versa-Spray® guns	20
3	Horizontal gun mount, Sure Coat®/Encore® tube-mount guns	17
4	Horizontal gun mount, Prodigy® tube-mount gun	18
NOTE: The bar mount kit includes a 1.2 meter (4 ft) bar. This kit is used for both horizontal and vertical gun mounting.		

Vertical Gun Mounting

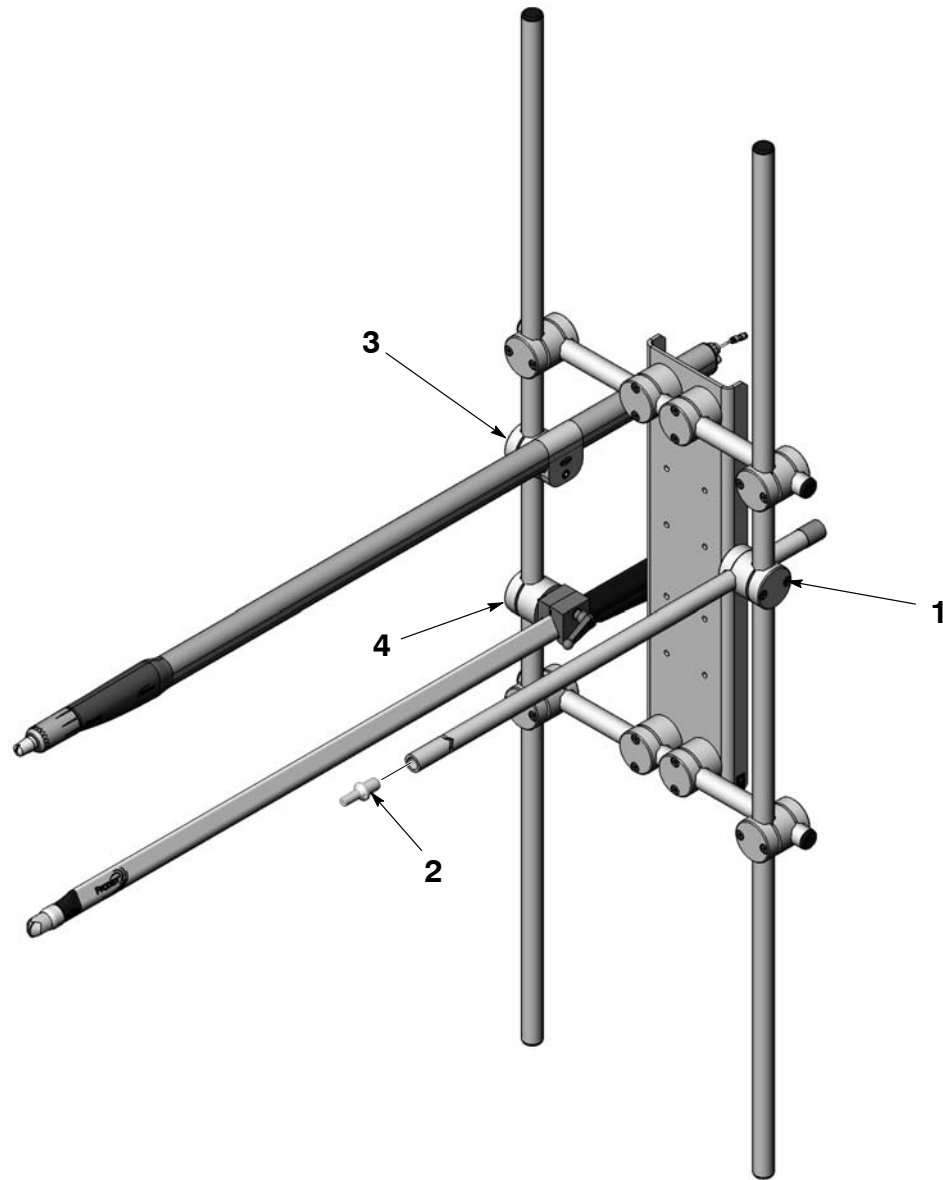


Figure 4 Bar-Mount and Horizontal Gun Mount Kits

Item	Description	See Page
1	Universal bar-mount kit, for all bar-mount guns	20
2	Adapter kit, 0.625 in. to 1.25 in. dia bar, for Versa-Spray® guns	20
3	Vertical gun mount, Sure Coat®/Encore® tube-mount guns	16
4	Vertical gun mount, Prodigy® tube-mount gun	19
NOTE: The bar mount kit includes a 1.2 meter (4 ft) bar. This kit is used for both horizontal and vertical gun mounting.		

Installation

Support Kit Mounting

Kit Mounting Plate Installation

See Figure 5. Gun support kits include M8 x 30 socket-head screws, flat washers, lockwashers, and hex nuts (items 3–6). Secure the mounting plate to the oscillator or reciprocator gun carriage with these fasteners.

Single Horizontal Bar Gun Support Kit Assembly

Install the mounting bar (10) on the mounting plate as shown.

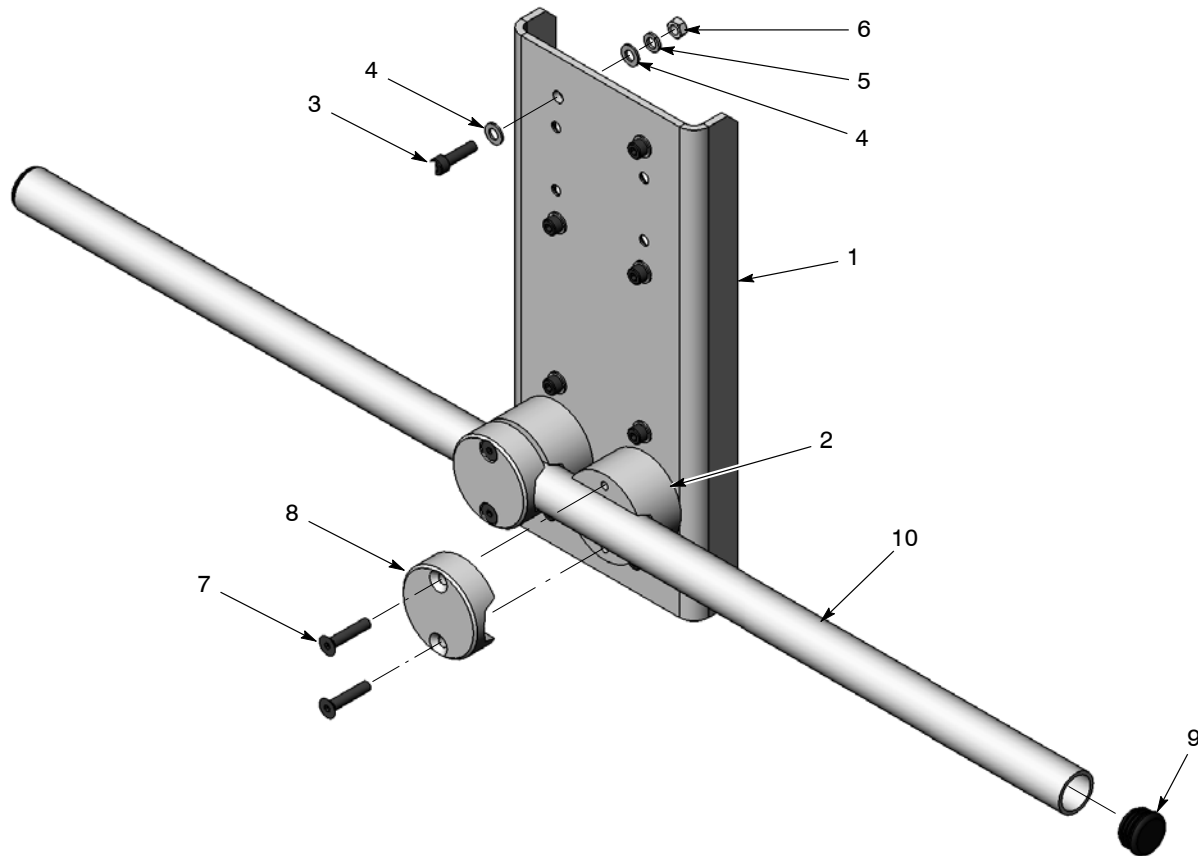


Figure 5 Single Horizontal Bar Gun Support Kit Assembly

- | | | |
|--------------------------|------------------------------------|------------------|
| 1. Mounting plate | 5. M8 lock washers | 8. Clamp caps |
| 2. Clamps | 6. M8 hex nuts | 9. Tube caps |
| 3. M8 x 30 socket screws | 7. M8 x 40 flat-head socket screws | 10. Mounting bar |
| 4. M8 flat washers | | |

Note: The mounting bar (10) must be ordered separately.

Multiple Horizontal Bar Gun Support Kit Assembly

This kit can be assembled as shown or mirrored vertically if desired. It includes fasteners (see Figure 5) to install the mounting plate on the oscillator or reciprocator gun carriage.

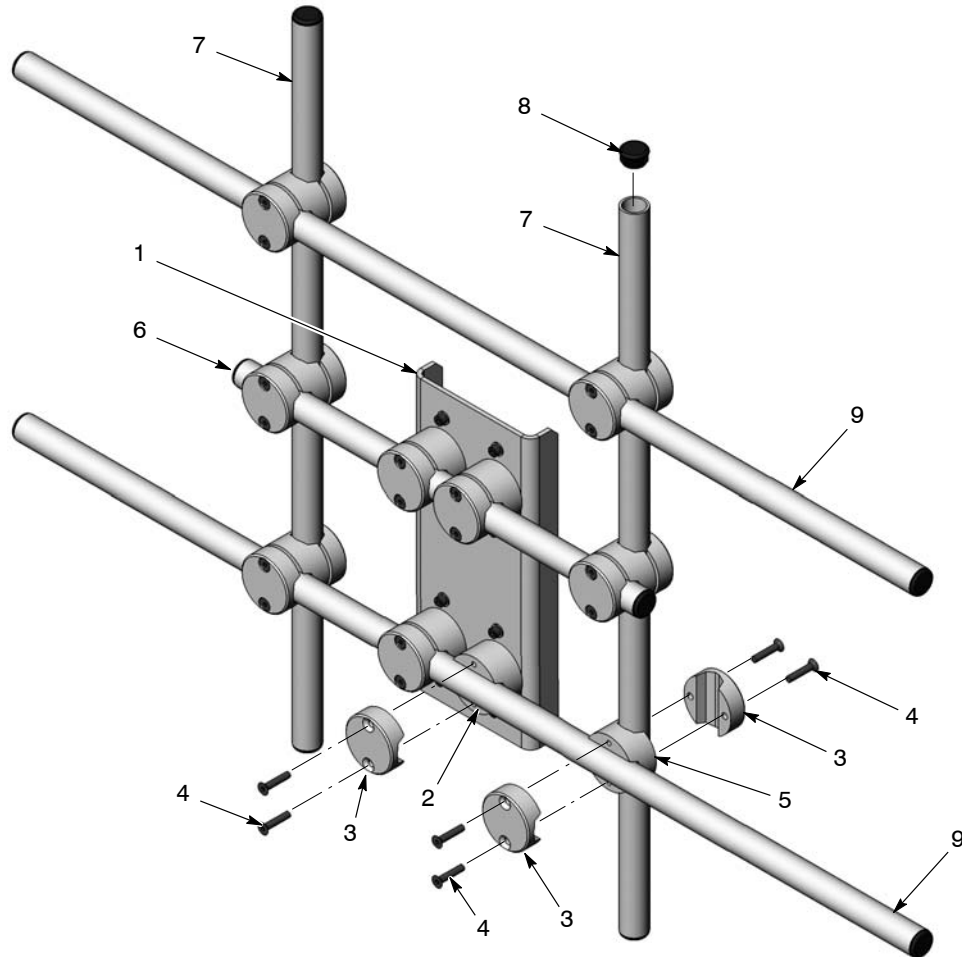


Figure 6 Multiple Horizontal Bar Gun Support Kit Assembly

- | | | |
|--------------------|------------------------------------|-----------------------------|
| 1. Mounting plate | 4. M8 x 40 flat-head socket screws | 7. Tubes, 1 meter (3.28 ft) |
| 2. Mounting clamps | 5. Transition clamp | 8. Tube caps |
| 3. Clamp caps | 6. Tube, 635 mm (2 ft) | 9. Mounting bars |

Note: The mounting bars (9) must be ordered separately.

Vertical Bar Gun Support Kit Assembly

Both single and multiple vertical bar support kits can be assembled as shown or mirrored vertically if desired. The single bar kit accommodates only one mounting bar. The kits include fasteners (see Figure 5) to install the mounting plate on the oscillator or reciprocator gun carriage.

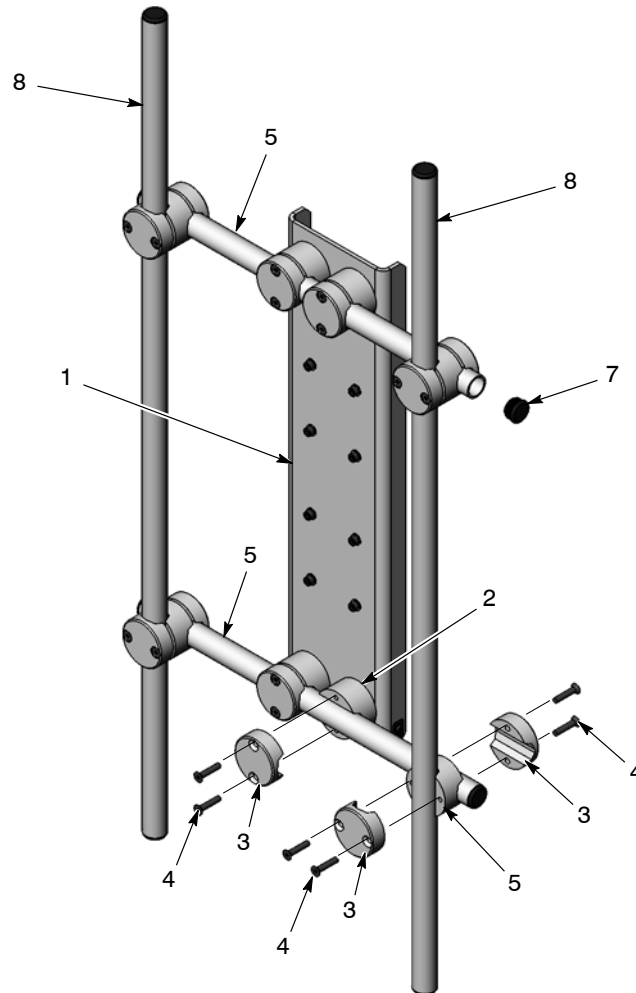


Figure 7 Single and Multiple Vertical Bar Gun Support Assembly

- | | | |
|--------------------|------------------------------------|------------------|
| 1. Mounting plate | 4. M8 x 40 flat-head socket screws | 7. Tube caps |
| 2. Mounting clamps | 5. Transition clamp | 8. Mounting bars |
| 3. Clamp caps | 6. Tubes, 635 mm (2 ft) | |

Note: The mounting bars (8) must be ordered separately.

Grounding



CAUTION: It is very important to provide a complete circuit for the gun current. A break in the circuit conductors (conveyor, booth, braided ground cables, controller) can cause voltage to build up on the conductors up to the maximum output of the spray gun voltage multiplier (up to 100 kV). The voltage will eventually discharge in a high frequency arc and cause damage to the controller electronics (gun driver board and power supply).

See Figure 8. Two ring-tongue terminals and a flat braided ground wire 7.6 meters (25 ft) long are included in every support kit. On each mounting plate are two grounding screws and washers. Use the ground wire to ground the mounting plate to a true earth ground. Typically, this is a ground stud on the in/out positioner or gun stand.

1. Cut the ground wire to the required length, allowing gun maximum gun movement.
2. Crimp the ring-tongue terminals to the ground wire.
3. Connect one end of the ground wire to the mounting plate ground, using the supplied screw and brass washer.
4. Connect the other end of the ground wire to the earth ground and secure the ground wire so that will not be pulled loose or severed by gun and support movement.

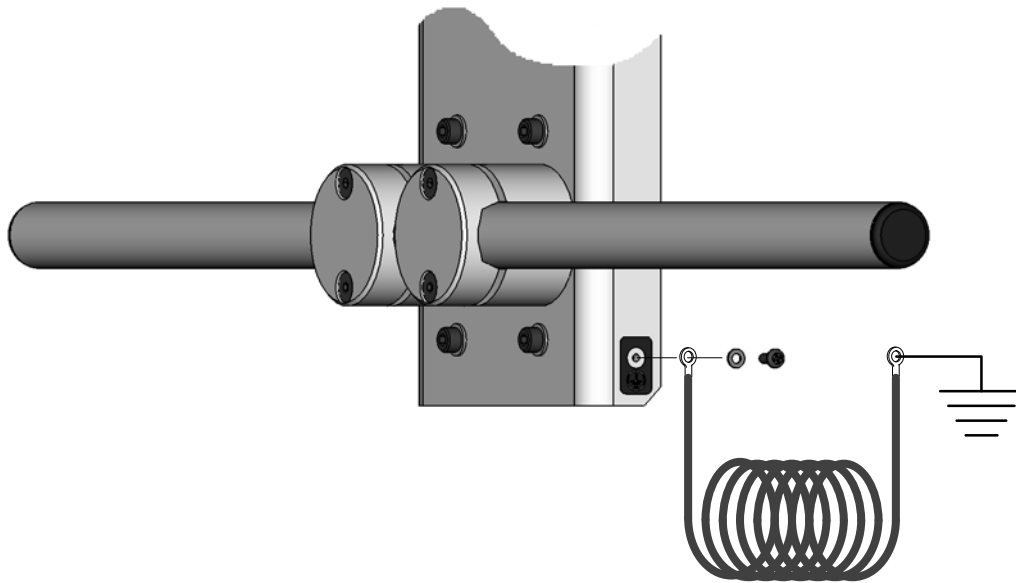


Figure 8 Grounding

Parts Lists

To order parts, call the Nordson Industrial Coating Systems Customer Support Center at (800) 433-9319 or contact your local Nordson representative.

Single Horizontal Bar Gun Support Kit

Mounting bars are listed on page 16. Weights are listed on page 21.

Item	Part	Description	Quantity	Note
–	1103214	KIT, gun support, horizontal bar, single, global	1	
1	-----	• PLATE, mounting, gun bar support, 490 mm	1	
2	1103255	• CLAMP, bar, panel mount, universal	2	
3	1103253	• CAP, clamp, bar, universal	2	
4	982561	• SCREW, flat head, socket, M8 x 20, black	4	
5	1103423	• SCREW, flat head, socket, M8 x 40, black	4	
6	1103273	• CAP, tube, 34 mm O.D., 30 mm I.D. black	2	
7	240674	• TAG, ground	2	
8	983021	• WASHER, flat, 0.203 x 0.406 x 0.040 in. brass	2	
9	1045837	• SCREW, pan head, recessed, M5 x 12, w/integral lockwasher, black zinc	2	
10	982036	• SCREW, socket, M8 x 30, black	8	
11	983013	• WASHER, flat, regular, M8, steel, zinc	16	
12	983404	• WASHER, lock, split, M8, steel, zinc	8	
13	984707	• NUT, hex, M8, steel, zinc	8	
NS	-----	• WIRE, braided, flat, flexible	25 ft	
NS	-----	• TERMINAL, ring tongue, non, 12–10, 10	2	

NS: Not Shown

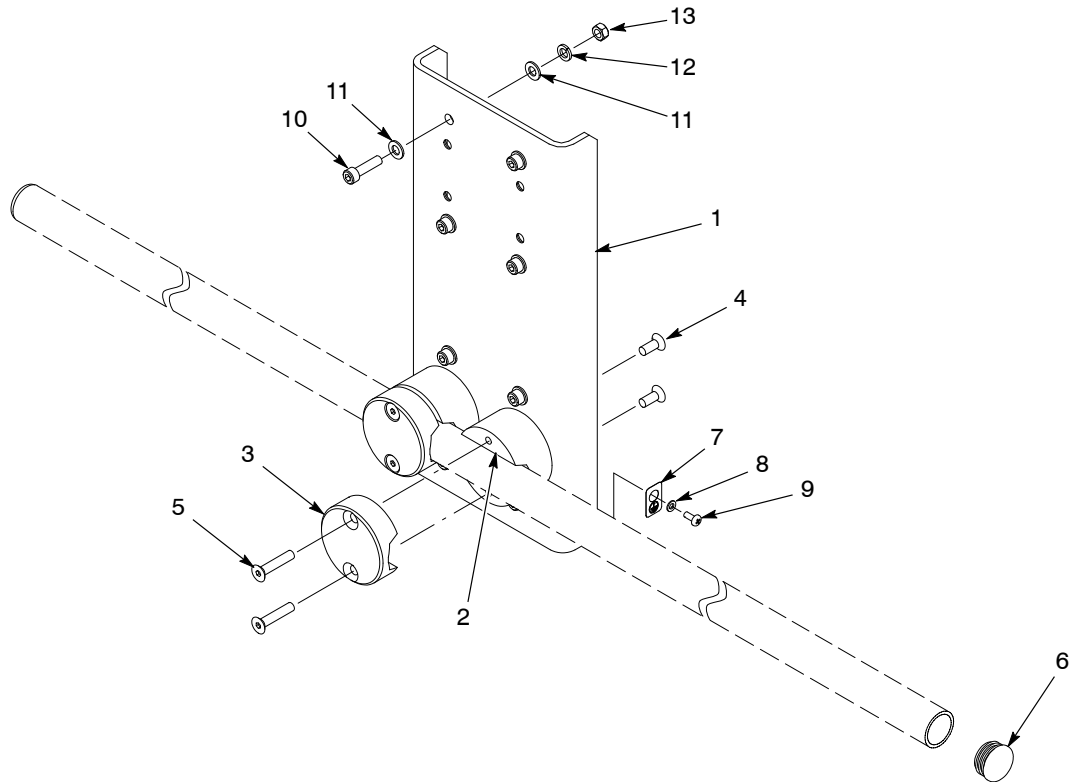


Figure 9 Single Horizontal Bar Gun Support Kit

Multiple Horizontal Bar Gun Support Kit

See Figure 10. Mounting bars are listed on page 16. Weights are listed on page 21.

Item	Part	Description	Quantity	Note
–	1103215	KIT, gun support, horizontal bar, multiple, global	1	
1	– – – – –	• PLATE, mounting, gun bar support, 490 mm	1	
2	1103255	• CLAMP, bar, panel mount, universal	4	
3	1103253	• CAP, clamp, bar, universal	16	A
4	982561	• SCREW, flat head, socket, M8 x 20, black	8	
5	1103423	• SCREW, flat head, socket, M8 x 40, black	32	A
6	1103273	• CAP, tube, 34 mm O.D., 30 mm I.D. black	10	
7	240674	• TAG, ground	2	
8	983021	• WASHER, flat, 0.203 x 0.406 x 0.040 in. brass	2	
9	1045837	• SCREW, pan head, recessed, M5 x 12, w/integral lockwasher, black zinc	2	
10	982036	• SCREW, socket, M8 x 30, black	8	
11	983013	• WASHER, flat, regular, M8, steel, zinc	16	
12	983404	• WASHER, lock, split, M8, steel, zinc	8	
13	984707	• NUT, hex, M8, steel, zinc	8	
14	1103254	• CLAMP, bar, transition, universal	6	A
15	1103258	• TUBE, gun support, 35 mm/1.375 in. OD x 635 mm long	1	
16	1103259	• TUBE, gun support, 35 mm/1.375 in. OD x 1 meter long	2	
NS	– – – – –	• WIRE, braided, flat, flexible	25 ft	
NS	– – – – –	• TERMINAL, ring tongue, non, 12–10, 10	2	
NOTE A: These parts also available in 1107367 Kit, Transition Clamp Assembly. Kit consists of 1 transition clamp, 2 caps, and 4 screws.				
NS: Not Shown				

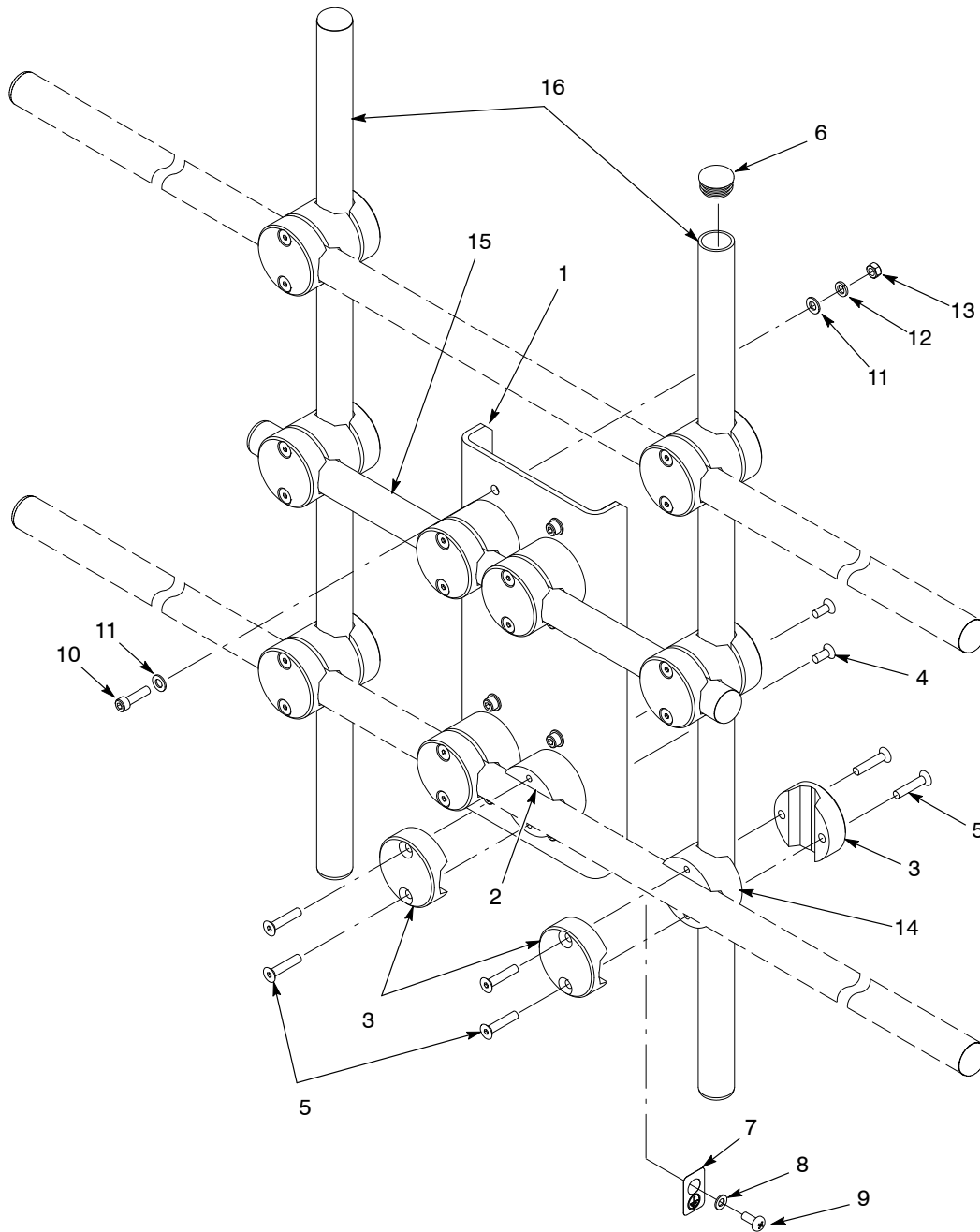


Figure 10 Multiple Horizontal Gun Support Kit

Single Vertical Bar Gun Support Kit

See Figure 11. Mounting bars are listed on page 16. Weights are listed on page 21.

Item	Part	Description	Quantity	Note
–	1103216	KIT, gun support, vertical bar, single, global	1	
1	– – – – –	• PLATE, mounting, gun bar support, 800 mm	1	
2	1103255	• CLAMP, bar, panel mount, universal	4	
3	1103253	• CAP, clamp, bar, universal	8	A
4	982561	• SCREW, flat head, socket, M8 x 20, black	8	
5	1103423	• SCREW, flat head, socket, M8 x 40, black	16	A
6	1103273	• CAP, tube, 34 mm O.D., 30 mm I.D. black	6	
7	240674	• TAG, ground	2	
8	983021	• WASHER, flat, 0.203 x 0.406 x 0.040 in. brass	2	
9	1045837	• SCREW, pan head, recessed, M5 x 12, w/integral lockwasher, black zinc	2	
10	982036	• SCREW, socket, M8 x 30, black	8	
11	983013	• WASHER, flat, regular, M8, steel, zinc	16	
12	983404	• WASHER, lock, split, M8, steel, zinc	8	
13	984707	• NUT, hex, M8, steel, zinc	8	
14	1103254	• CLAMP, bar, transition, universal	2	A
15	1103258	• TUBE, gun support, 35 mm/1.375 in. OD x 635 mm long	2	
NS	– – – – –	• WIRE, braided, flat, flexible	25 ft	
NS	– – – – –	• TERMINAL, ring tongue, non, 12–10, 10	2	
NOTE A: These parts also available in 1107367 Kit, Transition Clamp Assembly. Kit consists of 1 transition clamp, 2 caps, and 4 screws.				
NS: Not Shown				

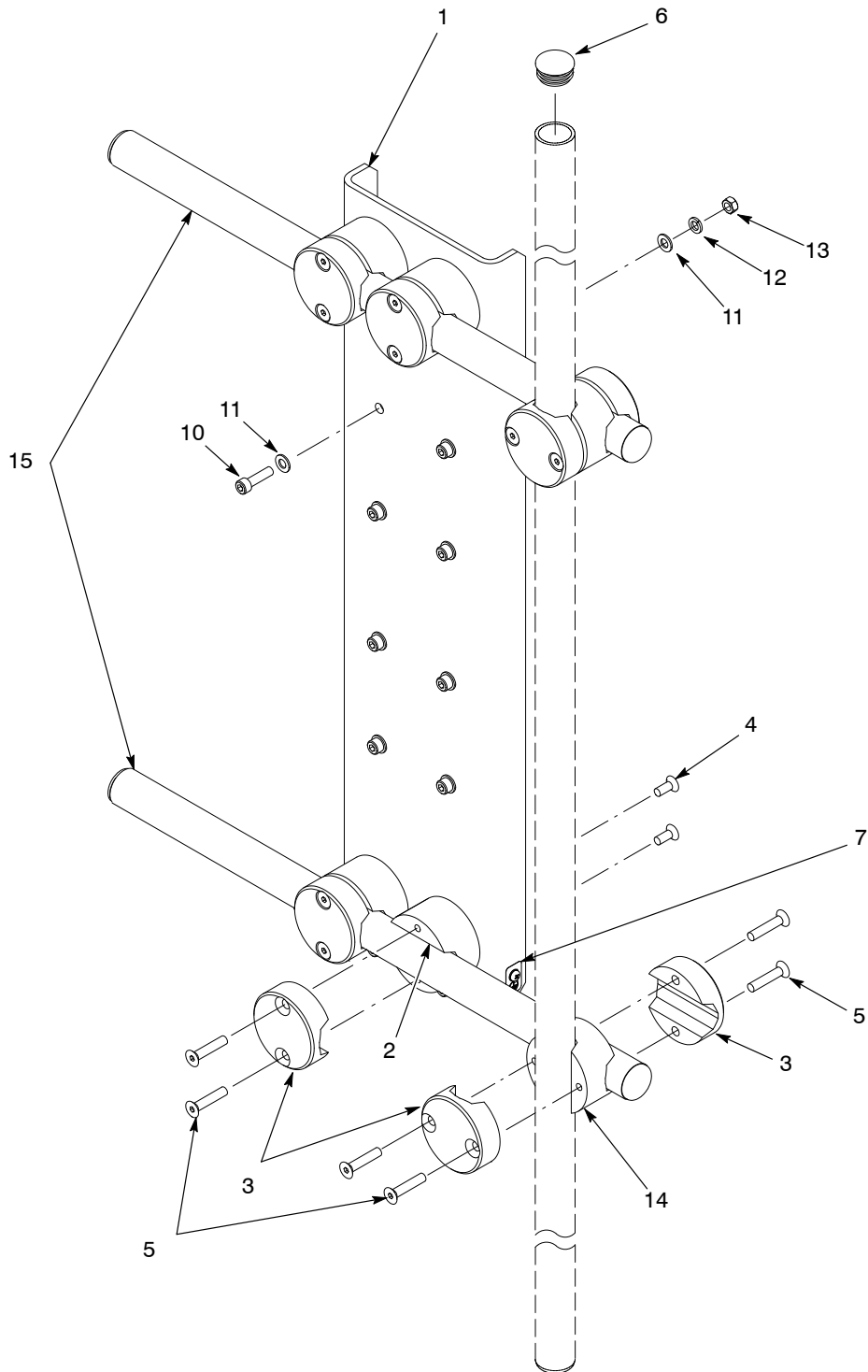


Figure 11 Single Vertical Gun Support Kit

Multiple Vertical Bar Gun Support Kit

See Figure 12. Mounting bars are listed on page 16. Weights are listed on page 21.

Item	Part	Description	Quantity	Note
–	1103217	KIT, gun support, vertical bar, multiple, global	1	
1	– – – – –	• PLATE, mounting, gun bar support, 800 mm	1	
2	1103255	• CLAMP, bar, panel mount, universal	4	
3	1103253	• CAP, clamp, bar, universal	12	A
4	982561	• SCREW, flat head, socket, M8 x 20, black	8	
5	1103423	• SCREW, flat head, socket, M8 x 40, black	24	A
6	1103273	• CAP, tube, 34 mm O.D., 30 mm I.D. black	8	
7	240674	• TAG, ground	2	
8	983021	• WASHER, flat, 0.203 x 0.406 x 0.040 in. brass	2	
9	1045837	• SCREW, pan head, recessed, M5 x 12, w/integral lockwasher, black zinc	2	
10	982036	• SCREW, socket, M8 x 30, black	8	
11	983013	• WASHER, flat, regular, M8, steel, zinc	16	
12	983404	• WASHER, lock, split, M8, steel, zinc	8	
13	984707	• NUT, hex, M8, steel, zinc	8	
14	1103254	• CLAMP, bar, transition, universal	4	A
15	1103258	• TUBE, gun support, 35 mm/1.375 in. OD x 635 mm long	2	
NS	– – – – –	• WIRE, braided, flat, flexible	25 ft	
NS	– – – – –	• TERMINAL, ring tongue, non, 12–10, 10	2	
NOTE A: These parts are also available in 1107367 Kit, Transition Clamp Assembly. Kit consists of 1 transition clamp, 2 caps, and 4 screws.				
NS: Not Shown				

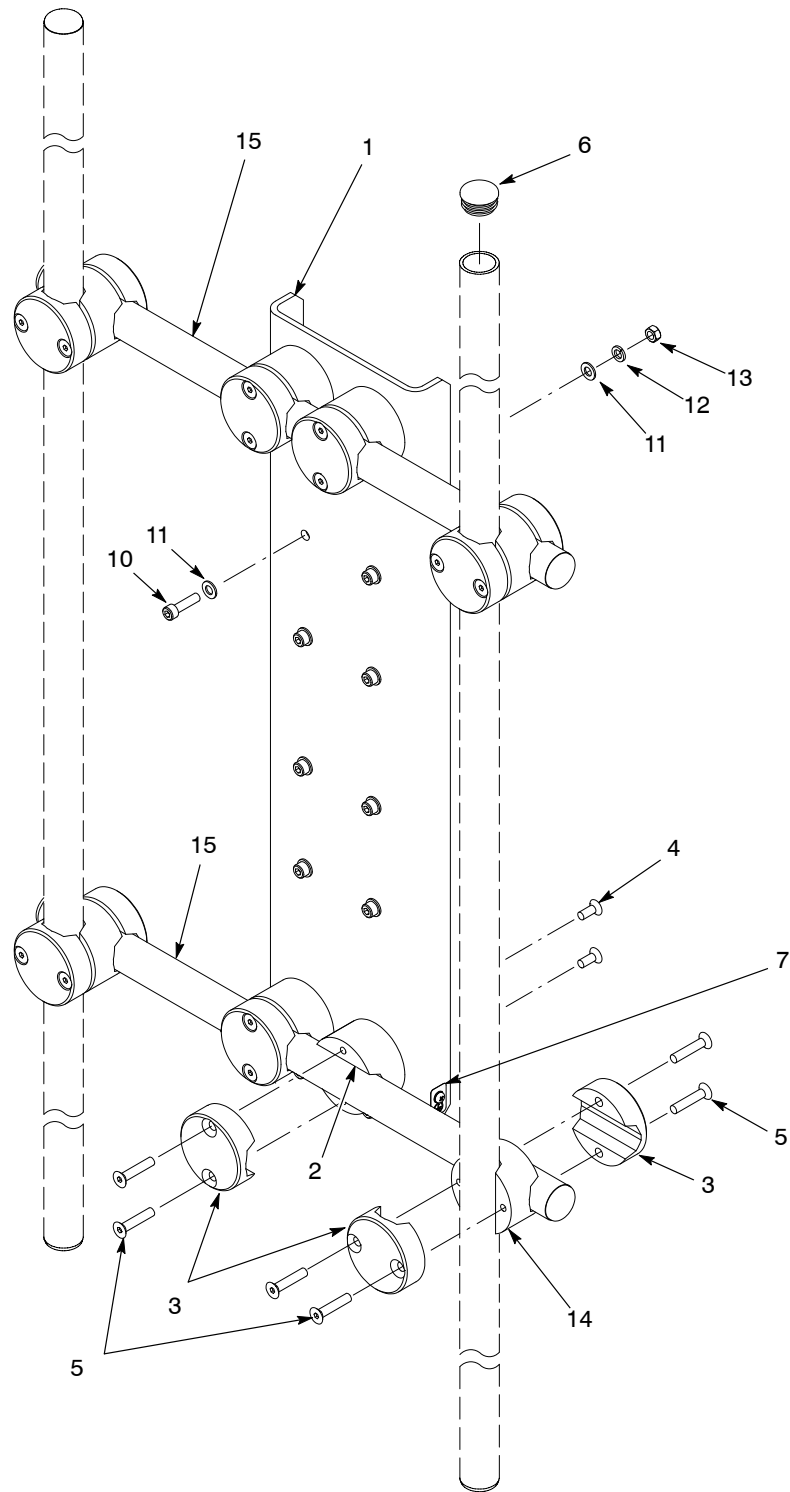


Figure 12 Multiple Vertical Bar Gun Support Kit

Mounting Bars

Mounting bars are not included in gun support kits. Order the number and size of mounting bars required for your application. Weights are listed on page 21.

Part	Description	Note
1103259	TUBE, gun support, 35 mm/1.375 in. O.D. x 1 meter long	
1103260	TUBE, gun support, 35 mm/1.375 in. O.D. x 2 meter long	
1104084	TUBE, gun support, 35 mm/1.375 in. O.D. x 3 meter long	

Gun Mounts

Vertical Bar Gun Mount for Sure Coat/Encore Tube-Mount Guns

See Figure 13. Weights are listed on page 21.

Item	Part	Description	Quantity	Note
–	1103218	GUN MOUNT, Sure Coat/Encore auto, vertical, universal	1	
1	1010780	• MOUNT, sleeve, auto gun	1	
2	981561	• SCREW, socket, 3/8–16 x 1.00, zinc	3	
3	1103250	• MOUNT, Sure Coat/Encore auto gun, vertical, universal	1	
4	1103253	• CAP, clamp, bar, universal	1	
5	1103423	• SCREW, flat head, socket, M8 x 40 black	2	

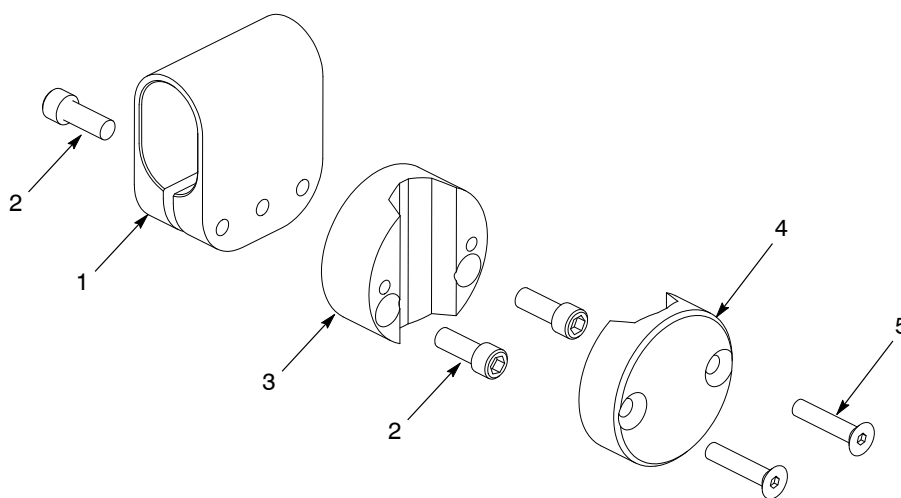


Figure 13 Vertical Bar Gun Mount for Sure Coat/Encore Tube-Mount Guns

Horizontal Bar Gun Mount for Sure Coat/Encore Tube-Mount Guns

See Figure 14. Weights are listed on page 21.

Item	Part	Description	Quantity	Note
–	1103219	GUN MOUNT, Sure Coat/Encore auto, horizontal, universal	1	
1	1010780	• MOUNT, sleeve, auto gun	1	
2	981561	• SCREW, socket, 3/8–16 x 1.00, zinc	3	
3	1103249	• MOUNT, Sure Coat/Encore auto gun, horizontal, universal	1	
4	1103253	• CAP, clamp, bar, universal	1	
5	1103423	• SCREW, flat head, socket, M8 x 40 black	2	

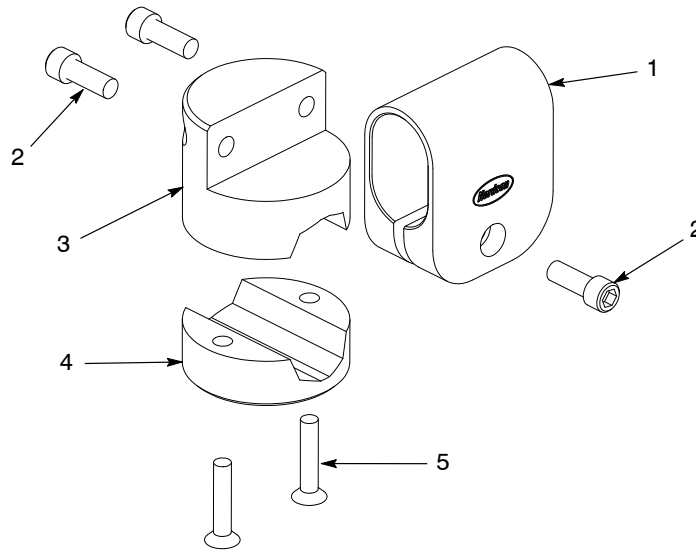


Figure 14 Horizontal Bar Gun Mount for Sure Coat/Encore Tube-Mount Guns

Horizontal Bar Gun Mount for Prodigy Tube-Mount Guns

See Figure 15. Weights are listed on page 21.

Item	Part	Description	Quantity	Note
–	1103230	GUN MOUNT, Prodigy auto, horizontal, universal	1	
1	1103251	• MOUNT, Prodigy, auto gun, horizontal, universal	1	
2	1101517	• JAW ASSEMBLY, fixed, clamp w/ground, Prodigy auto	1	
3	1054472	• JAW, floating clamp, Prodigy auto	1	
4	249074	• HANDLE, adjustable, 3/8–16 x 2.75 in.	1	
5	1103253	• CAP, clamp, bar, universal	1	
6	1103423	• SCREW, flat head, socket, M8 x 40, black	2	
7	982160	• SCREW, socket, M8 x 25, zinc	2	
8	983404	• WASHER, lock, split, M8, steel, zinc	2	
9	983061	• WASHER, flat, 0.406 x 0.812 x 0.065 in, zinc	1	

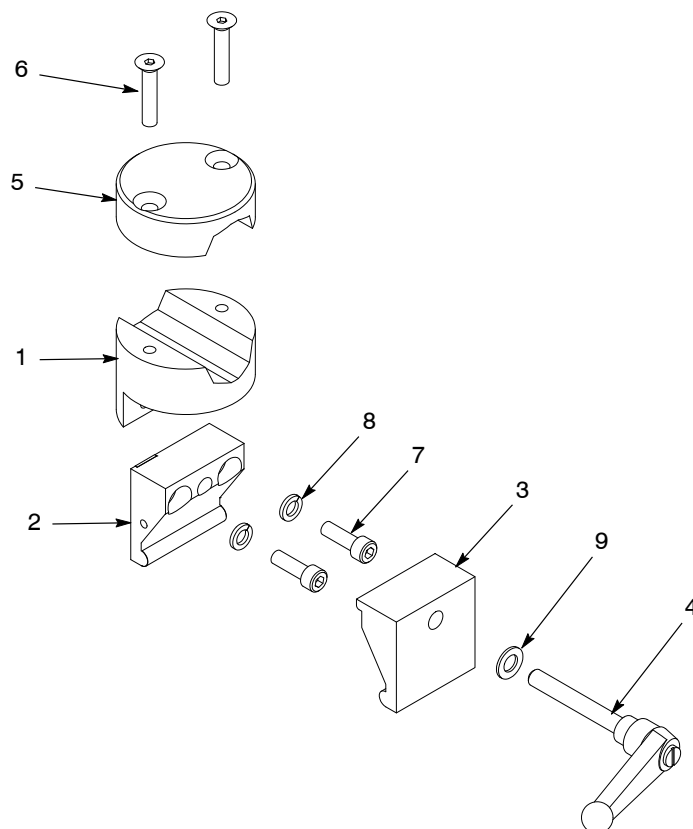


Figure 15 Horizontal Bar Gun Mount for Sure Prodigy Tube-Mount Guns

Vertical Bar Gun Mount for Prodigy Tube-Mount Guns

See Figure 16. Weights are listed on page 21.

Item	Part	Description	Quantity	Note
–	1103231	GUN MOUNT, Prodigy auto, vertical, universal	1	
1	1103252	• MOUNT, Prodigy, auto gun, vertical, universal	1	
2	1101517	• JAW ASSEMBLY, fixed, clamp w/ground, Prodigy auto	1	
3	1054472	• JAW, floating clamp, Prodigy auto	1	
4	249074	• HANDLE, adjustable, 3/8–16 x 2.75 in.	1	
5	1103253	• CAP, clamp, bar, universal	1	
6	1103423	• SCREW, flat head, socket, M8 x 40, black	2	
7	982160	• SCREW, socket, M8 x 25, zinc	2	
8	983404	• WASHER, lock, split, M8, steel, zinc	2	
9	983061	• WASHER, flat, 0.406 x 0.812 x 0.065 in, zinc	1	

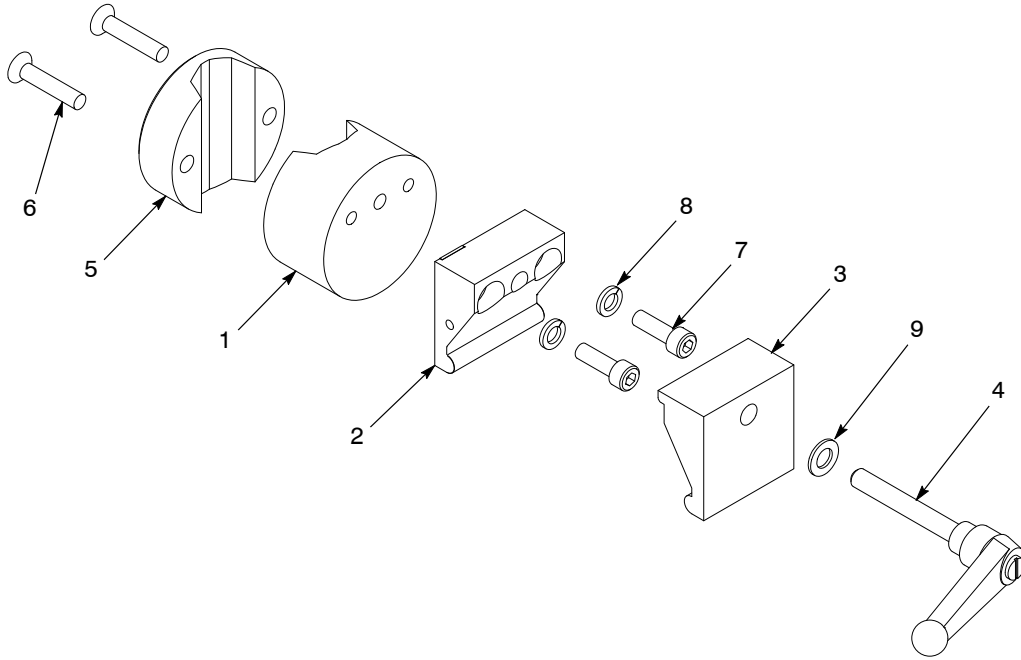


Figure 16 Vertical Bar Gun Mount for Prodigy Tube-Mount Guns

Universal Bar Mount Kit

See Figure 17. Weights are listed on page 21.

Item	Part	Description	Quantity	Note
–	1104067	KIT, universal, mount bar, auto, 4 ft.	1	
1	1103254	• CLAMP, bar, transition, universal	1	
2	1103253	• CAP, clamp, bar, universal	2	
3	1103423	• SCREW, flat head, socket, M8 x 40, black	4	
4	327704	• ROD, adjusting, aluminum, 1.25 O.D. x 4 ft.	1	
5	602211	• CAP/PLUG, long, 1.25 in. I.D.	1	

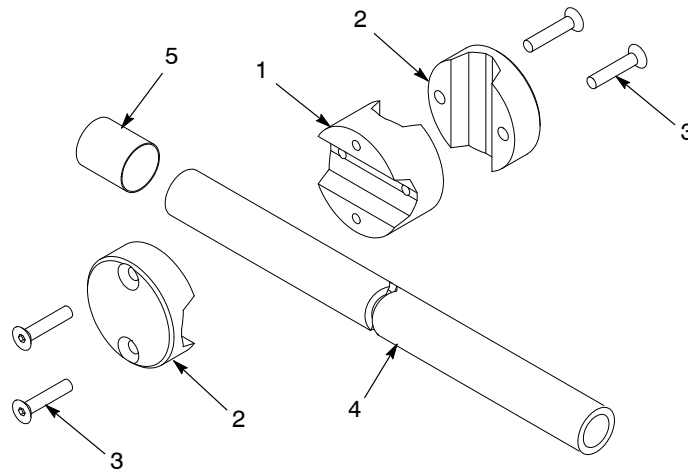


Figure 17 Universal Bar Mount Kit for Bar-Mount Guns

Adapter Kit for Versa-Spray Guns

Item	Part	Description	Quantity	Note
–	1104527	KIT, adapter, 0.625 in. bar gun to 1.25 in. diameter bar	1	
1	1103239	• ADAPTER, 0.6254 in. diameter bar gun to 1.25 in. diameter bar	1	
2	1097545	• BALL, chrome steel, 6.5 mm diameter, 25, C63	1	
3	345385	• SCREW, set, flat, M8 x 20, black	1	

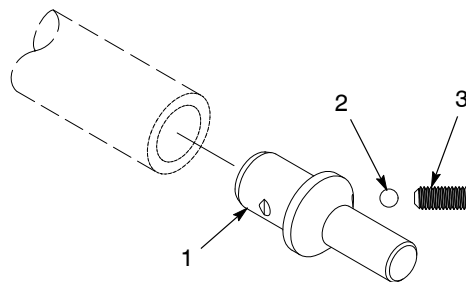


Figure 18 Adapter Kit for Versa-Spray Guns

Weights

Mounting Kits and Bars

Use these charts to calculate the weight of your gun support assembly and guns. Do not exceed the maximum load capacity of the gun mover. Note that the hoses, cables, and tubing will add additional weight.

Part No.	Description	Kg	Lbs
1103214	Kit, single horizontal bar, gun support	3	6.6
1103215	Kit, multiple horizontal bar, gun support	10.7	23.6
1103216	Kit, single vertical bar, gun support	8.2	18.1
1103217	Kit, multiple vertical bar, gun support	9.66	21.3
1103218	Sure Coat/Encore vertical bar gun mount	0.86	1.91
1103219	Sure Coat/Encore horizontal bar gun mount	1.05	2.33
1103230	Prodigy horizontal bar gun mount	1	2.2
1103231	Prodigy vertical bar gun mount	0.95	2.1
1104067	Universal bar mount kit	2.04	4.5
1104527	Versa-Spray adapter kit	0.068	0.15
1103258	Tube, 635 mm long, 35 mm/1.375 in. O.D.	0.52	1.15
1103259	Tube, 1 meter long, 35 mm/1.375 in. O.D.	0.83	1.82
1103260	Tube, 2 meters long, 35 mm/1.375 in. O.D.	1.65	3.65
1104084	Tube, 3 meters long, 35 mm/1.375 in. O.D.	2.45	5.4
–	Panel Mount Clamp Assembly, consisting of: 1103423 Screws (2), 982561 Screws (2), 1103255 Panel Mount Clamp (1), 1103253 Clamp Cap (1)	0.59	1.3
–	Transition Clamp Assembly, consisting of: 1103243 Screws (4), 1103254 Transition Clamp (1), 1103253 Clamp Caps (2)	0.72	1.6

Guns

Guns	kg	Lbs
Versa-Spray II Bar Mount – Old	0.67	1.48
Versa-Spray II Bar Mount – New	0.48	1.07
Sure Coat Tube-Mount – 6 ft (with hose hanger)	3.00	6.5
Sure Coat Tube-Mount – 5 ft (with hose hanger)	2.30	5.25
Sure Coat Tube-Mount – 4 ft (with hose hanger)	2.00	4.5
Sure Coat Bar Mount	0.89	1.96
Prodigy Tube-Mount Gun	1.34	2.96
Prodigy Bar-Mount Gun	0.91	2.0
Encore Tube-Mount Gun – 5 ft	2.02	4.45
Encore Bar-Mount Gun	0.65	1.44

Dimensions

Single Horizontal and Vertical Gun Supports

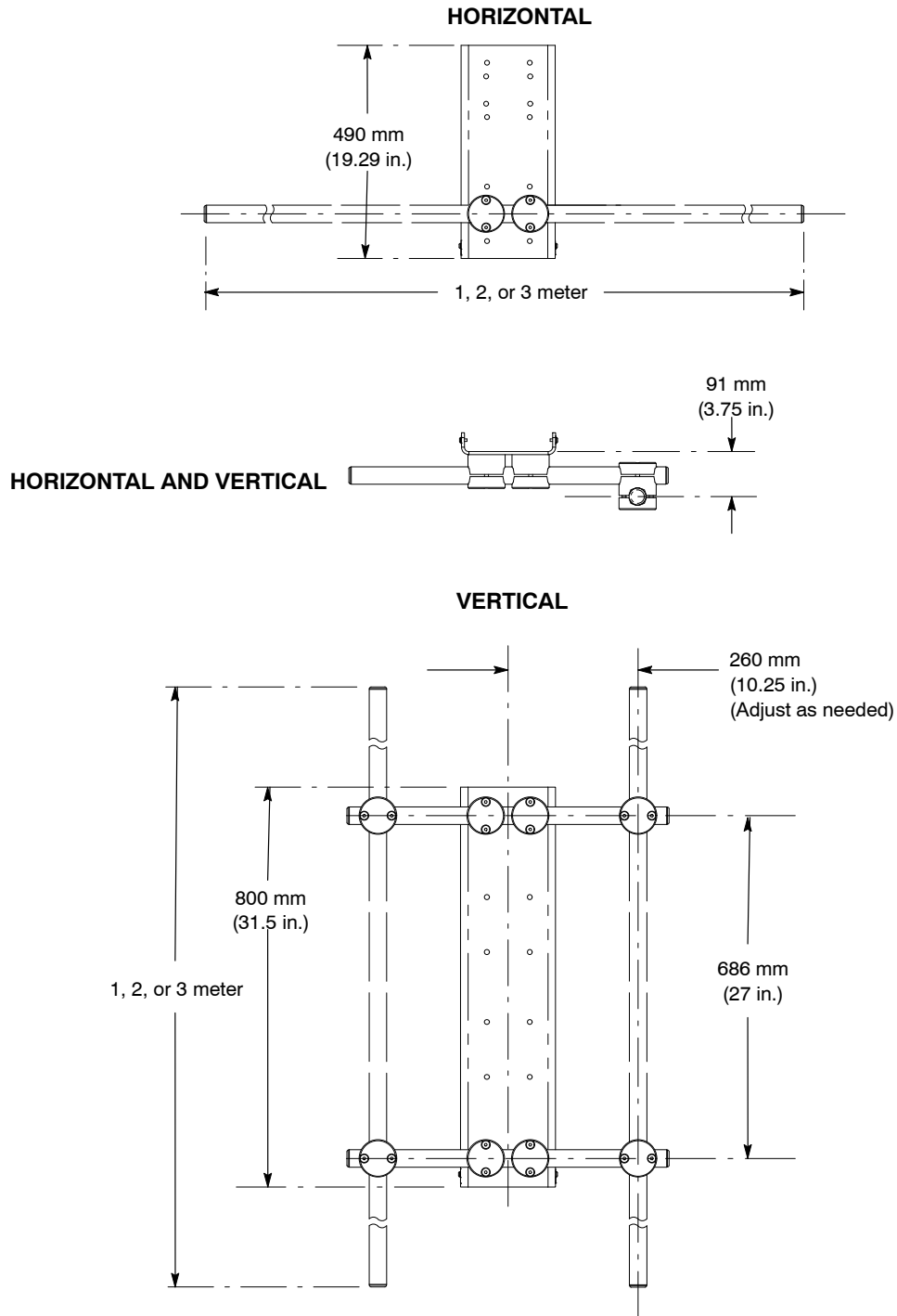


Figure 19 Single Horizontal and Vertical Gun Support Dimensions

Multiple Horizontal and Vertical Gun Supports

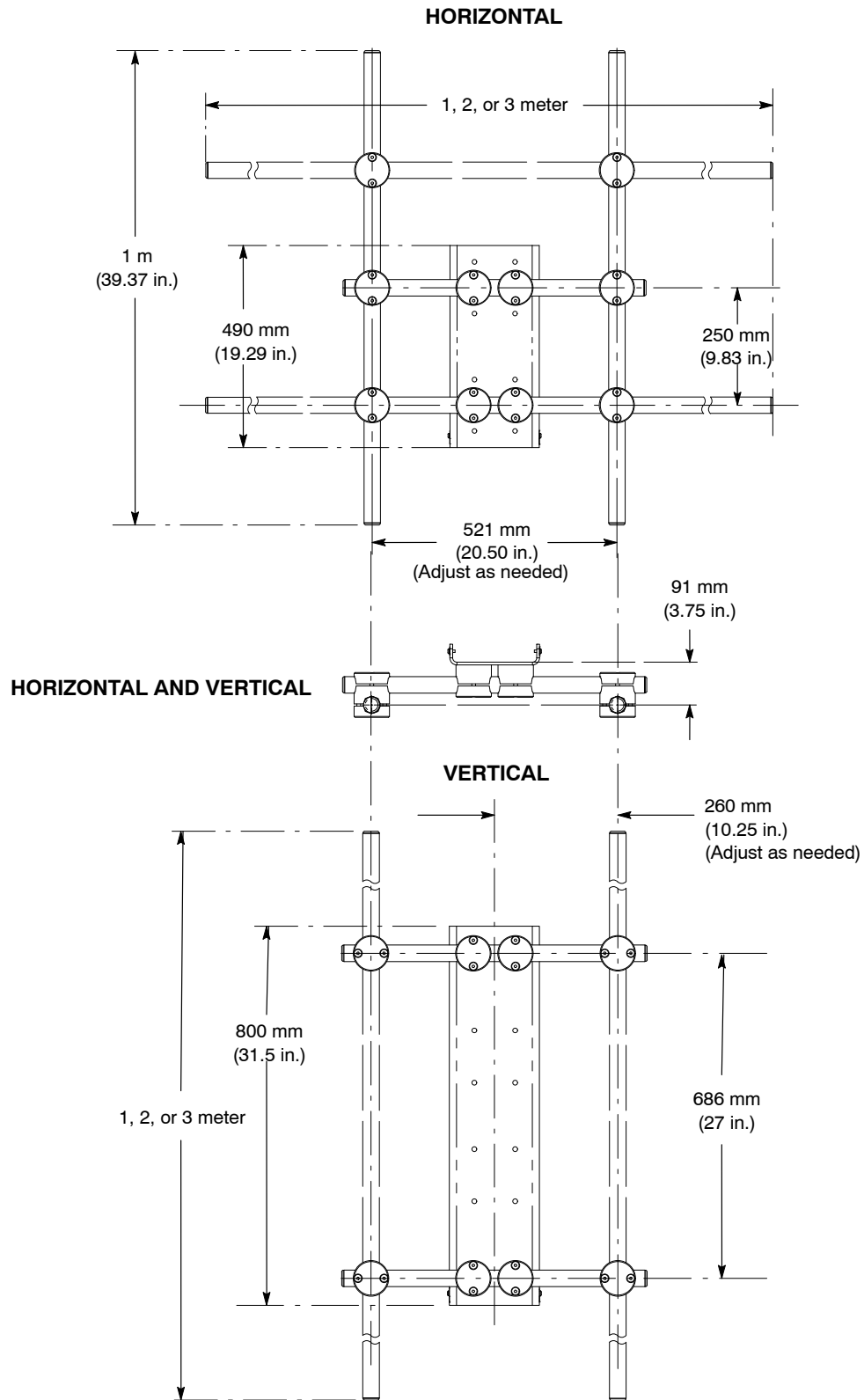


Figure 20 Multiple Horizontal and Vertical Gun Support Dimensions

Issued 1/11

Original copyright date 2011. Encore, Prodigy, Sure Coat, Versa-Spray, Nordson, and the Nordson logo are registered trademarks of Nordson Corporation.