

Prodigy[®]/Sure Coat[®] Nozzle Extension



WARNING: Allow only qualified personnel to perform the following tasks. Follow the safety instructions in this document and all other related documentation.

Introduction

The Prodigy/Sure Coat Nozzle Extension Kit allows you to use Sure Coat 2.5, 3, and 4-mm flat spray and angled nozzles on Prodigy automatic spray guns. The kit includes a Sure Coat 4-mm flat spray nozzle. Refer to the Sure Coat automatic spray gun manual for other nozzles.

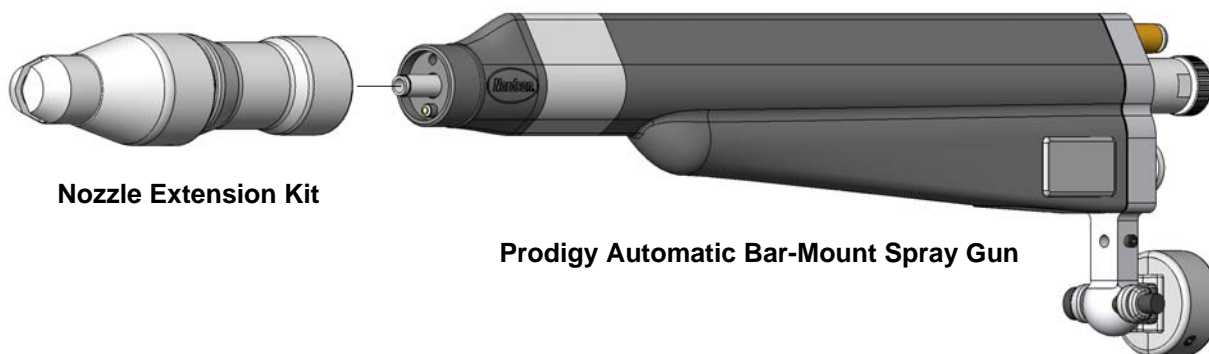


Figure 1 Nozzle Extension Kit

Installation

See Figure 2.

1. Remove the existing nozzle nut and nozzle from the Prodigy automatic gun.
2. Install the nozzle extension on the spray gun, making sure the powder tube slides into the insert (4). Screw the extension assembly onto the gun until it bottoms out.
3. If necessary, loosen the set screw (13) and the nozzle nut (11) and orient the nozzle (12) as desired for the application.

Cleaning and Repair

Removal and Disassembly

Refer to *Parts* for replacement part numbers.

1. Purge the gun to blow out any remaining powder.
2. Unscrew the adapter assembly (7) from the spray gun.
3. Unscrew the set screw (13).
4. Unscrew the nozzle nut (11) and remove the nozzle (12).
5. Pull the electrode support (8A) out of the adapter sleeve.
6. Push the electrode ring (1), insert (4), and cone (6) out the the extension body.
7. Blow off the electrode support. Unscrew the electrode holder (10) if replacing the electrode (9).
8. Blow off all parts and inspect for wear or damage. If removing impact fusion do not scratch powder contact surfaces.
9. Inspect the O-rings and replace any that are damaged or twisted.

NOTE: The adapter assembly (7) cannot be taken apart without irreparable damage. Only the electrode (7A) can be replaced. To replace the adapter assembly order the adapter kit listed in the parts list.

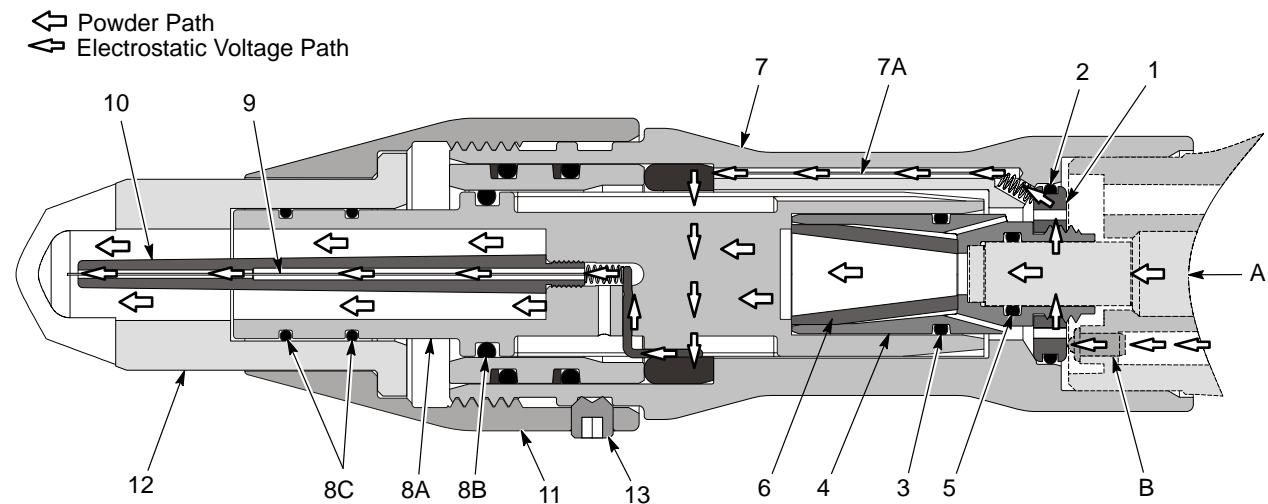


Figure 2 Nozzle Extension (Prodigy Automatic Bar-Mount Gun Shown)

- | | | |
|--------------------------|-----------------------|----------------------|
| A. Spray gun powder tube | 5. O-ring | 8C. O-rings |
| B. Spray gun contact | 6. Cone filter | 9. Electrode |
| 1. Electrode ring | 7. Adapter assembly | 10. Electrode holder |
| 2. O-ring | 7A. Electrode | 11. Nozzle nut |
| 3. O-ring | 8A. Electrode support | 12. Nozzle |
| 4. Insert | 8B. O-ring | 13. Set screw |

Assembly and Installation

1. See Figures 2 or 4. Install the O-ring (2) on the electrode ring (1).
2. Install the O-rings (3, 5) in and on the insert (4).
3. See Figure 3. If removed, install the electrode (7A) into the adapter assembly (7).
4. Install the filter cone (6) into the insert (4).
5. Thread the electrode ring (1) onto the insert.
6. Screw the nozzle tool (A) shipped with the spray gun onto the threads of the insert projecting from the electrode ring. Slide the insert assembly into the adapter, then twist and press on the nozzle tool to seat the electrode ring firmly into the adapter.

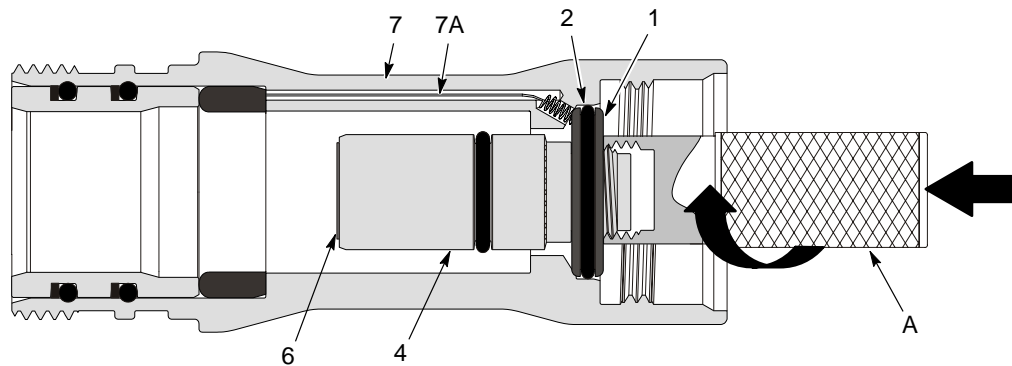


Figure 3 Installing the Cone/Insert/Electrode Ring Assembly into the Adapter Sleeve.

- | | | |
|-------------------|---------------------|----------------|
| 1. Electrode ring | 6. Filter cone | 7A. Electrode |
| 2. O-ring | 7. Adapter assembly | A. Nozzle tool |
| 4. Insert | | |

7. See Figures 2 or 4. Install the electrode (9) into the electrode holder (10).
8. Thread the electrode holder into the electrode support (8A).
9. Slide the electrode support into the adapter sleeve and over the end of the insert.
10. Blow off the front end of the spray gun, powder tube (A), and contact (B).
11. Screw the extension assembly onto the end of the gun, making sure the powder tube slides into the insert.
12. Install the nozzle (11) onto the electrode support, orienting the nozzle as desired. There will be a gap between the nozzle flange and the adapter sleeve.
13. Slide the nozzle nut (12) over the nozzle (11), then thread the nut onto the adapter sleeve until tight. Do not overtighten the nut.
14. Install the set screw (13) into the nozzle nut and tighten securely. Do not overtighten the set screw or you will strip the plastic threads.

Parts

To order parts, call the Nordson Finishing Customer Support Center at (800) 433-9319 or contact your local Nordson representative.

See Figure 4.

Item	Part	Description	Quantity	Note
-	1097283	KIT, nozzle extension assembly, Prodigy/Sure Coat	1	
1	1047537	• ELECTRODE ring	1	
2	940203	• O-RING, silicone, 0.875 x 1.00 x 0.063 in.	1	
3	940156	• O-RING, silicone, 0.563 x 0.688 x 0.063 in.	1	
4	1097215	• INSERT, filter, Prodigy/Sure Coat	1	
5	940126	• O-RING, silicone, 0.375 x 0.50 x 0.063 in.	1	
6	1073624	• CONE, porous, nozzle, flat spray	1	
7	1097278	• KIT, adapter assembly, Prodigy/Sure Coat nozzle extension	1	
7A	1097214	• • ELECTRODE, spring, Prodigy/Sure Coat extension	1	
8	1097281	• KIT, electrode support, Prodigy/Sure Coat nozzle extension	1	
8A	- - - - -	• • SUPPORT, electrode, 13 mm, heavy duty	1	
8B	941162	• • O-RING, silicone, 0.750 x 0.937 x 0.094 in.	1	
8C	940163	• • O-RING, silicone, 0.625 x 0.75 x 0.063 in.	2	
9	1010562	• ELECTRODE, spring contact, 0.094 dia.	1	
10	1010561	• HOLDER, electrode, M4	1	
11	1010661	• NOZZLE, flat spray, 13 mm ID, 4 mm slot	1	
12	1097230	• NUT, nozzle, Prodigy/Sure Coat nozzle extension	1	
13	982539	• SCREW, set, slotted, M6 x 6, nylon, black	1	

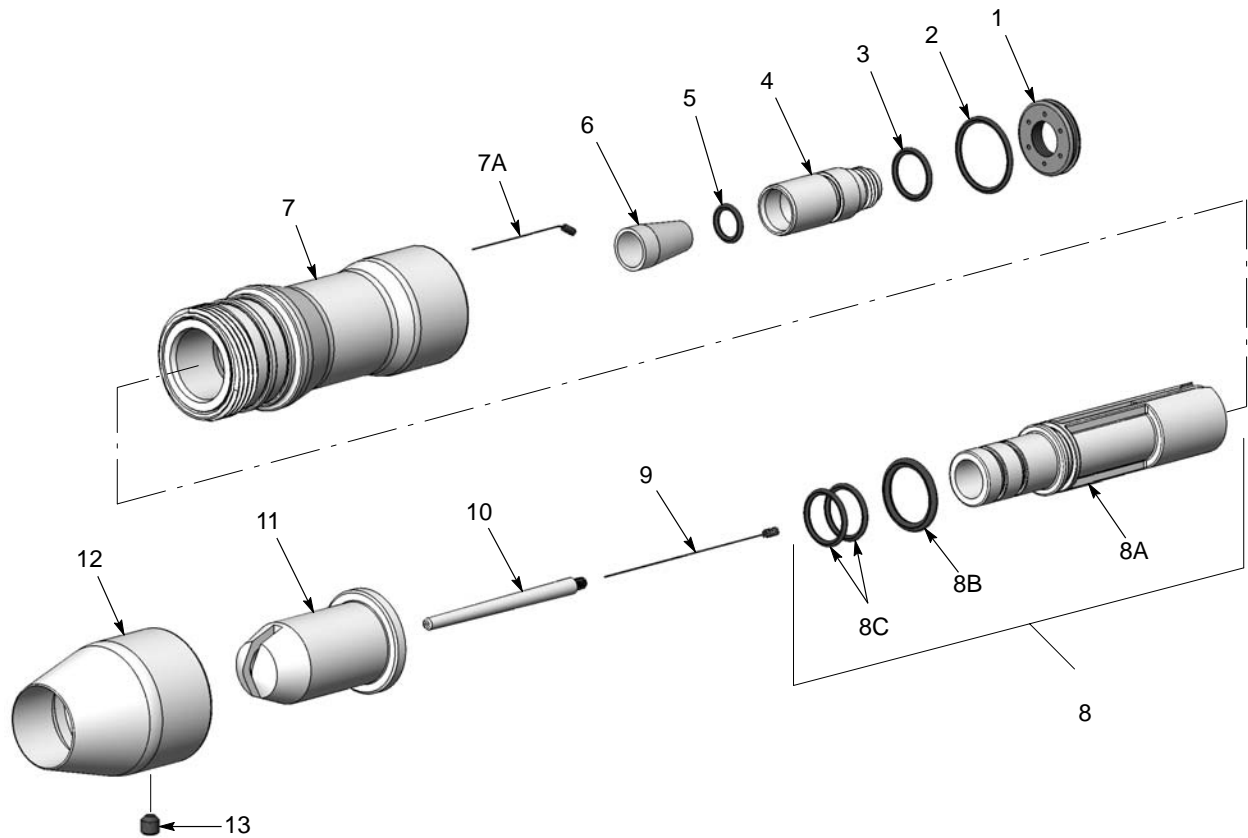


Figure 4 Nozzle Extension Parts

Issued 1/2010

Original copyright date 2009. Prodigy, Sure Coat, Nordson, and the Nordson logo are registered trademarks of Nordson Corporation.