

Dual Gauge/Regulator Module

1. Description



WARNING: Review the safety instructions in your gun, power supply, or booth manuals before installing or operating your system. Familiarity with the safety instructions for electrostatic powder spray systems is essential for your safety.



WARNING: All conductive equipment in the spray area must be connected to a true earth ground. Ungrounded or poorly grounded equipment in a powder spray area can become electrically charged. This charge can deliver a severe shock or create sparks hot enough to cause a fire or explosion.

See Figure 1. This instruction sheet covers the dual gauge/regulator pneumatic control module. It is used with some Nordson powder coating systems and older mobile powder systems equipped with pneumatically powered vibratory box feeders.

On mobile systems, one regulator can be used to control air pressure to the vibrator motor; the other can be used to operate a powder transfer pump.

Air input is $\frac{3}{8}$ -in. NPT; outputs are 10-mm push-lock tube fittings. Maximum input pressure is 7 bar (100 psi). Use the ground stud on the side of the enclosure to connect the module or system to a true earth ground.

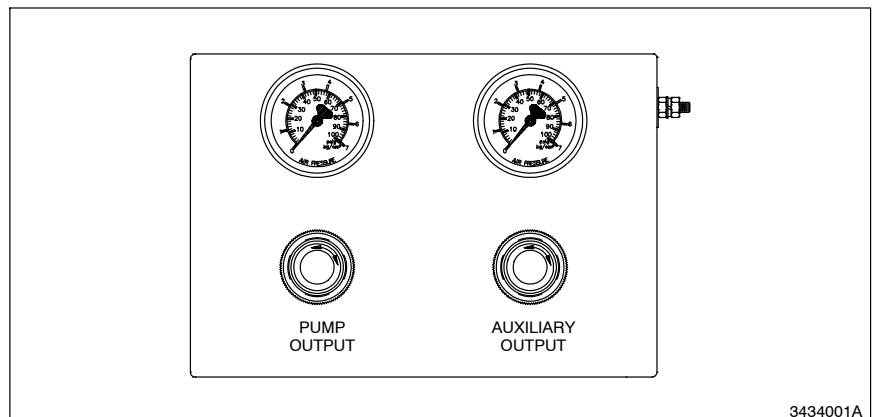


Fig. 1 Dual Gauge/Regulator Module

2. Parts Lists

Use this instruction sheet to order replacement parts for the module. Other components of your system are covered in separate instruction sheets or manuals.

To order parts for Nordson equipment, call the Nordson Customer Service Center or your local Nordson representative.

When ordering parts, please include the part number, the description given in the parts list, and the quantity desired.

Module Parts List

See Figure 2.

Item	Part	Description	Quantity	Note
-	164586	Module, 2 gauge/regulator	1	
1	226715	• Gauge, air, 0-100 psi	2	
2	900740	• Tubing, polyurethane, 10 mm	AR	A
3	972125	• Elbow, male, 10 mm tube x $\frac{1}{4}$ in. RPT	6	
4	901444	• Regulator, air, 5-125 psi, $\frac{1}{4}$ in. NPT	2	
5	900236	• Sealant, paste, PTFE (1 pint)	AR	
6	972126	• Elbow, male, 6mm tube x $\frac{1}{8}$ in. RPT	2	
7	164587	• Manifold, tee, input	1	
8	982094	• Screw, pan head, M5 x 6 mm	2	
9	983401	• Washer, lock, split, M5	4	
10	982136	• Screw, pan head, M5 x 16 mm	1	
11	240674	• Tag, ground	1	
12	984702	• Nut, hex, M5, brass	2	
13	983021	• Washer, flat, 0.203 x 0.406 in., brass	1	
14	900586	• Tubing, polyurethane, 6 mm, blue	AR	A
15	972157	• Connector, female, 6 mm tube x $\frac{1}{8}$ in. RPT	2	

NOTE A: Order in increments of one foot.

AR: As Required

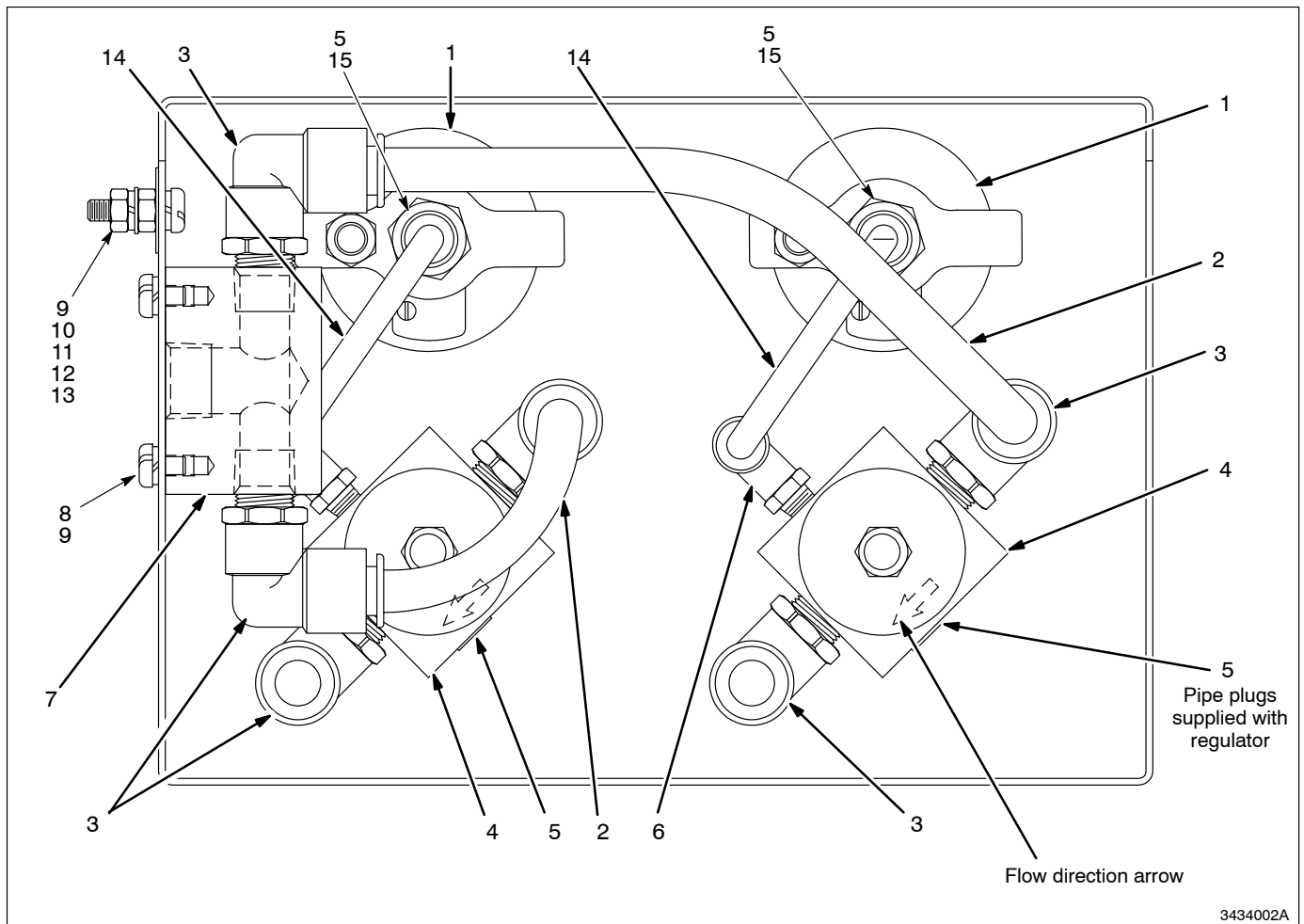


Fig. 2 Dual Gauge/Regulator Module Components

Nordson and the Nordson logo are registered trademarks of Nordson Corporation

