

# P. E. Powder Transfer Pump Kit

## 1. Introduction

The porcelain enamel (P. E.) powder transfer pump kit is used to transfer powder from bulk containers to the main supply hopper used to feed spray guns.

The kit includes the pump, support bracket, and feed tube. Individual parts can be purchased separately.

## 2. Parts

### P.E. Powder Transfer Pump Kit

See Figure 1.

| Item | Part    | Description                                   | Quantity | Note |
|------|---------|---|----------|------|
| —    | 248 683 | Service kit, pump, powder, transfer, p.e.     | 1        |      |
| 1    | 247 815 | • Hose, air, 1/4 in. ID x 6 ft                | 1        |      |
| 2    | 247 820 | • Valve, check, 1/4 NPT                       | 1        |      |
| 3    | 973 085 | • Nipple, steel, schedule 40, 1/4, 0.87       | 1        |      |
| 4    | 246 479 | • Nozzle, air, powder pump                    | 1        |      |
| 5    | 942 106 | • O-ring, silicone, conductive, 0.750 x 1.000 | 1        |      |
| 6    | 245 802 | • Body, pump, 1.00 diameter leg               | 1        | A    |
| 7    | 247 402 | • Throat, transfer pump, w/O-rings            | 1        |      |
| 8    | 941 176 | • • O-ring, silicone, 0.813 x 1.000 x 0.094   | 2        |      |
| 9    | 942 101 | • • O-ring, silicone, 0.750 x 1.000 x 0.125   | 1        |      |
| 10   | 248 685 | • Bracket, transfer pump/pyrex tube           | 1        |      |
| 11   | 247 397 | • Tube, pyrex, 0.70 ID                        | 1        |      |
| 12   | 900 732 | • Grommet, rubber, 1.000 x 0.44               | 1        |      |
| 13   | 247 393 | • Tubing, 0.750 ID, 3.00 lg                   | 1        |      |
| 14   | 939 459 | • Clamp, hose                                 | 2        |      |
| 15   | 942 146 | • O-ring, silicone, conductive, 1.000 x 1.250 | 1        |      |
| 16   | 247 821 | • Tube, feed, drum truck                      | 1        |      |
| 17   | 247 822 | • Tube, guide, drum truck                     | 1        |      |

NOTE A: This part number is obsolete, and has been replaced by part number 226 707.

**P.E. Powder Transfer Pump  
Kit (contd)**

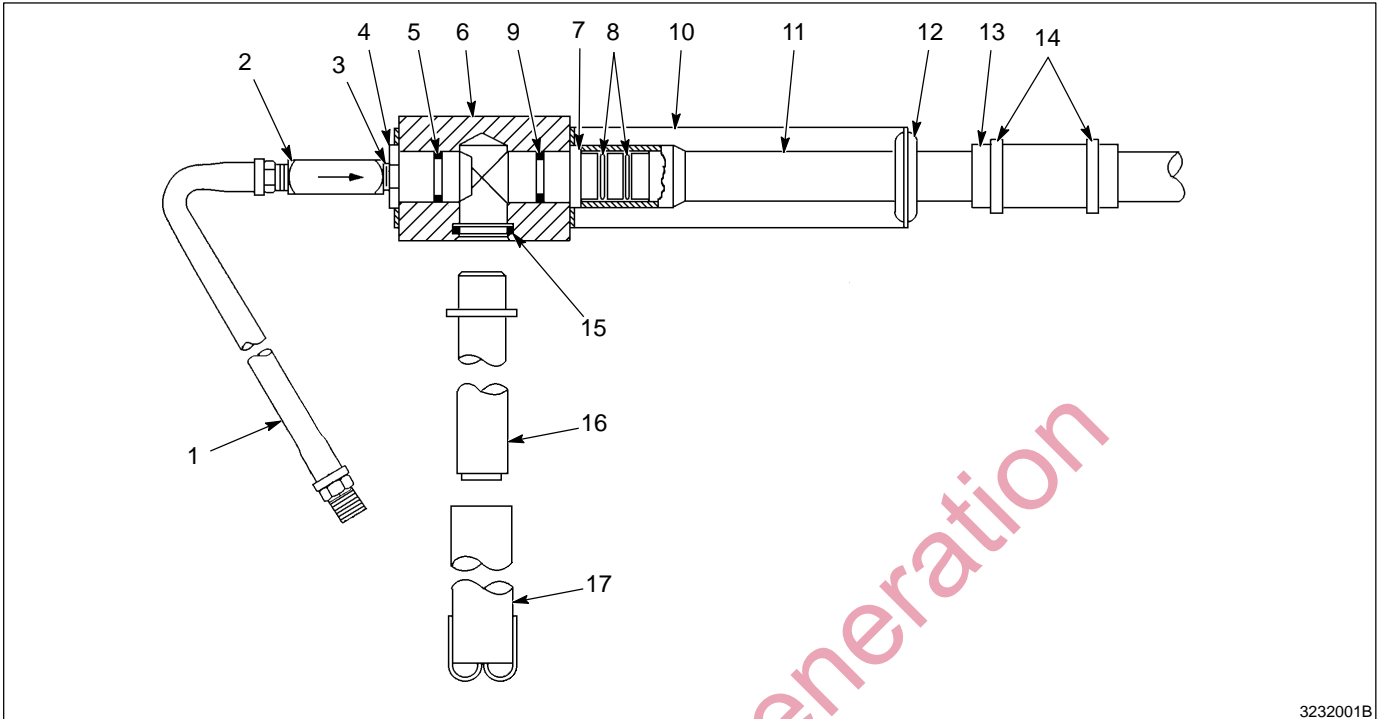


Fig. 1 P.E. Powder Transfer Pump Kit

3232001B

Previous Generation

Original copyright date 1991. Nordson and the Nordson logo are registered trademarks of Nordson Corporation.