

# **Prodigy® Color-on-Demand® Generation II Display Module Retrofit Kit Installation**

## **Introduction**

This instruction sheet covers installation of the Prodigy® Color-on-Demand® Controller Display Module Retrofit Kit. Use this kit to replace a display module with a new one. The kit includes a new, smaller Pro-face® display module and module mounting clips, two adapter plates and a gasket, along with the required fasteners.

## **Cimrex Module Removal**

See Figure 1.

1. Remove the rear cover from the controller. Disconnect the ground wire from the cover before setting it aside.
2. Disconnect the network cable, power cable, and ground wiring from the display module.
3. Loosen and remove the clips securing the display module to the enclosure.
4. Push on the rear of the module while pulling on the front to remove it from the enclosure.

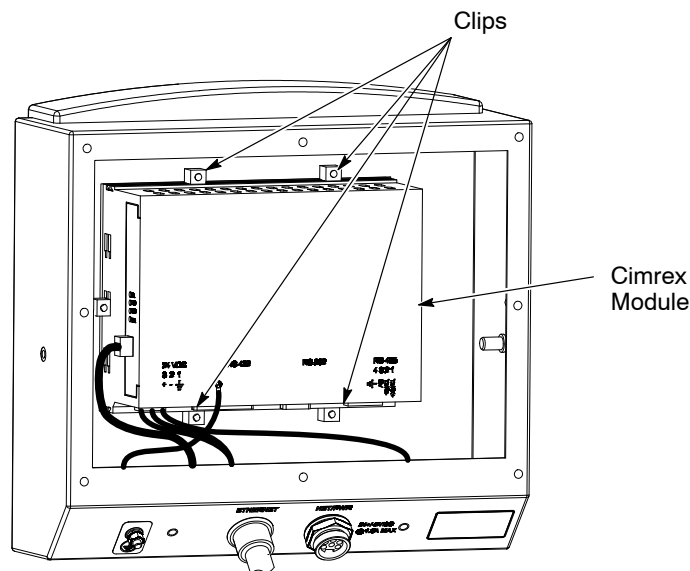


Figure 1 Removing the Cimrex Module

## Pro-Face® Module Installation

1. See Figure 2. Remove the adhesive liner from the gasket (3), then install the gasket over the front adapter plate (2) studs with the adhesive side against the plate.
2. Install the front adapter plate inside the bezel (7). Install the rear adapter plate (4) into the enclosure and over the front adapter plate studs.
3. Install the lockwashers (5) and nuts (6) on the studs and tighten them securely to compress the gasket and clamp the adapter plates to the enclosure.
4. Install the display module (1) through the front adapter plate.
5. Six mounting clips are included with the display module. Make sure the studs are threaded up all the way against the clip brackets on four clips (9).
6. Insert four of the six clip hooks included with the module into the slots (8) in the top and bottom of the display module.
7. Tighten the clip studs with a screwdriver to press the stud buttons against the rear adapter plate and pull the display module up against the front adapter plate.

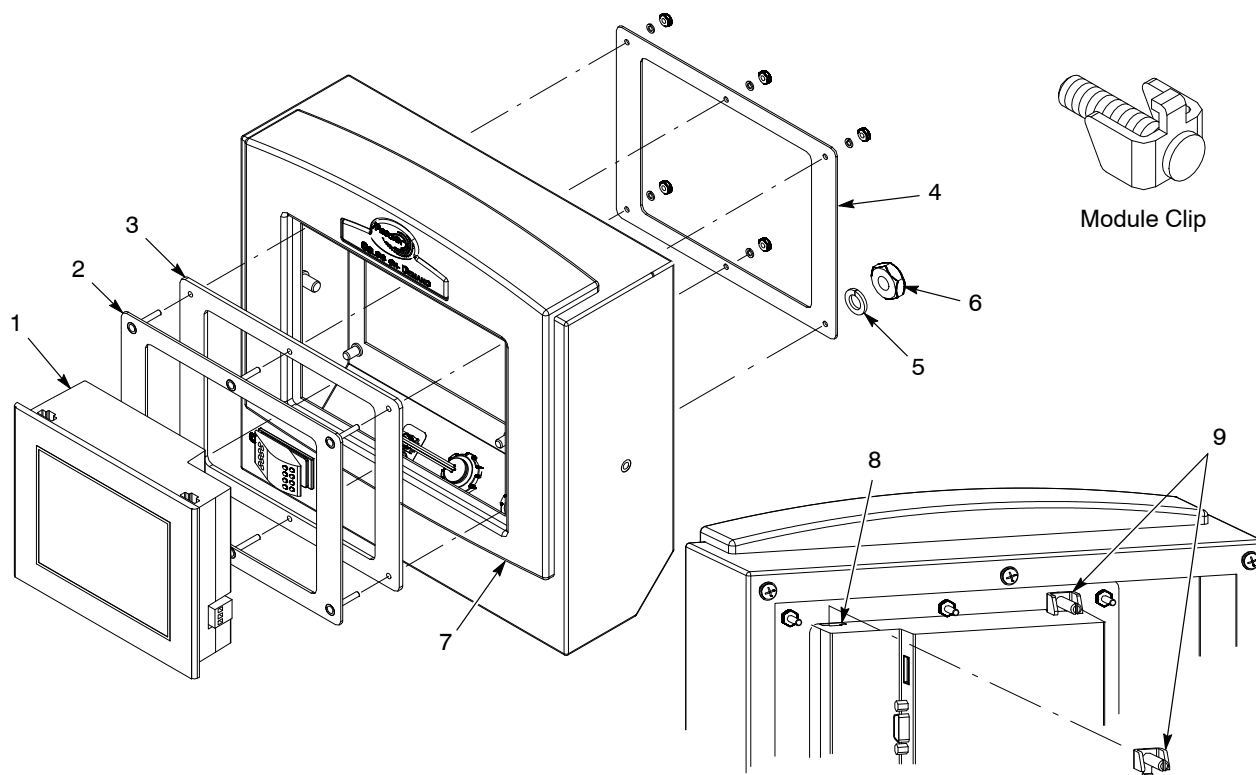


Figure 2 Installing New Display Module

- |                                   |                       |                 |
|-----------------------------------|-----------------------|-----------------|
| 1. Display module                 | 4. Rear adapter plate | 7. Bezel        |
| 2. Front adapter plate with studs | 5. Lockwashers (6)    | 8. Slots        |
| 3. Gasket                         | 6. Nuts (6)           | 9. Module clips |

8. Connect the network cable and the power and ground wires to the display module as shown in Figure 3. Note that the ground wire with ring-tong terminal must be installed over the lower right adapter plate stud and secured with the lockwasher and nut.
9. Reconnect the ground wire to the rear cover before installing it on the enclosure.

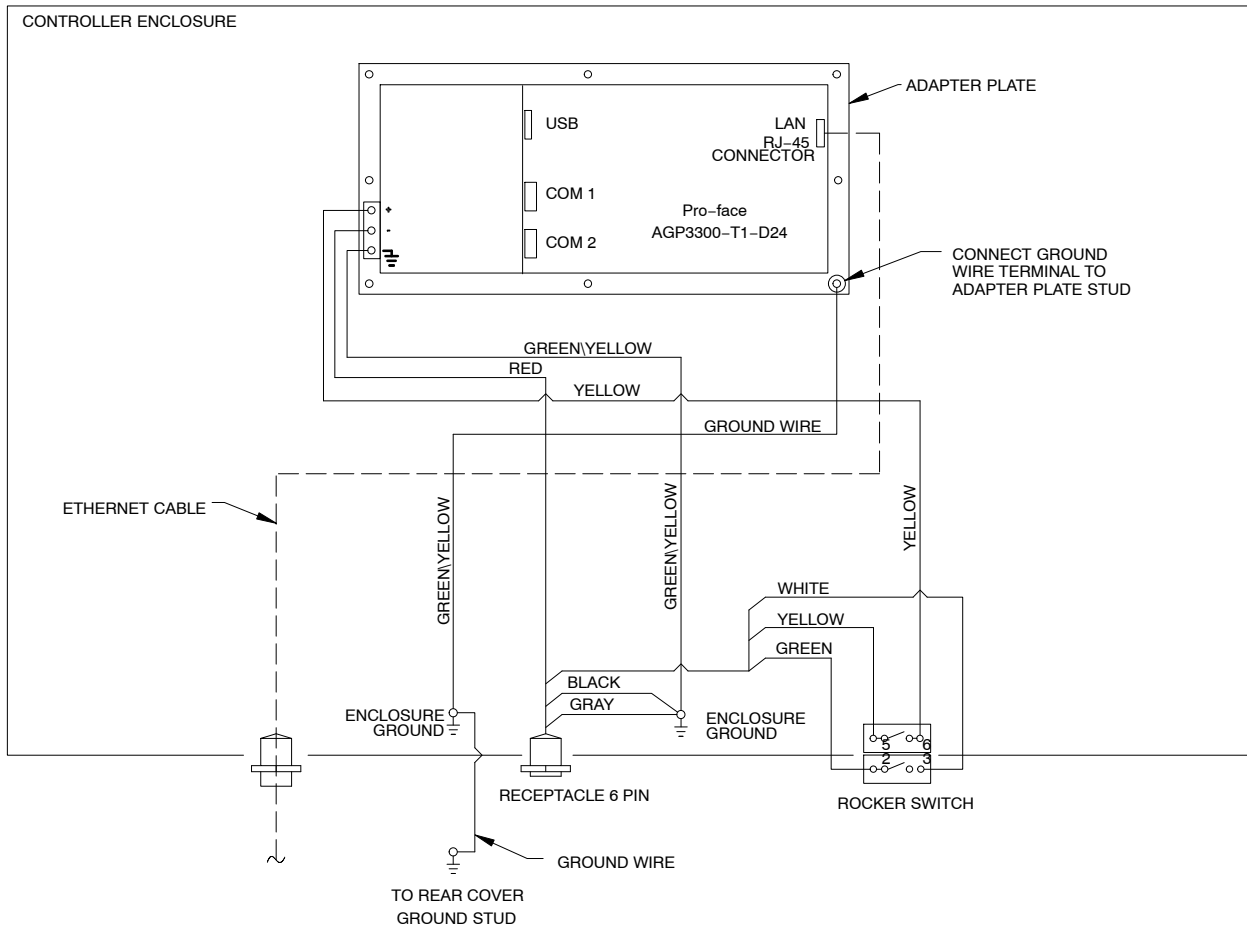


Figure 3 New Module Wiring

## Parts

Refer to Figure 2.

Item	Part	Description	Quantity	Note
–	1084551	KIT, retrofit, display, COD Gen II	1	
1	1084403	• TERMINAL, display, COD, Gen II	1	
2	-----	• PLATE, adapter, with studs	1	
3	-----	• GASKET, adapter plate	1	
4	-----	• PLATE, adapter	1	
5	983102	• WASHER, lock, split, #6, steel, zinc,	6	
6	984101	• NUT, hex, machine, #6-32, steel, zinc,	6	

Issued 05/12

Original copyright date 2008. Prodigy, Color-on-Demand, Nordson, and the Nordson logo are registered trademarks of Nordson Corporation.

Pro-Face is a registered trademark of Digital Electronics Corporation