

## Prodigy® Lance Assembly

### Description

The Prodigy Lance Assemblies supply 4 to 16 Prodigy HDLV pumps from the same fluidized powder source. The lances are used in the Prodigy Powder Port feed center for pumps supplying both manual and automatic guns. The lances come with powder tubing already installed. Refer to the parts list for the available lance configurations.

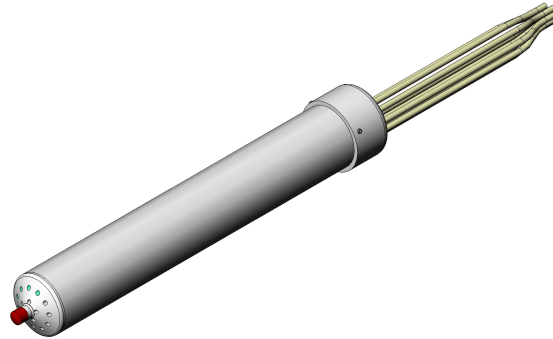


Figure 1 Prodigy Lance Assembly

### Parts

Parts are shown in Figure 2.

Item	Part	Description	Quantity	Note
–	1084131	LANCE, Prodigy, 4 pump	1	
–	1084132	LANCE, Prodigy, 6 pump	1	
–	1084133	LANCE, Prodigy, 8 pump	1	
–	1084134	LANCE, Prodigy, 10 pump	1	
–	1084135	LANCE, Prodigy, 12 pump	1	
–	1084136	LANCE, Prodigy, 14 pump	1	
–	1084137	LANCE, Prodigy, 16 pump	1	
1	1080607	• CAP, lance, Prodigy	1	
2	1084126	• BODY, lance, Prodigy	1	
3	1084125	• HEAD, lance, Prodigy	1	
4	982595	• SCREW, set, cone, M6 x 8 mm, stainless steel	3	
5	173101	• TUBING, powder, 6 mm ID x 8 mm OD, natural	1	A
6	1078006	• ADAPTER, tube, barbed, powder, Prodigy II pump	AR	
7	1071376	• KIT, fitting upgrade, lance	AR	B
8	1084127	• BUMPER, rubber, 19 mm x M6 thread	1	
–	1062178	TUBING CUTTER, 12 mm or less	1	C

NOTE A: Tubing is only sold in 160-m spools.

B: Use this kit to repair broken fittings or to add fittings to the lance head when adding pumps to the system. Each kit includes two fittings and installation instructions.

C: Use the tubing cutter to cut the ends of the powder tubing square.

AR: As Required

### Powder Tubing Replacement

Each lance assembly comes with 3.65 m (12 ft) of flexible powder tubing installed for each pump. The powder tubing can be replaced if it is damaged or clogged.

#### Removing the Old Tubing

1. See Figure 2. Disconnect the powder tubing (5) from the Prodigy HDLV pump.
2. Loosen the three set screws (4) then pull the cap (1) off the body (2). Slide the cap several inches up the existing powder tubing.
3. Unscrew the body from the head (3). Pull the head away from the body to access the tubing adapters (6).
4. Press down on the tube fittings (7) and pull the tubing adapters (6) out of the tube fittings.
5. Remove the adapters (6) from the tubing (5), then pull the tubing off the cap (1) and body (2).

#### Cutting the New Tubing

- Use a tubing cutter to ensure that both ends of the new lengths of tubing are square.
- Cut the new tubing for each pump to 3.65 m (12 ft). If you cut the tubing shorter, make sure you leave enough slack to get the lance in and out of the feed source.
- Do not splice two pieces of tubing together. Using fittings in the tubing increases the risk of cross contamination.

#### Installing the New Tubing

See Figure 2

1. Insert the new powder tubing through the cap (1) and body (2).
2. Install the barbed end of the tubing adapters (6) into the ends of the powder tubing (5). Insert the tubing adapters into the fittings (7).
3. Hand-tighten the body (2) onto the head (3).
4. Install the cap (1) onto the body (2) and tighten the three set screws (4).
5. Route the powder tubing (5) to the HDLV pumps. Connect to tubing to the pump inlet fittings.

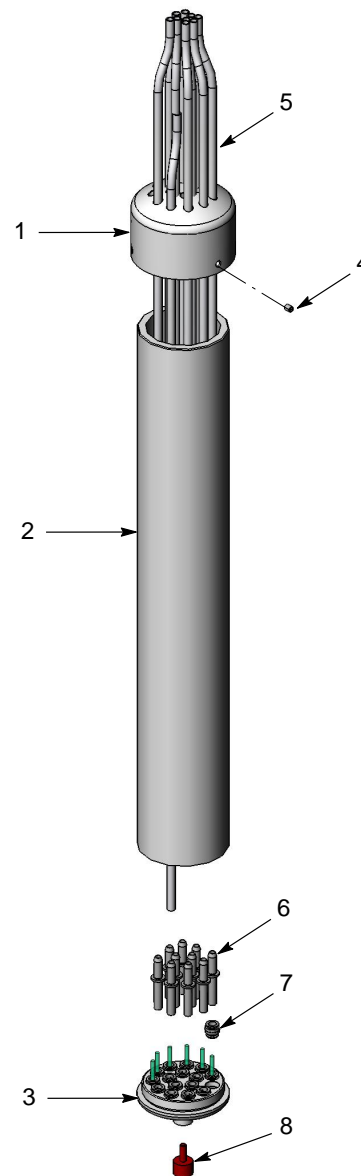


Figure 2 Lance Assembly Repair and Parts

- |               |             |
|---------------|-------------|
| 1. Cap        | 5. Tubing   |
| 2. Body       | 6. Adapters |
| 3. Head       | 7. Fittings |
| 4. Set screws | 8. Bumper   |

Issued 8/20

Original copyright date 2008. HDLV, Prodigy, Nordson, and the Nordson logo are registered trademarks of Nordson Corporation.