

Tribomatic® Wand Extensions

Description

Two 20-inch (508 mm) extension kits are available for the Tribomatic Wand powder spray gun:

PTFE: Used for most organic powders

Nylon: Used for PTFE powders

The kits consist of an extension tube, sleeve, and O-rings.

Installation

1. Remove the deflector (1), nozzle (2), and charge module (3) from the wand.
2. Install the end of the extension sleeve (4) with the single O-ring into the wand.
3. Install the extension tube (5) over the end of the sleeve.
4. Install the charge module (3) into the extension tube, then install the nozzle (2) and deflector (1)

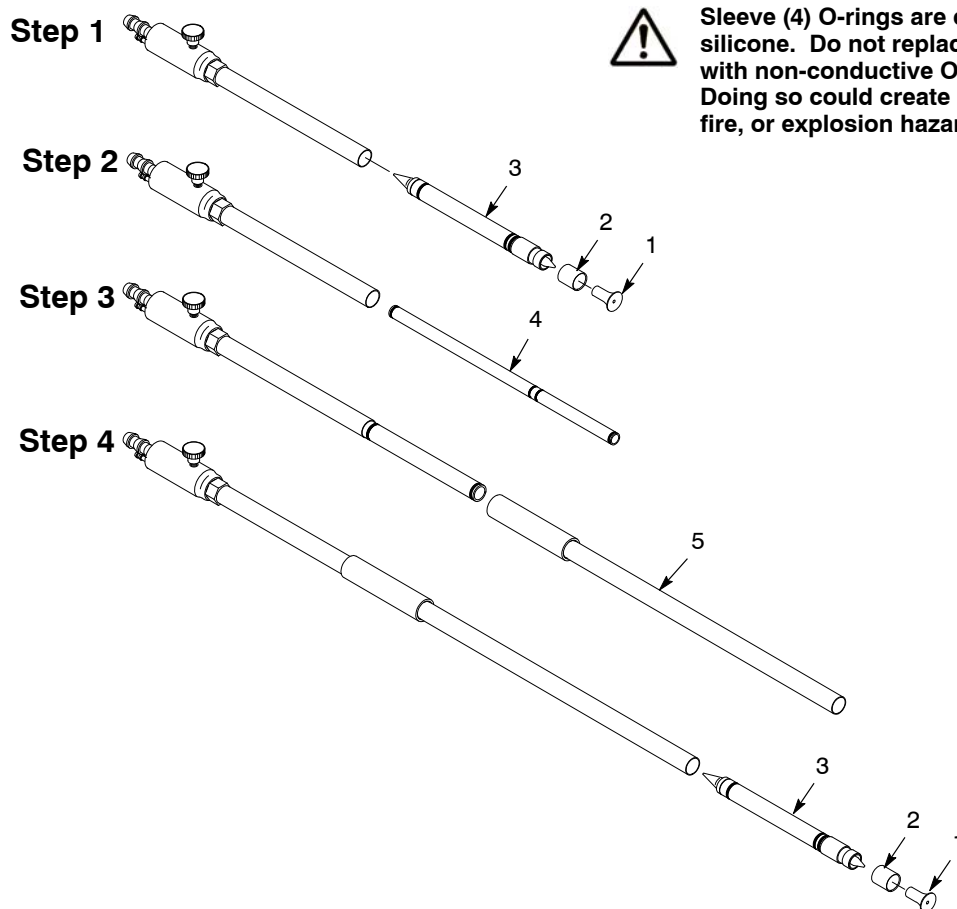


Figure 1 Installation

Parts

PTFE Extension Kit

Item	Part	Description	Quantity	Note
–	1024585	KIT, 20 in. extension, PTFE, Tribomatic wand	1	
1	1024582	• SLEEVE, 20 in. extension, PTFE, Tribomatic wand	1	
2	940147	• O-RING, silicone, conductive, 0.50 x 0.625 in.	4	A
3	-----	• TUBE, 20 in. extension, Tribomatic wand	1	
4	941193	• O-RING, silicone, 0.937 x 1.125 x 0.093 in.	1	

NOTE A: Never replace conductive silicone O-rings with non-conductive O-rings.

Nylon Extension Kit

Item	Part	Description	Quantity	Note
–	1024587	KIT, 20 in. extension, nylon, Tribomatic wand	1	
1	1024586	• SLEEVE, 20 in. extension, nylon, Tribomatic wand	1	
2	940147	• O-RING, silicone, conductive, 0.50 x 0.625 in.	4	A
3	-----	• TUBE, 20 in. extension, Tribomatic wand	1	
4	941193	• O-RING, silicone, 0.937 x 1.125 x 0.093 in.	1	

NOTE A: Never replace conductive silicone O-rings with non-conductive O-rings.

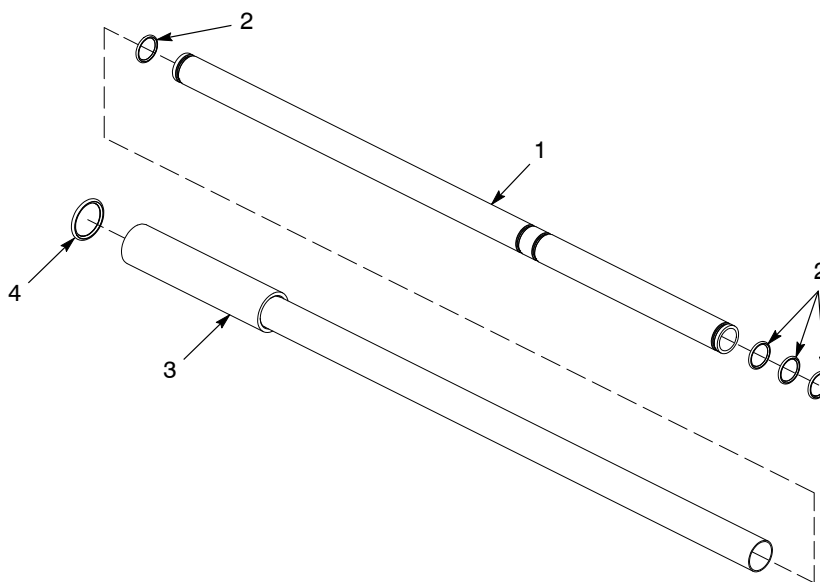


Figure 2 Parts

Issued 7/06

Original copyright date 2006. Tribomatic, Nordson, and the Nordson logo are registered trademarks of Nordson Corporation.