

Antistatic Powder Feed Tubing

Description

See Figure 1. Antistatic powder feed tubing is clear, plastic tubing with a conductive copper ground wire molded into the wall, which provides a path to ground. Antistatic tubing provides the following benefits over traditional feed tubing:

- Elimination of tribocharging, which reduces pinholing in the feed tubing
- Higher, more consistent powder flow
- Cleaner spray gun, reducing maintenance time
- Less powder buildup and impact fusion inside the feed tubing

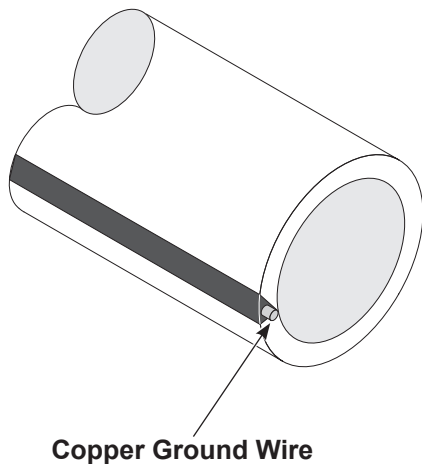


Figure 1 Antistatic Powder Feed Tubing

Parts

Order antistatic powder feed tubing in one-foot increments.

NOTE: Refer to your powder feed center manual for the required hose clamp part numbers. Feed centers manufactured before July 2006 require new hose clamps to use antistatic tubing.

- **Spectrum II Powder Feed Center:** 1060125B or later
- **Original US Powder Feed Center:** 334590B or later

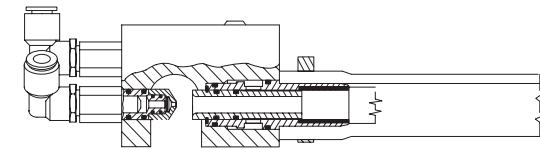
Part	Description	Minimum Order Quantity
768176	TUBING, powder, antistatic, 11 mm (0.43 in.) ID	1 PC (100 ft)
768178	TUBING, powder, antistatic, 12.7 mm (0.5 in.) ID	1 PC (100 ft)
1069787	TUBING, powder, antistatic 19 mm (0.75 in.) ID	1 PC (100 ft)
1613851	TUBING, powder, antistatic, 11 mm (0.43 in.) ID, 100-m (328 ft) roll	1 PC (100 m)
1604802	TUBING, powder, antistatic, 12.7 mm (0.5 in.) ID, 100-m (328 ft) roll	1 PC (100 m)

Recommended Usage

Refer to the following paragraphs to determine which pumps can use antistatic powder feed tubing.

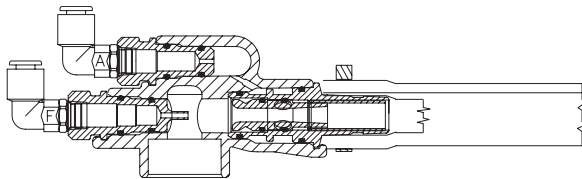
Pumps Designed for Antistatic Powder Feed Tubing

The pumps shown in Figure 2 can use antistatic powder feed tubing.

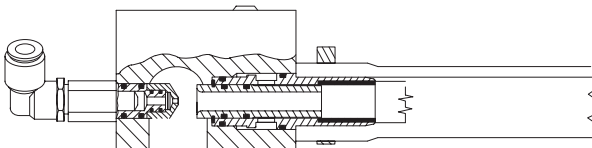


100 PLUS Standard Flow

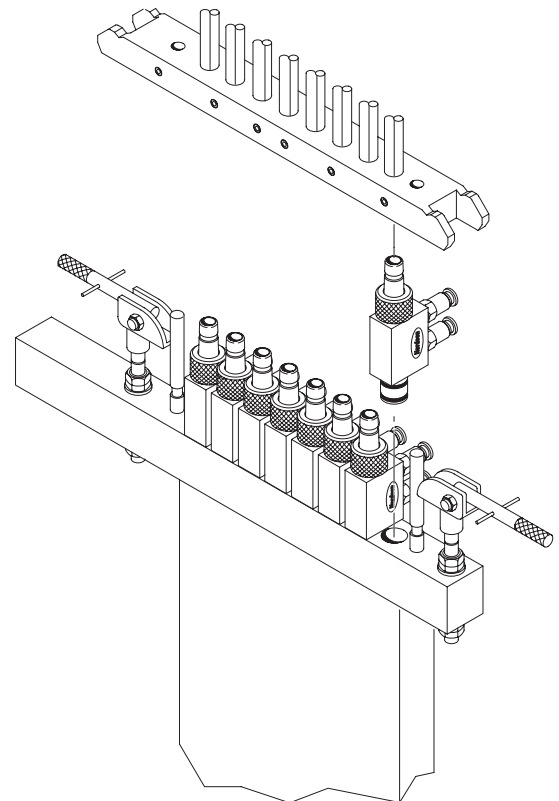
NOTE: Throat holder 249506D or later is tapered to make installing 11-mm feed tubing easier.



Modular



Transfer Pumps with Metal Throat Holder

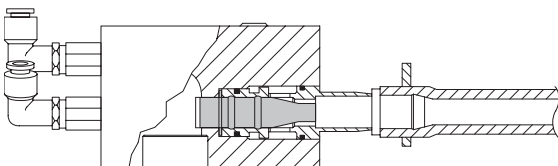


Inline with Powder Feed Center

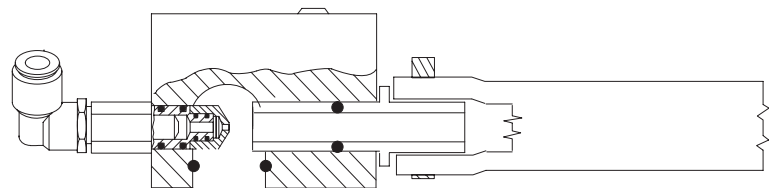
Figure 2 Use Antistatic Powder Feed Tubing with These Pumps

Pumps Not Designed for Antistatic Powder Tubing

The pumps shown in Figure 3 cannot use antistatic powder feed tubing. These pumps have nonmetallic hose barbs which will not allow the antistatic powder feed tubing to establish a path to ground. Although antistatic powder feed tubing would work with these pumps, you will not have the benefit of an electrostatic discharge path.



**100 PLUS Low Flow
with Tivar hose adapter 139943**



**Transfer Pumps
with PTFE throat 244642
or
Tivar throat 226713**

Figure 3 Do Not Use Antistatic Powder Feed Tubing with These Pumps

Installation Guidelines



CAUTION: The black stripe with the molded copper braid must contact the metal pump throat holder.

Preparation

Prepare the tubing and pump to make tubing installation easier:

- Use a tapered punch to widen the ID of the tubing.
- Slightly moisten the throat holder.

Ground Contact

See Figure 2. The integrated copper wire braid makes ground contact through the inside of the tubing to a grounded, metal throat holder.

The ground path must continue through the throat holder's conductive O-ring, pump body, pump adapter with conductive O-ring, hopper lid, ground wire, and on to a true earth ground.

Powder Feed Centers

NOTE: As of July 2006, all powder feed centers ship with antistatic powder feed tubing.

See Figure 2. When used in a powder feed center, the tubing's ground path is through the hose clamps at the top of the lance assembly.

New hose clamps are required to retrofit existing feed centers. Contact your Nordson representative for more information.

Issued 8/24

Original copyright date 2006. Nordson and the Nordson logo are registered trademarks of Nordson Corporation.

All other trademarks are the property of their respective owners.