

Solenoid Valve Retrofit Kit

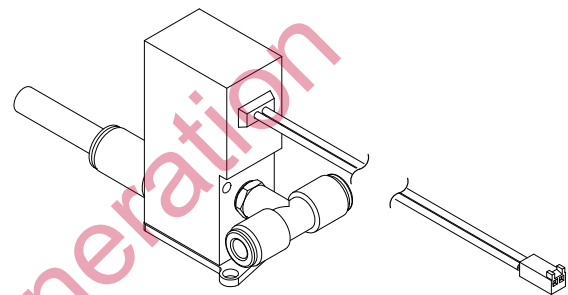
for Econo-Coat[®] Manual Powder Spray Gun Control Units

Description

See Figure 1. The solenoid valve retrofit kit replaces the existing solenoid valve in old-style Econo-Coat manual powder spray gun control units.

This kit also replaces the solenoid valve in new-style control units. If the inside of your control unit does not look like the one shown in Figure 2, remove the fittings from the new solenoid valve and use the fittings from your existing solenoid valve.

Refer to the *Repair* section of the control unit manual for more information.



1401556A

Figure 1 Solenoid Valve Retrofit Kit

| Part | Description |
|---------|---|
| 1005679 | VALVE, solenoid, 3-way, 24 Vdc, 2 W, retrofit |

Preparation



WARNING: Allow only qualified personnel to perform the following tasks. Follow the safety instructions in this document and all other related documentation.



WARNING: Turn off the control unit and disconnect the system from its input power source before performing any of the following tasks. Failure to observe this warning may result in a severe shock.



WARNING: Relieve system air pressure and disconnect the system from its input air supply before performing any of the following tasks. Failure to observe this warning may result in personal injury.

1. Turn off the control unit and disconnect it from its input power source.
2. Relieve supply air pressure and disconnect the control unit from its input air supply.
3. Remove the control unit's cover.

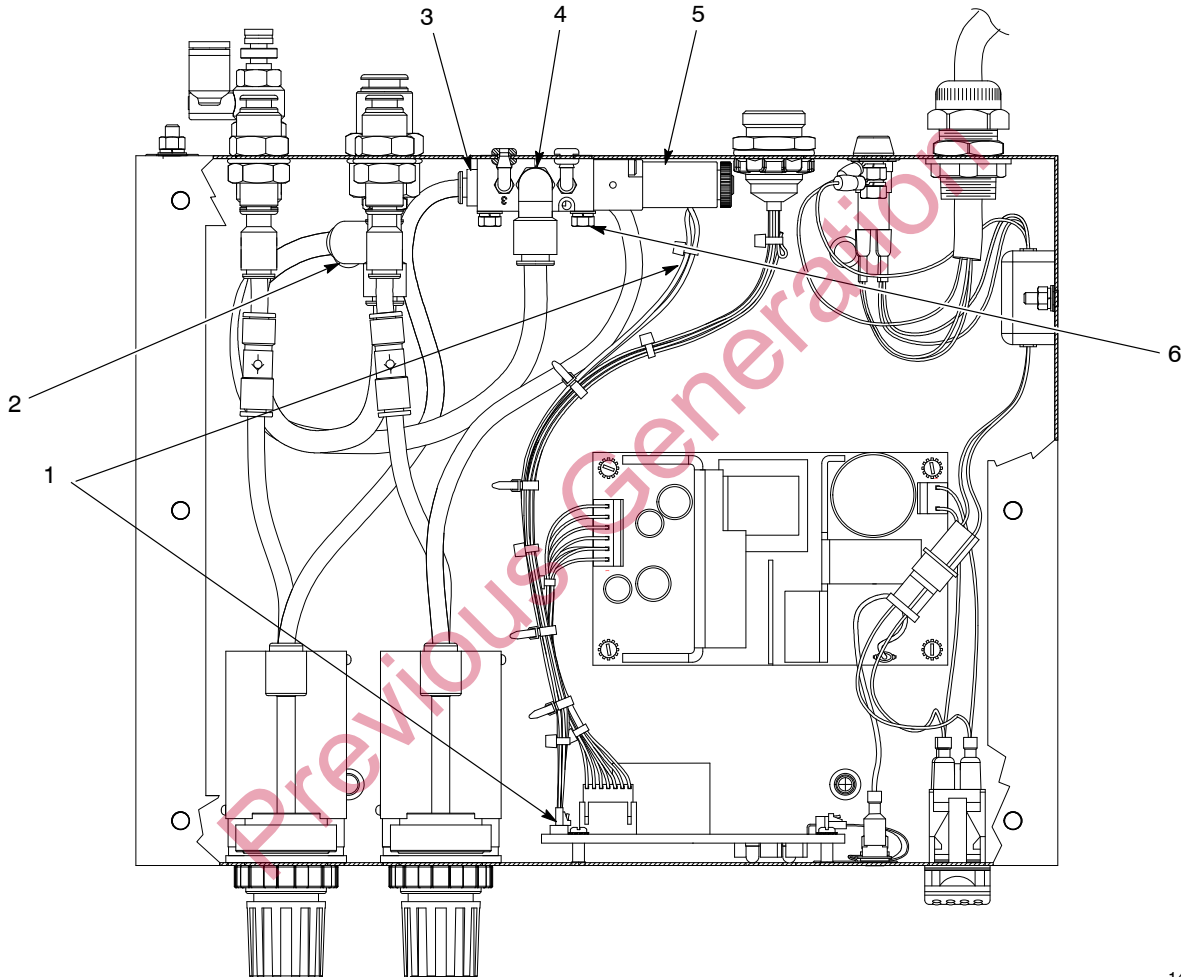
Removing the Old Solenoid Valve

1. See Figure 2. Disconnect the air tubing between the solenoid elbow (4) and main tee (2). Discard this tubing.
2. Disconnect the two air tubes from the solenoid tee (3).
3. Disconnect the solenoid wiring harness (1) from the printed circuit board.



CAUTION: Be careful not to cut any wires when you cut off the cable straps.

4. Carefully cut the four cable ties securing the solenoid wiring harness to the gun input and power supply wiring harnesses.
5. Remove the solenoid valve assembly (5) from the control unit by removing the hex nuts and washers (6).



1401554A

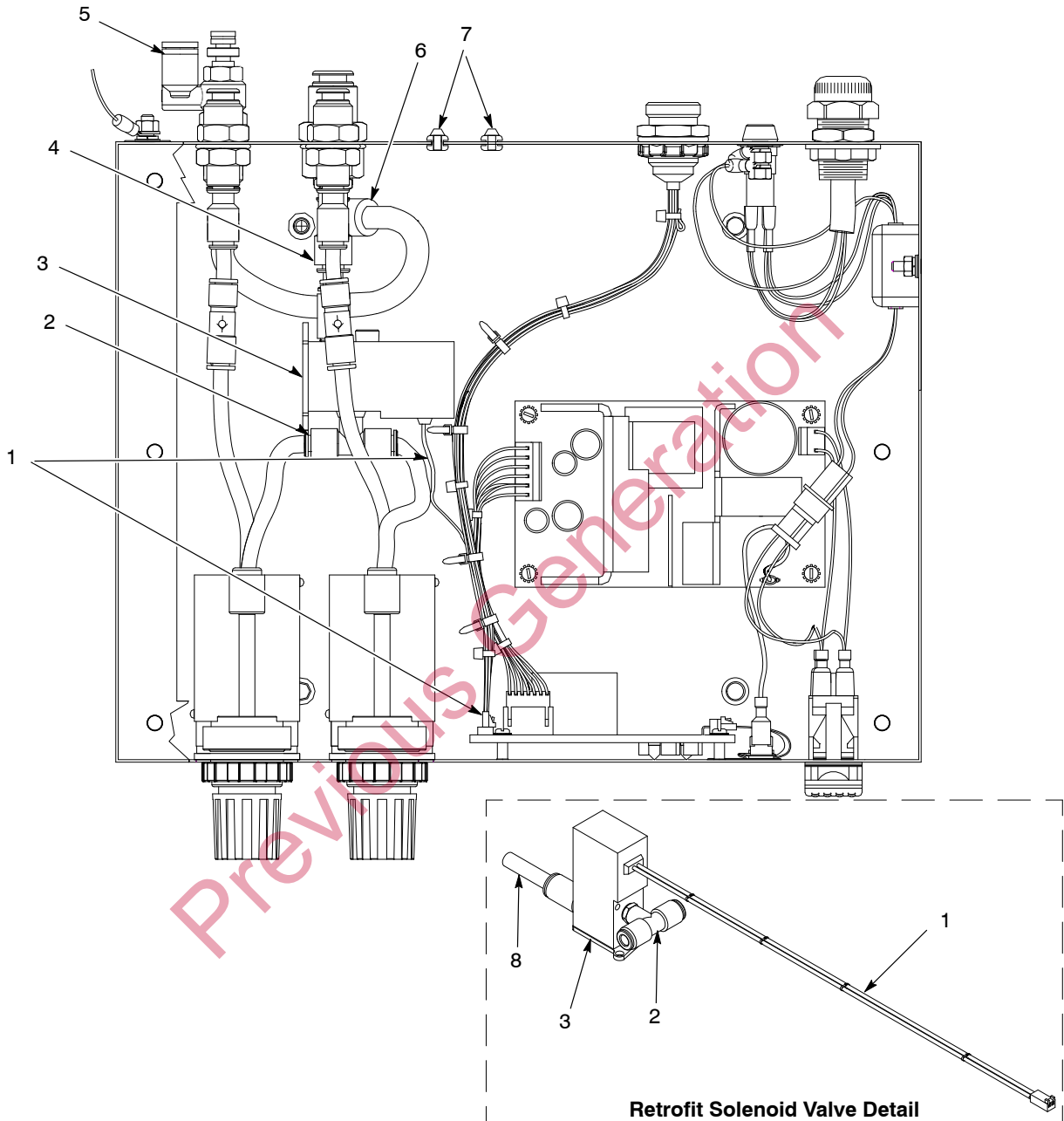
Figure 2 Solenoid Valve Retrofit — Removing the Old Solenoid Valve

- | | | |
|----------------------------|-------------------|-------------------------|
| 1. Solenoid wiring harness | 3. Solenoid tee | 5. Solenoid valve |
| 2. Main tee | 4. Solenoid elbow | 6. Hex nuts and washers |

Installing the Solenoid Valve Retrofit Kit

1. See Figure 3. Disconnect the air tubing from the straight end (4) of the main tee. Connect this tubing to the branch (6) of the main tee.
2. Push the straight tube (8) on the new, retrofit solenoid valve (3) into the straight end of the main tee (4).

3. Connect the regulator air tubes to the retrofit solenoid's tee (2).
4. Connect the solenoid wiring harness (1) to the printed circuit board. Use cable ties to secure the three wiring harnesses together.
5. Push the two nylon pins (7) (shipped with the retrofit solenoid kit) into the air vent grommets.
6. Install the control unit's cover.

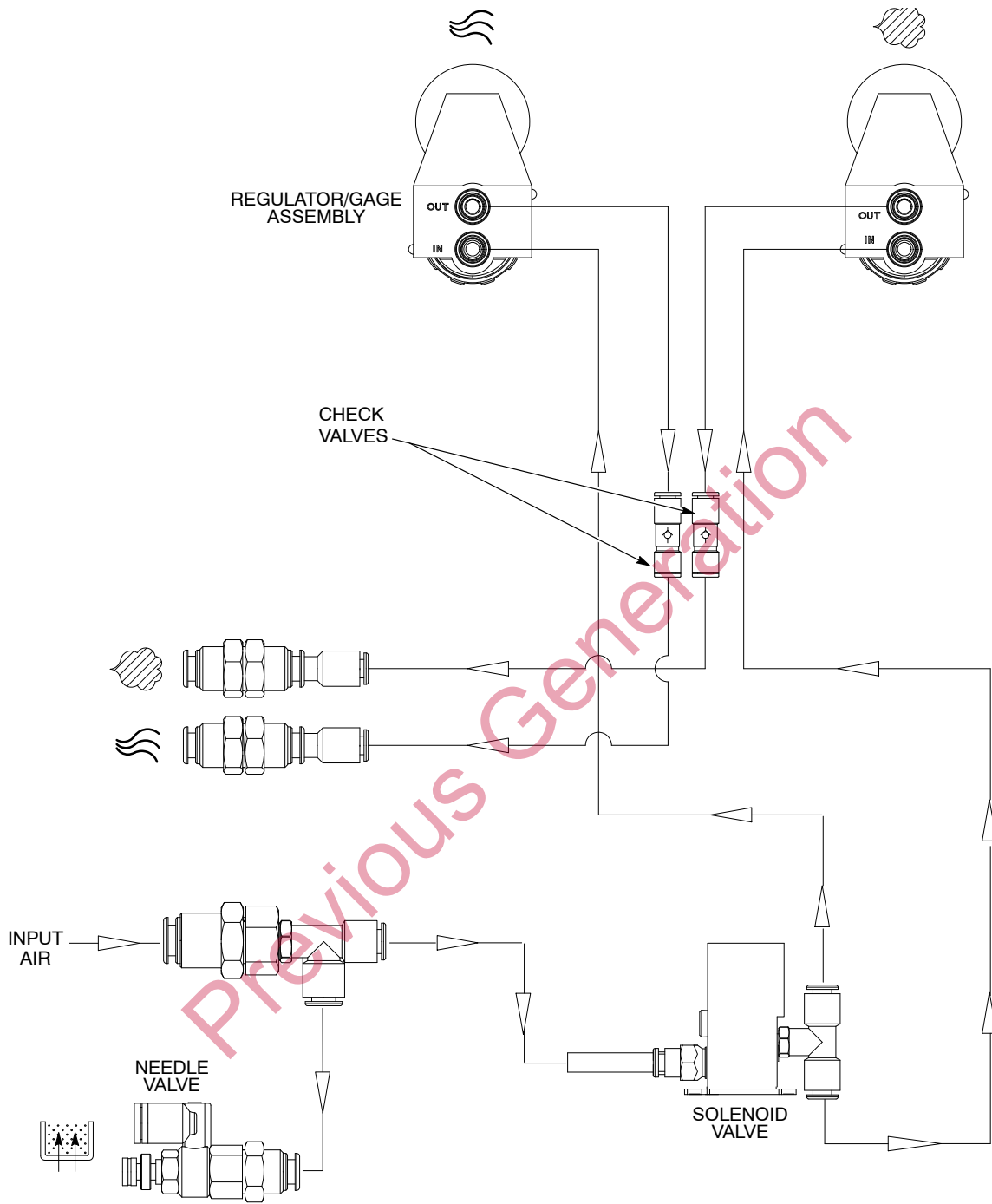


1401555A

Figure 3 Solenoid Valve Retrofit — Installing the New Solenoid Valve

- | | | |
|----------------------------|----------------------------|------------------|
| 1. Solenoid wiring harness | 4. Main tee — straight end | 7. Nylon pins |
| 2. Solenoid tee | 5. Needle valve | 8. Straight tube |
| 3. Solenoid valve | 6. Main tee — branch | |

Pneumatic Schematic



1400059B

Figure 4 Pneumatic Schematic — Old-Style Control Units with Solenoid Valve Retrofit Kit

Issued 11/05

Original copyright date 2005. Econo-Coat, Nordson, and the Nordson logo are registered trademarks of Nordson Corporation.