

Panel Mounted Air Manifold

Description

The Nordson Panel Mounted Air Manifold is a multipurpose metric unit designed to meet the needs of several application possibilities in the powder industry. It can supply regulated air to five individual air consumption devices. The air manifold is controlled by a pilot air valve that engages the air supply to the five air regulators simultaneously.

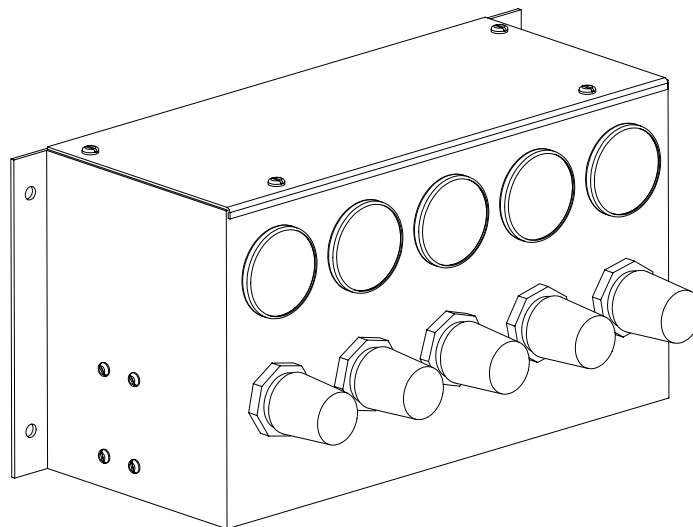


Figure 1 Panel Mounted Air Manifold

Parts

See Figure 2.

Item	Part	Description	Quantity	Note
—	231197	MANIFOLD, air, panel mounted, Metric	1	
1	247757	• PANEL, top, painted	1	
2	900511	• TUBING, polth, 0.375 OD x 0.062 in., blue	1.45 ft	A
3	247758	• PANEL, front, painted	1	
4	901074	• VALVE, airpilot, 2 way, metric w/bracket	1	
5	972119	• ELBOW, male, 1/4-in. tube x 1/8-in. NPT	5	
6	901444	• REGULATOR, air, 5–125 psi, 1/4-in. NPT	5	
7	972183	• ELBOW, male, 3/8-in. tube x 1/4-in. NPT	5	
8	226715	• GAUGE, air 0–100 psi	5	
9	900509	• TUBING, polth, 0.250-in. OD x 0.040-in., blue	3 ft	A
10	972716	• CONNECTOR, male, 1/4-in. tube x 1/8-in. NPT	5	
11	972841	• CONNECTOR, male, 10 mm tube x 1/4 uni	5	
12	148256	• PLUG, 10 mm, tubing	1	
13	973572	• COUPLING, pipe, hyd, 1/8 in.	5	
NS	1073425	KIT, fittings, air panel, english conversion	1	
NOTE A: Cut tubing to length as needed.				
NS: Not Shown				

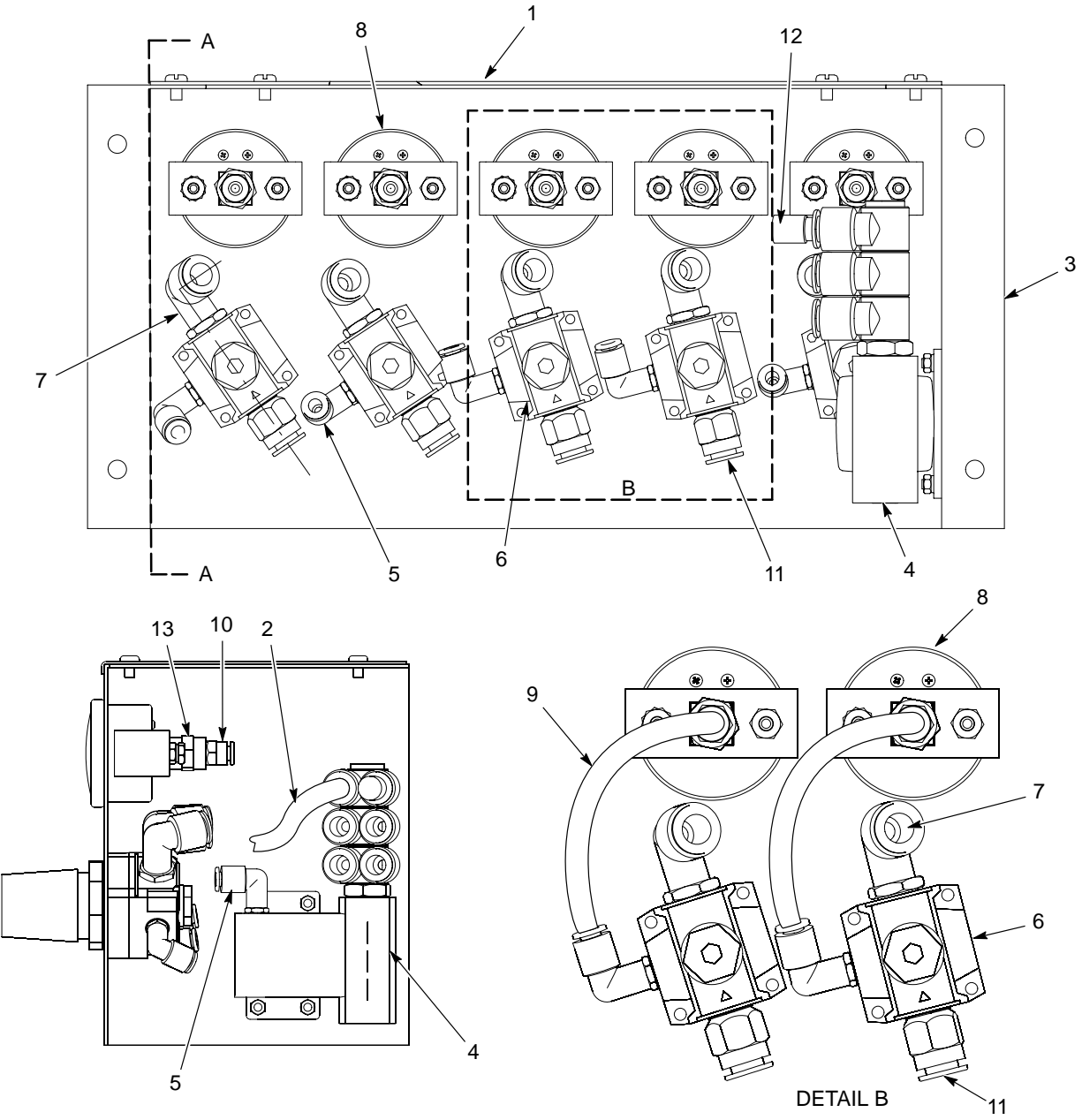


Figure 2 Panel Mounted Air Manifold – Interior View

Specifications

2-Way Pilot Air Valve	
Air Service	5–250 psig
Ambient Temperature	35 °F min 1750 °F max
Pilot Pressure	Equal or greater than the line pressure with 30 PSIC as minimum
Air Line Regulator	
Maximum Supply Pressure	20.69 bar (300 psi)
Maximum Operating Temperature	120 °F (49 °C)
Reduced Pressure Range	1–8.6 bar (0–125 psi)

Issued 10/06

Original copyright date 1988. Nordson and the Nordson logo are registered trademarks of Nordson Corporation.