

# iControl<sup>®</sup> Nozzle Purge Kit Installation

## Introduction

This instruction sheet covers the installation of the Single and Dual iControl Nozzle Purge Kits used for Versa-Spray spray gun nozzle purging. Refer to your iControl Integrated Control System manual for instructions on configuring and operating nozzle purge:

- Original console version: Manual P/N 1024757, version B or above
- New console version: Manual P/N 1044158

The kits consist of one or two solenoid/pilot-operated valve assemblies, an air manifold, air tubing, tube fittings, and fasteners.

## Installation



**WARNING:** Allow only qualified personnel to perform the following tasks. Follow the safety instructions in this document and all other related documentation.



**WARNING:** Shut down the iControl system, if running, and lock out and tag electrical power at an external disconnect. Shut off and relieve the iControl system air supply.

Refer to Figures 1, 2, and 3.

1. Unpack the kit and check the contents with the parts list in this instruction sheet.
2. Open the console and install the kit hardware and tubing as shown in Figure 1. Before installing the manifold (12), remove the plug from the end of the console manifold.
3. Refer to Table 1. Plug the solenoid valve harness(es) into the P5 receptacle(s) on the backplane(s) depending on the number of consoles in the system, the type of kit you install, and number of banks to be used.
4. Install 6-mm air tubing from the 4-tube fittings you installed in the rear panel to the purge adapters on the spray guns.

# Installation *(contd)*

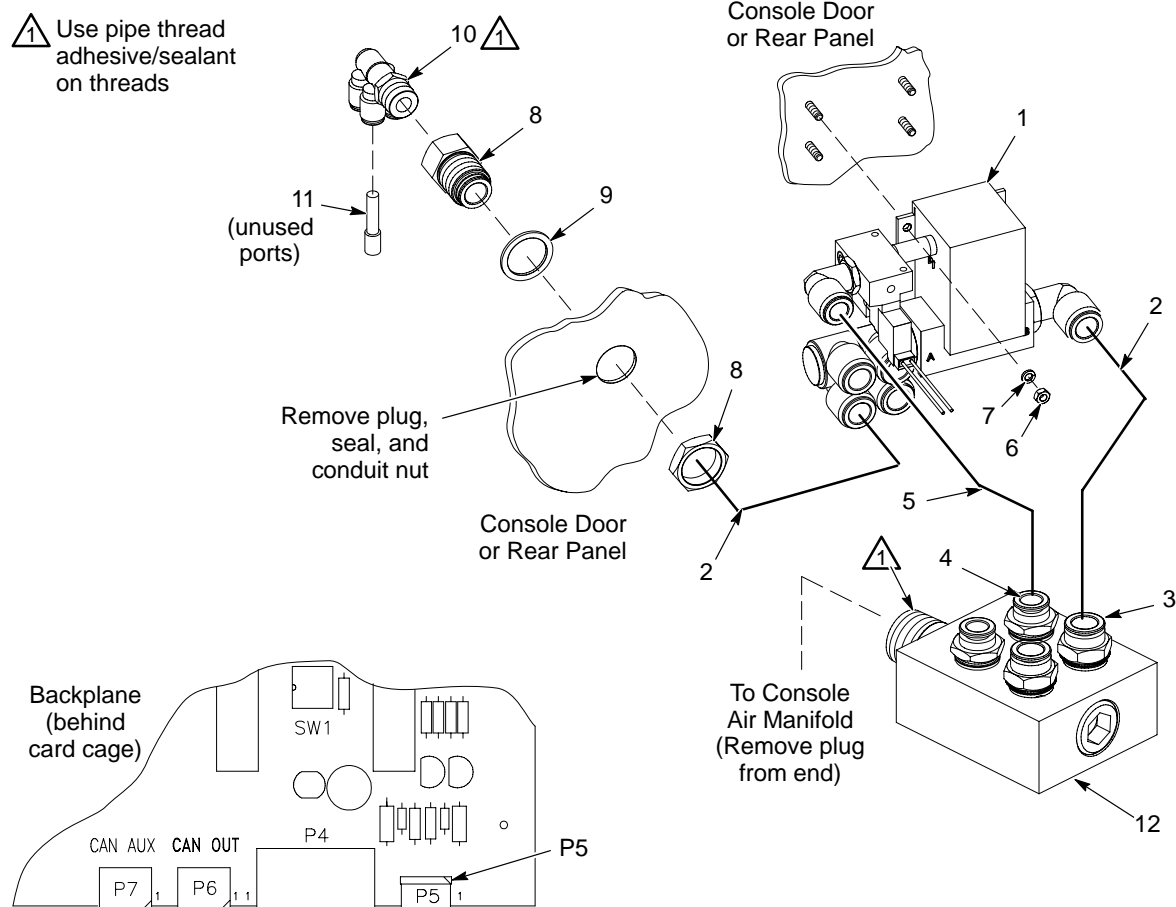


Figure 1 Kit Installation

- |  |                        |  |
|--|------------------------|--|
| 1. Valve assembly                              | 5. 10-mm tubing        | 9. Nylon washers                               |
| 2. 12-mm tubing                                | 6. M4 nuts             | 10. $\frac{3}{8}$ -in. RPT x (4) 6-mm fittings |
| 3. 12-mm tube x $\frac{1}{2}$ -in. NPT fitting | 7. M4 lock washers     | 11. 6-mm plugs                                 |
| 4. 10-mm tube x $\frac{1}{2}$ -in. NPT fitting | 8. Bulkhead connectors | 12. Purge air manifold                         |

Table 1 P5 Connections

Consoles and Kits	Number of Banks	Console A P5 Pins	Console B P5 Pins
One console, 1 single kit	1	1-2	-
One console, 1 dual kit	2	1-2, 3-4	-
Two consoles, 2 single kits	1	1-2	1-2
Two consoles, 2 single kits	2	1-2	3-4
Two consoles, 2 dual kits	4	1-2, 3-4	1-2, 3-4

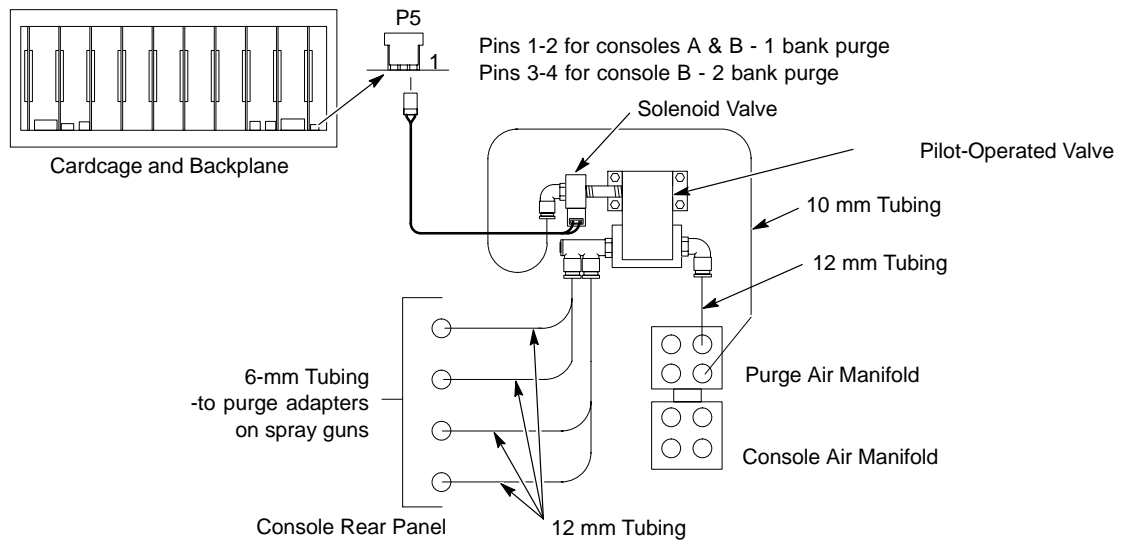
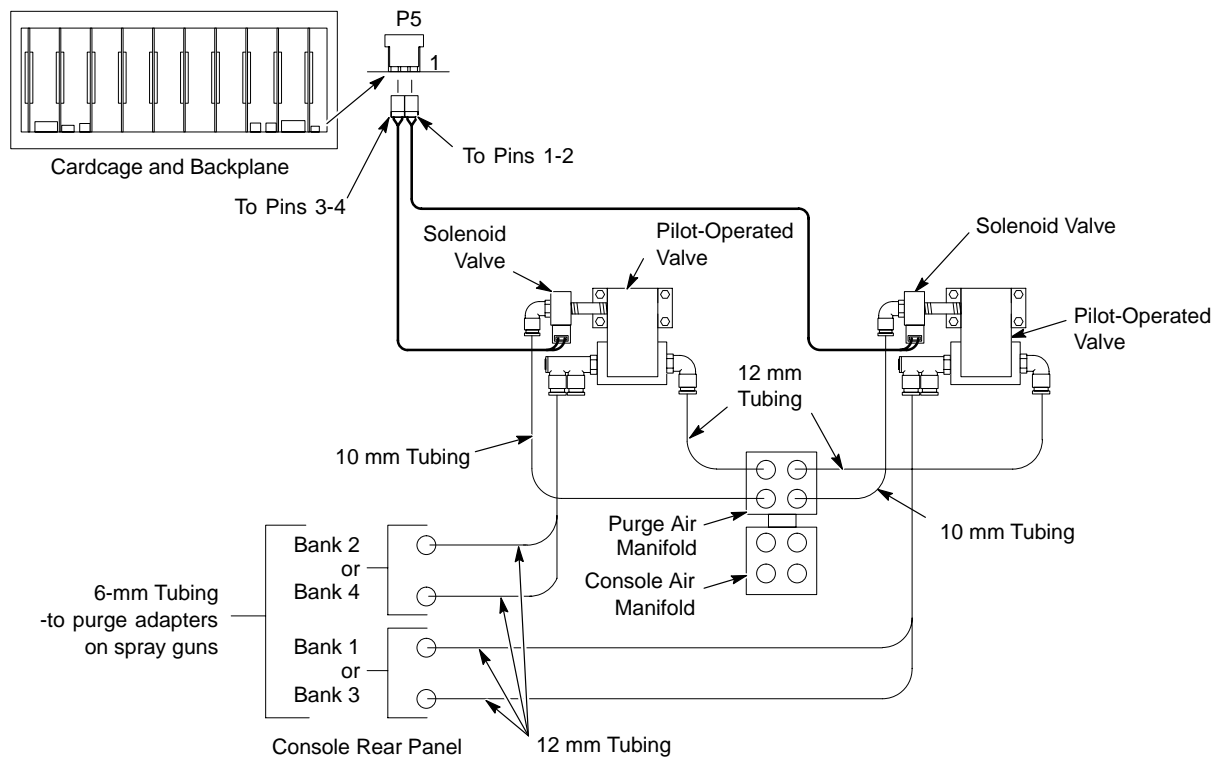
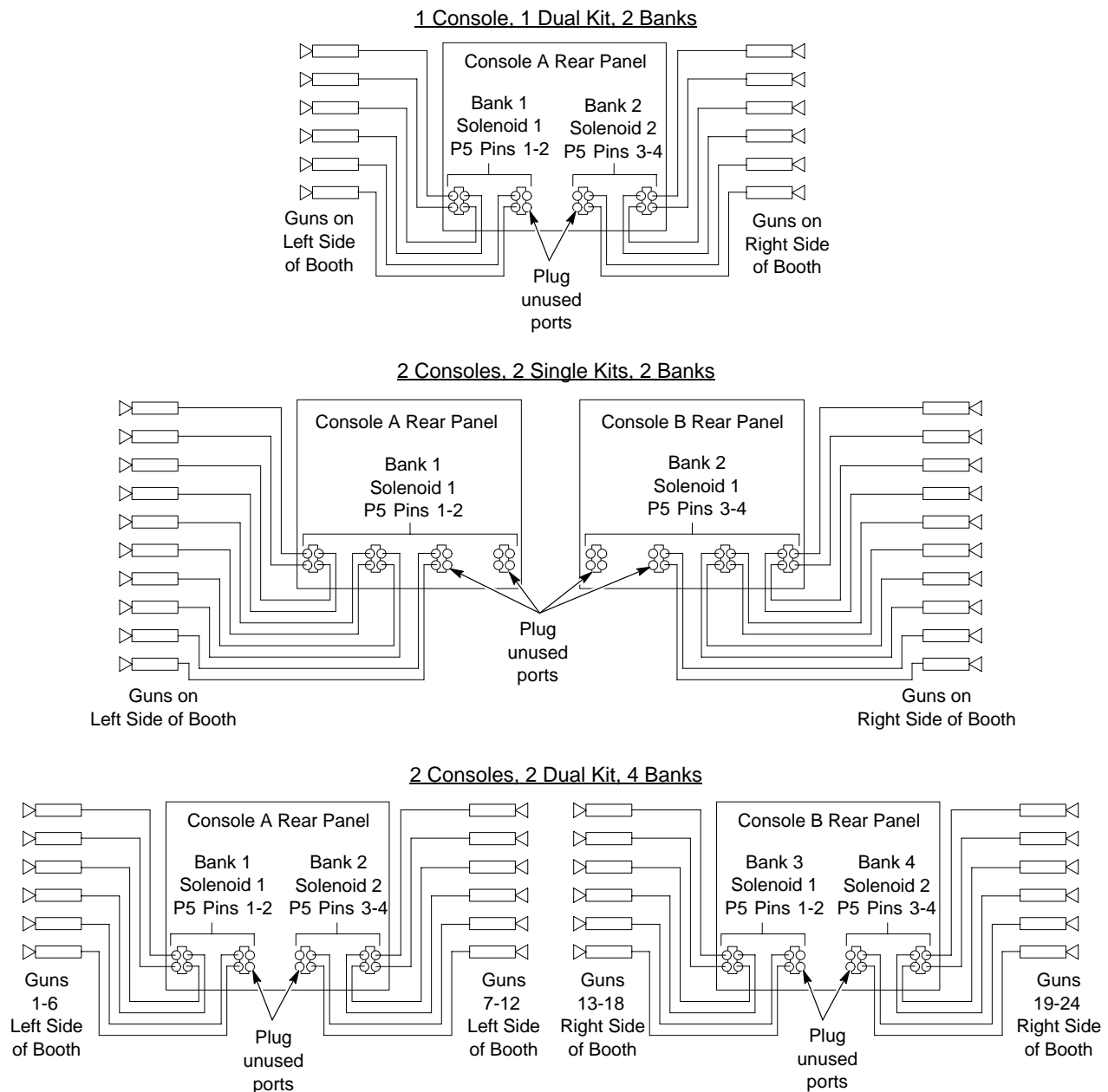
Single Kit SchematicDual Kit Schematic

Figure 2 Single and Dual Kit Schematics

## Configuration Examples



1401321A

Figure 3 Connection Diagrams

## Nozzle Purge Configuration and Operation

Configure nozzle purge for the desired number of banks, purge duration, and line gap. Refer to the *Configuration* and *Operation* sections of your iControl manual for information, or touch the Help button on the operator interface.

## Parts

To order parts, contact the Nordson Finishing Customer Support Center at (800) 433-9319 or your local Nordson representative.

See Figure 4.

Item	Part	Description	Quantity 1035665	Quantity 1035666	Note
-	1035665	KIT, purge, single, controller	1		
-	1035666	KIT, purge, dual, controller		1	
1	1035736	• VALVE, $\frac{3}{4}$ in. I/O, air operated, with mounting bracket	1	2	
2	1036034	• VALVE, solenoid, 3-way, sub-base, with connector	1	2	
3	973002	• NIPPLE, steel, schedule 40, $\frac{1}{8}$ in. NPT x 1.50 in. long	1	2	
4	973483	• PLUG, pipe, socket, $\frac{1}{8}$ in. NPT, steel	1	2	
5	973399	• BUSHING, pipe, hydraulic, $\frac{3}{4}$ x $\frac{1}{2}$ in. NPT, steel, zinc	2	4	
6	972240	• ELBOW, male, 12 mm tube x $\frac{1}{2}$ in. unithread	1	2	
7	1035732	• FITTING, $\frac{1}{2}$ in. RPT x (4) 12 mm tube	1	2	
8	183418	• PLUG, 12 mm, tube	2	2	
9	1035735	• ELBOW, male, 10 mm tube x $\frac{1}{8}$ in. unithread	1	2	
10	900481	• ADHESIVE, pipe/thread/hydraulic sealant	AR	AR	
11	971103	• CONNECTOR, male, 10 mm tube x $\frac{1}{2}$ in. unithread	1	2	
12	971106	• CONNECTOR, male, 12 mm tube x $\frac{1}{2}$ in. unithread	1	2	
13	1035734	• CONNECTOR, bulkhead, 12 mm tube x $\frac{3}{8}$ in. RPT	4	4	
14	1035731	• FITTING, $\frac{3}{8}$ in. RPT x (4) 6 mm tube	4	4	
15	183804	• PLUG, 6 mm tubing	16	16	
16	1035767	• WASHER, nylon, 1.125 x 0.875 x 0.062 in.	4	4	
17	984715	• NUT, hex, M4, steel, zinc	4	8	
18	983403	• WASHER, lock, split, M4, steel, zinc	4	8	
19	973442	• PLUG, pipe, socket, flush, $\frac{3}{4}$ in. NPT	1	1	
20	973431	• PLUG, pipe, socket, standard, $\frac{1}{2}$ in. NPT	2	-	
21	973103	• NIPPLE, steel, sch 40, $\frac{3}{4}$ in. NPT, 1.37 in.	1	1	
NS	226690	• TUBING, polyurethane, 12/8 mm, blue	AR	AR	A
NS	900740	• TUBING, polyurethane, 10/6.5-7 mm, blue	AR	AR	B
<p>NOTE A: Order in increments of one foot. 8 ft shipped with single kit, 16 ft. with dual kit.</p> <p>B: Order in increments of one foot. 4 ft shipped with single kit, 8 ft with dual kit.</p> <p>AR: As Required</p> <p>NS: Not Shown</p>					

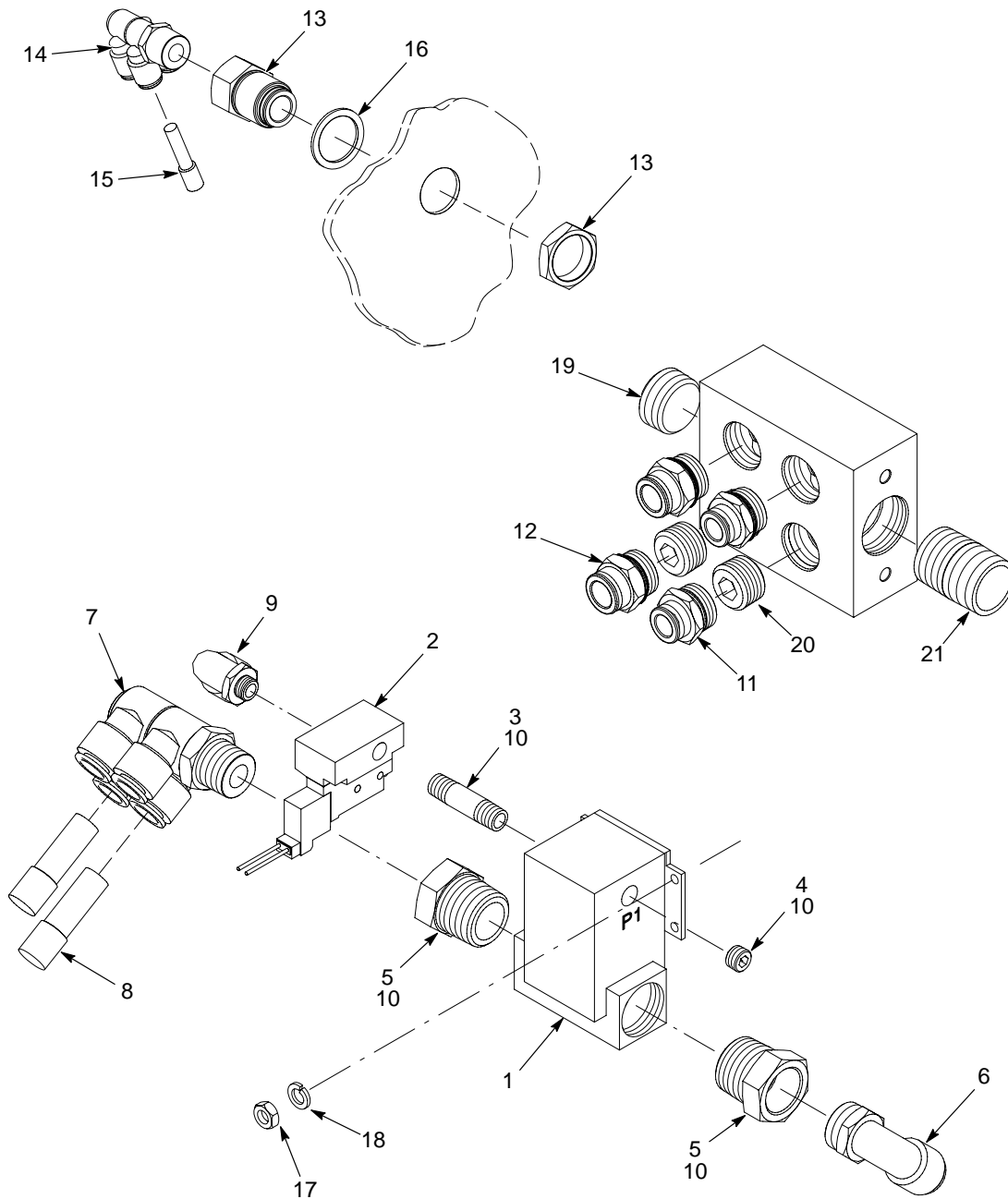


Figure 4 Purge Kit Parts

Issued 11/06

Original copyright date 2003. iControl, Nordson, the Nordson logo, and Versa-Spray are registered trademarks of Nordson Corporation.