

iControl™ Flow-Rate Air Boost Kit

Description

The iControl Flow-Rate Air Boost kit adds gun air flow to flow-rate air to increase the flow and pressure output of the digital flow modules for guns spraying porcelain enamel (PE) powders.

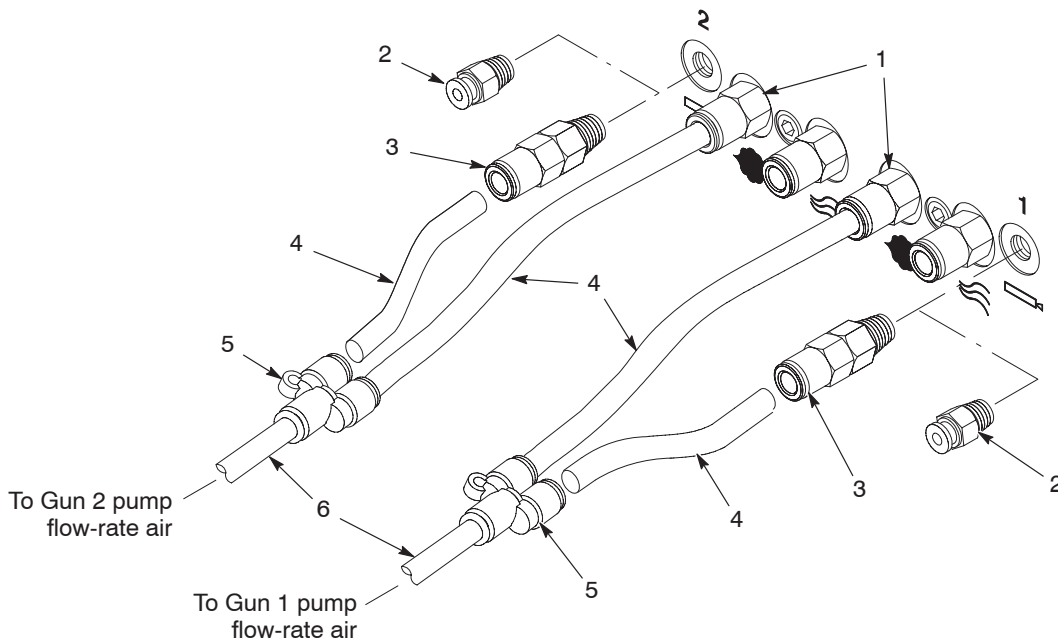
The kit consists of the fittings required to connect the gun air output to the flow-rate air output. One kit will provide connections for two PE powder spray guns.

NOTE: With this kit installed, flow-rate air flow is increased by approximately 3.36 m³/hr (2 scfm). This means that actual air flow will always be 2 scfm higher than the flow-rate setting, and will never be below 2 scfm. For example, with the flow-rate air flow set to 0.85 m³/hr (0.5 scfm), the actual output is 4.20 m³/hr (2.5 scfm).

Installation

See Figure 1.

1. Remove the standard gun air check valves (2) and replace them with the orifice and check valve assemblies (3) included in the kit for each gun.
2. Install 8-mm air tubing (4) between the flow-rate air fittings (1), the orifice and check valve assemblies (3) from the kit, and the tees (5) from the kit, as shown.
3. Connect the existing flow-rate air tubing (6) from the pump to the tee.



1401219A

Figure 1 Kit Installation

- | | | |
|--|---|--------------------------------|
| 1. Flow-rate air fittings | 3. Orifice/check valve assemblies (kit) | 5. Tee (kit) |
| 2. Standard gun air check valves (removed) | 4. 8-mm tubing (added) | 6. Flow-rate air tubing (8 mm) |

Kit Parts

Part	Description	Quantity	Note
1039886	KIT, boost, iControl	1	
1039889	<ul style="list-style-type: none">ORIFICE, 0.041 in., 1/8 in. NPT x 1/8 in. NPT	2	
1030873	<ul style="list-style-type: none">VALVE, check, M8 tube x 1/8 in. R , M input	2	
1039900	<ul style="list-style-type: none">UNION, Y, 8 mm tube x 8 mm tube x 8 mm tube	2	

Issued 4/03

Original copyright date 2003. Nordson and the Nordson logo are registered trademarks of Nordson Corporation.

iControl is a trademark of Nordson.