

CleanSpray® II Extension Assembly

Description

See Figure 1.

The CleanSpray II extension assembly allows the CleanSpray and CleanSpray II gun to be mounted up to 457 mm (18 in.) away from the lacquer spray gun. Used with one of the three optional bracket assemblies (6, 7, or 8), the extension assembly can be positioned to spray directly onto the lacquer spray nozzle.

The extension assembly includes an adapter assembly and nozzle nut (2), an 18-in. stainless steel tube (3), and an extension check valve (4). The tube may be cut or coiled to any length or shape. Nozzles (5) must be ordered separately.

NOTE: Contact your Nordson Corporation representative to order the correct nozzle for your application.

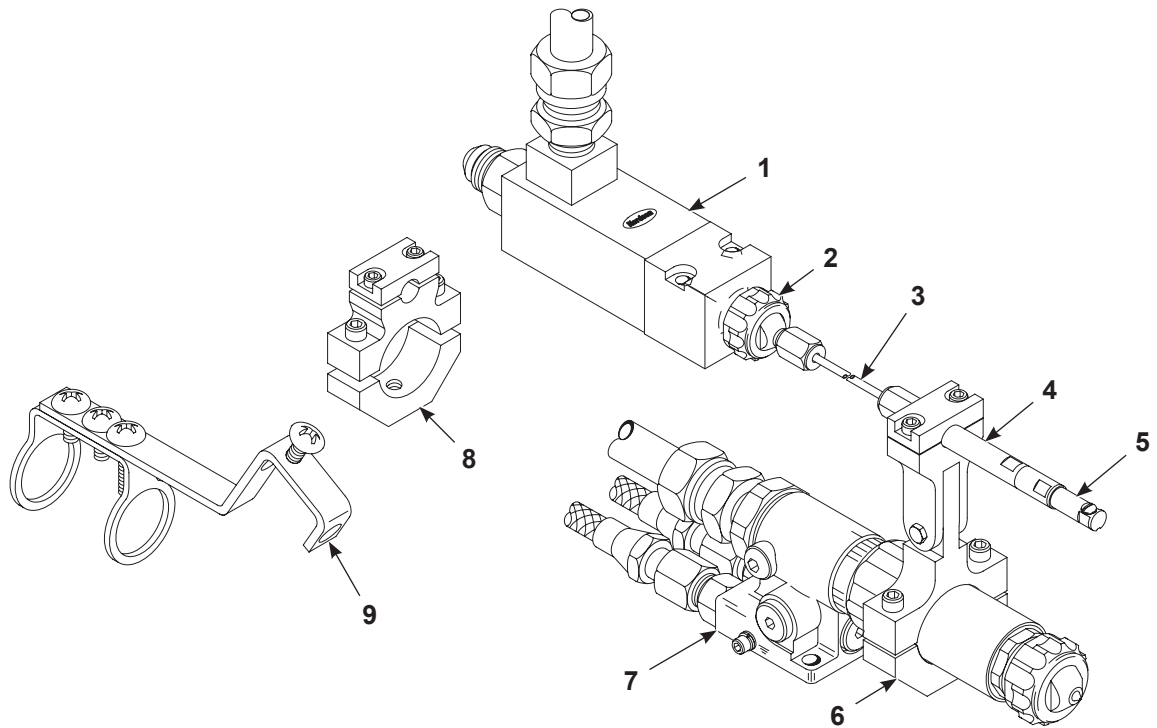


Figure 1 CleanSpray II Extension Assembly and Brackets

- | | | |
|------------------------------------|--------------------------------|-------------------------------|
| 1. CleanSpray II gun | 4. Extension check valve | 7. Laquer spray gun |
| 2. Adapter assembly and nozzle nut | 5. Extension nozzle (optional) | 8. Bracket and strap assembly |
| 3. Stainless steel tube | 6. Adjustable mounting bracket | 9. Fixed mounting bracket |

Mounting Brackets

See Figure 1.

Three mounting brackets are available for the CleanSpray II extension assembly. The brackets are designed to mount on the lacquer spray gun. Each bracket must be ordered separately. Refer to Parts for ordering information.

Adjustable Mounting Bracket

The adjustable mounting bracket (6) allows you to set the angle and distance of the extension nozzle (5) from the lacquer spray gun nozzle. This bracket can be used on A7A, A10A, A14A, and A20A extended guns, and on MEG guns.

Fixed Mounting Bracket

The fixed mounting bracket (7) aligns the CleanSpray II extension assembly parallel to the lacquer spray gun with a 7/8-in. distance between the nozzles. This bracket can be used on A20A extended and MEG guns.

Bracket and Strap Assembly

The bracket and strap assembly (8) aligns the CleanSpray II extension assembly on a 30° angle, with the extension nozzle 0.75 in. from the lacquer spray gun nozzle. This bracket is used on MEG and MEG II guns.

Installation



WARNING: Allow only qualified personnel to perform the following tasks. Follow the safety instructions in this document and all other related documentation.

1. Install the mounting bracket on the spray gun, then install the extension check valve and nozzle in the mounting bracket.
2. Size and shape the tube assembly.
3. Install the adapter assembly on the CleanSpray gun.
4. Connect the tube to the adapter and check valve extension.

NOTE: Refer to the CleanSpray gun manual for gun mounting instructions.

Extension Check Valve, Nozzle, and Bracket Installation

Adjustable Mounting Bracket

See Figure 2.

1. Loosen the #10-32 socket-head screws (5) and gun strap (8).

NOTE: If installing the mounting bracket on an A7A, A10A, or A14A extended, use the flat-head screws (7) to install the two-piece adapters (6) into the mounting bracket. The flat-head screws and adapters must be ordered separately.

2. Install the spray gun (13) into the mounting bracket (1) and tighten the socket-head screws.
3. Install a nozzle (10) on the extension check valve (9).
4. Loosen the #6-32 socket-head screws (3) and extension strap (2).
5. Slide the extension check valve into the mounting bracket.
6. Loosen the swivel screw (4).
7. Tilt the mounting bracket until the extension nozzle is approximately 25.4 mm (1 in.) away from the spray gun nozzle. The cleaning spray should hit the spray gun nozzle approximately 1 mm (0.040 in.) back from the tip.
8. Tighten the #6-32 socket-head screws (3) to secure the extension check valve in place.
9. If you are using a CleanSleeve cover (11), install it on the spray gun. You may need to modify the cover slightly to fit it on the gun.

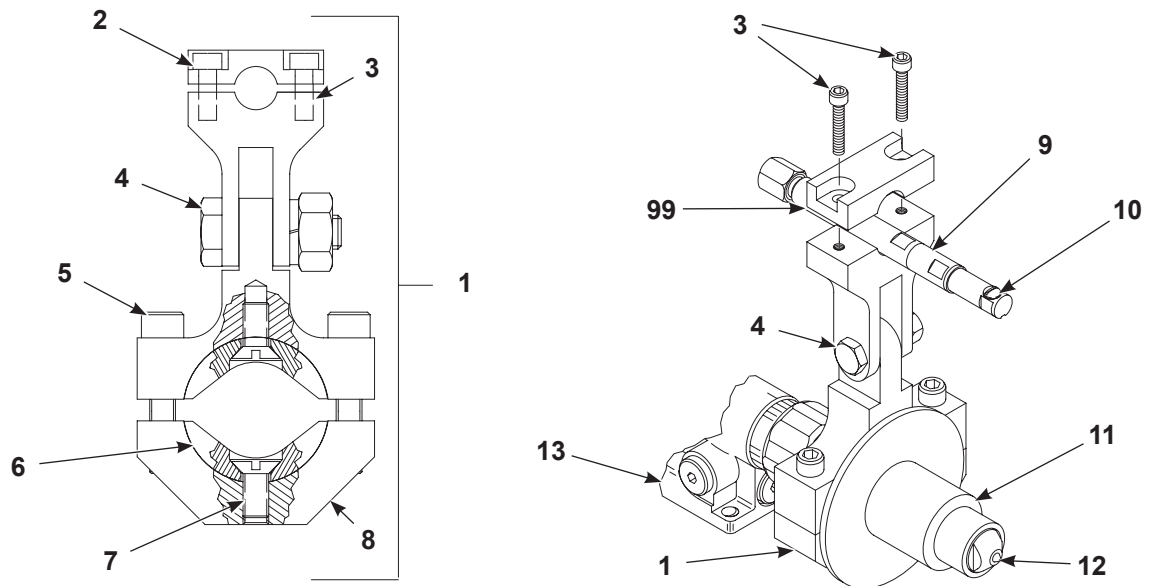


Figure 2 Adjustable Bracket, Check Valve, and Nozzle Installation (MEG Gun Installation Shown)

- | | | |
|------------------------------|--------------------------|-----------------------|
| 1. Mounting bracket | 6. Two-piece adapters | 10. Extension nozzle |
| 2. Extension strap | 7. Flat-head screws | 11. CleanSleeve cover |
| 3. #6-32 socket head screws | 8. Gun strap | 12. Spray gun nozzle |
| 4. Swivel screw | 9. Extension check valve | 13. Spray gun |
| 5. #10-32 socket head screws | | 1. |

Fixed Mounting Bracket

See Figure 3.

1. Loosen the #10-32 socket-head screws (4) and gun strap (5).
2. Install the spray gun (10) into the mounting bracket (1) and tighten the socket-head screws.
3. Install a nozzle (7) on the extension check valve (6).
4. Loosen the #6-32 socket-head screws (3) and extension strap (2).
5. Slide the extension check valve into the mounting bracket.
6. Adjust the extension check valve position so that the cleaning spray hits the spray gun nozzle (9) approximately 1 mm (0.040 in.) behind the tip.
7. Tighten the cap screws (3) to secure the extension check valve.
8. If you are using a CleanSleeve cover (8), install it on the spray gun. You may need to modify the cover slightly to fit it on the gun.

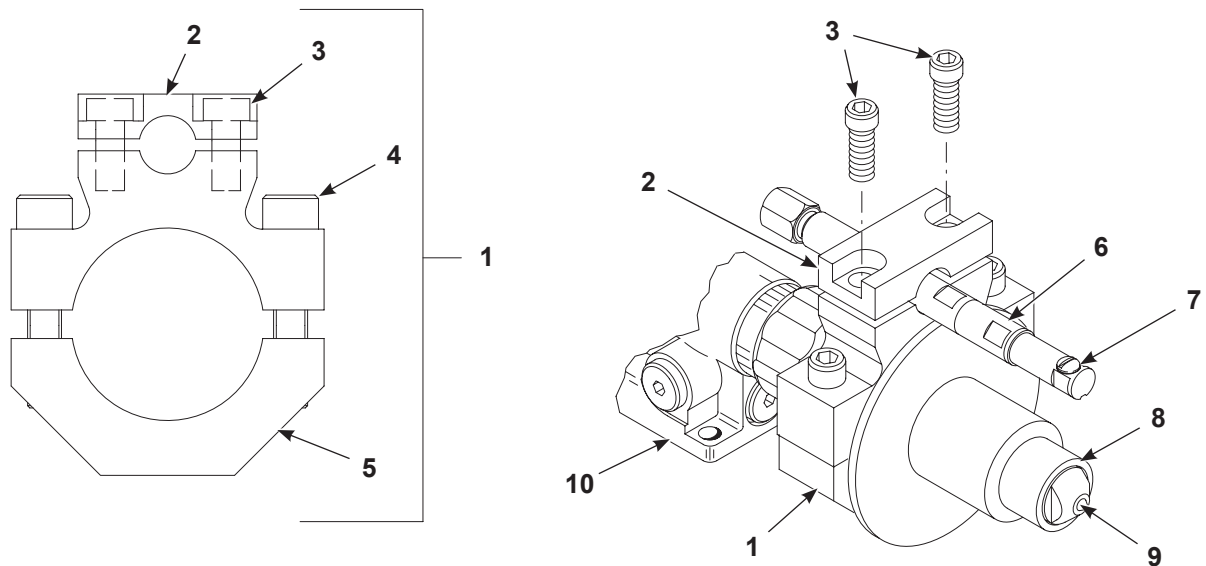


Figure 3 Fixed Mounting Bracket, Check Valve, and Nozzle Installation (MEG Gun Installation Shown)

- | | | |
|------------------------------|--------------------------|----------------------|
| 1. Mounting bracket | 5. Gun strap | 8. CleanSleeve cover |
| 2. Extension strap | 6. Extension check valve | 9. Spray gun nozzle |
| 3. #6-32 socket head screws | 7. Extension nozzle | 10. Spray gun |
| 4. #10-32 socket head screws | | |

Bucket and Strap Assembly

See Figure 4.

1. 1. Install the bracket and strap assembly (2) on the MEG or MEG II spray gun (7). Refer to the *Repair* procedures in the appropriate gun manual for gun disassembly procedures.
2. Tighten the screw (6) to hold the bracket in position on the spray gun.
3. Install a nozzle (4) on the end of the extension check valve (3).
4. Loosen the screw (1).
5. Slide the extension check valve through the two holes in the bracket.
6. Adjust the extension check valve position so the extension nozzle is 0.75 in. from the spray gun nozzle (5) and oriented so the cleaning spray hits the spray gun nozzle approximately 1 mm (0.040 in.) behind the tip.
7. Tighten the screw to hold the extension check valve in position.
8. If you are using a CleanSleeve cover, install it on the spray gun. You may need to modify the cover slightly to fit it on the gun.

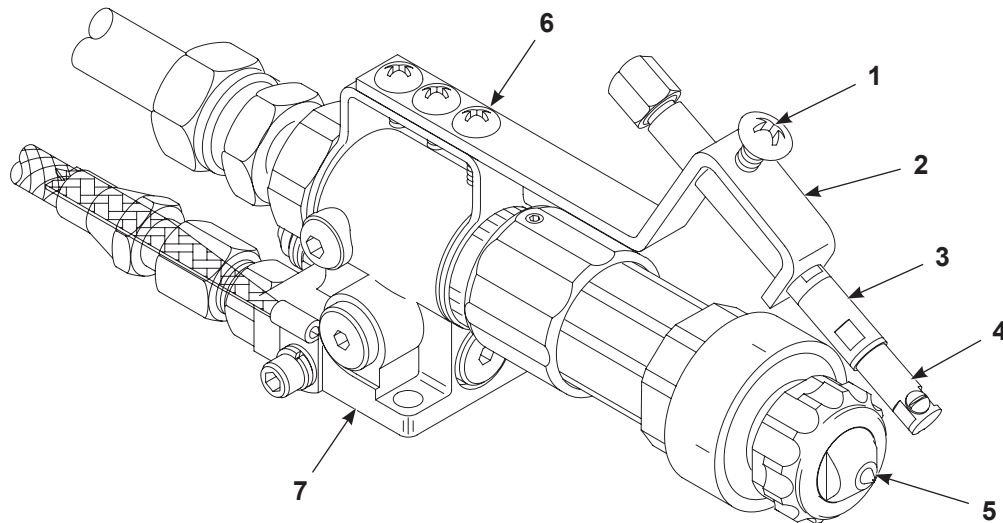


Figure 4 Bracket and Strap Assembly, Check Valve, and Nozzle Installation on MEG Gun

- | | | |
|-------------------------------|---------------------|--------------|
| 1. Screw | 4. Nozzle | 6. Screw |
| 2. Bracket and strap assembly | 5. Spray gun nozzle | 7. Spray gun |
| 3. Extension check valve | | |

Tube Sizing and Shaping

The 18-in. stainless steel tube can be cut, coiled, bent, and positioned in any way to connect the CleanSpray gun to the check valve.

- Calculate the length of tube required to lead from the CleanSpray gun to the check valve and cut the tube to the proper length with a tube cutter.
- Use an 1/8-in. diameter tubing bender to bend the tube.
- Shape and install the tube to minimize or avoid air traps.

Tube Installation

See Figure 5.

1. Insert the adapter assembly (3) into the nozzle nut (2).
2. Thread the nozzle nut onto the CleanSpray gun (1).
3. Remove the tube nut (4) and ferrule (5) from the adapter assembly.
4. Slide the tube nut and ferrule onto the CleanSpray end of the tube (6) leaving a small portion of the tube protruding from the ferrule. Pull the tube nut over the ferrule.
5. Hold the tube nut and ferrule in place and push the tube into the end of the adapter until it bottoms out.
6. Thread the tube nut onto the adapter and then use a wrench to tighten the nut. This will cause the ferrule to crimp and lock the tube in place.
7. Repeat steps 4 through 6 to connect the tube to the extension check valve (7). When tightening the tube nut, place a wrench on the extension check valve flats to prevent it from turning in the bracket.

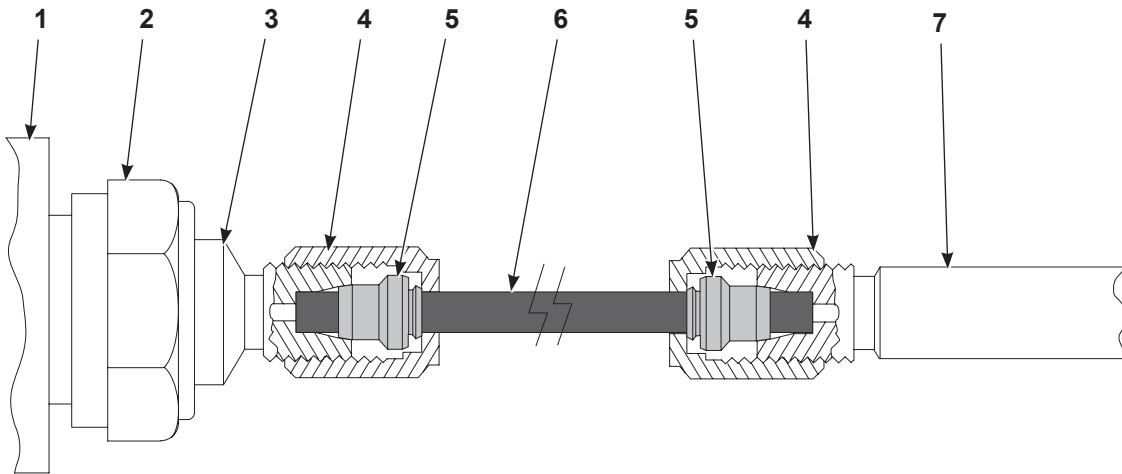


Figure 5 Tube Installation

- | | | |
|---------------------|-------------|--------------------------|
| 1. CleanSpray gun | 4. Tube nut | 6. Tube |
| 2. Nozzle nut | 5. Ferrule | 7. Extension check valve |
| 3. Adapter assembly | | |

Parts

To order parts, call the Nordson Customer Service Center or your local Nordson representative.

CleanSpray II Extension Assembly

See Figure 6.

Item	Part	Description	Quantity	Note
--	323403	EXTENSION ASSEMBLY, CleanSpray II	1	
1	323429	• ADAPTER ASSEMBLY	1	
2	971752	• • NUT, tube, hydraulic, 1/8-in. tube, with ferrule	1	
3	237401	• NUT, nozzle	1	
4	323445	• TUBE, stainless steel, 1/8-in. OD x 18-in. long	1	
5	330239	• • EXTENSION, check valve spray, CleanSpray	1	
6	971752	• • NUT, tube, hydraulic, 1/8-in. tube, with ferrule	1	
7	983196	• • WASHER, flat, 0.190 x 0.281 x 0.031 in., nylon	1	
8	-----	• TUBE LINING NOZZLE	1	A

NOTE: A. Nozzles must be ordered separately. Contact your Nordson representative for nozzle information.

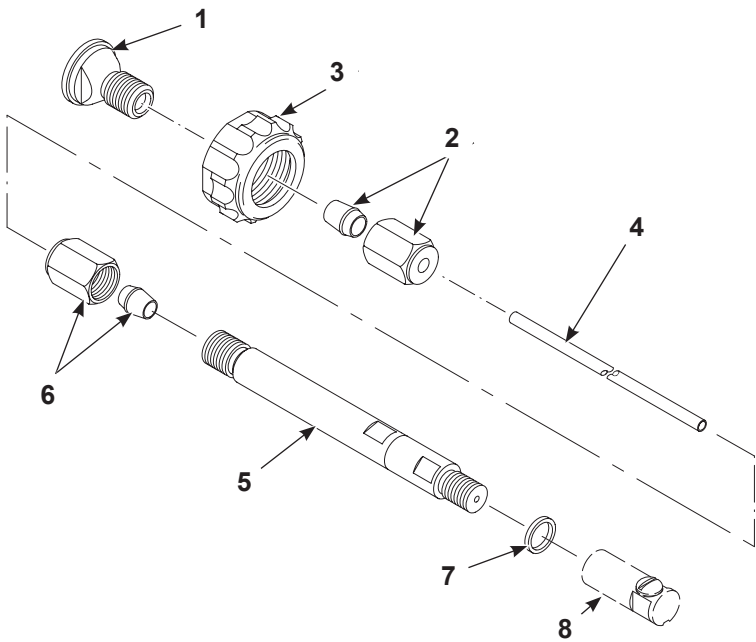


Figure 6 Extension Assembly Parts

Adjustable Bracket Assembly for Extension Assemblies

See Figure 7. Use this bracket with the *CleanSpray II Extension Assembly* on page 7.

Item	Part	Description	Quantity	Note
--	330243	BRACKET ASSEMBLY, adjustable	1	
1	982760	• CAPSCREW, socket head, #6-32 x 0.375 in.	2	
2	-----	• STRAP, bracket, CleanSpray II	1	
3	-----	• ARM, mounting, CleanSpray II	1	
4	981129	• SCREW, socket head, #10-32 x 1 in.	2	
5	984130	• NUT, hex, heavy, 1/4-20, steel	1	
6	983140	• WASHER, lock, E, split, 1/4 in.	1	
7	981564	• SCREW, hex head, 1/4-20 x 0.875 in.	1	
8	-----	• ARM, mounting, A20A	1	
9	-----	• STRAP, bracket, A20A	1	
10	981122	SCREW, flathead, #10-32, x 0.437 in.	2	A
11	141476	ADAPTER, A7A/A10A/A14A	2	A

NOTE: A. Order these items if you are installing an A7A, A10A, or A14A extended spray gun. These items must be ordered separately.

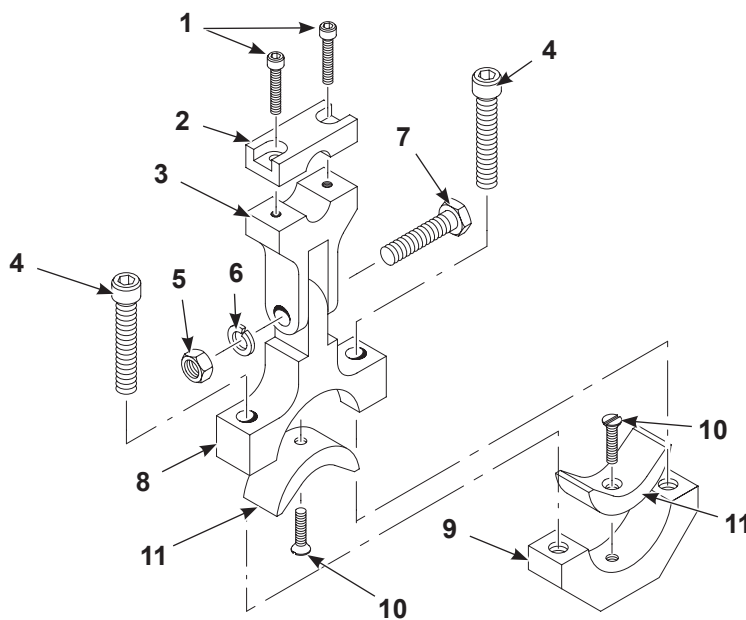


Figure 7 Adjustable Bracket Assembly for Extension Assemblies

Fixed Bracket Assembly

See Figure 8.

Item	Part	Description	Quantity	Note
--	337752	BRACKET ASSEMBLY, CleanSpray II fixed	1	
1	982760	• SCREW, socket, #6-32 x 0.375 in., zinc	2	
2	-----	• STRAP, bracket, CleanSpray II	1	
3	-----	• ARM, mounting, CleanSpray II	1	
4	981129	• SCREW, socket, #10-32 x 1.00 in., zinc	2	
5	-----	• STRAP, bracket, A20A	1	

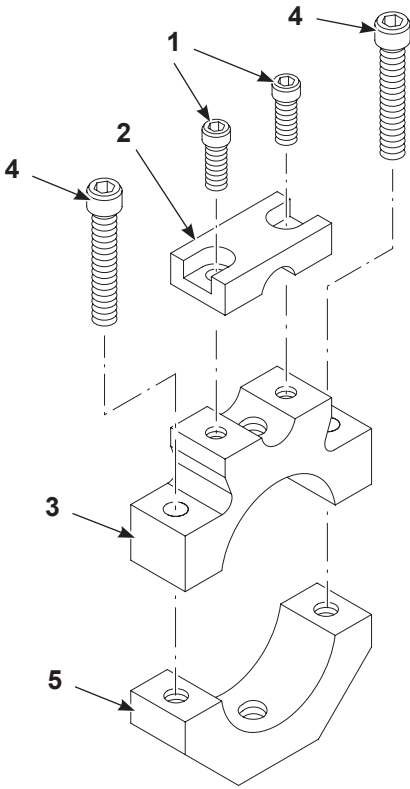


Figure 8 Fixed Bracket Assembly Parts

Bracket and Strap Assembly

See Figure 9.

Item	Part	Description	Quantity	Note
--	1015284	BRACKET AND STRAP ASSEMBLY, CleanSpray, MEG	1	
1	1015328	• SCREW, button, socket, M5 x 0.8 x 8 mm, stainless steel	2	
2	1015325	• SCREW, button, socket, M5 x 0.8 x 6 mm, stainless steel	1	
3	-----	• STRAP, CleanSpray, MEG	1	
4	-----	• BRACKET, CleanSpray, MEG	2	

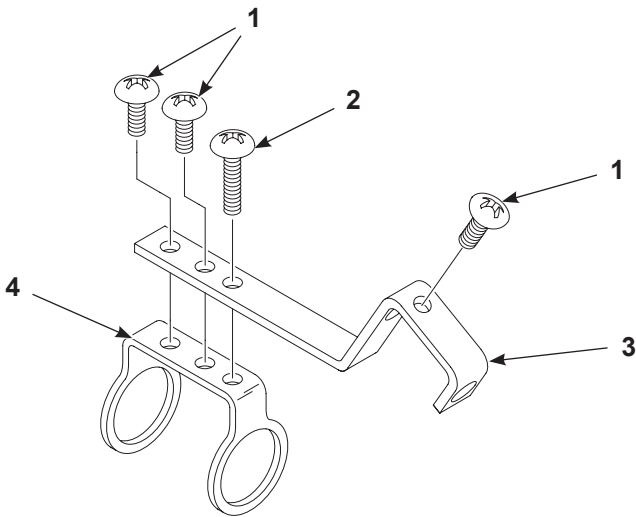


Figure 9 Bracket and Strap Assembly Parts

Barrel Clamp Bracket Assembly

See Figure 10.

Item	Part	Description	Quantity	Note
--	1615067	BRACKET ASSEMBLY, CleanSpray, barrel clamp	1	
1	-----	• ARM,MOUNTING,CSXT	1	
2	-----	• SCREW, hex,1/4-20X.875, , stainless steel	1	
3	-----	• SCREW, socket,10-32X1.000, stainless steel	2	
4	-----	• STRAP, bracket, A20A	1	
5	-----	• ARM, mounting, A20A	1	
6	-----	• NUT, hex, 1/4-20, stainless steel	1	
7	714241	• WASHER, lock,.250, stainless steel	1	
8	-----	• STRAP, bracket, Cleanspray	1	
9	-----	• SCREW, socket, cap, 6-32X.375, stainless steel	2	

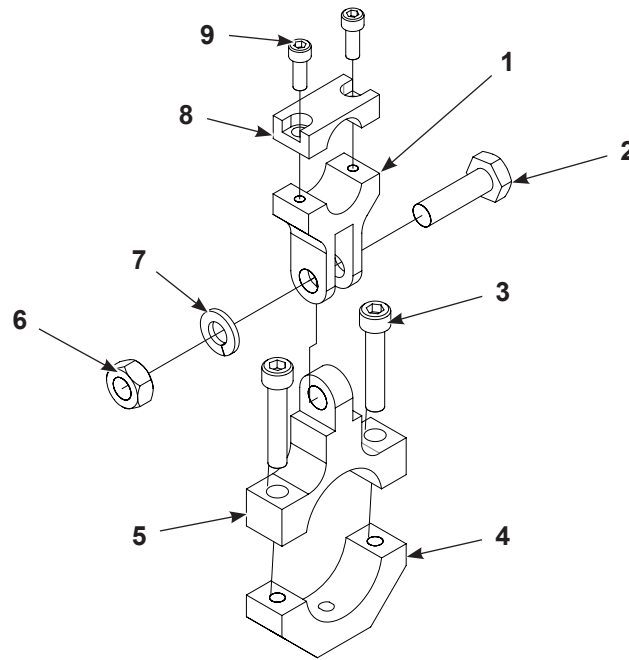


Figure 10 Bracket and Strap Assembly Parts

Issued 1/22

Original copyright date 1999. CleanSleeve, CleanSpray, Nordson and the Nordson logo are registered trademarks of Nordson Corporation.

All other trademarks are the property of their respective owners.