

Three-Way Ball Valve, Stainless Steel

Specifications

Maximum working pressure	207 bar (3000 psi)
Maximum working temperature	232° C (450° F)

Ball Valve Repair

See Figure 1.

Disassembly

1. Remove the socket-head screw (2) from the handle (1). Remove the handle from the ball valve.
2. Remove the flat spring (12) from the stem (3).
3. Unscrew the stem gland nut (4) from the housing (5). Pull the stem (3) out of the valve body.
4. Remove the thrust washer (10) and the stem packing (11).
5. Unscrew the body cap (6) from the housing.
6. Remove the ball (8) and the ball seats (9). Remove and discard the body seal (7).

Clean and inspect the valve parts. Replace any worn or damaged parts.

Assembly

1. Install new ball seats (9) in housing (5) and body cap (6).
2. Install new thrust washer (10) and stem packing (11) onto stem (3).
3. Install stem (3) into housing (5), and screw stem gland nut (4) finger tight. Turn stem to where the slot is vertical. Install ball (8) into housing, aligning the slot in the ball with the end of the stem.
4. Place body seal (7) into slot of housing (5). Make sure that the stem slot is vertical, then screw body cap (6) into housing (5).
5. Tighten body cap (6) to 55-60 ft-lb. (74.5-81 N·m) of force. Tighten gland nut (4) to 35-40 in-lb (3.9-4.5 N·m) of force.
6. Insert the flat spring (12) into the groove in the stem (3).
7. Install the handle (1) over the stem (3). Align the holes in the handle and stem. Install the socket-head screw (2) into the handle and tighten it securely.

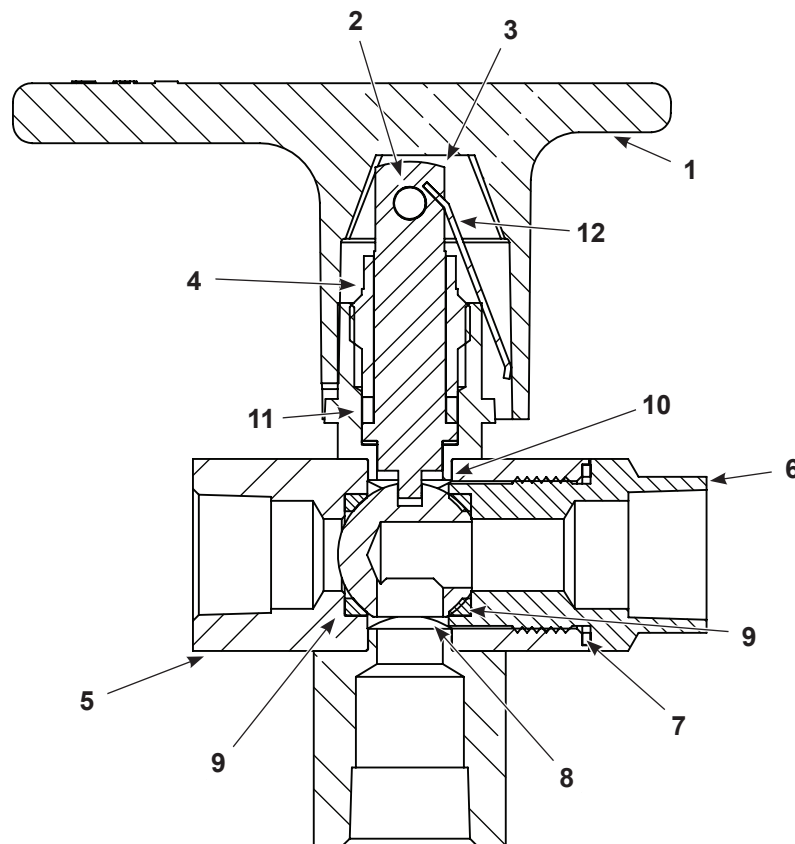


Figure 1 3-way Ball Valve Assembly

Parts

See Figure 1.

3-Way Ball Valve

Item	Part	Description	Quantity	Note
—	247673	VALVE, ball, 3-way, stainless steel	1	
1	1626321	• HANDLE, ball, valve, 2-way and 3-way	1	
2	1098342	• SCREW, SHCS, #8-32 x 0.875 in., 316 stainless steel	1	
3	750134	• STEM	1	
4	750045	• NUT, gland, stem	1	
5	1619395	• ASSEMBLY, housing, stainless steel, 3-way valve	1	
6	1619392	• BODY, stainless steel, cap	1	
7	750060	• SEAL, body	1	
8	247674	• BALL, 3-way	1	
9	1619391	• SEAT, ball	2	
10	750047	• WASHER, thrust, 0.343 x 0.500 x 0.020 in.	1	
11	750046	• PACKING, stem	1	
12	750048	• SPRING, flat, 1.125 x 0.218 OD x 0.026 in.	1	

Spare Parts

See Figure 1.

NOTE: Reassemble the valve hand-tight when replacing the seals with the following kit. Then, fully tighten the parts of the valve.

Item	Part	Description	Quantity	Note
—	1619397	SERVICE KIT, stainless steel valve, ball valve	1	
7	750060	• SEAL, body	1	
9	1619391	• SEAT, ball	2	
10	750047	• WASHER, thrust, 0.343 x 0.500 x 0.020 in.	1	
11	750046	• PACKING, stem	1	
12	750048	• SPRING, flat, 1.125 x 0.218 OD x 0.026 in.	1	

Issued 03/25

Original copyright date 2020. Nordson and the Nordson logo are registered trademarks of Nordson Corporation.

All other trademarks are the property of their respective owners.