

CanNeck™ Circulating Installation Kit



WARNING: Allow only qualified personnel to perform the following tasks. Follow the safety instructions in this document and all other related documentation.

Description

The CanNeck™ Circulating Installation Kit is used when upgrading from the non-circulating version of the ProBlue® Melter to the circulating version (Nordson part number 1509121).

Applicability of this Instruction Sheet

This instruction sheet provides only the information specific to the installation of the CanNeck Circulating Installation Kit.

For all other information required to install, set up, operate, and service the melter system, refer to the applicable product manuals.

Getting Started

- Refer to the installation guide provided with the melter (Nordson part number 1509121) for information about installation. When upgrading to the new recirculating unit, keep the regulator from the previous version:

Part Number	Description
1604839	REGULATOR, waxer

- Refer to this instruction sheet for information about installing the CanNeck Circulating Installation Kit.
- Refer to the operation section of the melter manual for information about operating the melter.

Installation



WARNING: System may be pressurized. Relieve pressures. Failure to observe this warning may result in serious injury or death.



WARNING: A regulator is not intended to be used as a shutoff device. When the regulator is not in use, the inlet supply should be turned off. As a safety precaution, a pressurized relief device should be installed downstream of the regulator.

See Figure 1.

1. Once the system has been de-pressurized, power off the melter.
2. Apply a thin uniform coating of lubrication to the regulator O-rings.
3. Thread the regulator, gauge, and filter into the recirculating manifold as shown.
4. Install the restrictor and seals on the restrictor holder, then install the holder in the recirculating manifold as shown.

*Includes restrictor, restrictor holder, and restrictor seal

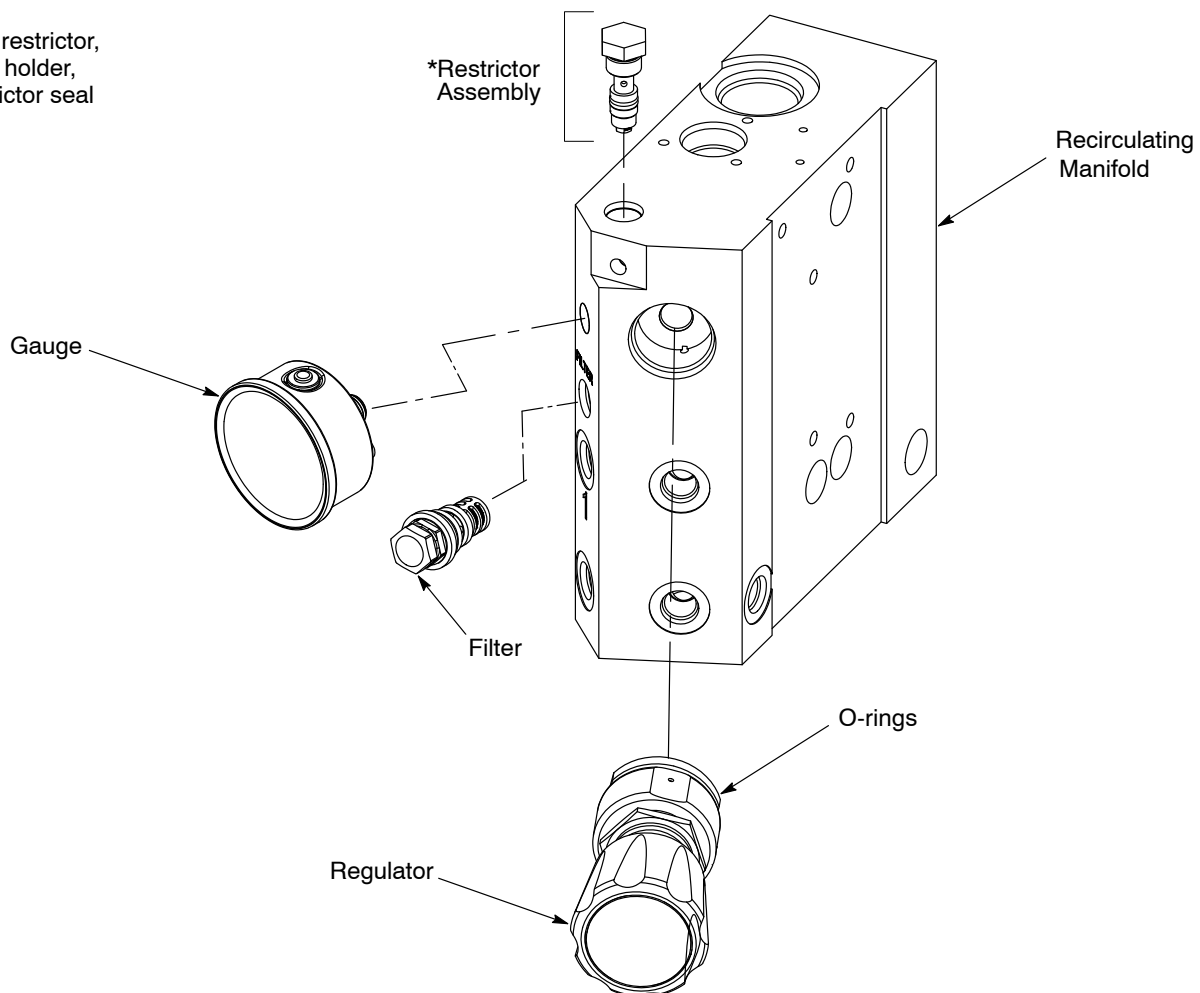


Figure 1 CanNeck Lubrication System Regulator Assembly

Parts

To order parts, call the Nordson Industrial Coating Customer Support Center at (800) 433-9319, or contact your local Nordson representative.

CanNeck Circulating Installation Kit

See Figure 2.

Item	Part	Part	Description	Quantity	Note
—	1611373	—	RESTRICTOR ACCESSORY GROUP, 200 mesh	1	
—	—	1611374	RESTRICTOR ACCESSORY GROUP, 100 mesh	1	
1	1618379	1618379	• ACCESSORY GROUP, mini-insert, M4, 0.008, carbide	1	
2	169623	169623	• HOLDER, restrictor, mini-insert	1	
3	1611376	1611376	• GAUGE, 0–100 psi, ¼ NPT, center back, 2.5 in.	1	
4	1007374	—	• FILTER, Saturn, 200 mesh, 5-filter pack	1	
	—	1007373	• FILTER, Saturn, 100 mesh, 5-filter pack	1	

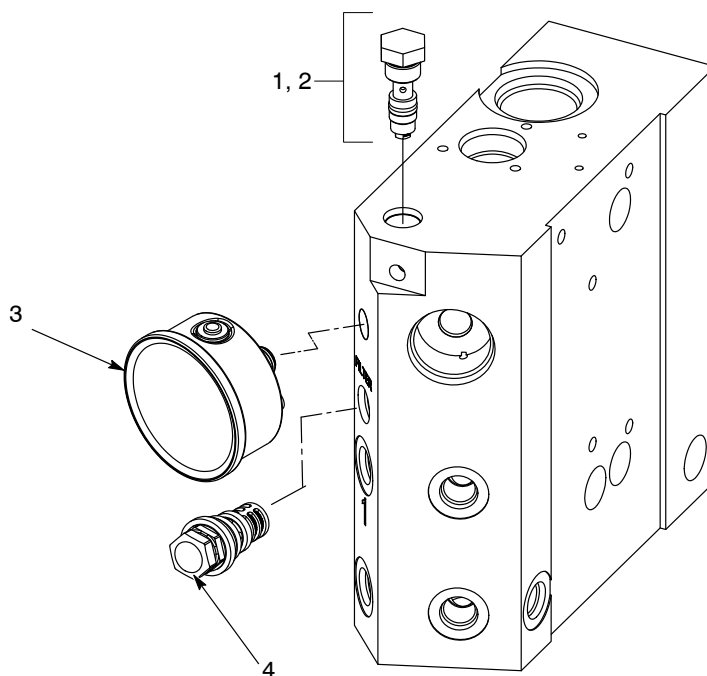


Figure 2 CanNeck Circulating Installation Kit

Restrictor Holder Assembly

See Figure 3.

The restrictor holder assembly is made up of the following parts:

Item	Part	Description	Quantity	Note
—	1618379	ACCESSORY GROUP, mini-insert, M4, 0.008, carbide	1	
1	122528	• RESTRICTOR, mini-insert, M4, 0.008 orifice	1	
1a	121709	• • SEAL, ring, M4	1	
2	940113	• O-RING, Viton, black, 0.313 x 0.438	1	
3	954028	• BACK-UP RING, single, 5/16 x 7/16	1	
4	945046	• O-RING, Viton, black, 5/16 tube	1	

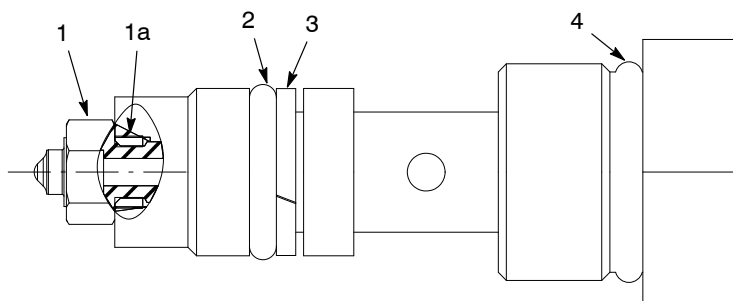


Figure 3 Restrictor Holder Assembly

Issued 08/19

Original copyright date 2017. Nordson and the Nordson logo are registered trademarks of Nordson Corporation.

CanNeck is a trademark of Nordson Corporation.

All other trademarks are the property of their respective owners.