

# Encore Can Lance Conversion Kit

This instruction sheet provides installation instructions and lists the equipment used to convert the Encore Automatic Powder Spray Gun to the can lance.

- 250, 300, 350-mm lance assemblies for Encore Automatic Powder Spray Gun
- 12 and 8 hole nozzles at 3, 5, and 7 degrees

In addition, a special powder feed hopper with a vibratory motor and agitator is available. It is designed especially for fluidizing the powders used for container coating. It is equipped with pump and mounting for up to nine feed pumps, two vent pumps, and two barbed inlet fittings for bulk feed tubing.

## Lance Installation



**WARNING:** Allow only qualified personnel to perform the following tasks. Follow the safety instructions in this document and all other related documentation.



**WARNING:** Turn power off to the gun before disassembly. Failure to do so could cause an extreme shock.

## Encore Gun Parts Removal

1. See Figure 1. Remove the spray gun nozzle nut and nozzle.
2. Remove the spray gun electrode support, powder tube, and hose connector assembly.

**NOTE:** Keep the seal from the front of the powder tubing to use with the can lance powder tubing.

Refer to Encore Automatic Powder Spray Guns manual for further instructions on disassembly.



Figure 1 Encore Automatic Spray Gun (shown with tube-mount gun)

- |                |                       |                   |
|----------------|-----------------------|-------------------|
| 1. Powder tube | C. Electrode assembly | E. Retainer nut   |
| A. Nozzle nut  | D. Seal               | F. Hose connector |
| B. Nozzle      |                       |                   |

## Lance Installation

See Figure 2.

1. Slide powder tubing assembly through the spray gun housing from the back of the gun until the powder tube assembly fitting bottoms out against the back of the gun.
2. Connect the electrode assembly to the powder tubing assembly using the seal with the tapered end sliding onto the electrode assembly.
3. Connect the adapter tube assembly onto the front of the gun and tighten by hand.
4. Reconnect hose connector assembly to the new powder tube assembly.

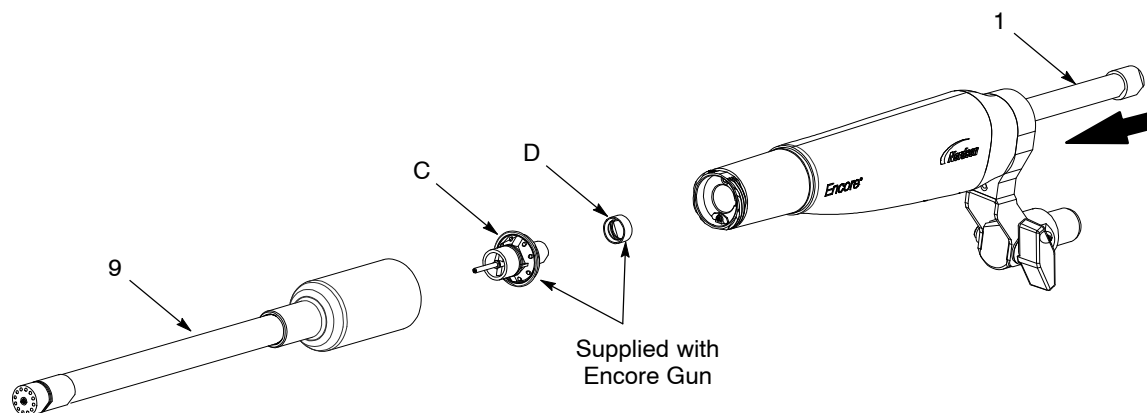


Figure 2 Encore Can Lance Conversion (shown with bar-mount gun)

- |                          |                       |
|--------------------------|-----------------------|
| 1. Powder tube assembly  | C. Electrode assembly |
| 9. Adapter tube assembly | D. Seal               |

## Parts

For parts and service, call the Nordson Finishing Customer Service Center at (800) 433-9319, or contact your Nordson representative.

### ***250 mm Lance Assembly***

See Figure 3.

Item	Part	Description	Quantity	Note
-----	1107518	KIT, Encore can lance conversion, 250mm	1	
1	1107517	• TUBE ASSEMBLY, powder	1	
2	1082930	• O-RING, silicone, 3mm ID x 1mm w	1	
3	1107475	• SLEEVE, contact	1	
4	1107473	• SLEEVE, 102mm ext, electrode	1	
6	1107476	• ELECTRODE, 250mm	1	
7	1107471	• SLEEVE, flared, electrode	1	
8	1107501	• O-RING, silicone, 4mm ID x 1mm w	1	
9	1107506	• TUBE ASSEMBLY, adapter, 250mm	1	
10	1107497	• NOZZLE, 20mm, 12/7-degree/2mm	1	

### ***300 mm Lance Assembly***

See Figure 3.

Item	Part	Description	Quantity	Note
-----	1107519	KIT, Encore can lance conversion, 250mm	1	
1	1107517	• TUBE ASSEMBLY, powder	1	
2	1082930	• O-RING, silicone, 3mm ID x 1mm w	1	
3	1107475	• SLEEVE, contact	1	
4	1107473	• SLEEVE, 102mm ext, electrode	1	
5	1107474	• SLEEVE, 50mm ext, electrode	1	
6	1107477	• ELECTRODE, 300mm	1	
7	1107471	• SLEEVE, flared, electrode	1	
8	1107501	• O-RING, silicone, 4mm ID x 1mm w	1	
9	1107507	• TUBE ASSEMBLY, adapter, 300mm	1	
10	1107497	• NOZZLE, 20mm, 12/7-degree/2mm	1	

## 350 mm Lance Assembly

See Figure 3.

Item	Part	Description	Quantity	Note
-----	1107520	KIT, Encore can lance conversion, 350mm	1	
1	1107517	• TUBE ASSEMBLY, powder	1	
2	1082930	• O-RING, silicone, 3mm ID x 1mm w	1	
3	1107475	• SLEEVE, contact	1	
4	1107473	• SLEEVE, 102mm ext, electrode	1	
5	1107474	• SLEEVE, 50mm ext, electrode	2	
6	1107478	• ELECTRODE, 350mm	1	
7	1107471	• SLEEVE, flared, electrode	1	
8	1107501	• O-RING, silicone, 4mm ID x 1mm w	1	
9	1107508	• TUBE ASSEMBLY, adapter, 350mm	1	
10	1107497	• NOZZLE, 20mm, 12/7-degree/2mm	1	

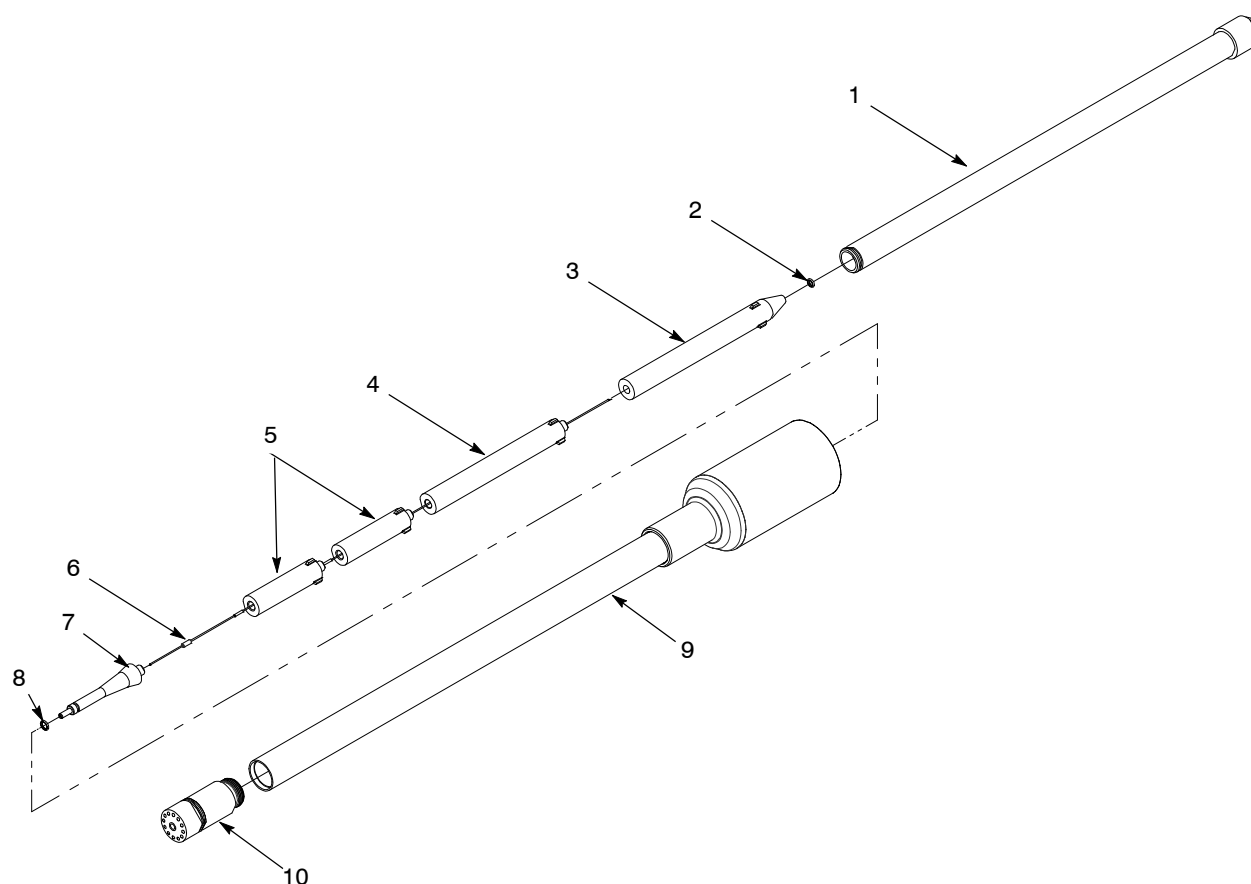


Figure 3 Encore Lance Conversion Kit

## Nozzles

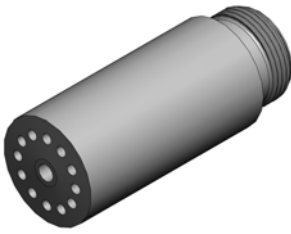
See Figure 4. Nozzles are marked with identification grooves as noted in the illustration.

Part	Description	Quantity	Note
1107509	KIT, nozzle, 20mm, 12/3-degree/2mm	1	
1107510	KIT, nozzle, 20mm, 12/5-degree/2mm	1	
1107511	KIT, nozzle, 20mm, 12/7-degree/2mm	1	
1107512	KIT, nozzle, 20mm, 8/5-degree/3mm	1	
1107513	KIT, nozzle, 20mm, 8/7-degree/3mm	1	
1107515	KIT, nozzle, 60 degree conical, 12/5-degree/2mm	1	

## Powder Feed Hopper

Part	Description	Note
1107668	HOPPER ASSEMBLY, NHR-25, 9-pump, with agitator	

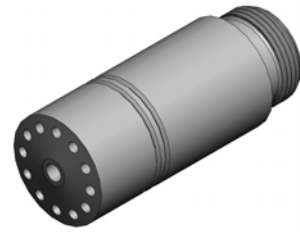
### **12-Hole Nozzles**



**3-Degree  
(No Groove)**

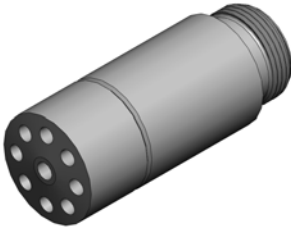


**5-Degree  
(One Groove)**



**7-Degree  
(Two Groove)**

### **8-Hole Nozzles**



**5-Degree  
(One Groove)**



**7-Degree  
(Two Groove)**

### **Conical Nozzle**



**12 Hole  
5-Degree  
(One Groove)**

Figure 4 Nozzles for Encore Can Lance

Issued 05/11

Original copyright date 2011. Encore, Nordson, and the Nordson logo are registered trademarks of Nordson Corporation.