

Ink-Dot Half-Liter Reservoir Adapter Kit

Installation



WARNING: Allow only qualified personnel to perform the following tasks. Follow the safety instructions in this document and all other related documentation.

Relieve fluid and air pressure to the Ink-Dot system before performing this procedure.

NOTE: Have petroleum jelly on hand to lubricate the O-rings.

1. See Figure 3. Remove the thumb screws (5) securing the shroud (6) to the manifold (1).
2. Perform the following:
 - a. Remove the set screws (7) securing the end cap (8) at the 1-liter ink bottle position.
 - b. Move the end cap to the 1/2-liter ink bottle position and secure it using the set screws.
3. Remove the existing siphon tube (9) and gasket (12) from the manifold (1).
4. Insert the gasket (4) into the manifold adapter (3).
5. Make sure that the O-ring groove on the manifold adapter (3) is clean. Lubricate the O-ring (2) with petroleum jelly and install it into the O-ring groove.
6. Install the manifold adapter (3) to the manifold (1) using the screws (11). Tighten the screws securely.
7. Lubricate the O-ring (10) on the new siphon rod (9) with petroleum jelly. Install the siphon rod to the manifold and tighten hand tight.

NOTE: Some ink bottles have a foil seal covering the opening. Remove the entire foil seal to ensure that the ink bottle is properly threaded onto the manifold.

8. Remove the cap from the 1/2-liter ink bottle. If present, remove the foil seal from the ink bottle.



CAUTION: Use extreme care when tightening the ink bottle to prevent stripping the threads.

9. Install the ink bottle and tighten until it makes contact with the gasket in the manifold. Continue to tighten the ink bottle another 1/4 to 1/3 turn to compress the gasket.
10. Install the shroud (6) to the manifold (1) using the thumb screws (5). Tighten the thumb screws securely.

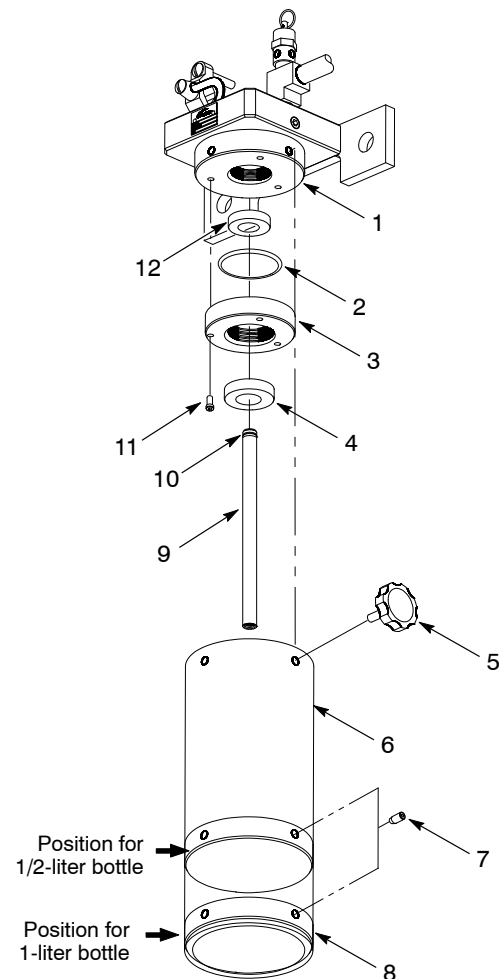


Figure 3 Ink Dot Reservoir Manifold

Parts

See Figure 4 and the following parts list. To order parts, call the Nordson Industrial Coating Systems Customer Support Center at (800) 433-9319 or contact a local Nordson representative.

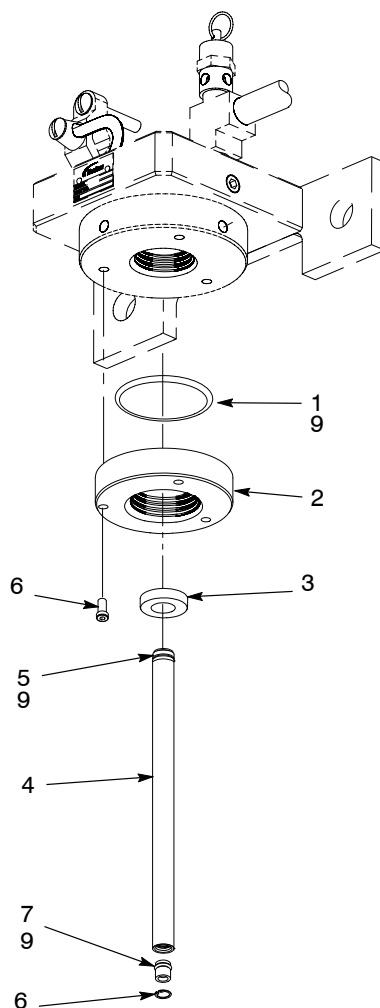


Figure 4 Parts

Item	Part	Description	Quantity	Note
—	1099036	SERVICE KIT, Ink-Dot reservoir adapter	1	
1	1099087	• O-RING, EPR, 1.875 x 2.00 x 0.063 in.	1	
2	-----	• MANIFOLD, adapter	1	
3	1099040	• GASKET	1	
4	1099038	• TUBE, siphon, short, assembly	1	
5	945087	• • O-RING, EPR, 3/16 tube	1	
6	333632	• • RETAINING RING, internal, 0.313 in., stainless steel	1	
7	1099085	• • VALVE, check, cartridge, w/O-ring	1	
8	981680	• SCREW, socket, 1/4-20 x 1.00 in., cap	3	
9	-----	JELLY, petroleum	AR	

Issued 1/10

Original copyright date 2010. Nordson and the Nordson logo are registered trademarks of Nordson Corporation.