

# CanWorks<sup>®</sup> Display Module LCD

## 1. Introduction

These paragraphs provide replacement procedures for the Display Module LCD display. Qualified personnel observing standard safety practices should replace these parts.



**WARNING:** To prevent injury to personnel and damage to equipment, disconnect and lockout power to the system before replacing parts.



**CAUTION:** This unit contains electrostatic sensitive devices (ESD). To prevent damage to ESD parts, wear the grounding wrist strap provided with this kit. The grounding wrist strap must be connected to ground.

## 2. Removing LCD

1. See Figure 1. Remove screws (1) securing the top assembly to the base (15).

**NOTE:** Before disconnecting connectors, note the orientation of the cable connections and connector locking tabs.

2. On the circuit board, disconnect alarm and warning LED connectors (13, 14) from J5 (20) and J6 (21).
3. Disconnect LCD and ribbon cable connectors (11, 12) from the LCD (16).
4. On the circuit board, disconnect the front panel/keypad connector (4) from J3 (18).
5. Remove the front panel/keypad from top enclosure (10).

**NOTE:** Some models have spacers between the LCD and front panel that must be removed.

6. Remove ground strap (9), screws (6, 8), lockwashers (5, 7), and spacers (3) securing LCD (16) to front panel/keypad (2).

---

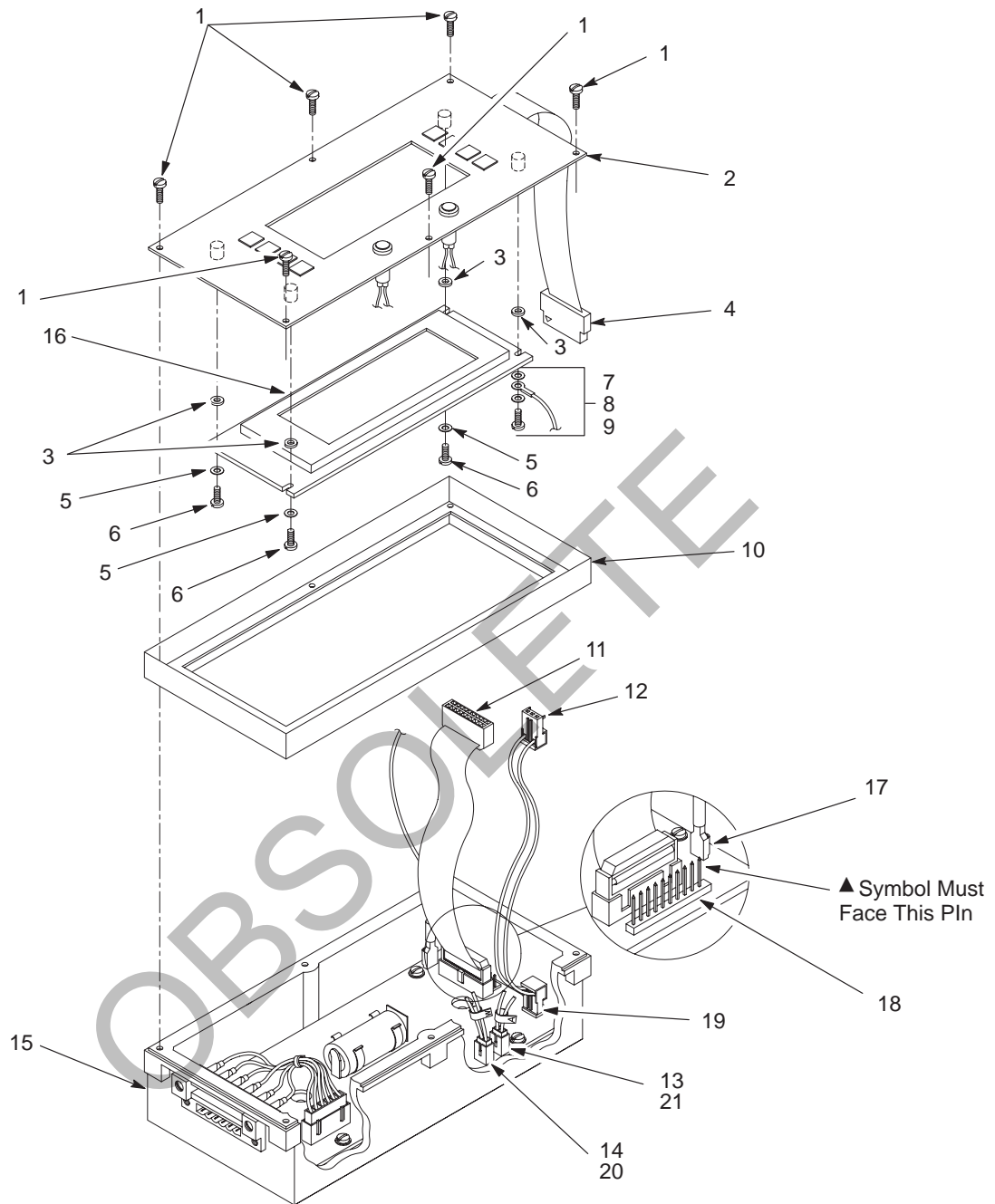
### 3. Replacing LCD

---

1. Remove protective cover from new LCD.

**NOTE:** Some models have spacers between the LCD and front panel that must be installed.

2. See Figure 1. Using screws (6), lockwashers (5) and spacers (3) install LCD (16) to the front panel/keypad (2) as shown. Tighten screws.
3. Use ground strap screw (8) and lockwashers (7) to install ground strap (9). Tighten screw.
4. Install the front panel/keypad (2) into top enclosure (10).
5. On the circuit board, connect the front panel/keypad connector (4) to J3 (18). Ensure ▲ symbol on connector is aligned with J3 as shown.
6. Connect the ribbon cable connector (11) from J2 (17) to the LCD (16).
7. Connect the LCD connector (12) from J4 (19) to LCD (16).
8. On the circuit board, connect the alarm LED connector (13) to J6 (21).
9. On the circuit board, connect the warning LED connector (14) to J5 (20).
10. Use screws (1) to install the top assembly to base (15). Tighten screws.



1410001A

Figure 1 Replacing display module LCD

- |                                 |                            |          |
|---------------------------------|----------------------------|----------|
| 1. Top enclosure screws         | 8. Ground strap screw      | 15. Base |
| 2. Front panel/keypad           | 9. Ground strap            | 16. LCD  |
| 3. Spacers (not on all models)  | 10. Top enclosure          | 17. J2   |
| 4. Front panel/keypad connector | 11. Ribbon cable connector | 18. J3   |
| 5. Lockwashers                  | 12. LCD connector          | 19. J4   |
| 6. LCD screws                   | 13. Alarm LED connector    | 20. J5   |
| 7. Ground strap lockwashers     | 14. Warning LED connector  | 21. J6   |

#### 4. Display Module LCD Parts List

See Figure 2.

Ref.	Note	Part No.	Description	Qty.
—		168 545	Kit, LCD Module	—
1		—	• LCD, Module	1
NS		—	• Strap, Ground	1

NS: Not Shown

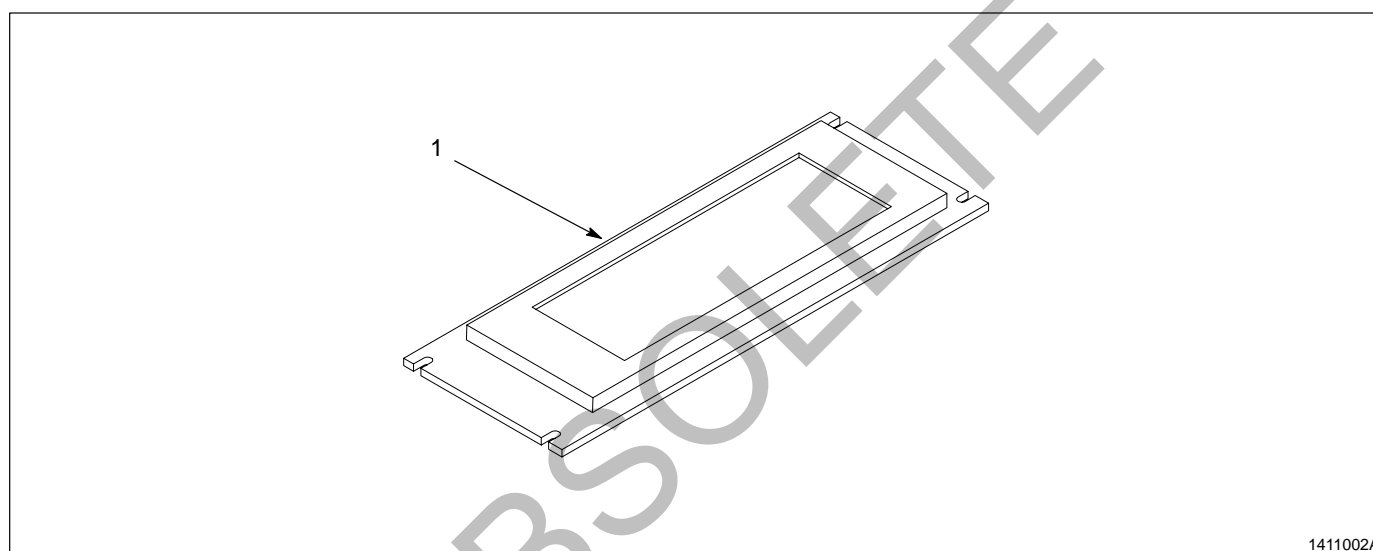


Figure 2 Display module LCD parts

CanWorks, Nordson and the Nordson logo are registered trademarks of Nordson Corporation.