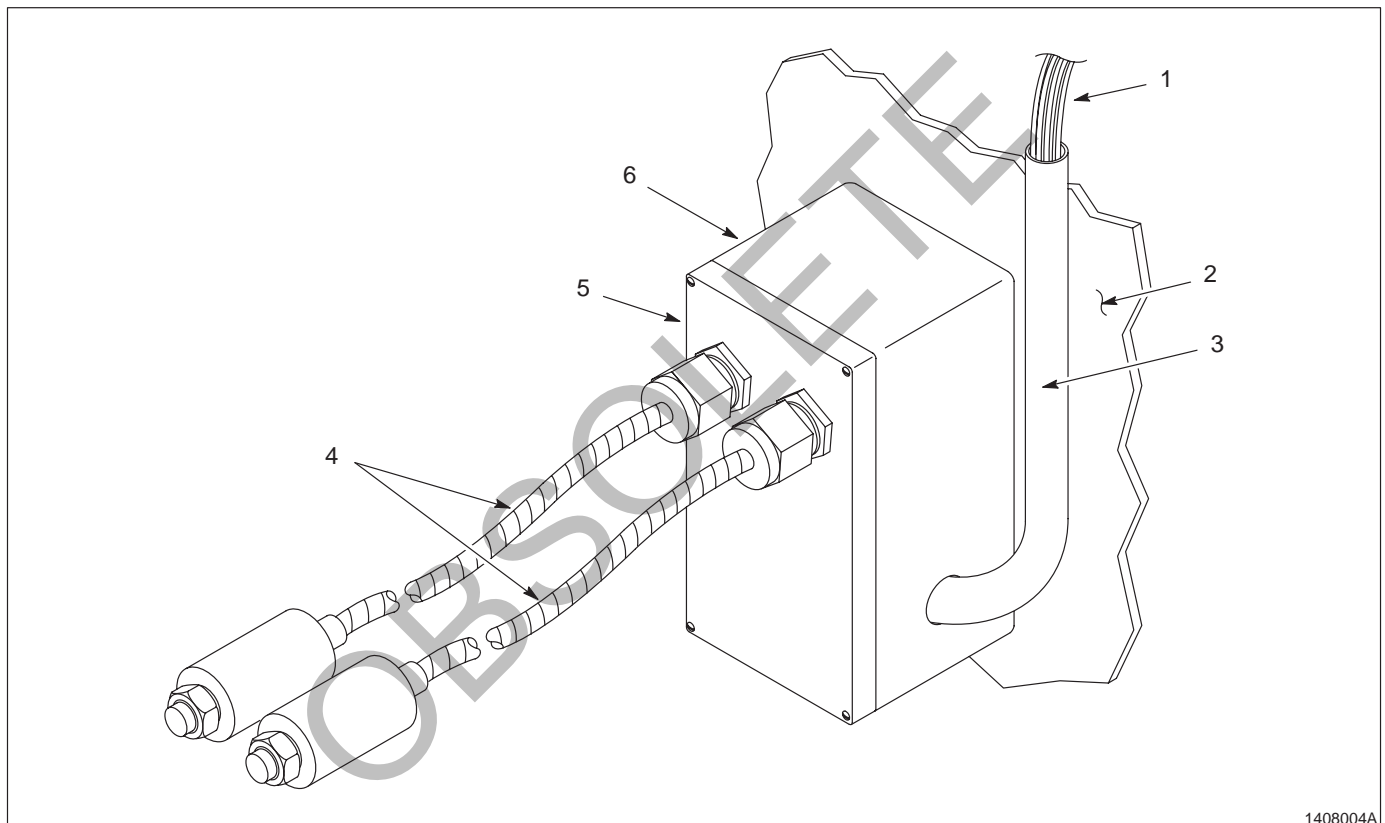


CanWorks[®] Junction Box

1. Introduction

See Figure 1. The CanWorks junction box can be used for system installations that require long wire-runs from the CanWorks pressure transducer to the CanWorks SM-1 Spray Monitor module. Two pressure transducers can be connected to the junction box.



1408004A

Fig. 1 Typical CanWorks junction box installation

- 1. Spray Monitor/Transducer cable
- 2. Spray machine surface

- 3. Conduit
- 4. Pressure Transducer

- 5. Enclosure top
- 6. Enclosure shell

2. Pre-Installation



WARNING: Allow only qualified personnel to perform the following tasks. Observe and follow the safety instructions in this document and all other related documentation.

NOTE: The junction box must be installed in accordance with all local and National Electrical codes.

See Figure 1. The enclosure top (5) can accommodate 2 Pressure Transducers (4). Machine one side of the enclosure shell (6) to accommodate the conduit (3) fittings or strain reliefs for the Spray Monitor/Transducer cable (1). Mount the enclosure shell (6) on or near the spray machine (2).

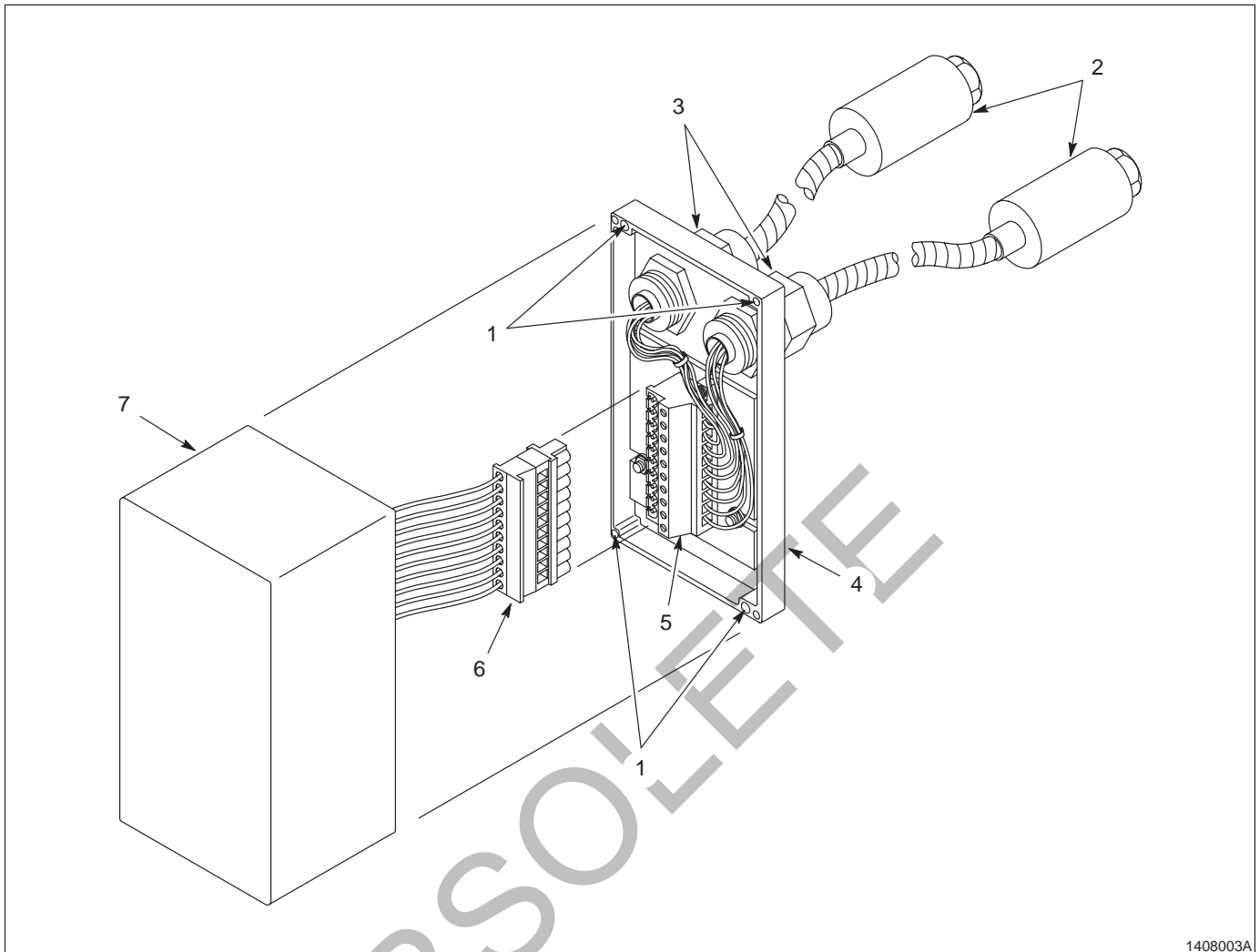
3. Installation

NOTE: Dual-twisted pair, shielded 22-AWG wire (Belden #8723) is required for installation. Wire-runs from the pressure transducer to the Spray Monitor must not exceed 100 ft (30.5 m).

1. See Figure 2. Loosen the four captive screws (1) securing the enclosure top (4).
2. Loosen the cable strain relief nut (3).
3. Route the pressure transducer cable (2) through the cable strain relief nut (3). Tighten the nut.
4. Connect the pressure transducer wires to the 10-position connector (5).
5. Connect the customer-supplied 22-AWG wires to the 10-pin mating connector (6). Make sure the wires will make contact with the proper pressure transducer wires connected to the 10-position connector. Leave enough slack in the cable to allow for removal of the enclosure top (4).

NOTE: If only 1 pressure transducer is installed, use the cable strain relief nut and the enclosed plug to cap the remaining hole.

6. Repeat steps 3 through 6 for the remaining pressure transducer (2).
7. Connect the 10-pin mating connector (6) to the 10-position connector (5).
8. Install the enclosure top (4) to the enclosure shell (7). Tighten the captive screws (1).



1408003A

Fig. 2 Installation

- | | | |
|----------------------------|--------------------------|----------------------------|
| 1. Captive screw | 4. Enclosure top | 6. 10-pin mating connector |
| 2. Pressure transducer | 5. 10-position connector | 7. Enclosure shell |
| 3. Cable strain relief nut | | |

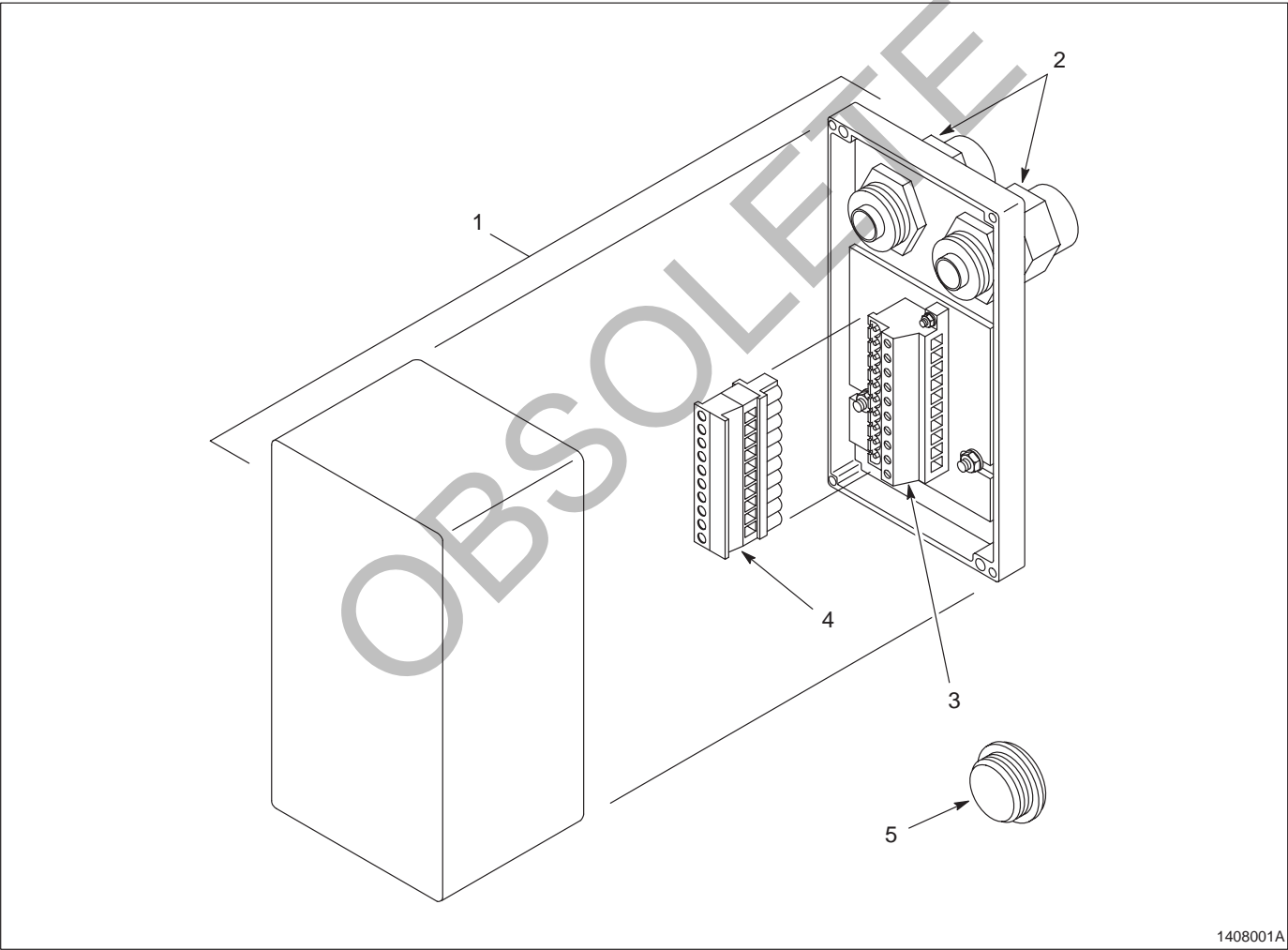
9. Connect the customer-supplied wires from the junction box to the Spray Monitor. These are the pressure transducer wire inputs to the SM-1 Spray Monitor:

<u>Transducer</u>		<u>Spray Monitor Connector</u>
White wire	to	PRESS +
Black wire	to	PRESS –
Red wire	to	EXC +
Green	to	EXC –
Silver wire	to	\perp

4. Parts list

See Figure 3 for component location.

Item	Part	Description	Quantity	Note
—	167 146	Junction box, CanWorks	1	
1	-----	• Enclosure	1	
2	137 587	• Strain relief, cable	2	
3	933 619	• Connector, 10-position	1	
4	972 802	• Connector, 10-pin	1	
5	900 743	• Plug	1	



1408001A

Fig. 3 CanWorks junction box parts

CanWorks, Nordson, and the Nordson logo are registered trademarks of Nordson Corporation.