

CP Pump Roller Valve Conversion Kit Instructions

Kit P/N 164 417

1. Introduction

Refer to Figure 1. The CP Pump roller valve replacement kit consists of these parts.

| Ref. | Note | Part No. | Description | Qty. |
|------|------|----------|-----------------------------------|------|
| | | 164 417 | Kit, Conversion, CP Roller Valve | — |
| 1 | | 164 419 | • Valve, Roller Operated | 2 |
| 2 | | 981 099 | • Screw, Fil. Hd., # 8-32 x 1 in. | 4 |
| 3 | | 983 111 | • Washer, Lock, Spt, # 8 | 4 |
| 4 | | 164 418 | • Bracket, Roller Valve | 1 |
| 5 | | 981 208 | • Screw, Hex, 1/4-20 x .62, Zn | 2 |
| 6 | | 983 140 | • Washer, Lock, Spt, 1/4 | 2 |

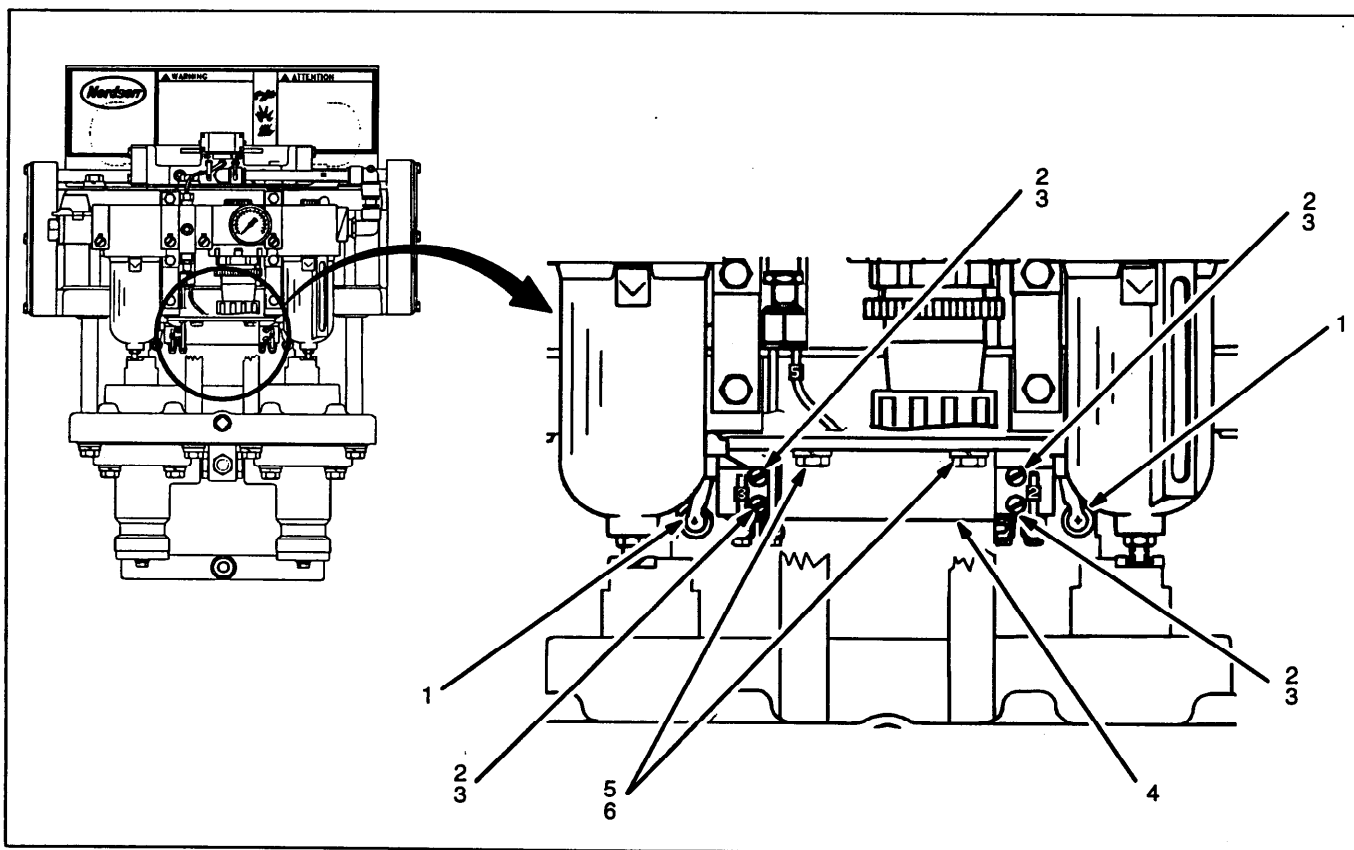


Figure 1. CP Pump Roller Valve Replacement Parts

2. Replacement



WARNING: Before servicing, shut off air supply to relieve hydraulic pressure. If used, shut off pressure feed system.

1. Refer to Figure 2. Disconnect air lines from roller valves.
2. Remove screws and lockwashers securing bracket to CP Pump.
3. Remove air fittings from roller valves. Discard old bracket and roller valves.
4. Install air fittings into new roller valves (P/N 164 419).
5. Using screws and lockwashers, install roller valves to new bracket (P/N 164 418). Tighten screws securely.
6. Using screws and lockwashers, install bracket to CP Pump. Tighten screws securely.
7. Connect air lines to roller valves.

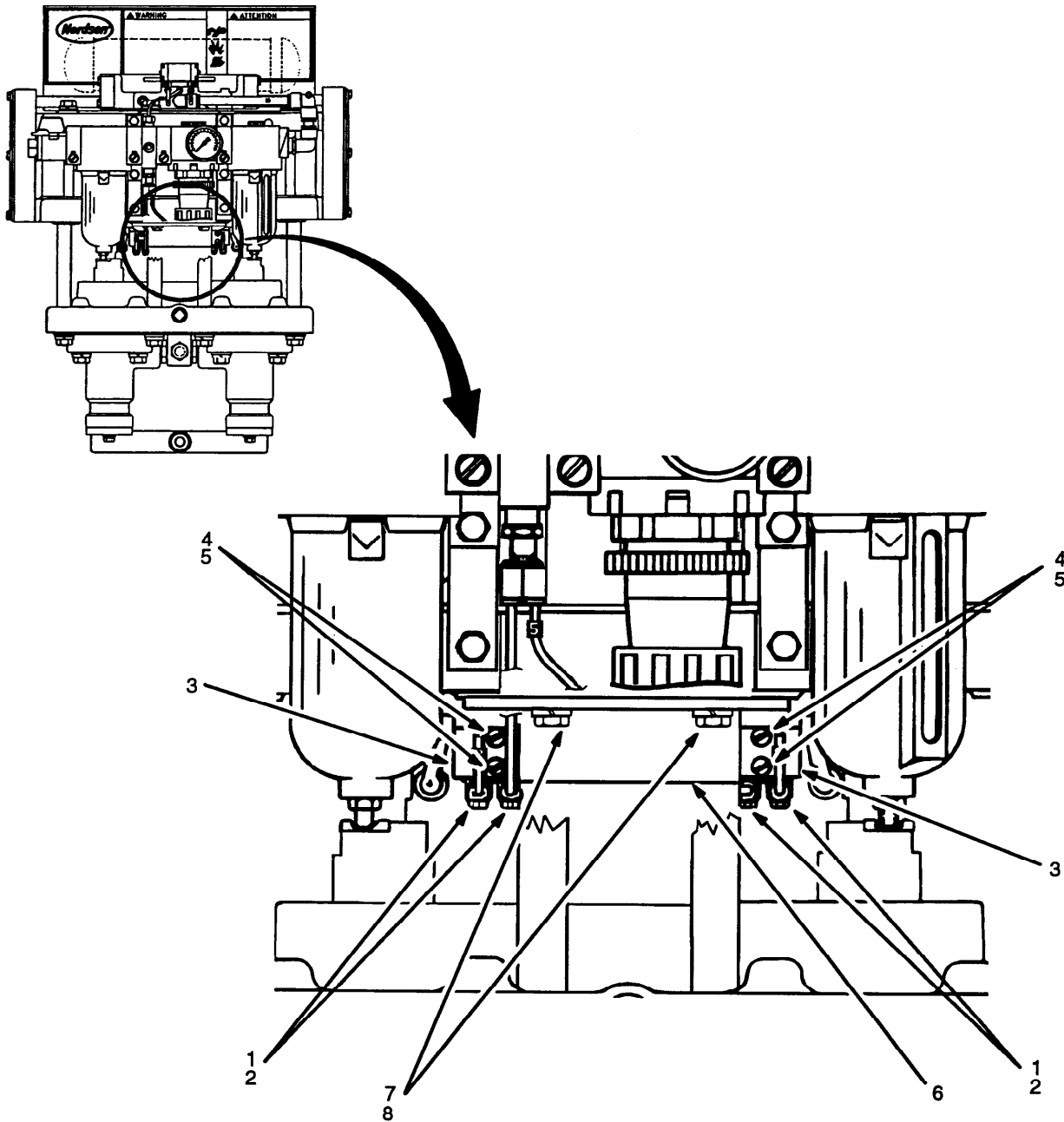


Figure 2. Roller Valve Replacement

- | | |
|-----------------------|----------------------------|
| 1. AIR LINE | 5. ROLLER VALVE LOCKWASHER |
| 2. AIR FITTING | 6. BRACKET |
| 3. ROLLER VALVE | 7. BRACKET SCREW |
| 4. ROLLER VALVE SCREW | 8. BRACKET LOCKWASHER |

