

CleanSleeve® Cover



WARNING: Allow only qualified personnel to perform the following tasks. Follow the safety instructions in this document and all other related documentation.



WARNING: Shut down the system before you install the CleanSleeve cover.

Description

The CleanSleeve® covers protect the spray gun's nozzle nut, extension, and body from coating material build-up. CleanSleeve covers are available for both standard and extended spray guns. Single-use and reusable covers are available.

Single-Use Cover

Single-use covers are not designed to be cleaned and reused. Use single-use covers once and discard when replacement is needed.

Installation

1. See Figure 1. Slide the CleanSleeve cover (3) over the front of the spray gun (1). Make sure that the CleanSleeve cover is firmly seated against the nozzle nut (2) and the nozzle nut boss (4) protrudes through the cover opening.
2. Replace the CleanSleeve cover when coating material builds up on cover. Allow coating material to dry before discarding the cover.

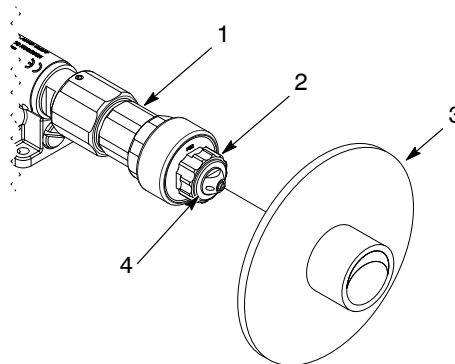


Figure 1 Single-use CleanSleeve Cover Installation

- | | |
|---------------|---------------------|
| 1. Spray gun | 3. Single-use cover |
| 2. Nozzle nut | 4. Nozzle nut boss |

Reusable Covers

Installation

Follow this installation procedure for optimum performance and life of product for both new and reinstalled covers.

See Figure 2.

1. Completely clean the exterior of the spray gun (1).
2. Lightly coat the spray gun with applicable topical coating release.
3. Lightly coat the interior of the the CleanSleeve cover (3) with applicable topical coating release.

NOTE: Ensure the interior surface of the cover that fits around the nozzle nut is also lightly coated.

4. Slide the cover (3) over the front of the spray gun (1). Make sure that the CleanSleeve cover is firmly seated against the nozzle nut (2) and the nozzle nut boss (4) protrudes through the cover opening.

NOTE: If using a twisting motion to install cover, twist in same direction to tighten nozzle nut to keep nozzle nut tightly in place.

5. Lightly apply an applicable topical coating release to the exterior of the cover to complete install.

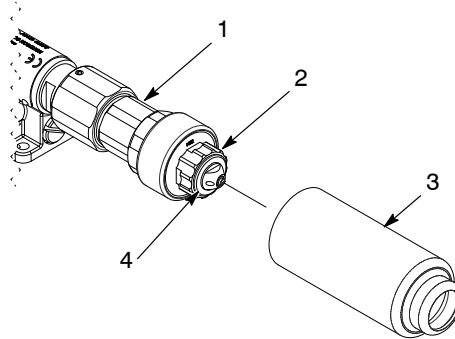


Figure 2 Reusable CleanSleeve Cover Installation

- | | |
|---------------|--------------------|
| 1. Spray gun | 3. Reusable cover |
| 2. Nozzle nut | 4. Nozzle nut boss |

Removing and Cleaning Reusable Cover

NOTE: Reusable cover should be removed and cleaned for each shift to no less than once per day for optimum performance.

1. Remove the cover from the spray gun.

NOTE: If using a twisting motion to remove cover, twist in same direction to tighten nozzle nut to keep nozzle nut tightly in place.

2. Pull off and remove excess coating and release material.

NOTE: If needed place in a heated cleaning tank (less than 140° F) of bypass fluid for 30–45 minutes.

3. Clean remaining coating and coating release material from the interior and exterior surfaces and dry.

Cover is now clean and ready for reinstallation when needed.

Maintenance on Reusable Covers

Expected life cycle of reusable cover is about 90–180 days when both installation and cleaning procedures are followed.

Once reusable cover has reached the end of its life, allow coating material to dry before discarding cover.

Parts

See Figure 3.

Item	Part	Description	Quantity	Note
1	141444	COVER, CleanSleeve, 500 pieces	1	A, C
2	149237	COVER, CleanSleeve, mini, 500 pieces	1	A, C, D
3	1618384	KIT, cover, CleanSleeve, MEG [®] gun, slip fit, 12 pieces	1	B, D

NOTE A: Single-use cover.
 B: Reusable cover.
 C: Includes a total of 500 CleanSleeve covers, in 20 packs of 25.
 D: Works on MEG II reduced cavity spray guns.

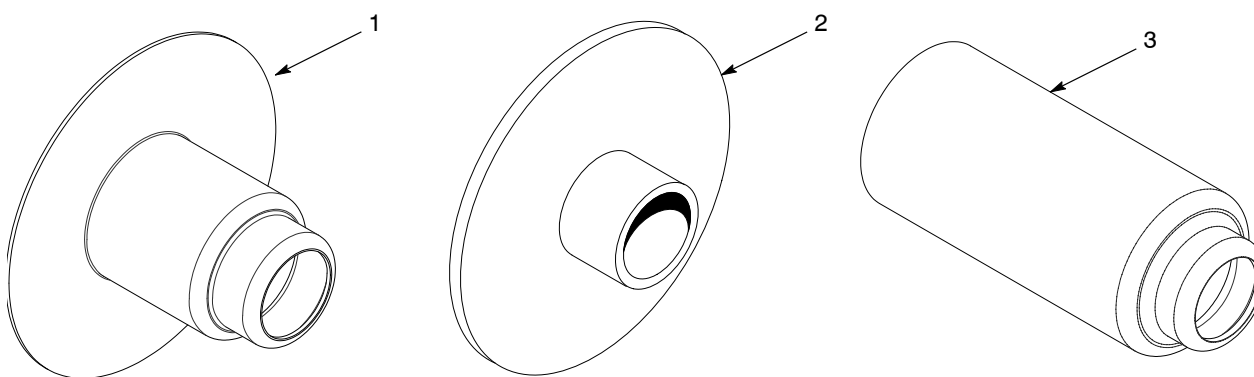


Figure 3 CleanSleeve Covers

Issued 11/19

Original copyright date 1997. CleanSleeve, MEG, Nordson, and the Nordson logo are registered trademarks of Nordson Corporation.