

Pressure Housing Retainer Service Kit 64B Stainless Steel Pumps

1. Introduction

This instruction sheet covers the installation of the following kit:

156 329 64B housing retainer service kit

This kit replaces the standard two-piece housing retainer used on 64B stainless steel pumps with a new two-piece retainer and a one-piece reinforcing collar.



WARNING: Allow only qualified personnel to perform the following tasks. Follow the safety instructions in this document and all other related documentation.

2. Installation

The kit can be installed without removing the pump from its mounting, as long as there is sufficient clearance under the pump to allow for removal of the hydraulic section.

1. Remove the siphon hose from the material supply and run the pump dry, applying as little air pressure as possible. Shut off the air supply when the pump begins to stroke uncontrollably (run away).



WARNING: Shut off the pump, relieve the air pressure and lock out the air supply. Failure to follow this instruction could result in personal injury or property damage.

2. Shut off and lock out the pump air supply. Disconnect the siphon and high-pressure hoses from the pump.
3. Drain the solvent chamber fluid from the solvent chamber by removing the plug from the bottom of the filler cup.
4. Remove the muffler box covers, muffler boxes, air inlet nipple, and sheet metal cover.
5. See Figure 1. Remove the four screws and lock washers (5, 4) that secure the solvent chamber (3) to the lower cylinder head (1).

2. Installation (contd.)

6. Pull the hydraulic section (10) away from the lower cylinder head to expose the connecting rod (2) and plunger (9).
7. Support the hydraulic section and unscrew the connecting rod from the plunger. Move the hydraulic section to a clean work area.
8. Remove and discard the four screws and lock washers (8, 7) that secure the retainer halves (6) to the solvent chamber. Remove the solvent chamber and retainer halves from the hydraulic section.

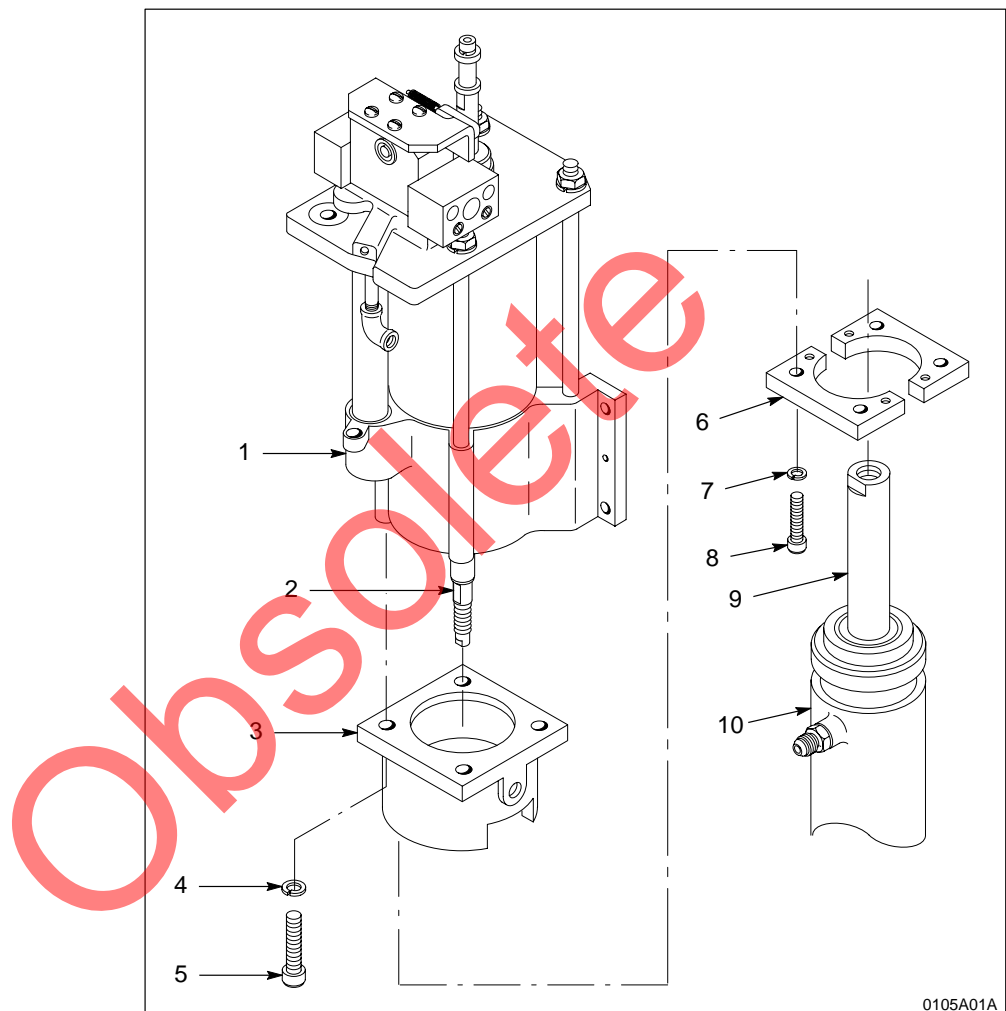


Fig. 1 Removing old two-piece retainer

- | | |
|------------------------|-----------------------|
| 1. Lower cylinder head | 6. Retainer halves |
| 2. Connecting rod | 7. Lock washers (4) |
| 3. Solvent chamber | 8. Screws (4) |
| 4. Lock washers (4) | 9. Plunger |
| 5. Screws (4) | 10. Hydraulic section |

2. Installation (contd.)

9. See Figure 2. Clean the retainer groove (14), top of the hydraulic housing (13), and upper packing gland (15) with a solvent or cleaning solution compatible with the material you are pumping.
10. Check the O-ring (12) in the top of the packing gland. Replace the O-ring with the new one included in the kit.
11. Install the collar (8) included in the kit over the top of the housing as shown in Figure 2. The cutout in the surface of the collar must face down, over the hydraulic housing outlet.
12. Install the new retainer halves (7) on top of the collar and into the groove in the housing. Line up the holes in the collar and the retainer halves.
13. Install the solvent chamber (4) on top of the retainer halves. Install the four new $\frac{1}{4}$ -in. socket head screws and lock washers (16, 17) through the collar and into the retainer halves. Do not tighten the screws.
14. Install the four new $\frac{3}{8}$ -in. screws and lock washers (10, 9) through the collar and retainer halves and into the solvent chamber. Do not tighten the screws.
15. Align the housing, collar, retainer halves, and solvent chamber. Tighten the $\frac{3}{8}$ -in. screws.
16. Check the O-ring (3) on the connecting rod. Replace the O-ring with the new one included in the kit. Apply thread adhesive to a couple of the top threads on the connecting rod.
17. Support the hydraulic section under the air motor, and screw the connecting rod (2) into the plunger.
18. Push the hydraulic section up until you can secure the solvent chamber to the lower cylinder head (1) with the four screws and lock washers (6, 5).

2. Installation (contd.)

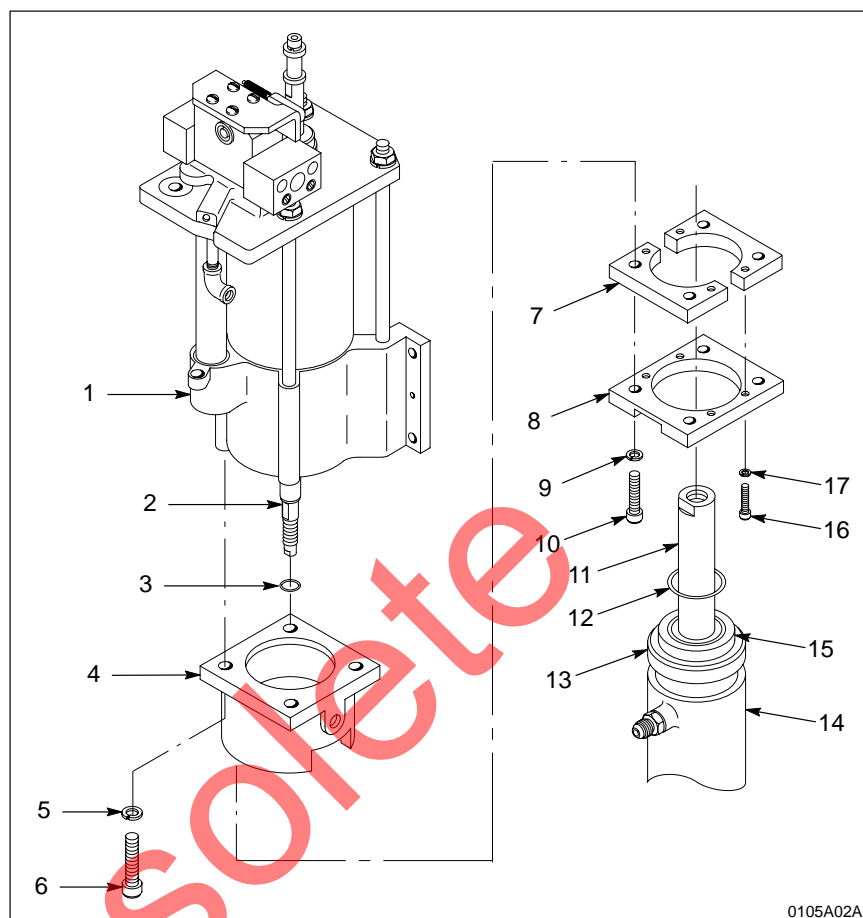


Fig. 2 Installing the retainer kit

- | | |
|--|---|
| 1. Lower cylinder head | 10. $\frac{3}{8}$ -in. screws (4) |
| 2. Connecting rod | 11. Plunger |
| 3. O-ring | 12. O-ring |
| 4. Solvent chamber | 13. Hydraulic housing |
| 5. Lock washers (4) | 14. Retainer groove |
| 6. Screws (4) | 15. Packing gland |
| 7. Retainer halves | 16. $\frac{1}{4}$ -in. screws (4) |
| 8. Collar | 17. $\frac{1}{4}$ -in. lock washers (4) |
| 9. $\frac{3}{8}$ -in. lock washers (4) | |

2. Installation (contd.)

19. Install the sheet metal cover, muffler boxes, muffler box covers, and air inlet nipple.
20. Connect the siphon and high-pressure hoses and fill the solvent chamber.
21. Purge the air from the pump and high-pressure hydraulic system before resuming operations.

3. Parts List

See Figure 2.

Item	Part	Description	Note
—	156 329	Service kit, 64B, housing retainer	1
3	940 120	• O-ring, hot paint, .375 x .500 x .063 in.	1
7	156 331	• Retainer, housing	2
8	156 078	• Collar, retainer	1
9	983 160	• Washer, lock, split, $\frac{3}{8}$ in.	4
10	981 936	• Screw, socket head, $\frac{3}{8}$ -16 x 1.500 in.	4
12	940 294	• O-ring, Viton, black, 1.500 x 1.625 x .063 in.	1
16	981 906	• Screw, socket head, $\frac{1}{4}$ -20 x .750 in.	4
17	983 140	• Washer, lock, split, $\frac{1}{4}$ in.	4

Original copyright date 1992. Nordson and the Nordson logo are registered trademarks of Nordson Corporation.

Viton is a registered trademark of E.I. DuPont de Nemours & Co.

Obsolete