

Dual Filter Assemblies

1. Introduction

See Figures 1 through 3. Nordson dual filter assemblies are designed for constant, demand-type applications where it is impractical to stop production for filter cleaning or servicing. Each filter assembly is shipped with 0.006 in. reinforced screens.

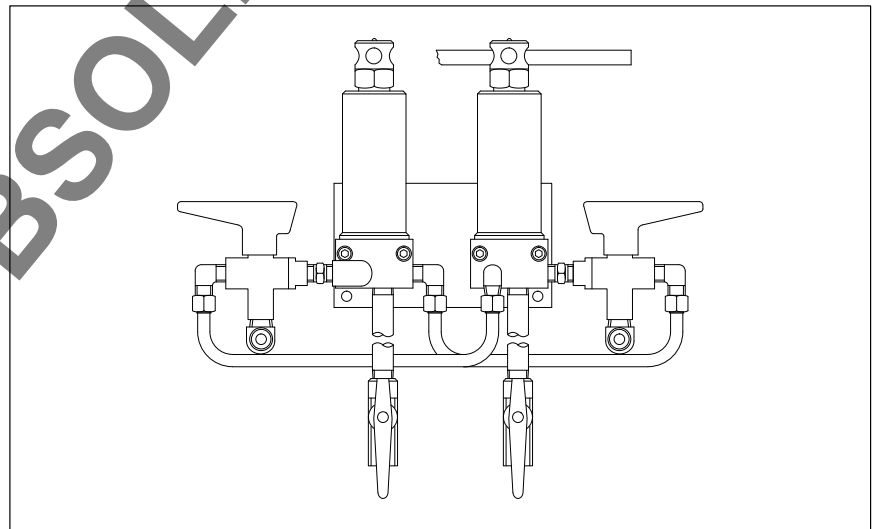


Fig. 1 Standard Dual Filter Assembly

1. Introduction (contd)

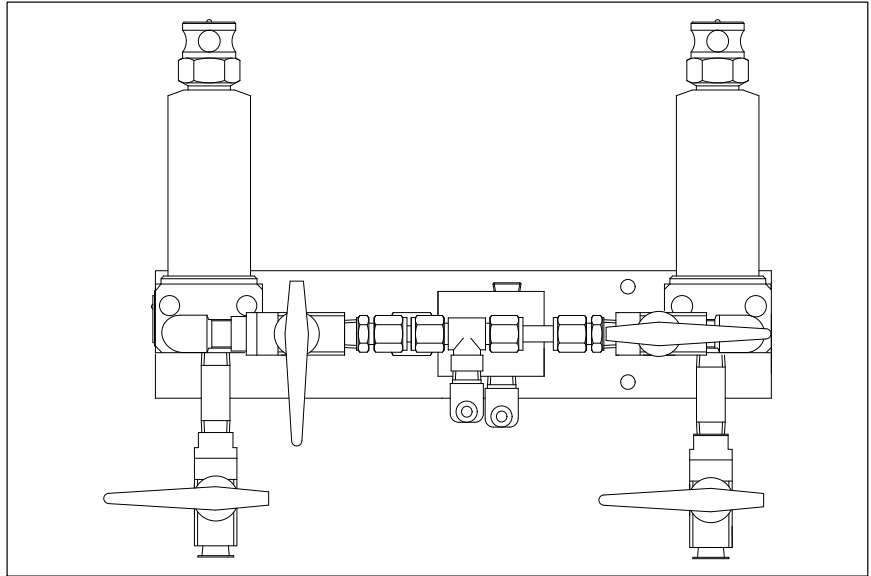


Fig. 2 Standard Dual Filter with Check Valves

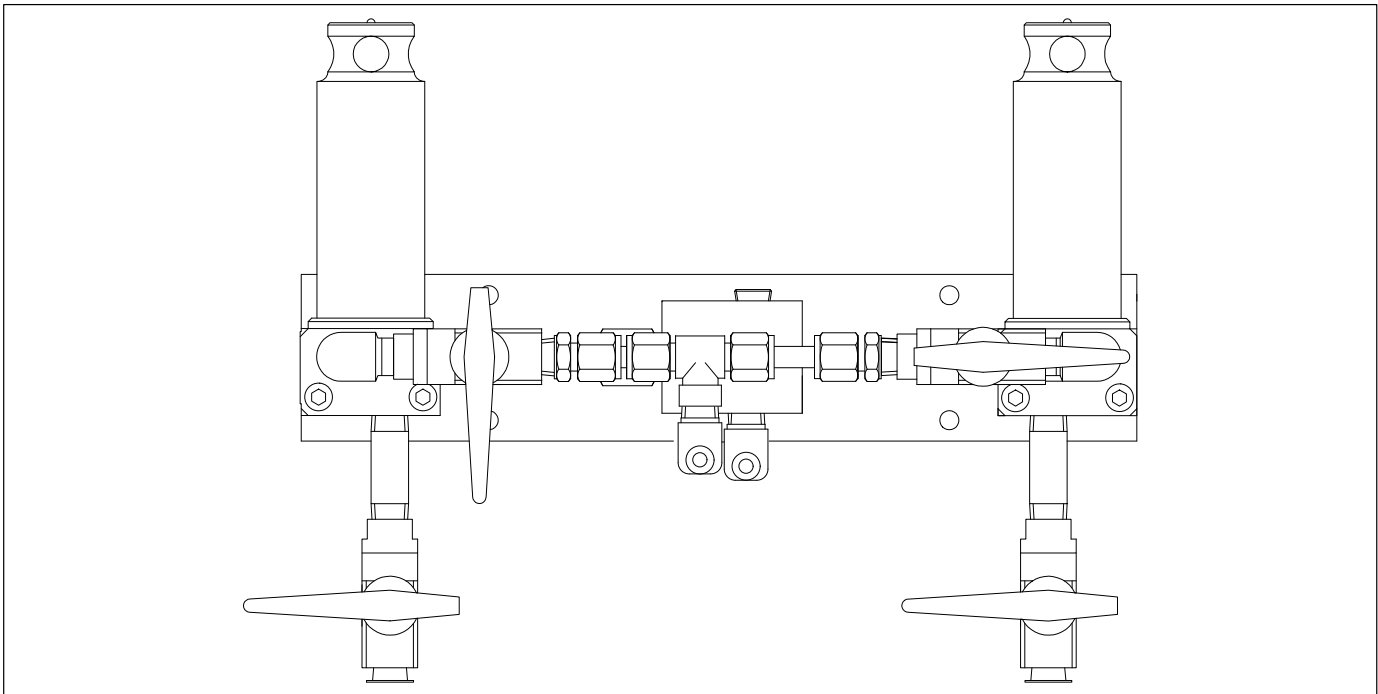


Fig. 3 Stainless Steel Dual Filter with Check Valves

2. Mounting

The dual filter assembly must be mounted in an upright position as illustrated in Figures 1, 2, and 3.

NOTE: Refer to your system manual for connecting fluid lines to any of the dual filter assemblies.

3. Specifications

Standard and Stainless Steel Dual Filters

Overall height:	355.6 mm (14 in.)
Mounting plate length:	406.4 mm (16 in.)
Mounting plate width:	152.4 mm (6 in.)
Input/output fittings:	1/2-20 JIC

Standard and Stainless Steel Dual Filters with Check Valves

Overall height:	310.9 mm (12.24 in.)
Mounting plate length:	368.3 mm (14.5 in.)
Mounting plate width:	76.2 mm (3 in.)
Input/output fittings:	1/2-20 JIC

Maximum Operating Pressure



WARNING: To prevent serious injury, relieve system air and fluid pressure before replacing any parts.

All dual filters:	207 bar (3000 psi)
-------------------	--------------------

4. Valve Handle Positions

See Figure 4 for valve handle positions.

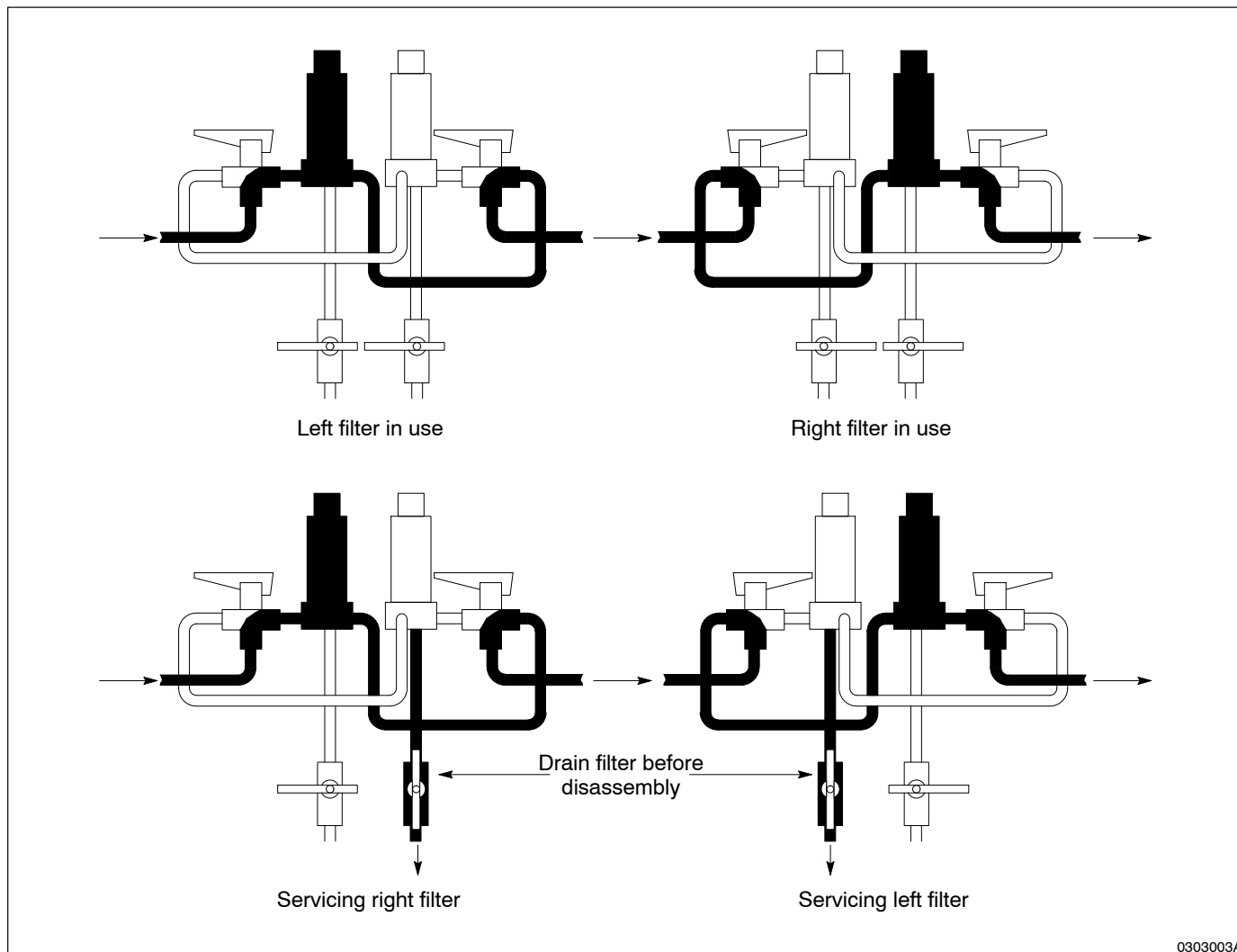


Fig. 4 Dual Filter Valve Handle Positions

5. Parts

Use the following charts to order replacement parts for the dual filter assemblies.

Standard Dual Filter

See Figure 5.

Item	Part	Description	Quantity	Note
—	248328	Filter, dual	1	
1	161304	• Housing	2	
2	161106	• Screen, 0.006 in.	2	A
3	161310	• Bolt	2	
4	248325	• Base, filter	2	
5	750040	• Valve, ball	2	
6	981443	• Screw, socket head, cap $\frac{5}{16}$ -18 x $2\frac{3}{4}$	4	
7	973422	• Plug, pipe, $\frac{3}{8}$ NPT	2	B
8	973118	• Nipple, extra heavy, $\frac{3}{8}$ x 4.5	2	B
9	248323	• Tubing, inlet	1	B
10	248324	• Tubing, outlet	1	B
11	247948	• Valve, ball, 3-way	2	B
12	971517	• Elbow, male, hydraulic compression, $\frac{1}{2}$ T x $\frac{3}{8}$ NPT	4	B
13	973073	• Nipple, hex, $\frac{3}{8}$ x $\frac{3}{8}$ x 1.45, elbow	2	B
13	973059	• Nipple, hex, $\frac{3}{8}$ x $\frac{3}{8}$ x 1.45	2	B
14	973175	• Elbow, pipe, hydraulic, 90°, $\frac{3}{8}$	1	B
15	972180	• Elbow, male, 37°, $\frac{1}{2}$ -20 x $\frac{3}{8}$ NPT	2	B
16	161376	• Plate, mounting	1	
17	161404	• Bar	1	
NS	972255	• Elbow, male, 37°, $\frac{3}{4}$ -16 x $\frac{3}{8}$ NPT	2	

NOTE A: Included with the dual filter. Refer to *Optional Screens* for a list of available screens.

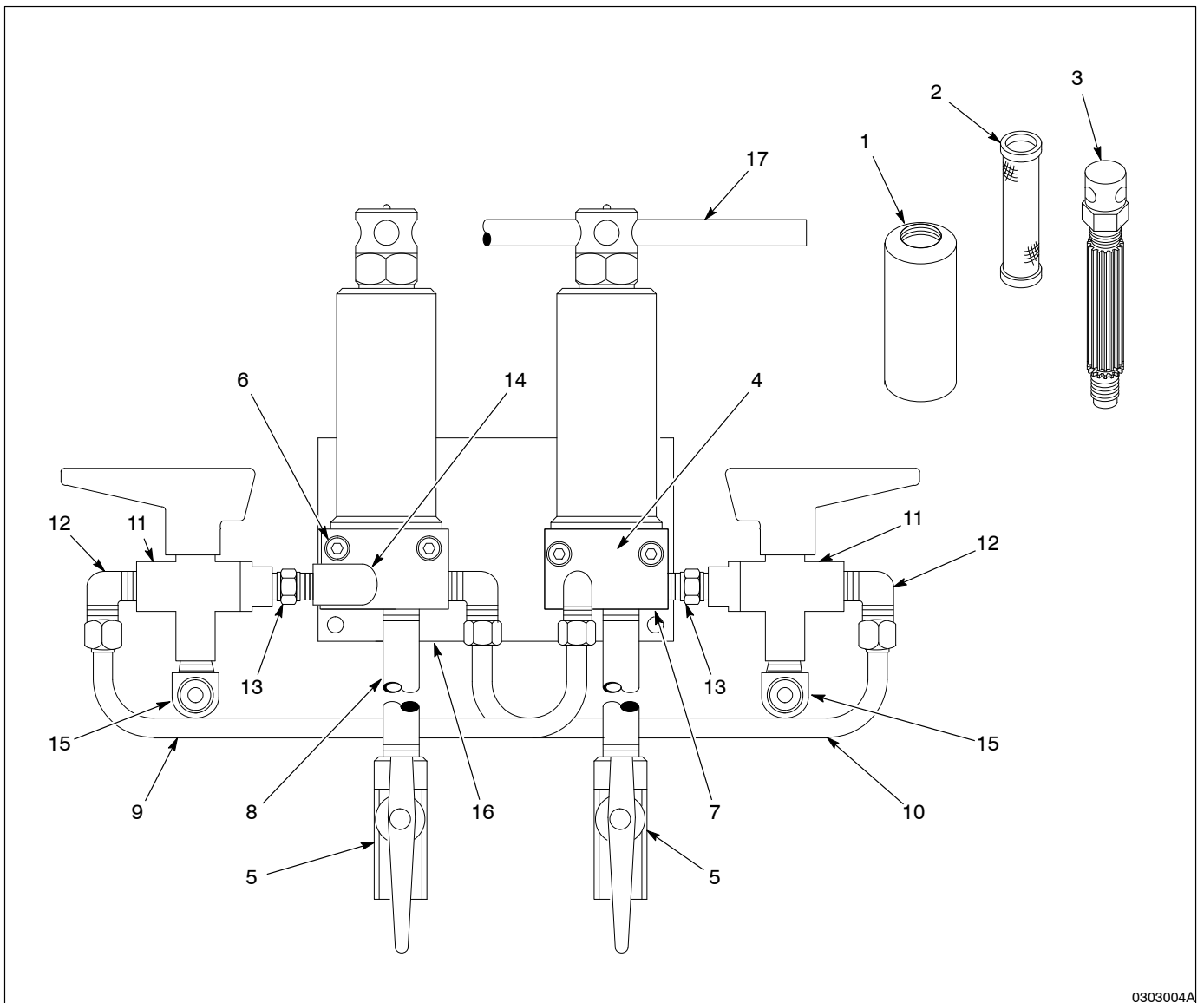
B: These parts are included in the changeover filter kit, part 247 934.

NS: Not Shown

Stainless Steel Dual Filter

See Figure 5.

Item	Part	Description	Quantity	Note
—	714400	Filter, dual, stainless steel	1	A
1	161511	• Housing, filter	2	
2	161106	• Screen, 0.006 in.	2	
3	161517	• Support, screen, stainless steel	2	
NS	940302	• O-ring, PTFE, 1.625 x 1.750 x 0.060 in.	2	
4	110912	• Base, filter	2	
5	750130	• Valve, ball, stainless steel	2	
6	981443	• Screw, socket head, cap $\frac{5}{16}$ -18 x $2\frac{3}{4}$	4	
7	973423	• Plug, pipe, socket, $\frac{3}{8}$ NPT, stainless steel	2	
8	973116	• Nipple, extra heavy, $\frac{3}{8}$ x 4.50, stainless steel	2	
9	248323	• Tubing, inlet	1	
10	248324	• Tubing, outlet	1	
11	247673	• Valve, ball, 3-way, stainless steel	2	
12	971451	• Elbow, male, hydraulic compression, $\frac{1}{2}$ T x $\frac{3}{8}$ NPT	4	
13	973059	• Nipple, hex, $\frac{3}{8}$ x $\frac{3}{8}$ x 1.45	2	
14	973180	• Elbow, pipe, hydraulic, 90°, $\frac{3}{8}$, stainless steel	1	
15	972718	• Elbow, male, 37°, $\frac{1}{2}$ -20 x $\frac{3}{8}$ NPT	2	
16	161376	• Plate, mounting	1	
17	161404	• Bar	1	
NOTE A: Included with the dual filter. Refer to <i>Optional Screens</i> for a list of available screens.				
NS: Not Shown				



0303004A

Fig. 5 Dual Filter Assemblies

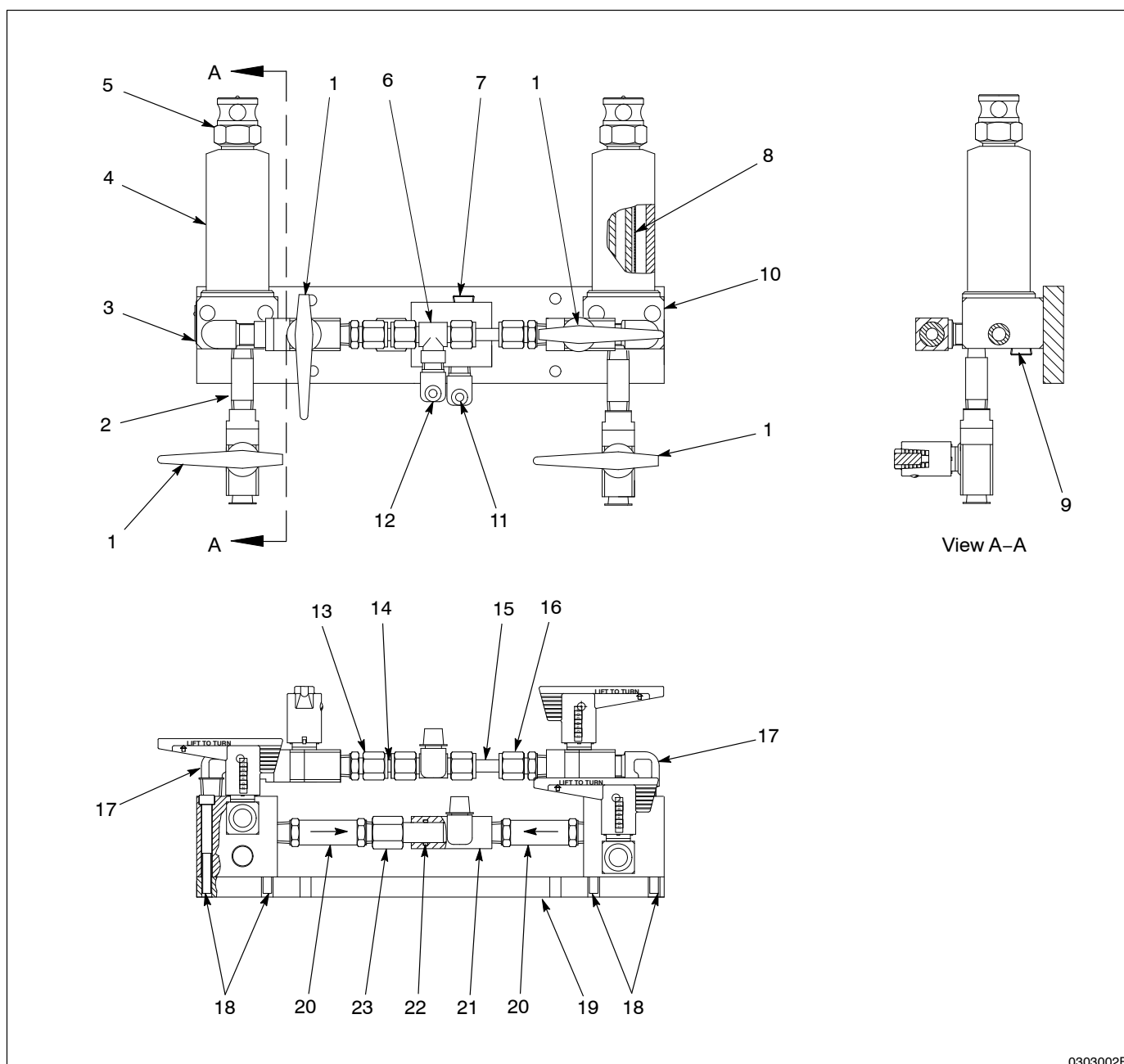
**Standard Dual Filter with
Check Valves**

See Figure 6.

Item	Part	Description	Quantity	Note
—	166926	Filter, dual, system, standard	1	A
1	750040	• Valve, ball	4	
2	973052	• Nipple, extra heavy, $\frac{3}{8}$ x 2.5 in.	2	
3	248325	• Base, filter	1	
4	161304	• Housing	2	
5	161310	• Bolt	2	
6	971720	• Tee, female, branch, stainless steel, 0.38 x 0.25 NPT	1	
7	973410	• Plug, pipe, socket, standard, $\frac{1}{4}$	1	
8	161106	• Screen, reinforced, 0.006 in.	2	
9	973422	• Plug, pipe, socket, flush, $\frac{3}{8}$	1	
10	166928	• Base, filter, standard	1	
11	972180	• Elbow, male, 37, $\frac{1}{2}$ -20 x $\frac{3}{8}$ NPT	1	
12	972177	• Elbow, male, 37, $\frac{1}{2}$ -20 x $\frac{1}{4}$, stainless steel	1	
13	971211	• Connector, male, 0.38 tube x 0.38 NPT, stainless steel	1	
14	137718	• Connector, port, 0.38 tube, stainless steel	1	
15	485812	• Tube, 304 stainless steel, 0.375 x 0.035	1	
16	971323	• Connector, male, 0.38 tube x 0.38 NPT	1	
17	973178	• Elbow, male, pipe, hydraulic, $\frac{3}{8}$	2	
18	981443	• Screw, socket, $\frac{5}{16}$ -18 x 2.750	4	
19	166933	• Plate, mounting	1	
20	166930	• Valve, check, brass, $\frac{3}{8}$ NPT	2	
21	166932	• Block, adapter, $\frac{3}{8}$ NPT	1	
22	941140	• O-ring, hot paint, 0.625 x 0.813 x 0.094 in.	1	
23	168543	• Adapter, $\frac{3}{8}$ NPT	1	
NS	161404	• Bar	1	

NOTE A: Included with the dual filter. Refer to *Optional Screens* for a list of available screens.

NS: Not Shown



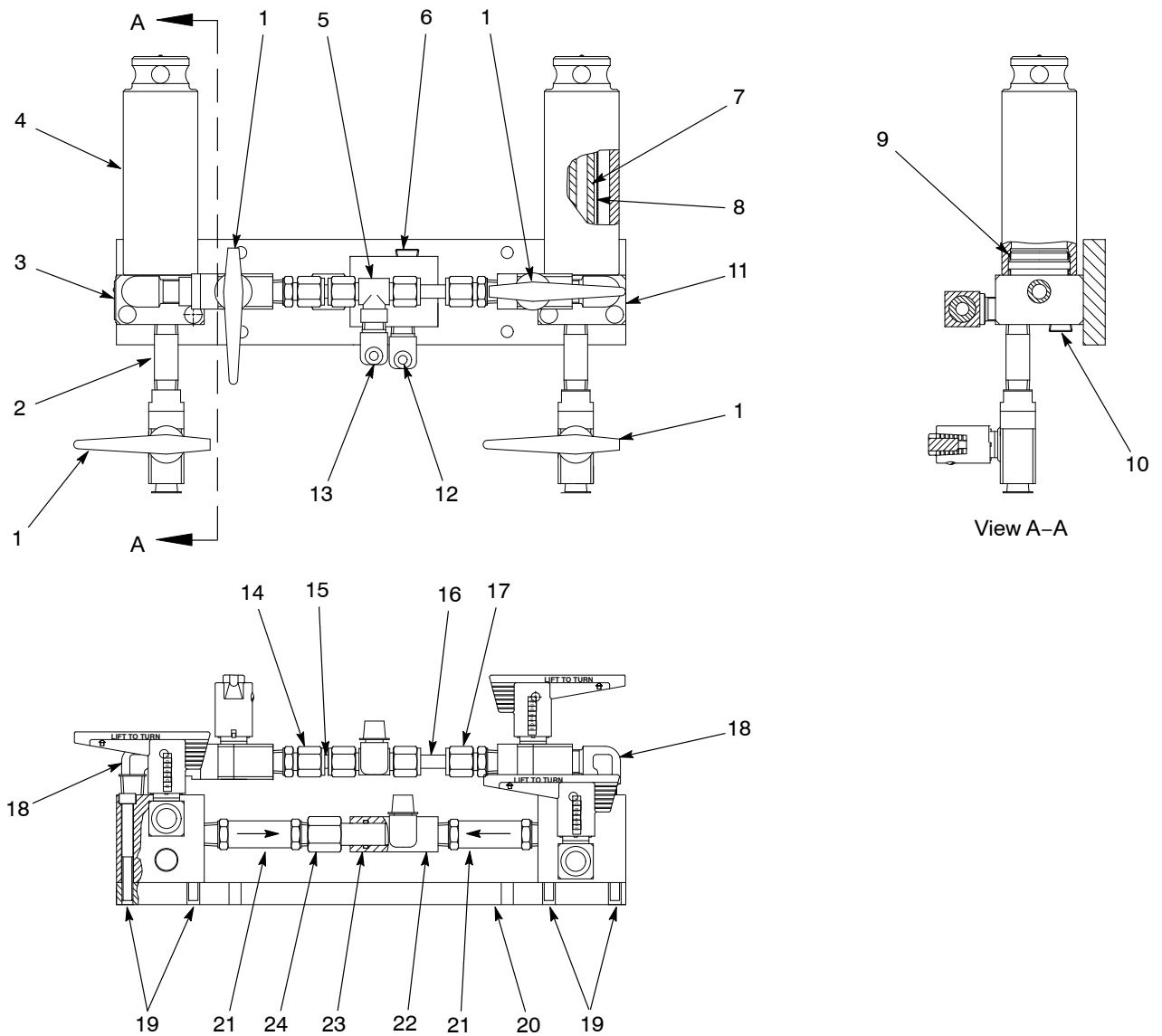
0303002B

Fig. 6 Standard Dual Filter with Check Valves

**Stainless Steel Dual Filter with
Check Valves**

See Figure 7.

Item	Part	Description	Quantity	Note
—	166927	Filter, dual, system, stainless steel	1	A
1	750130	• Valve, ball, stainless steel	4	
2	973054	• Nipple, extra heavy, 3/8 x 2.5 in.	2	
3	110912	• Base, filter	1	
4	161511	• Housing, filter	2	
5	971720	• Tee, female, branch, stainless steel, 0.38 x 0.25 NPT	1	
6	973415	• Plug, pipe, socket, standard, 1/4	1	
7	161517	• Support screen, stainless steel	2	
8	161106	• Screen, reinforced, 0.006	2	
9	940302	• O-ring, PTFE, 1.625 x 1.750 x 0.060 in.	2	
10	973423	• Plug, pipe, socket, standard, 3/8, stainless steel	1	
11	166929	• Base, filter, stainless steel	1	
12	972718	• Elbow, male, 37, 1/2-20 x 3/8 NPT	1	
13	972177	• Elbow, male, 37, 1/2-20 x 1/4, stainless steel	1	
14	971211	• Connector, male, 0.38 tube x 0.38 NPT, stainless steel	1	
15	137718	• Connector, port, 0.38 tube, stainless steel	1	
16	485812	• Tube, 304 stainless steel, 0.375 x 0.035	1	
17	971323	• Connector, male, 0.38 tube x 0.38 NPT	1	
18	973246	• Elbow, male, pipe, hydraulic, 3/8	2	
19	981443	• Screw, socket, 5/16-18 x 2.750	4	
20	166933	• Plate, mounting	1	
21	166931	• Valve, check, 3/8 NPT, stainless steel	2	
22	166932	• Block, adapter, 3/8 NPT	1	
23	941140	• O-ring, hot paint, 0.625 x 0.813 x 0.094 in.	1	
24	168543	• Adapter, 3/8 NPT	1	
NS	161404	• Bar	1	
NOTE A: Included with the dual filter. Refer to <i>Optional Screens</i> for a list of available screens.				
NS: Not Shown				



0303007B

Fig. 7 Stainless Steel Dual Filter with Check Valves

Optional Screens

Use the following parts list to order different-sized screens as required.

Part	Description
161020	Screen, 0.020 in., not reinforced
161030	Screen, 0.030 in., not reinforced
161102	Screen, 0.002 in., reinforced
161103	Screen, 0.003 in., reinforced
161104	Screen, 0.004 in., reinforced
161106	Screen, 0.006 in., reinforced
161109	Screen, 0.009 in., reinforced
161112	Screen, 0.012 in., reinforced
161115	Screen, 0.015 in., reinforced
161120	Screen, 0.020 in., reinforced

Original copyright date 1971. Nordson and the Nordson logo are registered trademarks of Nordson Corporation.