

High-Pressure Fluid Filters

Customer Product Manual
Part 107971C02

OBSOLETE



NORDSON CORPORATION • AMHERST, OHIO • USA

Nordson Corporation welcomes requests for information, comments and inquiries about its products. General information about Nordson can be found on the Internet using the following address: <http://www.nordson.com>.

Address all correspondence to:

Nordson Corporation
Attn: Customer Service
555 Jackson Street
Amherst, OH 44001

Notice

This is a Nordson Corporation publication which is protected by copyright. Original copyright date 1990. No part of this document may be photocopied, reproduced, or translated to another language without the prior written consent of Nordson Corporation. The information contained in this publication is subject to change without notice.

Trademarks

Blue Box, Can Works, Century, CleanSleeve, CleanSpray, Control Coat, Cross-Cut, Easy Coat, Econo-Coat, Excel 2000, Flow Sentry, FoamMix, Horizon, Hot Shot, Isocoil, Isocore, Iso-Flo, MEG, Nordson, the Nordson logo, Package of Values, PowderGrid, Pro-Flo, PRX, RBX, Ready Coat, Rhino, SCF, Select Coat, Select Cure, Shur-Lok, Smart-Coat, System Sentry, Tribomatic, Versa-Coat, Versa-Screen, and Versa-Spray are registered trademarks of Nordson Corporation.

Accu-Jet, Auto-Flo, CanNeck, Clean Coat, CPX, EasyClean, Ink-Dot, OptiMix, PowderGrid, Pulse-Spray, Sure Coat, Swirlcoat and Walcom are trademarks of Nordson Corporation.

Table of Contents

1. Safety	1
Qualified Personnel	1
Intended Use	1
Regulations and Approvals	1
Personal Safety	2
High-Pressure Fluids	3
Fire Safety	4
Halogenated Hydrocarbon Solvent Hazards	5
Action in the Event of a Malfunction	5
Disposal	5
2. Description	6
Available Versions	7
3. Installation	8
4. Maintenance	9
Disassembly	9
5. Specifications	10
Operating Pressure (Maximum)	10
Height (Overall)	10
Base (Width x Length)	10

6. Parts	11
Using the Illustrated Parts List	11
Standard Steel Filter — $\frac{3}{8}$ -in. NPT Ports, Wall Mount	12
Optional Screens	12
Standard Steel Filter — $\frac{1}{4}$ -in. NPT Ports, Pail- or Drum-Mount Only	14
Optional Screens	14
Steel Filter — 0.002 in. Screen, $\frac{3}{8}$ -in. NPT Ports, Wall Mount	16
Optional Screens	16
Stainless Steel Filter — $\frac{1}{4}$ -in. NPT Ports, Wall Mount, with Seal	18
Optional Screens	18
Stainless Steel Filter — $\frac{3}{8}$ -in. NPT Ports, Wall Mount	20
Optional Screens	20
Stainless Steel Filter — $\frac{1}{4}$ -in. NPT Ports, Drum, Pail, or Wall Mount	22
Optional Screens	22
Kits	24
Stainless Steel Filter Rebuild Kit	24

High-Pressure Fluid Filters

1. Safety

Read and follow these safety instructions. Task- and equipment-specific warnings, cautions, and instructions are included in equipment documentation where appropriate.

Make sure all equipment documentation, including these instructions, is accessible to persons operating or servicing equipment.

Qualified Personnel

Equipment owners are responsible for making sure that Nordson equipment is installed, operated, and serviced by qualified personnel. Qualified personnel are those employees or contractors who are trained to safely perform their assigned tasks. They are familiar with all relevant safety rules and regulations and are physically capable of performing their assigned tasks.

Intended Use

Use of Nordson equipment in ways other than those described in the documentation supplied with the equipment may result in injury to persons or damage to property.

Some examples of unintended use of equipment include

- using incompatible materials
- making unauthorized modifications
- removing or bypassing safety guards or interlocks
- using incompatible or damaged parts
- using unapproved auxiliary equipment
- operating equipment in excess of maximum ratings

Regulations and Approvals

Make sure all equipment is rated and approved for the environment in which it is used. Any approvals obtained for Nordson equipment will be voided if instructions for installation, operation, and service are not followed.

Personal Safety

To prevent injury follow these instructions.

- Do not operate or service equipment unless you are qualified.
- Do not operate equipment unless safety guards, doors, or covers are intact and automatic interlocks are operating properly. Do not bypass or disarm any safety devices.
- Keep clear of moving equipment. Before adjusting or servicing moving equipment, shut off the power supply and wait until the equipment comes to a complete stop. Lock out power and secure the equipment to prevent unexpected movement.
- Relieve (bleed off) hydraulic and pneumatic pressure before adjusting or servicing pressurized systems or components. Disconnect, lock out, and tag switches before servicing electrical equipment.
- While operating manual spray guns, make sure you are grounded. Wear electrically conductive gloves or a grounding strap connected to the gun handle or other true earth ground. Do not wear or carry metallic objects such as jewelry or tools.
- If you receive even a slight electrical shock, shut down all electrical or electrostatic equipment immediately. Do not restart the equipment until the problem has been identified and corrected.
- Obtain and read Material Safety Data Sheets (MSDS) for all materials used. Follow the manufacturer's instructions for safe handling and use of materials, and use recommended personal protection devices.
- Make sure the spray area is adequately ventilated.
- To prevent injury, be aware of less-obvious dangers in the workplace that often cannot be completely eliminated, such as hot surfaces, sharp edges, energized electrical circuits, and moving parts that cannot be enclosed or otherwise guarded for practical reasons.

High-Pressure Fluids

High-pressure fluids, unless they are safely contained, are extremely hazardous. Always relieve fluid pressure before adjusting or servicing high pressure equipment. A jet of high-pressure fluid can cut like a knife and cause serious bodily injury, amputation, or death. Fluids penetrating the skin can also cause toxic poisoning.

If you suffer a fluid injection injury, seek medical care immediately. If possible, provide a copy of the MSDS for the injected fluid to the health care provider.

The National Spray Equipment Manufacturers Association has created a wallet card that you should carry when you are operating high-pressure spray equipment. These cards are supplied with your equipment. The following is the text of this card:



WARNING: Any injury caused by high pressure liquid can be serious. If you are injured or even suspect an injury:

- Go to an emergency room immediately.
- Tell the doctor that you suspect an injection injury.
- Show him this card.
- Tell him what kind of material you were spraying.

MEDICAL ALERT—AIRLESS SPRAY WOUNDS: NOTE TO PHYSICIAN

Injection in the skin is a serious traumatic injury. It is important to treat the injury surgically as soon as possible. Do not delay treatment to research toxicity. Toxicity is a concern with some exotic coatings injected directly into the bloodstream.

Consultation with a plastic surgeon or a reconstructive hand surgeon may be advisable.

The seriousness of the wound depends on where the injury is on the body, whether the substance hit something on its way in and deflected causing more damage, and many other variables including skin microflora residing in the paint or gun which are blasted into the wound. If the injected paint contains acrylic latex and titanium dioxide that damage the tissue's resistance to infection, bacterial growth will flourish. The treatment that doctors recommend for an injection injury to the hand includes immediate decompression of the closed vascular compartments of the hand to release the underlying tissue distended by the injected paint, judicious wound debridement, and immediate antibiotic treatment.

Fire Safety

To avoid a fire or explosion, follow these instructions.

- Ground all conductive equipment in the spray area. Use only grounded air and fluid hoses. Check equipment and workpiece grounding devices regularly. Resistance to ground must not exceed one megohm.
- Shut down all equipment immediately if you notice static sparking or arcing. Do not restart the equipment until the cause has been identified and corrected.
- Do not smoke, weld, grind, or use open flames where flammable materials are being used or stored.
- Do not heat materials to temperatures above those recommended by the manufacturer. Make sure heat monitoring and limiting devices are working properly.
- Provide adequate ventilation to prevent dangerous concentrations of volatile particles or vapors. Refer to local codes or your material MSDS for guidance.
- Do not disconnect live electrical circuits while working with flammable materials. Shut off power at a disconnect switch first to prevent sparking.
- Know where emergency stop buttons, shutoff valves, and fire extinguishers are located. If a fire starts in a spray booth, immediately shut off the spray system and exhaust fans.
- Shut off electrostatic power and ground the charging system before adjusting, cleaning, or repairing electrostatic equipment.
- Clean, maintain, test, and repair equipment according to the instructions in your equipment documentation.
- Use only replacement parts that are designed for use with original equipment. Contact your Nordson representative for parts information and advice.

Halogenated Hydrocarbon Solvent Hazards

Do not use halogenated hydrocarbon solvents in a pressurized system that contains aluminum components. Under pressure, these solvents can react with aluminum and explode, causing injury, death, or property damage. Halogenated hydrocarbon solvents contain one or more of the following elements:

<u>Element</u>	<u>Symbol</u>	<u>Prefix</u>
Fluorine	F	"Fluoro-"
Chlorine	Cl	"Chloro-"
Bromine	Br	"Bromo-"
Iodine	I	"Iodo-"

Check your material MSDS or contact your material supplier for more information. If you must use halogenated hydrocarbon solvents, contact your Nordson representative for information about compatible Nordson components.

Action in the Event of a Malfunction

If a system or any equipment in a system malfunctions, shut off the system immediately and perform the following steps:

- Disconnect and lock out system electrical power. Close hydraulic and pneumatic shutoff valves and relieve pressures.
- Identify the reason for the malfunction and correct it before restarting the system.

Disposal

Dispose of equipment and materials used in operation and servicing according to local codes.

2. Description

See Figure 1. Nordson high-pressure fluid filters prevent contaminants from plugging the nozzle by filtering them out of coating materials before they reach the gun. The filter assembly consists of a base assembly, housing, replaceable filter screen and a drain-off valve. These filters are available in steel or stainless steel, for wall mounting or direct mounting to a 5- or 55-gallon container lid or other equipment.

Optional screens are available in mesh sizes from 0.002 to 0.030 in. Two kits are available to change the placement of the filter to the inverted position. Operating the filter in the inverted position will eliminate drippage of paint onto the filter base during maintenance.

NOTE: Refer to the *Parts* section in this manual for ordering information on optional screens and kits.

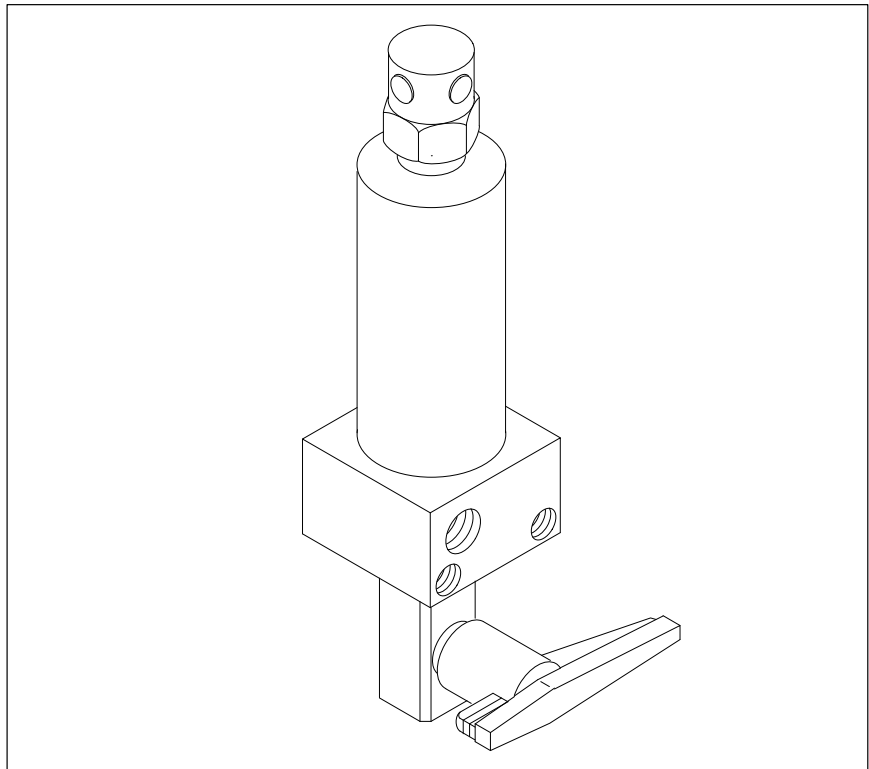


Fig. 1 Nordson High-Pressure Fluid Filter (Standard Steel Version Shown)

Available Versions

Part	Ports, inches NPT	Screen, inches	Mount
Steel:			
161 500	$\frac{1}{4}$	0.006	Drum or pail only
161 340	$\frac{3}{8}$	0.006	Wall only
161 343	$\frac{3}{8}$	0.002	Wall only
Stainless Steel:			
109 765*	$\frac{1}{4}$	0.006	Wall only
110 911	$\frac{3}{8}$	0.006	Wall only
161 510	$\frac{1}{4}$	0.006	Wall, drum, or pail
* With additional housing seal.			

3. Installation

These filters can be installed in a number of different ways depending on the system in which they will be used. Mounting bolts which can be used to mount the filter base to a wall or plate are included with each filter. Fittings and, with the drum or pail-mount versions, O-rings are also included for mounting the filter directly to a manifold block on the side of the drum or pail lid.

NOTE: Refer to the shipped loose items, as noted in the *Parts* section, for the fittings and mounting parts included with each filter.

1. Mounting:
 - a. Wall mount — Install the filter in an upright position. Orient as shown in Figure 1. Install two $\frac{5}{16}$ -20 x $2\frac{3}{4}$ -in. mounting bolts through filter base and mounting plate. Secure these with $\frac{5}{16}$ -in. lock washers and $\frac{5}{16}$ -20 hex nuts.
 - b. Drum or pail mount — part 161510 stainless steel filter: Remove the plug and O-ring from the port on the side of the base. Lubricate the O-ring with O-ring lube before installing. For parts 161510 and 161500, install the O-ring shipped with the filter into the groove around the port.
2. Wrap the threads of the fittings with PTFE tape and install them in the filter base as required. Note that the input and output ports are marked. Tighten fittings securely.
3. Connect the high-pressure fluid hoses to the fittings, making sure that the input hose is connected to the port marked IN and the output hose is connected to the port marked OUT.

NOTE: During operation, the filter assembly is in constant use. When it is first installed, shut down the system and inspect the filter screen daily to determine its scheduled cleaning requirements.

4. Maintenance

Refer to the parts illustrations for component locations.

Disassembly



WARNING: Always turn off the air supply and relieve fluid pressure at the filter drain-off valve before performing any maintenance procedures.

1. To remove the housing:
 - a. Stainless steel filters — Insert the round bar furnished with the filter into the hole in the top of the housing. Unscrew the housing from the base.
 - b. Standard steel filters — Insert the bar furnished with the filter into the hole in the bolt at the top of the housing. Unscrew the bolt and remove the housing.
 - c. Remove the screen or screen assembly with the adapter.

NOTE: Do not use a metal object to clean the mesh screen.

2. Clean the screen and the base assembly thoroughly.
3. Inspect the screen, O-rings (if used), and seal (if used). Replace them if they are damaged or worn.

To assemble the filter, reverse the procedure for disassembling the filter. Refer to the parts illustrations, if necessary.

5. Specifications

<i>Operating Pressure (Maximum)</i>	206.8 bar (3000 psi)
<i>Height (Overall)</i>	198.12 mm (7.8 in.)
<i>Base (Width x Length)</i>	63.5 x 63.5 mm (2.5 x 2.5 in.)

6. Parts

To order parts, call the Nordson Customer Service Center or your local Nordson representative. Use this five-column parts list, and the accompanying illustration, to describe and locate parts correctly.

Using the Illustrated Parts List

Numbers in the Item column correspond to numbers that identify parts in illustrations following each parts list. The code NS (not shown) indicates that a listed part is not illustrated. A dash (—) is used when the part number applies to all parts in the illustration.

The six-digit number in the Part column is the Nordson Corporation part number. A series of dashes in this column (- - - - -) means the part cannot be ordered separately.

The Description column gives the part name, as well as its dimensions and other characteristics when appropriate. Indentions show the relationships between assemblies, subassemblies, and parts.

Item	Part	Description	Quantity	Note
—	000 000	Assembly	1	A
1	000 000	• Subassembly	2	
2	000 000	• • Part	1	

- If you order the assembly, items 1 and 2 will be included.
- If you order item 1, item 2 will be included.
- If you order item 2, you will receive item 2 only.

The number in the Quantity column is the quantity required per unit, assembly, or subassembly. The code AR (As Required) is used if the part number is a bulk item ordered in quantities or if the quantity per assembly depends on the product version or model.

Letters in the Note column refer to notes at the end of each parts list. Notes contain important information about usage and ordering. Special attention should be given to notes.

**Standard Steel Filter —
3/8-in. NPT Ports, Wall Mount**

See Figure 2.

Item	Part	Description	Quantity	Note
—	161340	Filter, single, fluid	1	
1	161310	• Bolt	1	
2	161304	• Housing	1	
3	161106	• Screen, 0.006 in.	2	A
4	248325	• Base, filter	1	
5	973050	• Nipple, 3/8-in. NPT, close	1	B
6	750040	• Valve, ball	1	
7	973422	• Plug, pipe, 3/8-in. NPT	1	
NS	972180	• Elbow, 37°, 1/2-20 x 3/8-in. NPT, steel	1	C
NS	161404	• Bar	1	C
NS	981443	• Screw, socket head, 5/16-18 x 2.750	2	C
NS	972028	• Connector, male, 37°, 1/2-20 x 3/8-in. NPT, steel	1	C
NOTE A: Two screens are included: one assembled and one shipped loose. This filter can be ordered or retrofitted with one of the optional screens in the following list. B: Use PTFE paste on threads when reinstalling. C: These parts are shipped loose. NS: Not Shown				

Optional Screens

Part	Description
161102	Screen, reinforced, 0.002 in.
161103	Screen, reinforced, 0.003 in.
161104	Screen, reinforced, 0.004 in.
161106	Screen, reinforced, 0.006 in.
161109	Screen, reinforced, 0.009 in.
161112	Screen, reinforced, 0.012 in.
161115	Screen, reinforced, 0.015 in.
161120	Screen, reinforced, 0.020 in.
161020	Screen, not reinforced, 0.020 in.
161030	Screen, not reinforced, 0.030 in.

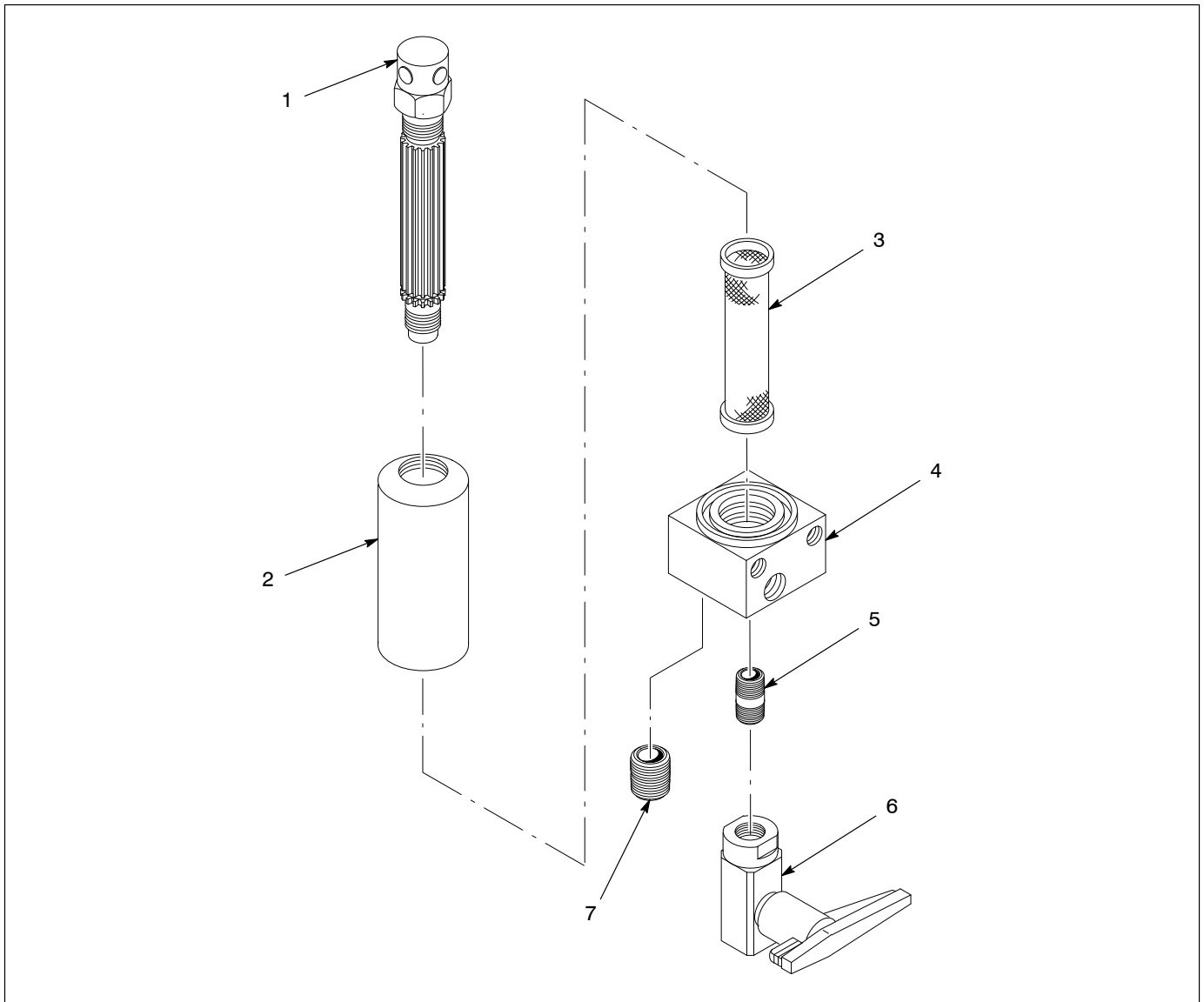


Fig. 2 Standard Steel Filter, Part 161 340

**Standard Steel Filter —
1/4-in. NPT Ports, Pail- or
Drum-Mount Only**

See Figure 3.

Item	Part	Description	Quantity	Note
—	161500	Filter, single, fluid	1	
1	161310	• Bolt	1	
2	161304	• Housing	1	
3	161106	• Screen, 0.006 in.	2	A
4	161402	• Base, filter	1	
5	973050	• Nipple, 3/8-in. NPT, close	1	B
6	750040	• Valve, ball	1	
7	973410	• Plug, pipe, 1/4-in. NPT	1	
NS	972176	• Elbow, male, 37°, 1/2-20 x 1/4-in. NPT, steel	1	C
NS	161404	• Bar	1	C
NS	981443	• Screw, socket head., 5/16-18 x 2.750	2	C
NS	972025	• Connector, Male, 37°, 1/2-20 x 1/4-in. NPT, steel	2	C
NS	700026	• Connector, hose	1	C
NS	973151	• Elbow, pipe, hydraulic, 90° street, 1/4-in. NPT, steel	1	C
NS	940170	• O-ring, hot paint, 0.688 x 0.813 x 0.063	1	C
<p>NOTE A: Two screens are included: one assembled and one shipped loose. This filter can be ordered or retrofitted with one of the optional screens in the following list.</p> <p>B: Use PTFE paste on threads when reinstalling.</p> <p>C: These parts are shipped loose.</p> <p>NS: Not Shown</p>				

Optional Screens

Part	Description
161102	Screen, reinforced, 0.002 in.
161103	Screen, reinforced, 0.003 in.
161104	Screen, reinforced, 0.004 in.
161106	Screen, reinforced, 0.006 in.
161109	Screen, reinforced, 0.009 in.
161112	Screen, reinforced, 0.012 in.
161115	Screen, reinforced, 0.015 in.
161120	Screen, reinforced, 0.020 in.
161020	Screen, not reinforced, 0.020 in.
161030	Screen, not reinforced, 0.030 in.

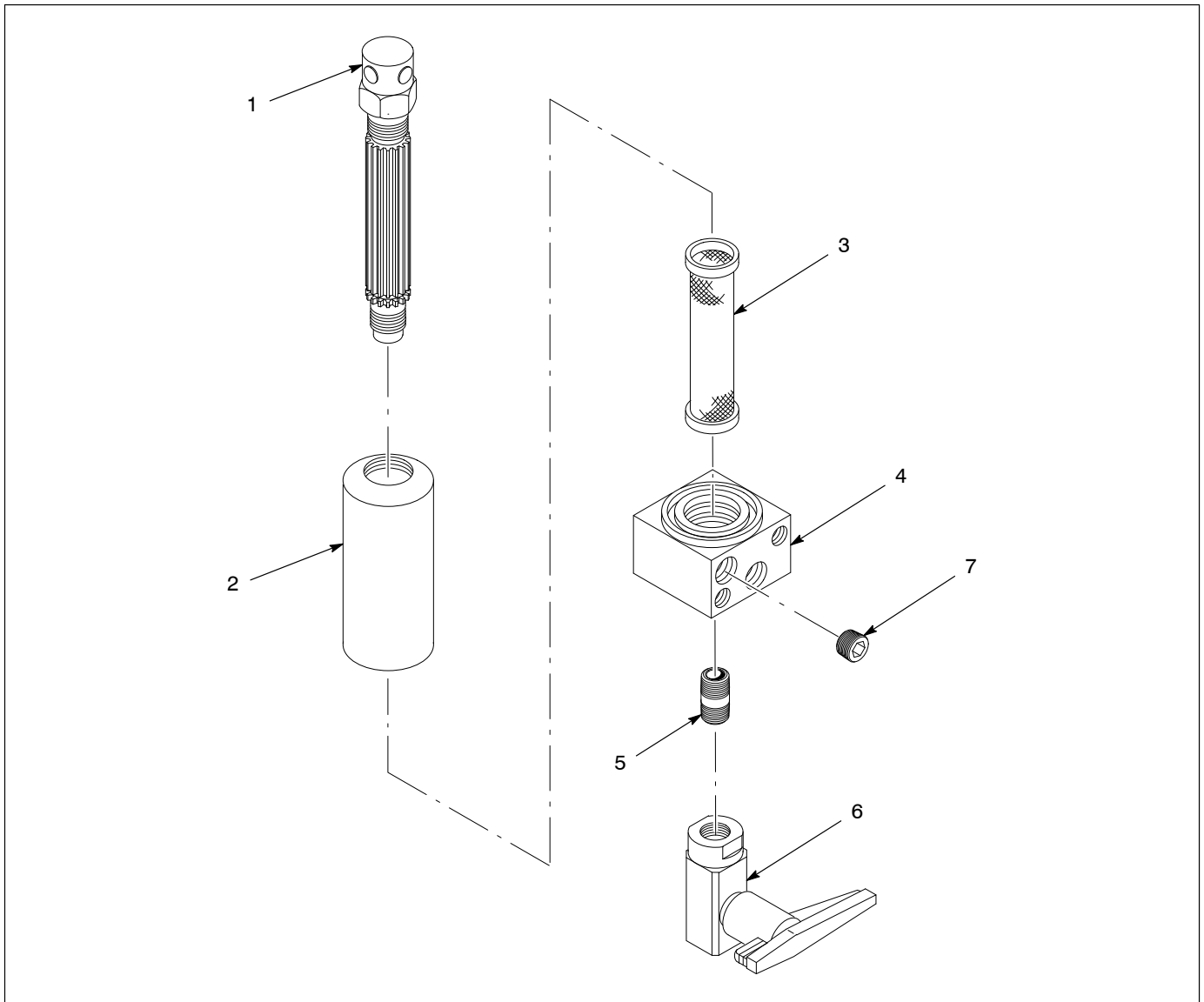


Fig. 3 Standard Steel Filter, Part 161 500

**Steel Filter — 0.002 in.
Screen, $\frac{3}{8}$ -in. NPT Ports,
Wall Mount**

See Figure 4.

Item	Part	Description	Quantity	Note
—	161343	Filter, single, fluid	1	
1	161310	• Bolt	1	
2	161304	• Housing	1	
3	161344	• Screen assembly w/adapter	1	
4	161339	• • Adapter assembly, screen	2	
5	940210	• • • O-ring, PTFE, 0.9385 x 1.063 x 0.063	1	
6	161349	• • • Adapter, screen	1	
7	161122	• • Screen, reinforced, 0.002 in.	1	A
8	248325	• Base, filter	1	
9	973422	• Plug, pipe, $\frac{3}{8}$ -in. NPT	1	
10	973050	• Nipple, $\frac{3}{8}$ -in. NPT, close	1	B
11	750040	• Valve, ball	1	
NS	972180	• Elbow, male, 37°, $\frac{1}{2}$ -20 x $\frac{3}{8}$ -in. NPT, steel	1	C
NS	161404	• Bar	1	C
NS	981443	• Screw, socket head, $\frac{5}{16}$ -18 x 2.750	2	C
NS	972028	• Connector, male, 37°, $\frac{1}{2}$ -20 x $\frac{3}{8}$ -in. NPT, steel	1	C
<p>NOTE A: Two screens are included: one assembled and one shipped loose. This filter can be retrofitted with one of the optional screens in the following list.</p> <p>B: Use PTFE paste on threads when reinstalling.</p> <p>C: These parts are shipped loose.</p> <p>NS: Not Shown</p>				

Optional Screens

Part	Description
161102	Screen, reinforced, 0.002 in.
161103	Screen, reinforced, 0.003 in.
161104	Screen, reinforced, 0.004 in.
161106	Screen, reinforced, 0.006 in.
161109	Screen, reinforced, 0.009 in.
161112	Screen, reinforced, 0.012 in.
161115	Screen, reinforced, 0.015 in.
161120	Screen, reinforced, 0.020 in.
161020	Screen, not reinforced, 0.020 in.
161030	Screen, not reinforced, 0.030 in.

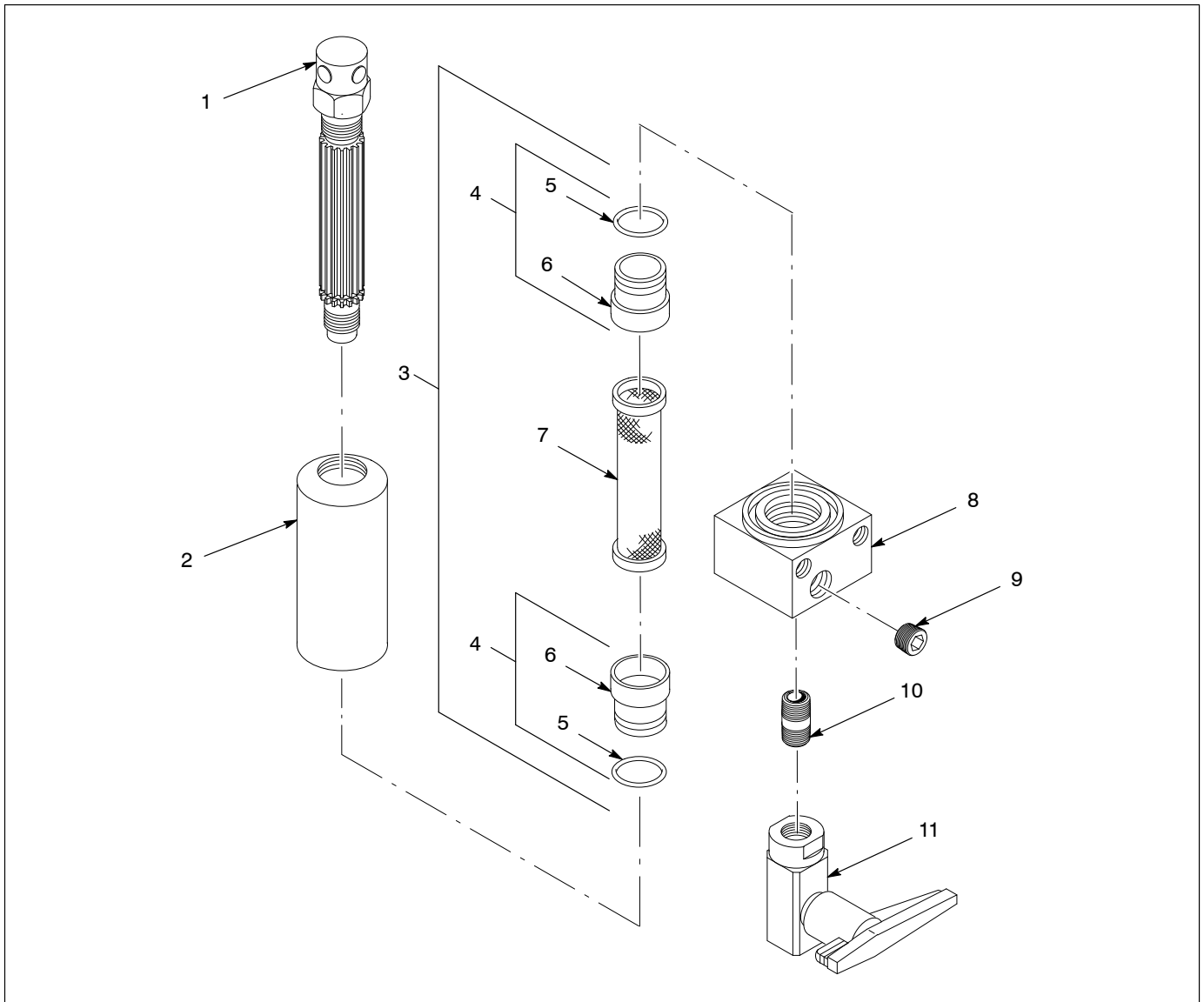


Fig. 4 Standard Steel Filter, Part 161 343

**Stainless Steel Filter —
1/4-in. NPT Ports, Wall
Mount, with Seal**

See Figure 5.

Item	Part	Description	Quantity	Note
—	109765	Filter, w/seal, stainless steel	1	A
1	161511	• Housing	1	
2	940302	• O-ring, PTFE, 1.625 x 1.750 x 0.063	1	
3	161106	• Screen, reinforced, 0.006 in.	2	
4	161517	• Support, screen	1	
5	109745	• Seal, PTFE	1	
6	109744	• Base w/seal, filter	1	
7	973415	• Plug, pipe, 1/4-in. NPT	1	B
8	973059	• Nipple, hex, 3/8 x 3/8 x 1.45, stainless steel	1	
9	750130	• Valve, ball, stainless steel	1	
NS	161404	• Bar	1	C
NS	981443	• Screw, socket head, 5/16-18 x 2.750	2	C
NS	972029	• Connector, male, 37°, 1/2-20 x 1/4-in. NPT, stainless steel	2	C
<p>NOTE A: Two screens are included: one assembled and one shipped loose. This filter can be ordered or retrofitted with one of the optional screens in the following list.</p> <p>B: Use PTFE paste on threads when reinstalling.</p> <p>C: These parts are shipped loose.</p> <p>NS: Not Shown</p>				

Optional Screens

Part	Description
161104	Screen, reinforced, 0.004 in.
161106	Screen, reinforced, 0.006 in.
161109	Screen, reinforced, 0.009 in.
161112	Screen, reinforced, 0.012 in.
161115	Screen, reinforced, 0.015 in.
161120	Screen, reinforced, 0.020 in.
161020	Screen, not reinforced, 0.020 in.
161030	Screen, not reinforced, 0.030 in.

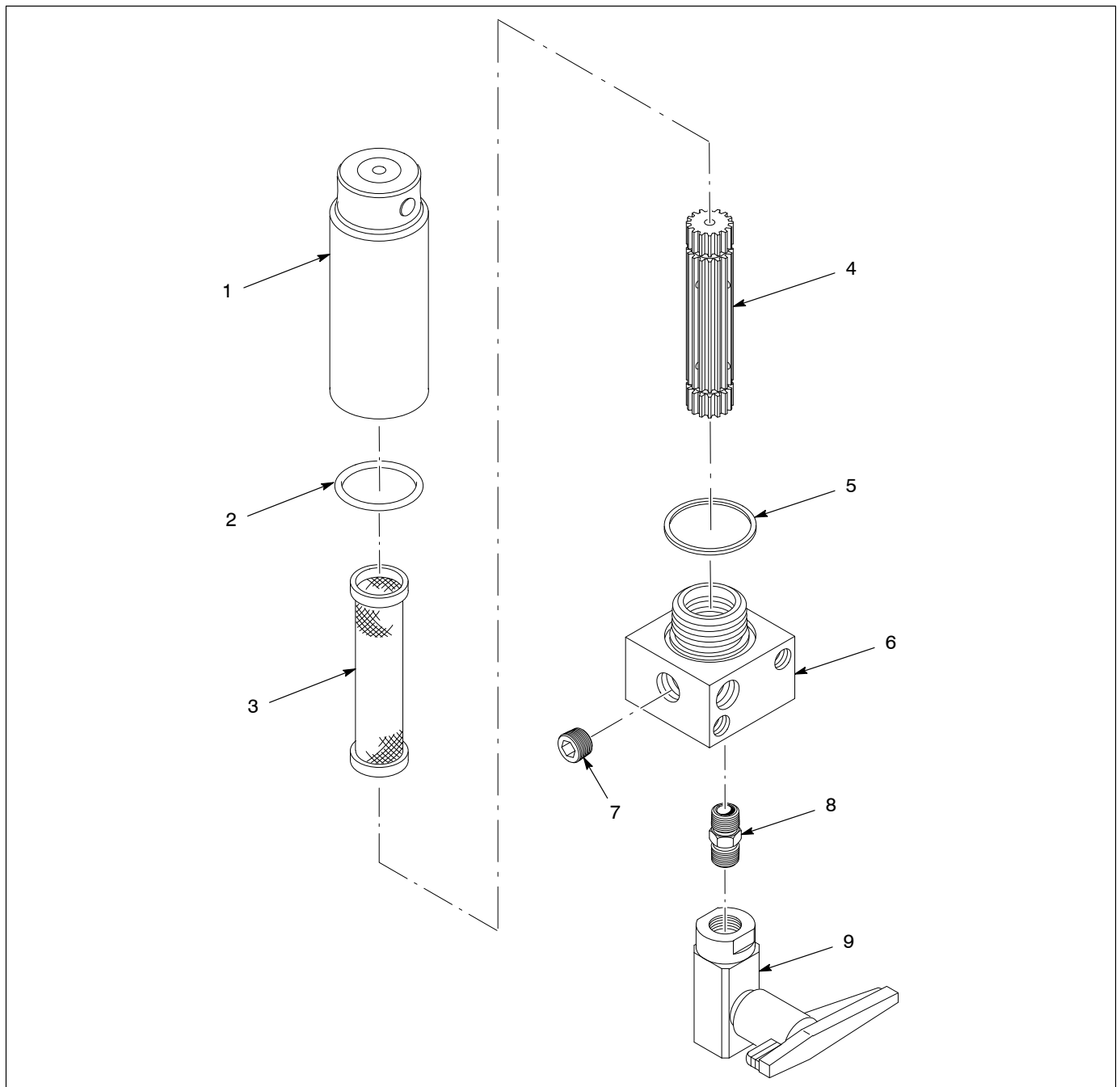


Fig. 5 Stainless Steel Filter, Part 109 765

**Stainless Steel Filter —
3/8-in. NPT Ports, Wall Mount**

See Figure 6.

Item	Part	Description	Quantity	Note
—	110911	Filter, stainless steel	1	
1	161511	• Housing	1	
2	940302	• O-ring, PTFE, 1.625 x 1.750 x 0.063	1	
3	161106	• Screen, reinforced, 0.006 in.	2	A
4	161517	• Support, screen	1	
5	110912	• Base, filter	1	
6	973423	• Plug, pipe, 1/4-in. NPT	1	
7	972099	• Connector, male, 37°, 1/2-20 x 3/8-in. NPT, stainless steel	1	
8	973059	• Nipple, Hex, 3/8 x 3/8 x 1.45, stainless steel	1	B
9	750130	• Valve, ball, stainless steel	1	
NS	161404	• Bar	1	C
NS	981443	• Screw, socket head, 5/16-18 x 2.750	2	C
NS	972718	• Elbow, male, 37°, 1/2-20 x 3/8-in. NPT, stainless steel	1	C
<p>NOTE A: Two screens are included: one assembled and one shipped loose. This filter can be ordered or retrofitted with one of the optional screens in the following list.</p> <p>B: Use PTFE paste on threads when reinstalling.</p> <p>C: These parts are shipped loose.</p> <p>NS: Not Shown</p>				

Optional Screens

Part	Description
161102	Screen, reinforced, 0.002 in.
161103	Screen, reinforced, 0.003 in.
161104	Screen, reinforced, 0.004 in.
161106	Screen, reinforced, 0.006 in.
161109	Screen, reinforced, 0.009 in.
161112	Screen, reinforced, 0.012 in.
161115	Screen, reinforced, 0.015 in.
161120	Screen, reinforced, 0.020 in.
161020	Screen, not reinforced, 0.020 in.
161030	Screen, not reinforced, 0.030 in.
161344	Screen assembly w/adaptor, 0.002 in.

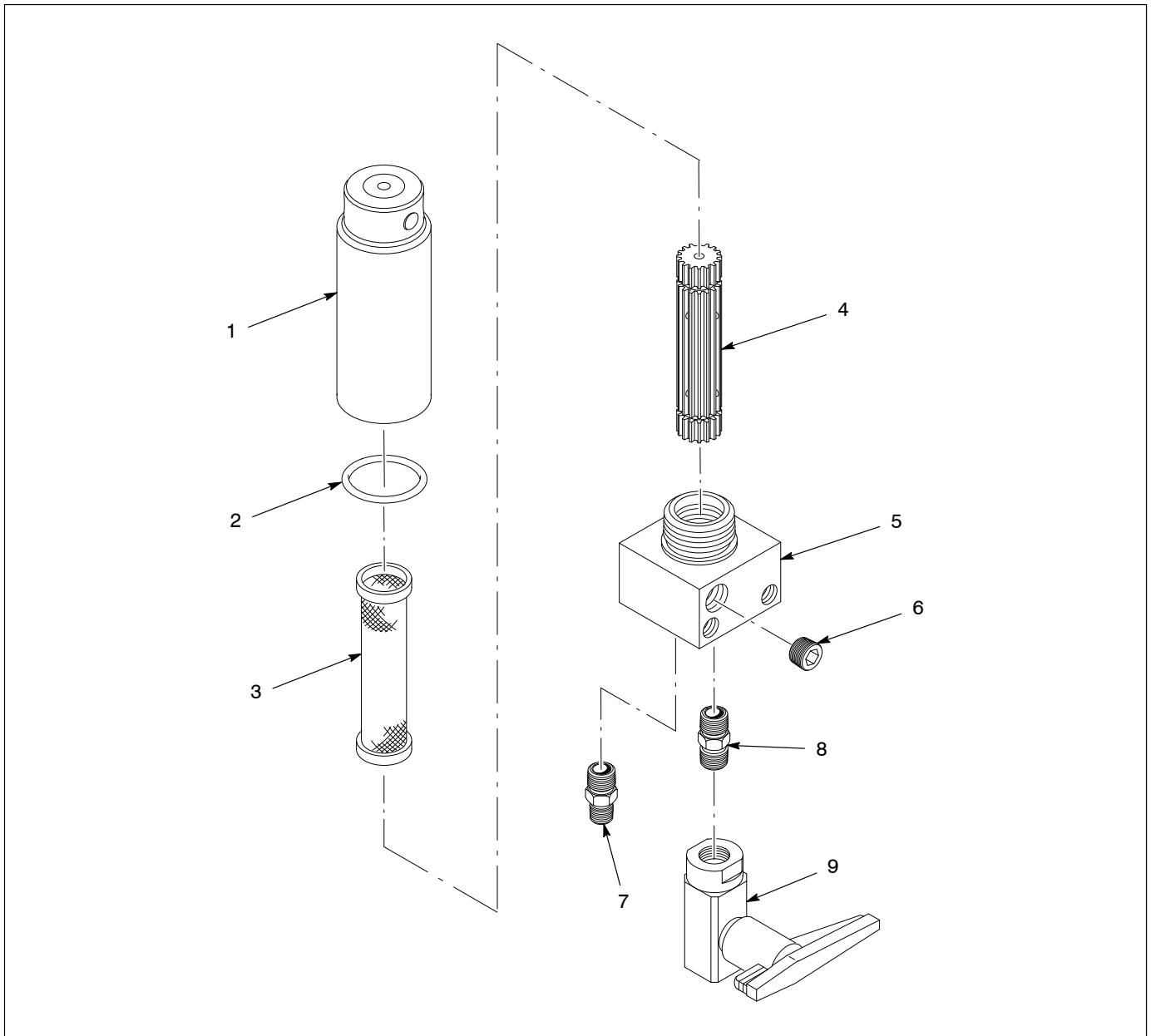


Fig. 6 Stainless Steel Filter, Part 110 911

**Stainless Steel Filter —
1/4-in. NPT Ports, Drum, Pail,
or Wall Mount**

See Figure 7.

Item	Part	Description	Quantity	Note
—	161510	Filter, stainless steel	1	
1	161511	• Housing	1	
2	940302	• O-ring, PTFE, 1.625 x 1.750 x 0.063	1	
3	161106	• Screen, reinforced, 0.006 in.	2	A
4	161517	• Support, screen	1	
5	161516	• Base, filter	1	
6	973415	• Plug, pipe, 1/4-in. NPT	1	
7	940130	• O-ring, hot paint, 0.438 x 0.563 x 0.063	1	
8	161518	• Plug, stainless steel	1	
9	973059	• Nipple, hex, 3/8 x 3/8 x 1.45, stainless steel	1	B
10	750130	• Valve, ball, stainless steel	1	
NS	161404	• Bar	1	C
NS	981443	• Screw, socket head, 5/16-18 x 2.750	2	C
NS	972029	• Connector, male, 37°, 1/2-20 x 1/4-in. NPT, stainless steel	2	C
NS	940170	• O-ring, hot paint, 0.688 x 0.813 x 0.063	1	C
<p>NOTE A: Two screens are included: one assembled and one shipped loose. This filter can be ordered or retrofitted with one of the optional screens in the following list.</p> <p>B: Use PTFE paste on threads when reinstalling.</p> <p>C: These parts are shipped loose.</p> <p>NS: Not Shown</p>				

Optional Screens

Part	Description
161102	Screen, reinforced, 0.002 in.
161103	Screen, reinforced, 0.003 in.
161104	Screen, reinforced, 0.004 in.
161106	Screen, reinforced, 0.006 in.
161109	Screen, reinforced, 0.009 in.
161112	Screen, reinforced, 0.012 in.
161115	Screen, reinforced, 0.015 in.
161120	Screen, reinforced, 0.020 in.
161020	Screen, not reinforced, 0.020 in.
161030	Screen, not reinforced, 0.030 in.

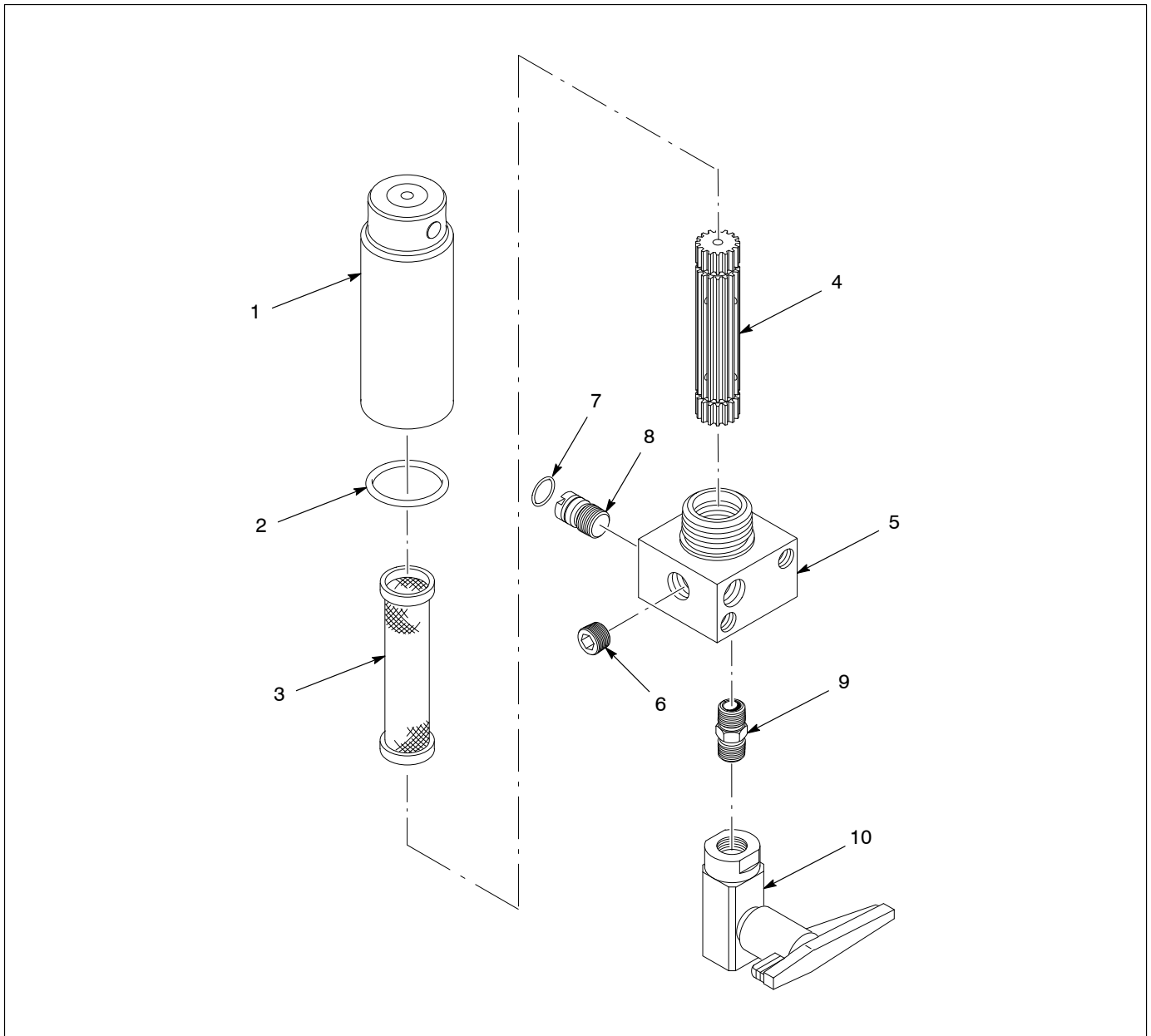


Fig. 7 Stainless Steel Filter, Part 161 510

Kits

Use the following kits to convert the stainless steel high-pressure fluid filters to the inverted position.

Stainless Steel Filter Rebuild Kit

See Figure 8.

Item	Part	Description	Quantity	Note
—	338190	Kit, rebuild, filter, stainless steel	1	
1	338844	• Screw, socket, $\frac{5}{16}$ -18 x 3.0, black oxide	2	
2	973423	• Plug, pipe, socket, standard, $\frac{3}{8}$, stainless steel	1	
3	338427	• Bracket, standoff, filter	1	
4	983532	• Washer, flat, 0.344 x 0.875 x 0.063	2	
5	983150	• Washer, lock, E, split, $\frac{5}{16}$, steel, zinc	2	
6	984140	• Nut, hex, regular, $\frac{5}{16}$ -18, steel, zinc	2	
7	940302	• O-ring, PTFE, 1.625 x 1.750 x 0.060	1	
8	337717	• Housing, filter, stainless steel	1	

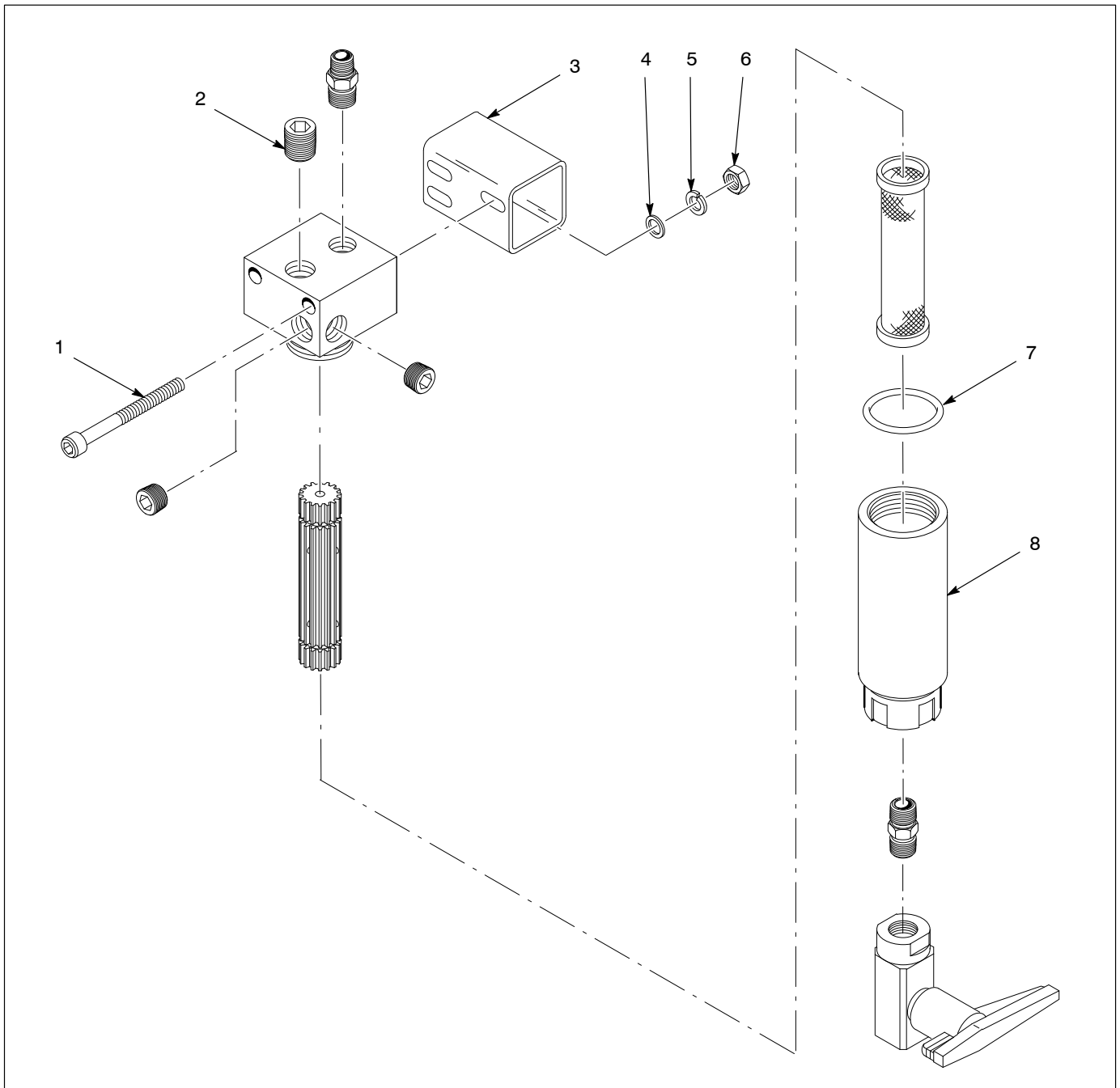
Stainless Steel Rebuild Filter Kit (contd)

Fig. 8 Stainless Steel Filter Rebuild Kit, Part 338 190

