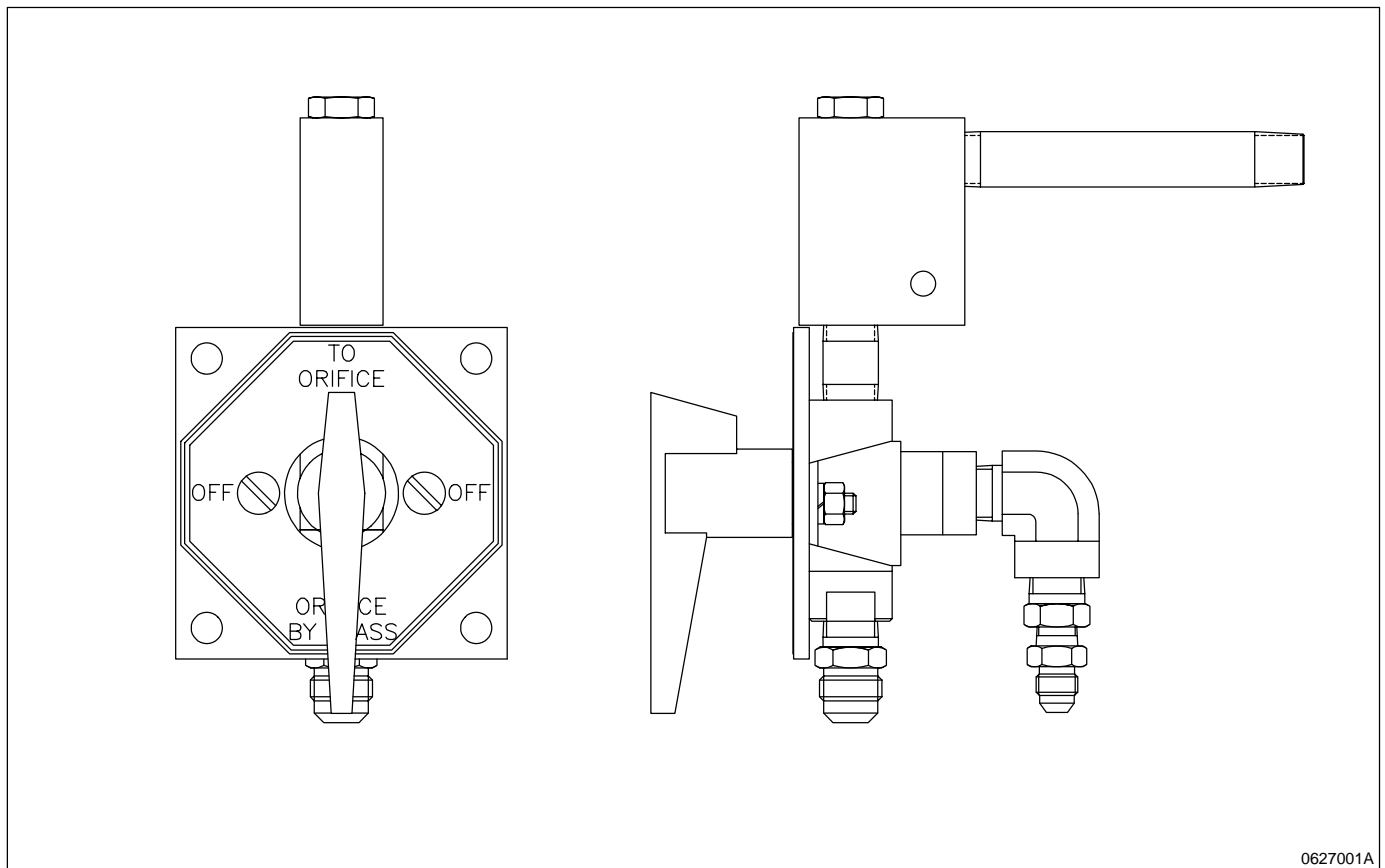


# Fixed Orifice Regulator

## 1. Introduction

The fixed orifice regulator allows an open-loop circulation path in a hydraulic system. Material is pumped through the hydraulic system to the fixed orifice regulator, where it is returned to the supply reservoir. The three-way ball valve allows the operator to dump waste fluid or solvent flush material out of the system.



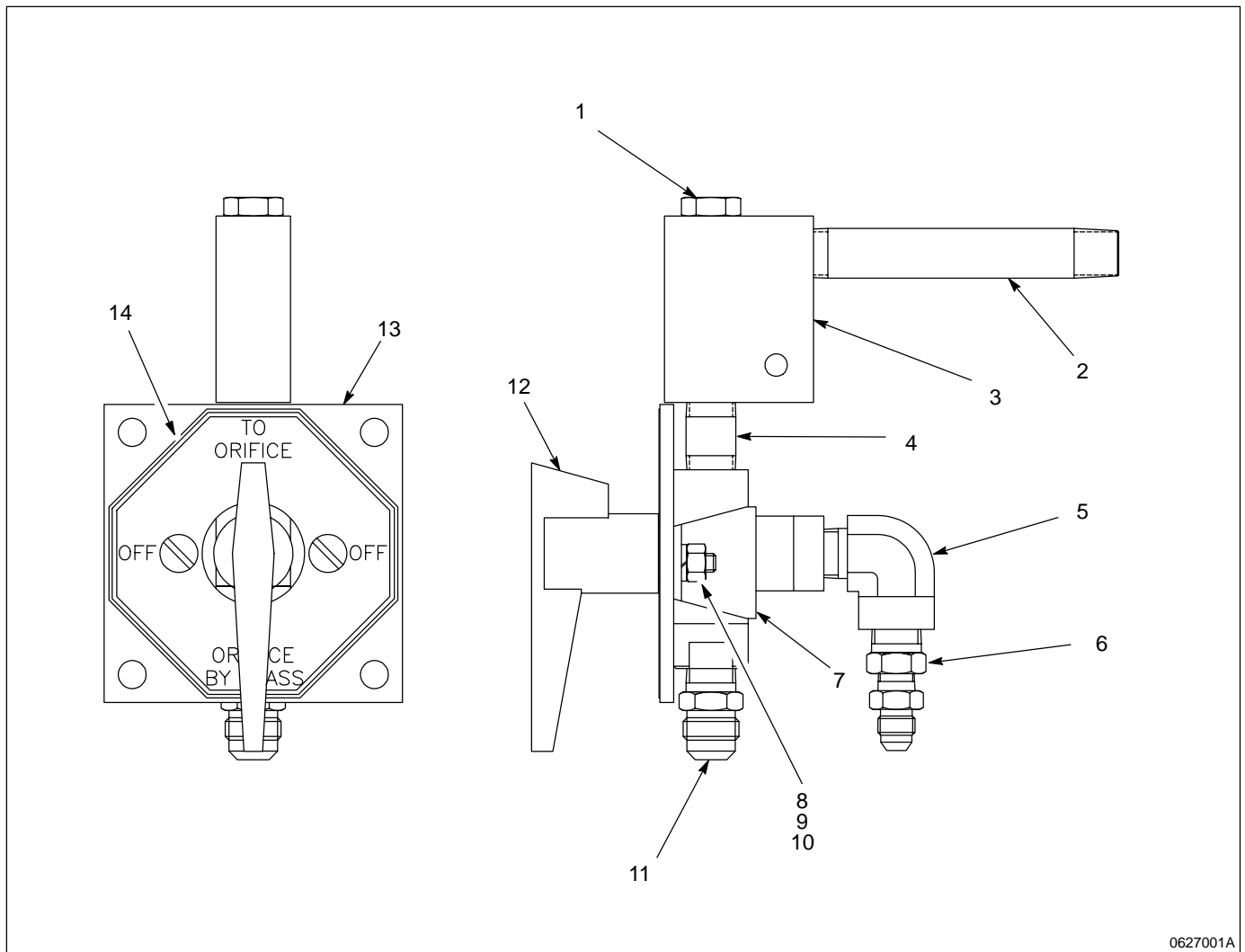
0627001A

Figure 1 Fixed orifice regulator

## 2. Fixed Orifice Regulator Parts List

See Figure 2 and refer to parts list for ordering information.

Ref.	Note	Part No.	Description	Qty.
–	A	159 933	Regulator, Fixed Orifice	1
1		248 536	• Holder, Restrictor	1
2		973 116	• Nipple, $\frac{3}{8}$ x 4.5	1
3		248 534	• Block Orifice	1
4		973 048	• Nipple, $\frac{3}{8}$ x 2	1
5		973 180	• Elbow, Pipe, $\frac{3}{8}$ , St Stl	1
6		972 099	• Connector, Male, 37, $\frac{1}{2}$ -20 x $\frac{3}{8}$ NPT	1
7		750 055	• Bracket	1
8		981 264	• Screw, Flat head, $\frac{1}{4}$ -20 x .750 SI, Zn	2
9		983 140	• Washer, Lock, $\frac{1}{4}$ , Steel	2
10		984 130	• Nut, Hex, Heavy, $\frac{1}{4}$ -20	2
11		972 103	• Connector, Male, 37, $\frac{3}{4}$ -16 x $\frac{3}{8}$ -18	1
12	B	247 673	• Valve, Ball, 3-Way, St Stl	1
13		248 533	• Plate, Valve, Mounting	1
14		248 535	• Decal, Fixed Orifice	1
NOTE A: Orifices not included. Refer to Kit List for ordering information				
B: Refer to <i>Manual 6-1C</i> (included with this manual) for detailed parts list.				



0627001A

Figure 2 Fixed orifice regulator parts

### 3. Orifice Accessory Group Kit List

See Figure 3 and refer to parts list for ordering information.

Ref.	Note	Part No.	Description	Qty.
—	A	248 537	Kit, Orifice, .010 in., .05 GPM	—
—	A	248 538	Kit, Orifice, .012 in., .06 GPM	—
—	A	248 539	Kit, Orifice, .015 in., .09 GPM	—
—	A	248 540	Kit, Orifice, .018 in., .14 GPM	—
—	A	248 541	Kit, Orifice, .020 in., .16 GPM	—
—	A	248 542	Kit, Orifice, .025 in., .27 GPM	—
—	A	248 543	Kit, Orifice, .033 in., .44 GPM	—
—	A	248 544	Kit, Orifice, .040 in., .68 GPM	—
—	A	248 545	Kit, Orifice, .050 in., 1.00 GPM	—
—	A	248 546	Kit, Orifice, .060 in., 1.80 GPM	—
—	A	248 547	Kit, Orifice, .070 in., 2.45 GPM	—
—	A	248 548	Kit, Orifice, .080 in., 3.20 GPM	—
—	A	248 549	Kit, Orifice, .100 in., 5.00 GPM	—
—	A	248 550	Kit, Orifice, .120 in., 7.20 GPM	—
—	A	248 551	Kit, Orifice, .140 in., 9.80 GPM	—
—	A	248 552	Kit, Orifice, .160 in., 12.8 GPM	—
—	A	248 537	Kit, Orifice, .010 in., .05 GPM	—
1		945 046	• O-ring, Viton®, $\frac{5}{16}$ in. O.D. Tube	1
2		940 113	• O-Ring, Viton, .312 x .438 x .07	1
3		986 119	• Ring, Back-up, Single, .312 x .438	1
4		986 024	• Ring, Retaining, .31 in. Bowed	1
5	B	029 910	• Restrictor, .010 in.	1
5	B	029 912	• Restrictor, .012 in.	1
5	B	029 915	• Restrictor, .015 in.	1
5	B	029 918	• Restrictor, .018 in.	1
5	B	029 920	• Restrictor, .020 in.	1
5	B	029 925	• Restrictor, .025 in.	1
5	B	029 933	• Restrictor, .033 in.	1
5	B	029 940	• Restrictor, .040 in.	1

NOTE A: The flow rate (GPM) is based on H<sub>2</sub>O @500 PSI.

B: The restrictor size matches orifice kit size.

*Continued on next page*

### 3. Orifice Accessory Group Kit List (contd.)

Ref.	Note	Part No.	Description	Qty.
5	B	029 950	• Restrictor, .050 in.	1
5	B	029 980	• Restrictor, .060 in.	1
5	B	029 981	• Restrictor, .070 in.	1
5	B	029 982	• Restrictor, .080 in.	1
5	B	029 983	• Restrictor, .100 in.	1
5	B	029 984	• Restrictor, .120 in.	1
5	B	029 985	• Restrictor, .140 in.	1
5	B	029 986	• Restrictor, .160 in.	1

NOTE A: The flow rate (GPM) is based on H<sub>2</sub>O @500 PSI.

B: The restrictor size matches orifice kit size.

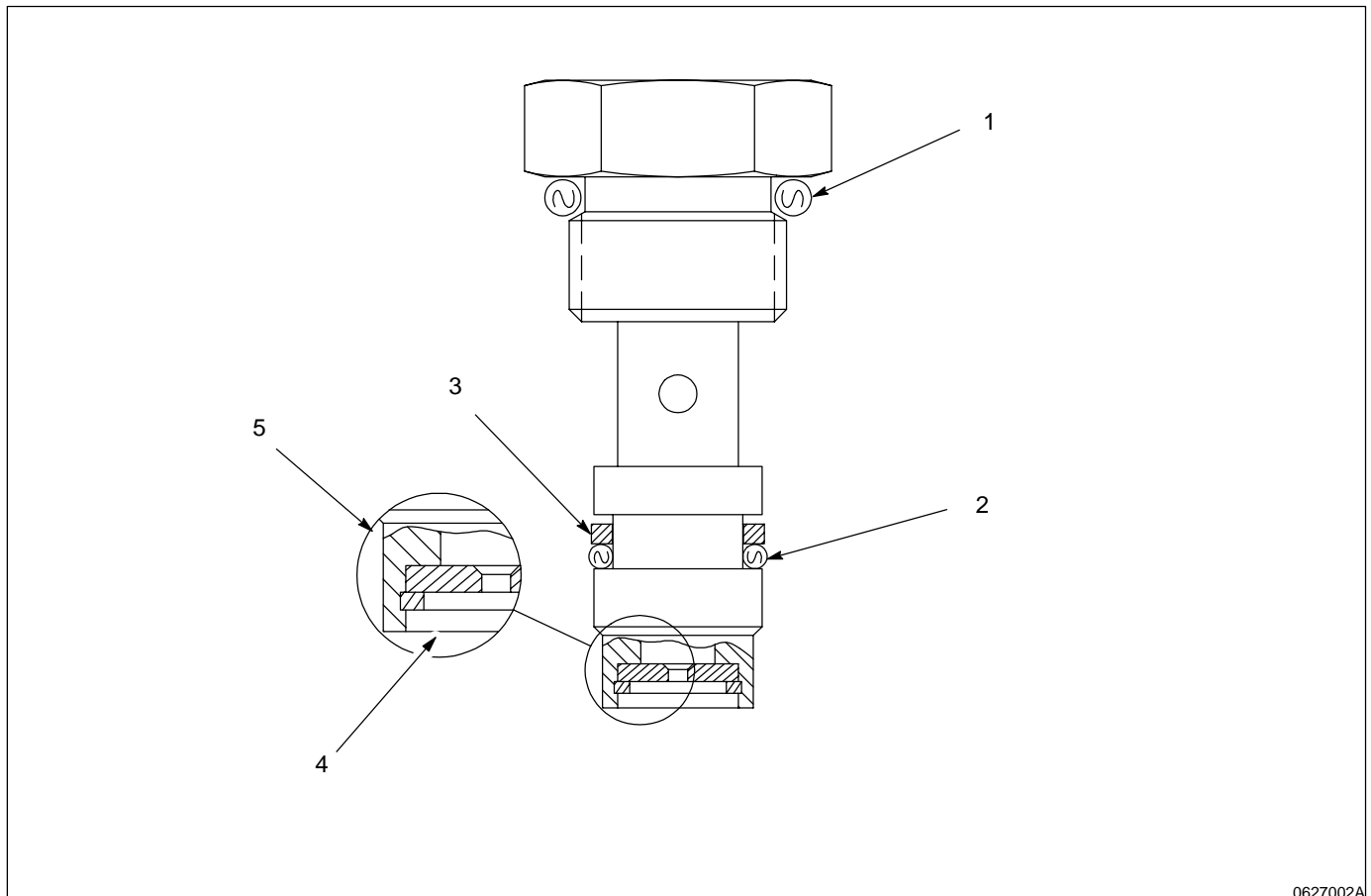


Figure 3 Orifice accessory group

Nordson and the Nordson logo are registered trademarks of Nordson Corporation.

Viton is a registered trademark of E.I. DuPont de Nemours & Co.