

# **EP-2 Si Three-Piston Pump**

Customer Product Manual

Part 1064658\_03

Issued 04/15

**For parts and technical support, call the Industrial Coating  
Systems Customer Support Center at (800) 433-9319 or  
contact your local Nordson representative.**

This document is subject to change without notice.  
Check <http://emanuals.nordson.com> for the latest version.

---



NORDSON CORPORATION • AMHERST, OHIO • USA

# Table of Contents

<b>Repair Preparations</b> .....	<b>1</b>	<b>Pump Installation</b> .....	<b>17</b>
Removing the Pump .....	2	<b>Parts</b> .....	<b>18</b>
Checking Cam Shaft End Play .....	3	Using the Illustrated Parts List .....	18
Draining the Oil .....	4	EP-2 Si Three-Piston Pump .....	19
<b>Fluid Section Rebuild</b> .....	<b>5</b>	Fluid Section Service Kits .....	20
Disassembling the Fluid Section .....	5	Diaphragm Kit .....	20
Diaphragm Installation .....	6	Valve Repair Kit .....	20
Check Valve Installation .....	8	Hydraulic Section Service Kits .....	21
Assembling the Fluid Section .....	9	Shaft Seal Kit .....	21
<b>Hydraulic Section Rebuild</b> .....	<b>10</b>	Piston Assembly Kit .....	21
Pump Housing Disassembly .....	10	Plunger Kit .....	21
Rebuilding the Pistons .....	12	Oil Cap .....	21
Disassembly .....	12	Upgrade Kit .....	22
Rebuilding .....	12	Optional Oil Change Suction Gun .....	23
Pump Housing Assembly .....	14		
Plunger Installation .....	16		
Assemble the Fluid Section .....	17		

---

## Contact Us

Nordson Corporation welcomes requests for information, comments, and inquiries about its products. General information about Nordson can be found on the Internet using the following address:  
<http://www.nordson.com>.

Address all correspondence to:  
Nordson Corporation  
Attn: Customer Service  
555 Jackson Street  
Amherst, OH 44001

## Notice

This is a Nordson Corporation publication which is protected by copyright. Original copyright date 2005. No part of this document may be photocopied, reproduced, or translated to another language without the prior written consent of Nordson Corporation. The information contained in this publication is subject to change without notice.

---

## Trademarks

Nordson and the Nordson logo are registered trademarks of Nordson Corporation.

Loctite is a registered trademark of Loctite Corporation.





# EP-2 Si Three-Piston Pump

## Repair Preparations



**WARNING:** Allow only qualified personnel to perform the following tasks. Follow the safety instructions in this document and all other related documentation.



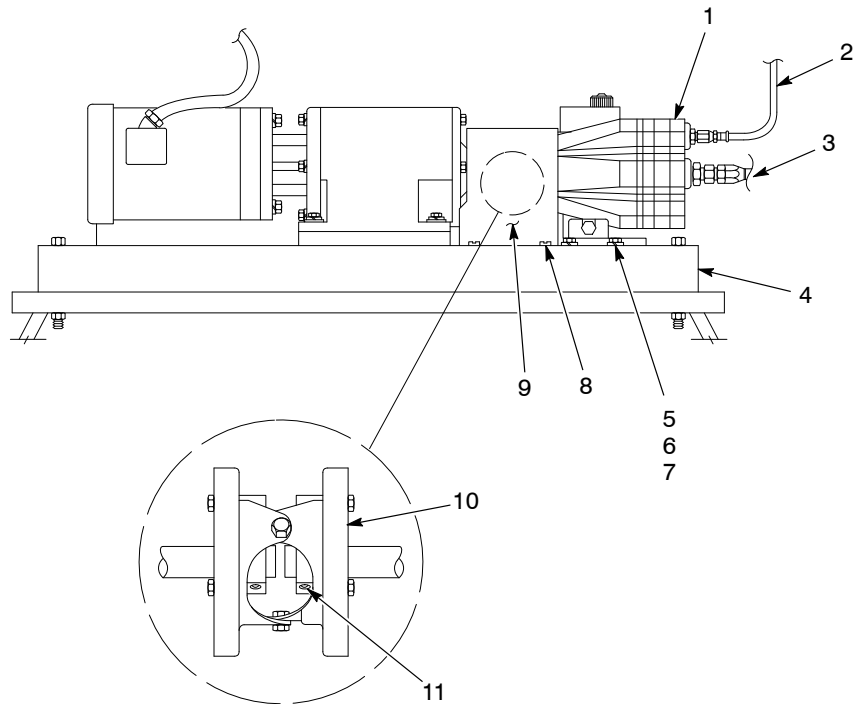
**WARNING:** System or material pressurized. Relieve pressure. Failure to observe this warning may result in serious injury.

Before you repair the pump, perform the following procedures:

Procedure	Page
<i>Removing the Pump</i>	2
<i>Checking Cam Shaft End Play</i>	3
<i>Draining the Oil</i>	4

## Removing the Pump

1. Turn off and lock out power to the pumping system.
2. See Figure 1. Remove the screws (8) securing the shroud (9).
3. Loosen the set screws (11) on the coupling (10).
4. Disconnect the output and input hoses (2, 3).
5. Remove the screws (5), lock washers (6), and flat washers (7) securing the pump (1) to the frame (4).



1200482A

Figure 1 Removing the Pump

- |                |                |
|----------------|----------------|
| 1. Pump        | 7. Flat washer |
| 2. Output hose | 8. Screw       |
| 3. Input hose  | 9. Shroud      |
| 4. Frame       | 10. Coupling   |
| 5. Screw       | 11. Set screw  |
| 6. Lock washer |                |

## Checking Cam Shaft End Play

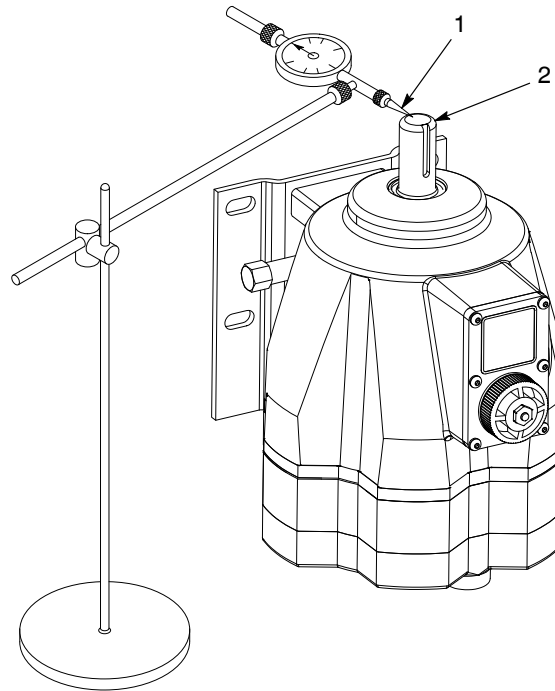
Check the cam shaft end play before replacing any parts or rebuilding the pump. A dial indicator and arbor press are required to do this.

1. See Figure 2. Position the dial indicator tip (1) on the end of the cam shaft (2).



**CAUTION:** Use extreme care when operating the arbor press. Excessive force may cause damage to the cam shaft bearings and races.

2. Use the arbor press (not shown) to check cam shaft end play. If the cam shaft end play exceeds 0.18 mm (0.007 in.), replace the pump. If the cam shaft end play is less than 0.18 mm (0.007 in.), perform required maintenance.



1200524A

Figure 2 Checking Cam Shaft End Play

1. Dial indicator tip

2. Cam shaft

## Draining the Oil

**NOTE:** To reduce the draining time, order the optional quick oil change kit. Refer to *Optional Oil Change Suction Gun* on page 23 for the part number.

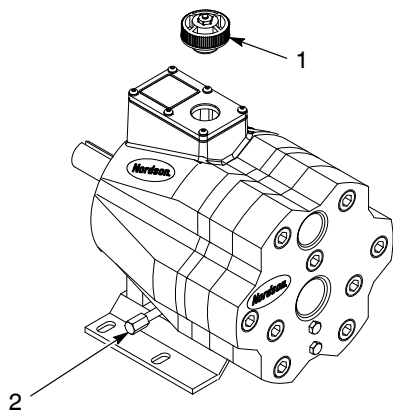
1. Place a pan or absorbent material under the pump.



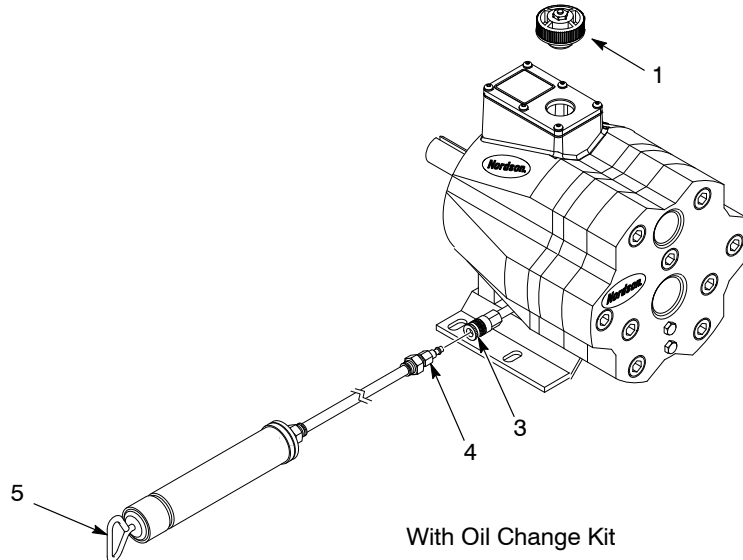
**CAUTION:** To prevent losing the oil prime in the piston assemblies, never rotate the pump shaft during routine oil changes.

2. Drain the oil from the pump housing with or without the optional oil change kit:

Without the Optional Suction Gun	With the Optional Suction Gun
<ol style="list-style-type: none"> <li>See Figure 3. Remove the oil fill cap (1) from the pump.</li> <li>Remove the drain plug (2).</li> <li>Install the drain plug after the oil has drained.</li> </ol>	<ol style="list-style-type: none"> <li>See Figure 3. Remove the oil fill cap (1) from the pump.</li> <li>Connect the suction gun fitting (4) to the drain fitting (3).</li> <li>Pull the handle (5) to draw the oil out of the pump.</li> <li>Disconnect the suction gun fitting from the drain fitting.</li> </ol>



Without Oil Change Kit



With Oil Change Kit

1200525A

Figure 3 Draining the Oil

1. Fill cap
2. Drain plug

3. Drain fitting
4. Suction gun fitting

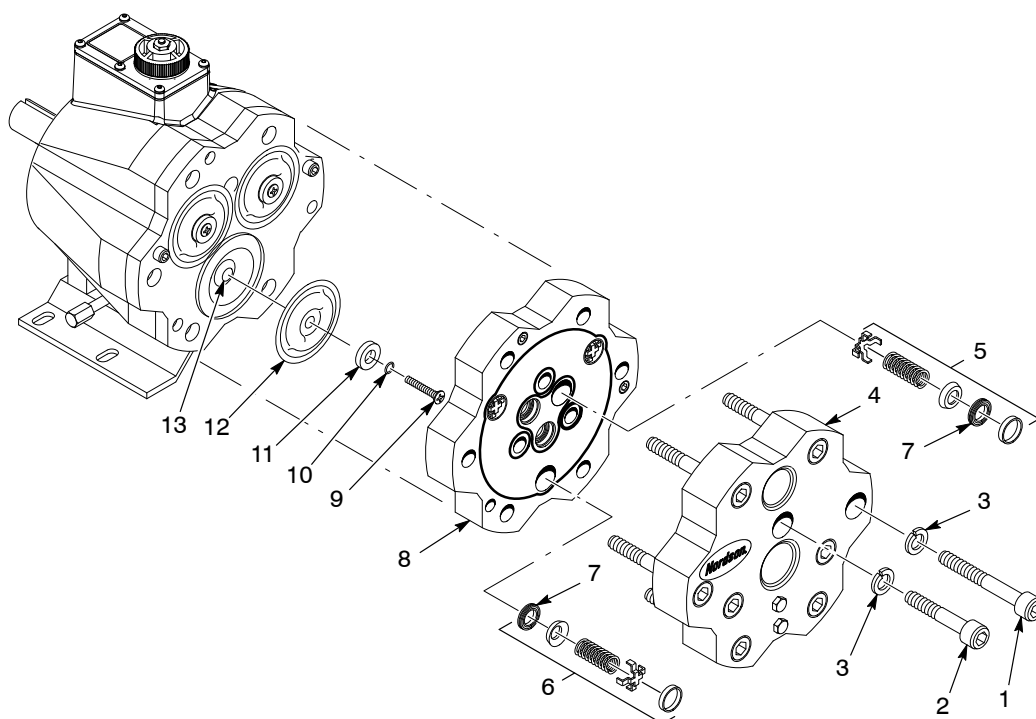
5. Handle



# Fluid Section Rebuild

## Disassembling the Fluid Section

1. See Figure 4. Remove the screws (1, 2) and lock washers (3) securing the end plate (4) to the pump housing.
2. Use a valve/seat removal tool to remove the inlet and outlet valve assemblies (5, 6) and valve seats (7) from the valve plate (8). Inspect the valves and seats for wear or obstruction. Replace or clean them as necessary.



1200526A

Figure 4 Disassembling the Fluid Section

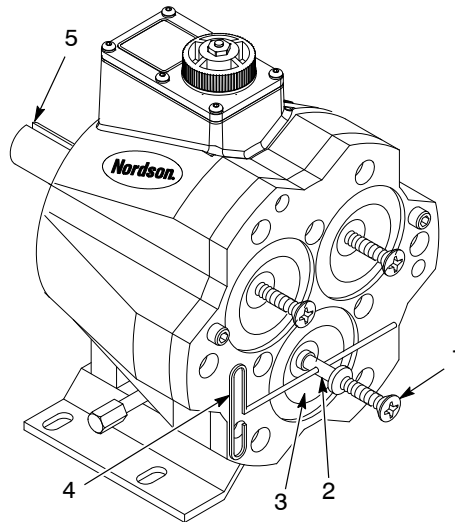
- |                              |                          |                   |
|------------------------------|--------------------------|-------------------|
| 1. Socket head screw (long)  | 6. Outlet valve assembly | 10. O-ring        |
| 2. Socket head screw (short) | 7. Valve seat            | 11. Follower      |
| 3. Lock washer               | 8. Valve plate           | 12. Diaphragm     |
| 4. End plate                 | 9. Diaphragm screw       | 13. Plunger shaft |
| 5. Inlet valve assembly      |                          |                   |

## Disassembling the Fluid Section *(contd)*

3. See Figure 4. Remove each diaphragm using the following steps:
  - a. The keyway on the shaft corresponds to the high spot on the cam. Use the shaft rotator tool to rotate the shaft until a plunger is aligned with the keyway.
  - b. Pull on the diaphragm screw (9) until you expose a drilled cross hole in the plunger shaft (13). Insert a wrench into the cross hole. See Figure 5 for cross hole and wrench location.
  - c. Remove the diaphragm screw, O-ring (10), follower (11), and diaphragm (12) from the plunger shaft.

## Diaphragm Installation

1. See Figure 5. To prevent air from being drawn in through the pump plungers during priming, install the diaphragm screws (1) into the plunger shafts (2).
- NOTE:** The oil level must always be 12 mm ( $1/2$  in.) from the top of the fill port.
2. The keyway on the shaft corresponds to the high spot on the cam. Use the shaft rotator tool to rotate the shaft until a plunger is aligned with the keyway.
  3. Install the diaphragms using the following steps:
    - a. Pull the diaphragm screw (1) until you expose a drilled cross hole on the plunger shaft (2). Insert a wrench (4) into the drilled cross hole.
    - b. Remove the diaphragm screw from the plunger shaft.



1200527A

Figure 5 Installing Screws into the Plunger Shafts

- |                    |           |
|--------------------|-----------|
| 1. Diaphragm screw | 4. Wrench |
| 2. Plunger shaft   | 5. Shaft  |
| 3. Plunger         |           |

- c. See Figure 6. Install the O-ring (5) and follower (3) on the screw (4).
- d. Insert the diaphragm screw (4) through the diaphragm (2).
- e. Apply adhesive (included in diaphragm kit) to the end portion of the screw.
- f. Install the diaphragm assembly on the plunger shaft (6).
- g. Remove the wrench (7).
- h. Repeat steps a–g for the remaining diaphragms.

**NOTE:** The oil level must always be 12 mm ( $1/2$  in.) from the top of the fill port.

4. Install the oil fill cap (1).

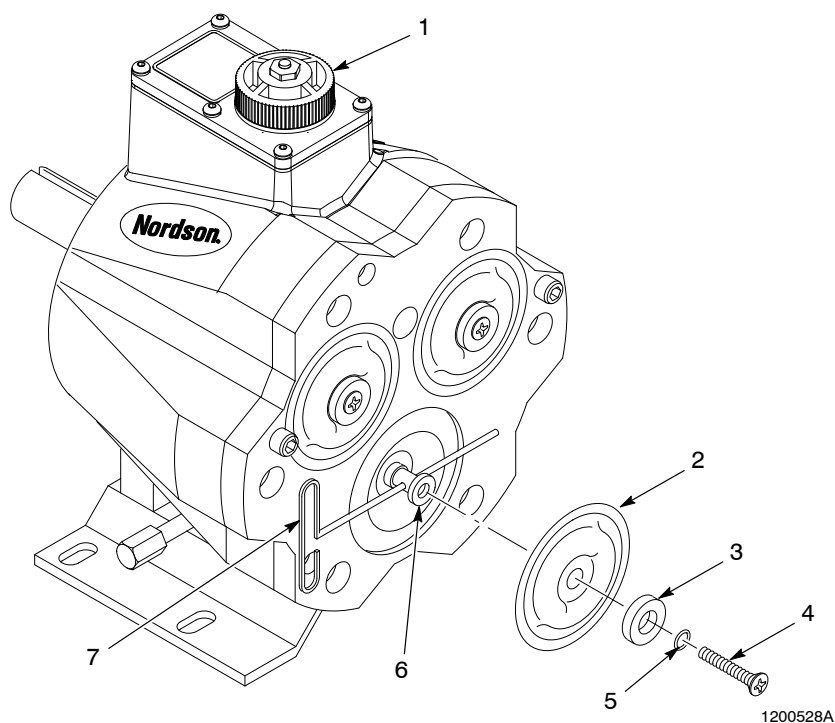


Figure 6 Diaphragm Installation

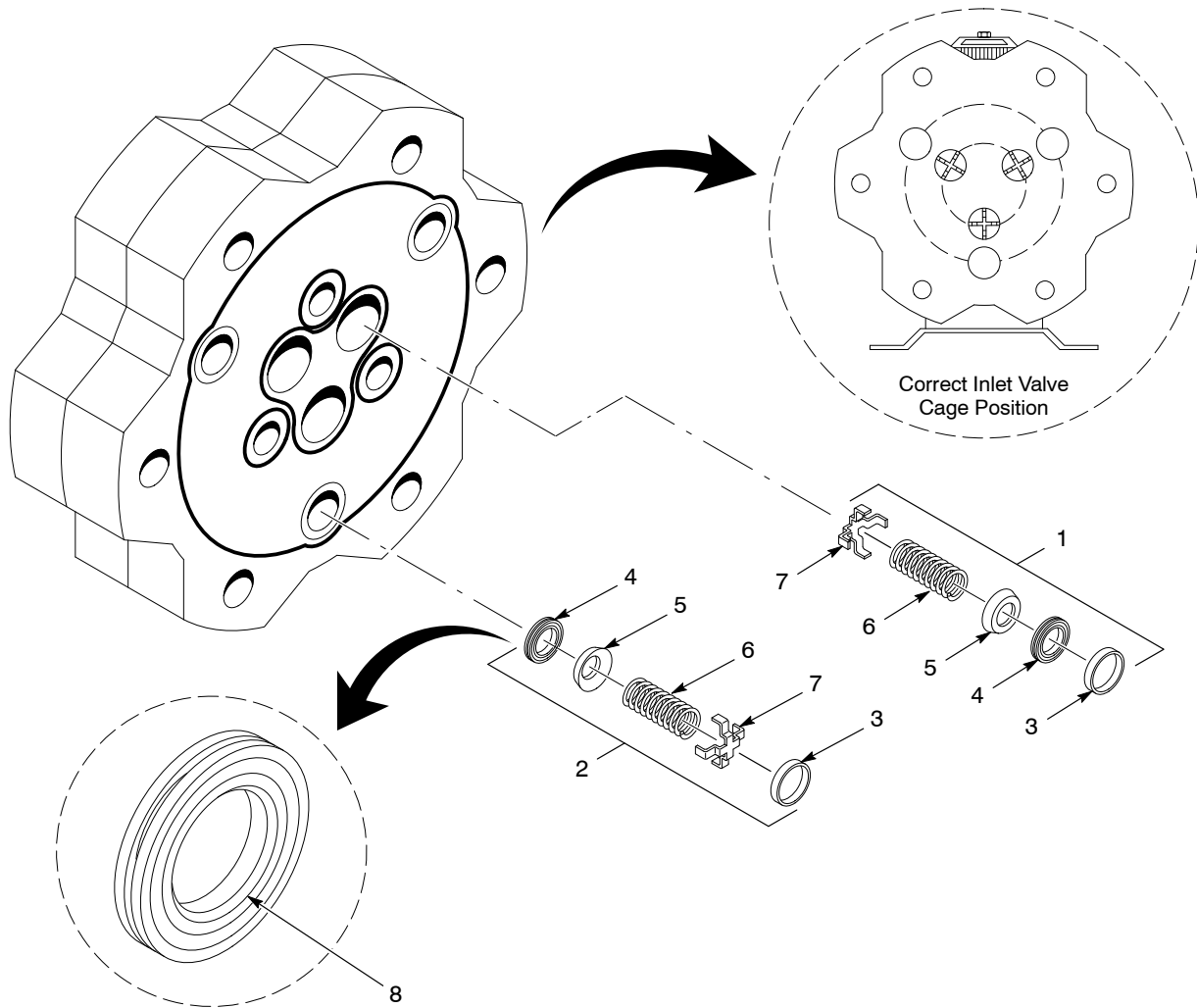
- |              |                  |
|--------------|------------------|
| 1. Fill cap  | 5. O-ring        |
| 2. Diaphragm | 6. Plunger shaft |
| 3. Follower  | 7. Wrench        |
| 4. Screw     |                  |

## Check Valve Installation

See Figure 7. Install the inlet and outlet check valves (1, 2) as illustrated.

Each valve seat (4) has grooves on one side with a beveled edge (8) on the inner diameter. The valve (5), spring (6), cage (7), and spacer (3) must be installed on this side.

**NOTE:** To help support the diaphragms during operation, position the inlet valve cage so one leg partially blocks the inlet port (as illustrated).



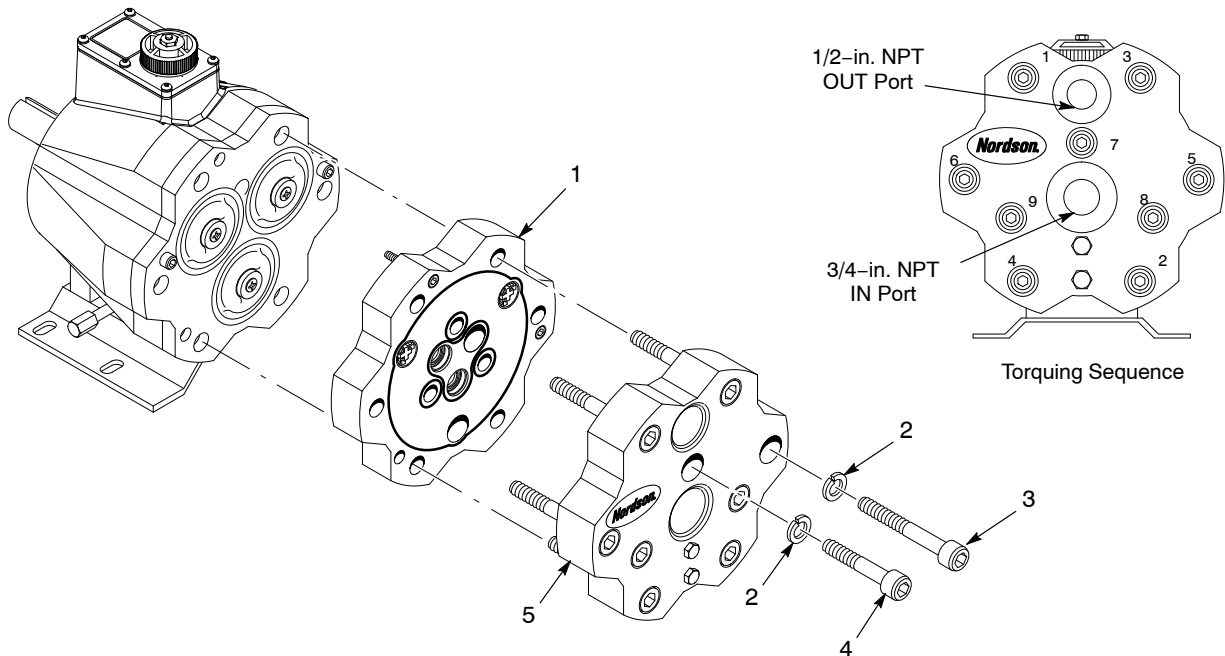
1200134A

Figure 7 Check Valve Installation

- |                       |               |                 |
|-----------------------|---------------|-----------------|
| 1. Inlet check valve  | 4. Valve seat | 7. Cage         |
| 2. Outlet check valve | 5. Valve      | 8. Beveled edge |
| 3. Spacer             | 6. Spring     |                 |

## Assembling the Fluid Section

1. See Figure 8. Use the screws (3, 4) and lock washers (2) to install the valve plate (1) and end plate (5). Torque screws to 74–81 N•m (55–60 ft-lb). Follow the torquing sequence shown in the illustration.
2. Prime the pump:
  - a. Plug the pump's OUT port and connect a regulated air supply to the IN port.
  - b. Turn the shaft  $\frac{1}{4}$  turn and remove the oil fill cap.
  - c. Apply 0.3–0.7 bar (5–10 psi) to the IN port.
  - d. Turn the shaft several more rotations until no more air bubbles come out of the reservoir.
  - e. Add EP-2 oil to the reservoir until the level is 12 mm ( $\frac{1}{2}$  in.) from the top of the fill port.
3. Install the pump on the frame. Refer to *Pump Installation* on page 17.



1200529A

Figure 8 Assembling the Fluid Section

- |                |                              |              |
|----------------|------------------------------|--------------|
| 1. Valve plate | 3. Socket head screw (long)  | 5. End plate |
| 2. Lock washer | 4. Socket head screw (short) |              |

## Hydraulic Section Rebuild

**NOTE:** Before rebuilding the hydraulic section, make sure you have all the replacement parts and the EP tool kit.

### ***Pump Housing Disassembly***

1. Remove the pump. Refer to *Removing the Pump* on page 2.
2. Drain oil from the pump housing. Refer to *Draining the Oil* on page 4.
3. Remove the end, valve, and diaphragms. Refer to *Disassembling the Fluid Section* on page 5.
4. See Figure 9. Remove the bolts (7) securing the cylinder casting (8). To even the load from the springs, alternate turns on the bolts.
5. Lift the cylinder casting off and turn it face down.
6. Remove the cam shaft assembly (4) from the pump housing (1). Inspect the shaft (6) for burrs. If any burrs exist, smooth them out.
7. Inspect the cam shaft assembly bearings (5) and bearing race for any damage or wear. Replace the pump if they are damaged or worn.
8. Remove the O-ring (3) from the pump housing.



**CAUTION:** Use extreme care when removing shaft seals to prevent scratching or denting the inside of the pump housing.

9. Place a 32–33 mm ( $1\frac{1}{4}$ - to  $1\frac{5}{16}$ -in.) diameter rod on the pump shaft seals (2). Carefully tap the rod to remove the seals from the pump housing.

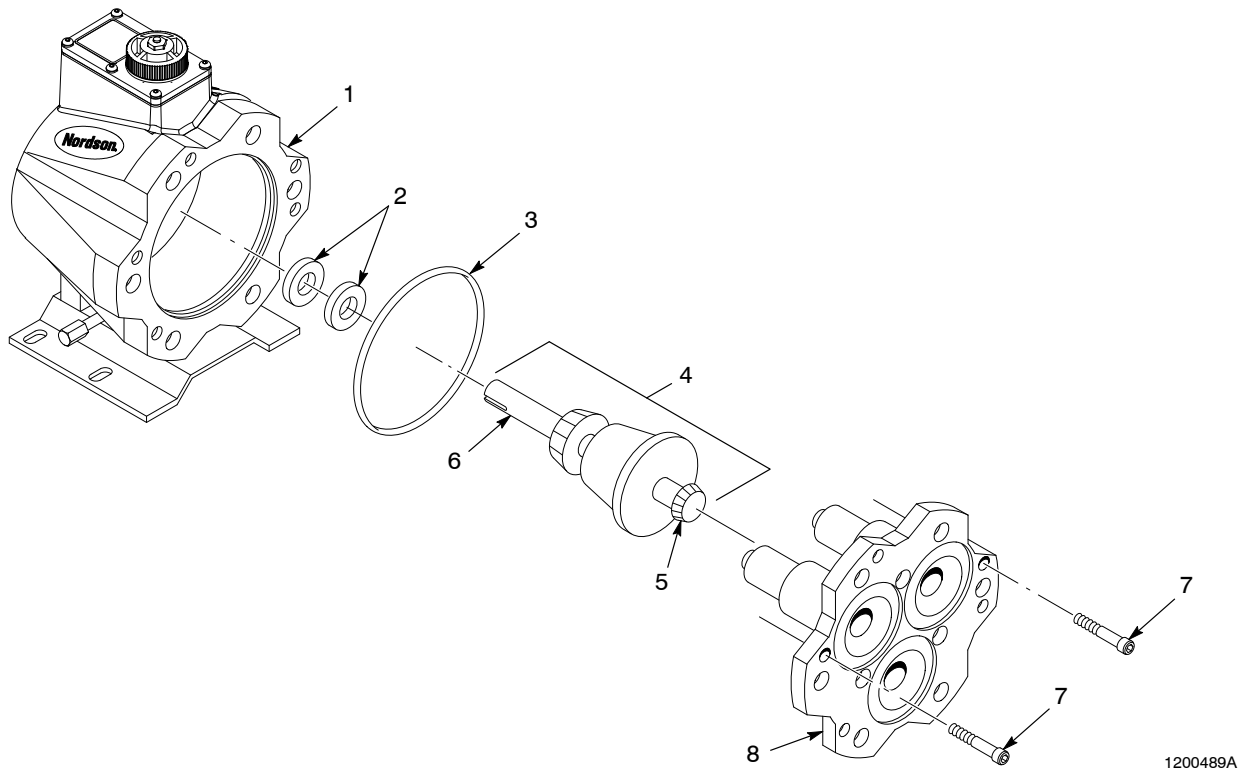


Figure 9 Pump Housing Disassembly

- |                 |                                |                     |
|-----------------|--------------------------------|---------------------|
| 1. Pump housing | 4. Cam shaft assembly          | 7. Bolts            |
| 2. Shaft seals  | 5. Shaft                       | 8. Cylinder casting |
| 3. O-ring       | 6. Cam shaft assembly bearings |                     |

## ***Rebuilding the Pistons***

### **Disassembly**

1. See Figure 10. Screw the plunger guide lifter (1) into the plunger (2).
2. Lightly tap the plunger guide lifter with a hammer to slip the plunger off the shaft. Discard the plunger.
3. Remove the piston return spring (3) by pulling it outward and turning it counterclockwise.
4. Remove these parts from the piston case (4):
  - spring retainer (5)
  - valve cylinder O-ring (6)
  - valve cylinder spring (7)
  - plunger stem (8)
  - valve cylinder (9)
  - O-ring (10)
  - retaining washer (11)
  - ball (12)
5. Inspect the parts for any damage or wear. If any parts are worn or damaged, replace the complete piston assembly.
6. Repeat steps 1 through 5 for the remaining pistons.

### **Rebuilding**

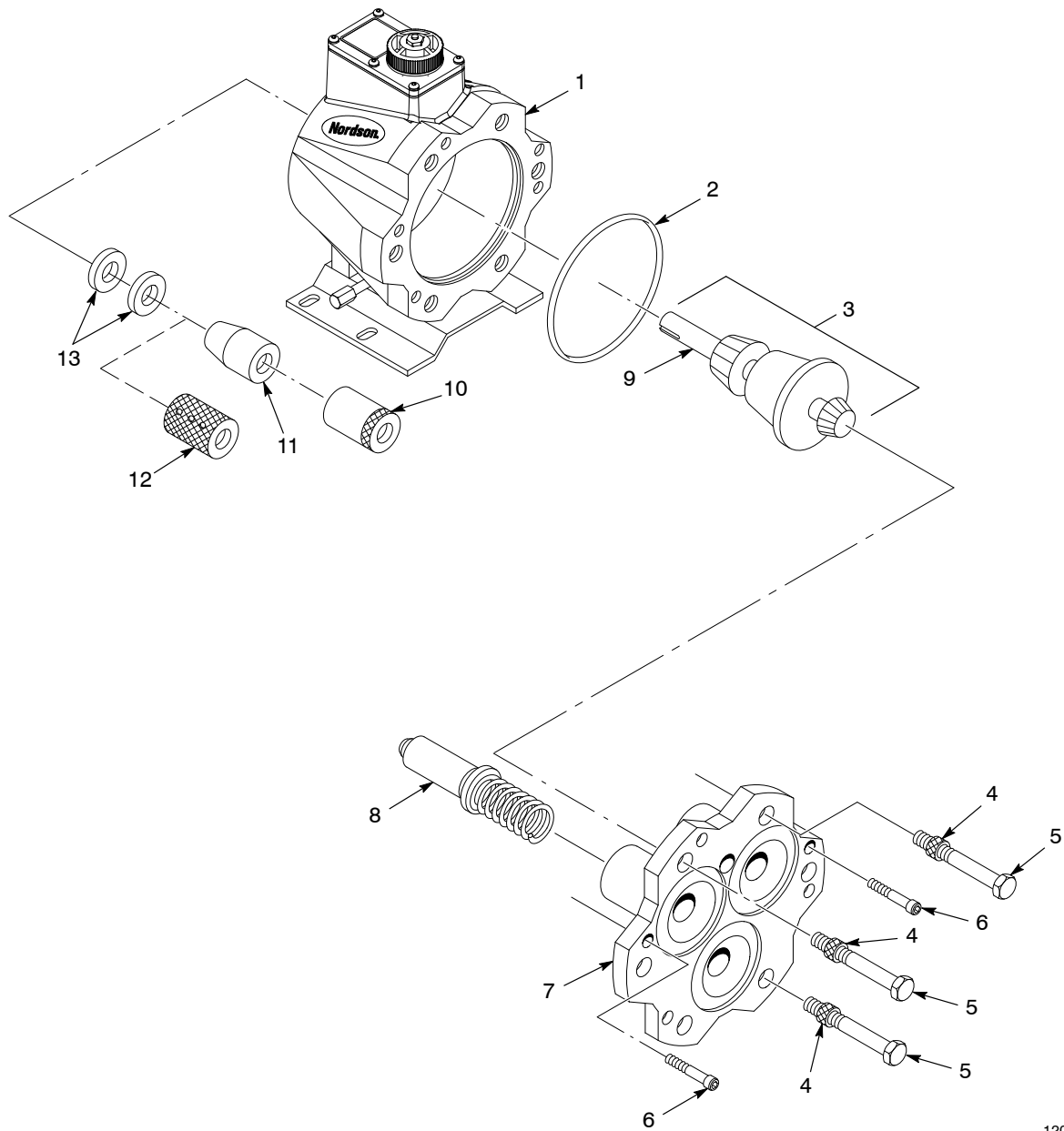
1. See Figure 10. Place the ball (12) into the piston case (4). Make sure the ball seats into the hole at the bottom of the case.
2. Insert the retaining washer (11) and O-ring (10) into the piston case.
3. Insert the plunger stem (8) into the valve cylinder (9).
4. Slide the valve cylinder spring (7) over the plunger stem.
5. Insert the valve cylinder O-ring (6) into the spring retainer (5).
6. Slide the valve cylinder assembly into the spring retainer. Slide this assembly into the piston case (4).
7. Insert the piston return spring (3), wide end first, into the piston case. Turn the spring until it bottoms out.
8. Repeat steps 1 through 7 for the remaining pistons.





## ***Pump Housing Assembly***

1. See Figure 11. Insert the pistons (8) into the cylinder casting (7). Make sure the hole on the foot end of each piston is pointing toward the center of the cylinder casting.
2. Clean the pilot bearing race on the cylinder casting. Apply a thin film of EP-2 oil to its surface.
3. Apply O-ring lubricant to the O-ring (2). Install the O-ring on the inside surface of pump housing (1).
4. Clean the bearing race on the pump housing. Apply a thin film of EP-2 oil to its surface.
5. Carefully place the cam shaft assembly (3) into the pump housing. Nest the bearing into the bearing race.
6. Place the cylinder casting (7) on the pump housing. Make sure the cylinder casting and the pump housing bolt holes are aligned.
7. Install the draw bolts (5) and nuts (4) as illustrated. Tighten the draw bolt nuts evenly.
8. Use the shaft rotator tool (12) to rotate the shaft (9). If the shaft begins to bind, loosen the nuts and realign the shaft.
9. Install the cylinder casting retainer bolts (6).
10. Loosen the nuts (4) and remove the draw bolts (5).
11. Rotate the shaft (9) to check for proper alignment. Remove the shaft rotator tool.
12. Apply a thin film of O-ring lubricant to the seal protector tool (11). Slide the seals (13) on the tool, with the spring side of the seals toward the open end of the tool. Apply a heavy coat of O-ring lubricant between the seals and press them together on the tool.
13. Apply a coating of Loctite high-performance pipe sealant with PTFE or a comparable product to the outer surface of the seals (13) and to the surface of the pump housing where the seals will be installed.
14. Apply a thin film of grease to the shaft (9). Slide the seal protector tool (11) over the end of the shaft.
15. Slide the seal inserter tool (10) over the seal protector tool (11). Press seals (13) completely into place. Tap the inserter tool with a soft mallet to firmly seat the seals. Remove both tools from the shaft.



1200491A

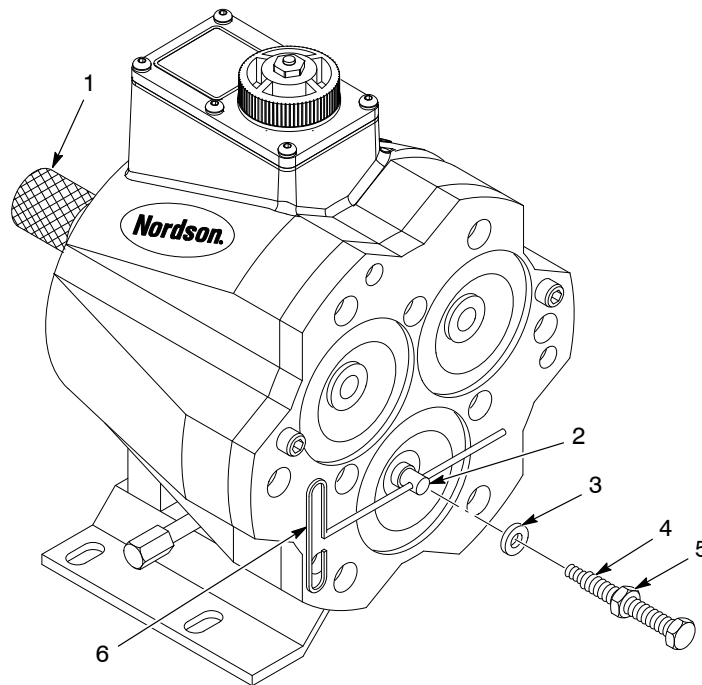
Figure 11 Pump Housing Assembly

- |                       |                                   |                         |
|-----------------------|-----------------------------------|-------------------------|
| 1. Pump housing       | 6. Cylinder casting retainer bolt | 10. Seal inserter tool  |
| 2. O-ring             | 7. Cylinder casting               | 11. Seal protector tool |
| 3. Cam shaft assembly | 8. Piston                         | 12. Shaft rotator tool  |
| 4. Nut                | 9. Shaft                          | 13. Seals               |
| 5. Draw bolt          |                                   |                         |

## Plunger Installation

**NOTE:** Do not install used plungers. Use new plungers.

1. See Figure 12. Install the shaft rotator tool (1) on the pump shaft. The keyway on the pump shaft corresponds to the high spot on the cam. Rotate the pump shaft until a plunger stem (2) is aligned with the keyway.
2. Place a plunger (3) on the screw end of the plunger guide tool (4). The flat side of the plunger should face the tool.
3. Screw the plunger guide tool into the plunger stem.
4. Pull the plunger guide tool until a drilled cross hole is exposed. Install the wrench (6) into the drilled cross hole.
5. Press fit the plunger to the plunger stem (2):
  - a. Tighten the plunger guide tool nut (5) down against the plunger (3) by hand.
  - b. Use a wrench to further tighten the plunger guide tool nut until the plunger is secure against the shoulder of the plunger stem.
6. Remove the plunger guide tool.
7. Remove the wrench from the plunger stem.
8. Repeat steps 1 through 7 for remaining plungers.



1200492A

Figure 12 Plunger Installation

- |                       |                           |
|-----------------------|---------------------------|
| 1. Shaft rotator tool | 4. Plunger guide tool     |
| 2. Plunger stem       | 5. Plunger guide tool nut |
| 3. Plunger            | 6. Wrench                 |

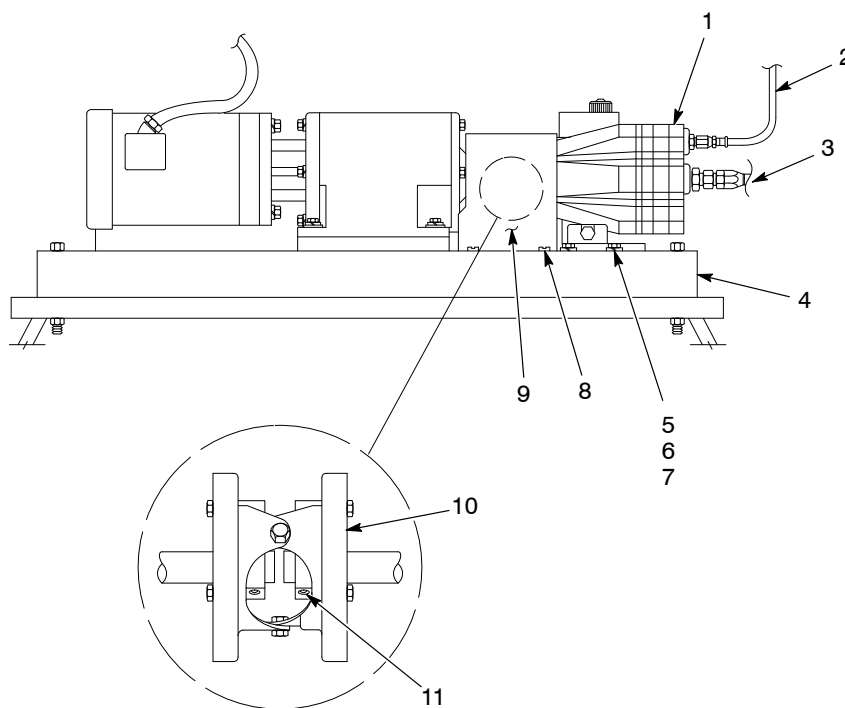
## Assemble the Fluid Section

Perform these procedures to assemble the fluid section before installing the pump:

Procedure	Page
<i>Diaphragm Cartridge Installation</i>	6
<i>Check Valve Installation</i>	8
<i>Assembling the Fluid Section</i>	9

## Pump Installation

1. See Figure 13. Use screws (5), lock washers (6), and flat washers (7) to install the pump (1) on the frame (4). Tighten the screws securely.
2. Tighten the set screws (11) on the coupling (10).
3. Use the screws (8) to install the shroud (9). Tighten the screws securely.
4. Connect the input and output hoses (2, 3).



1200482A

Figure 13 Pump Installation

- |                |                |
|----------------|----------------|
| 1. Pump        | 7. Flat washer |
| 2. Output hose | 8. Screw       |
| 3. Input hose  | 9. Shroud      |
| 4. Frame       | 10. Coupling   |
| 5. Screw       | 11. Set screw  |
| 6. Lock washer |                |

## Parts

To order parts, call the Nordson Customer Service Center or your local Nordson representative. Use this five-column parts list, and the accompanying illustration, to describe and locate parts correctly.

### *Using the Illustrated Parts List*

Numbers in the Item column correspond to numbers that identify parts in illustrations following each parts list. The code NS (not shown) indicates that a listed part is not illustrated. A dash (—) is used when the part number applies to all parts in the illustration.

The number in the Part column is the Nordson Corporation part number. A series of dashes in this column (-----) means the part cannot be ordered separately.

The Description column gives the part name, as well as its dimensions and other characteristics when appropriate. Indentions show the relationships between assemblies, subassemblies, and parts.

- If you order the assembly, items 1 and 2 will be included.
- If you order item 1, item 2 will be included.
- If you order item 2, you will receive item 2 only.

The number in the Quantity column is the quantity required per unit, assembly, or subassembly. The code AR (As Required) is used if the part number is a bulk item ordered in quantities or if the quantity per assembly depends on the product version or model.

Letters in the Note column refer to notes at the end of each parts list. Notes contain important information about usage and ordering. Special attention should be given to notes.

Item	Part	Description	Quantity	Note
—	0000000	Assembly	1	
1	000000	• Subassembly	2	A
2	000000	• • Part	1	

## EP-2 Si Three-Piston Pump

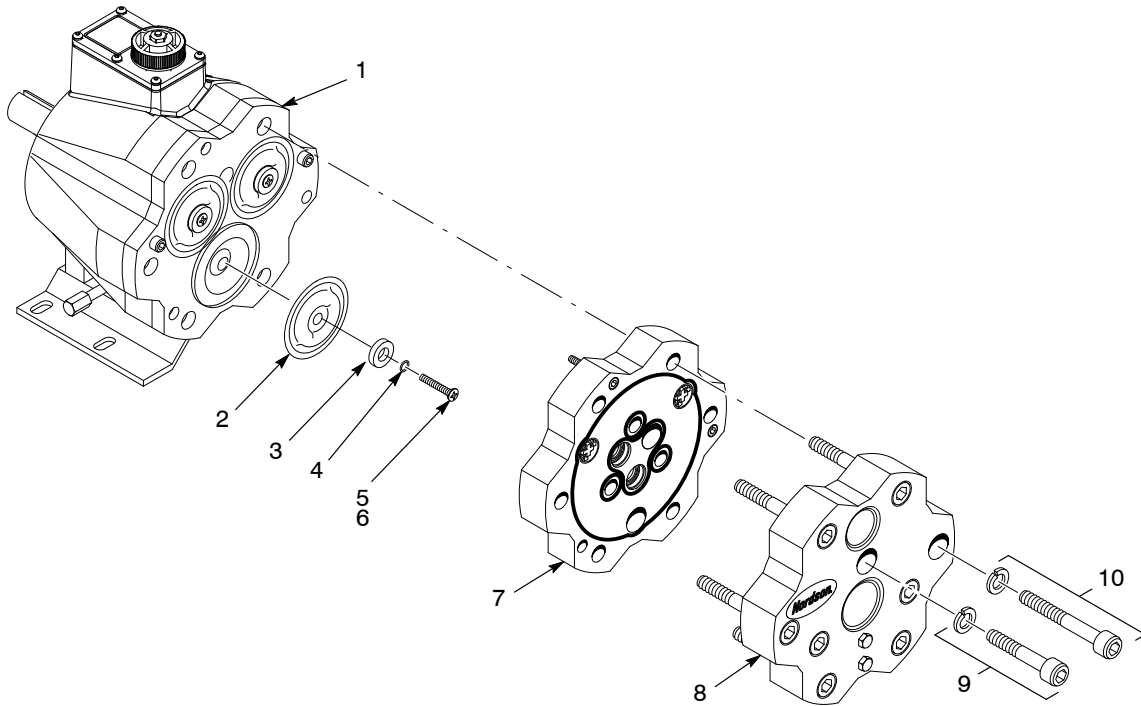
See Figure 14.

Item	Part	Description	Quantity	Note
—	1064660	PUMP, EP-2 Si, three piston, single diaphragm	1	
1	-----	• PUMP, Three Piston, 82.75 bar (1200 psi)	1	
2	-----	• DIAPHRAGM	3	A
3	1049264	• WASHER, follower, EP-2	3	
4	940080	• O-RING, 0.188 x 0.313 x 0.063 in.	3	A
5	-----	• SCREW, cross, flat head, #10-32 x $\frac{3}{8}$ -in., stainless steel	3	
6	900464	• ADHESIVE, threadlocking	AR	
7	162861	• PLATE, valve	1	
8	-----	• PLATE, end	1	
9	-----	• SCREW, socket head, $\frac{7}{16}$ -14 x 2.75 in., black	3	
10	-----	• SCREW, socket head, $\frac{7}{16}$ -14 x 3.00 in., black	6	
NS	1049265	• OIL, EP-2, 2 qt	AR	

NOTE A: These parts are included in the *Diaphragm Kit*. Refer to the kit list on page 20.

AR: As Required

NS: Not Shown



1200530A

Figure 14 EP-2 Three-Piston Pump

## Fluid Section Service Kits

### Diaphragm Kit

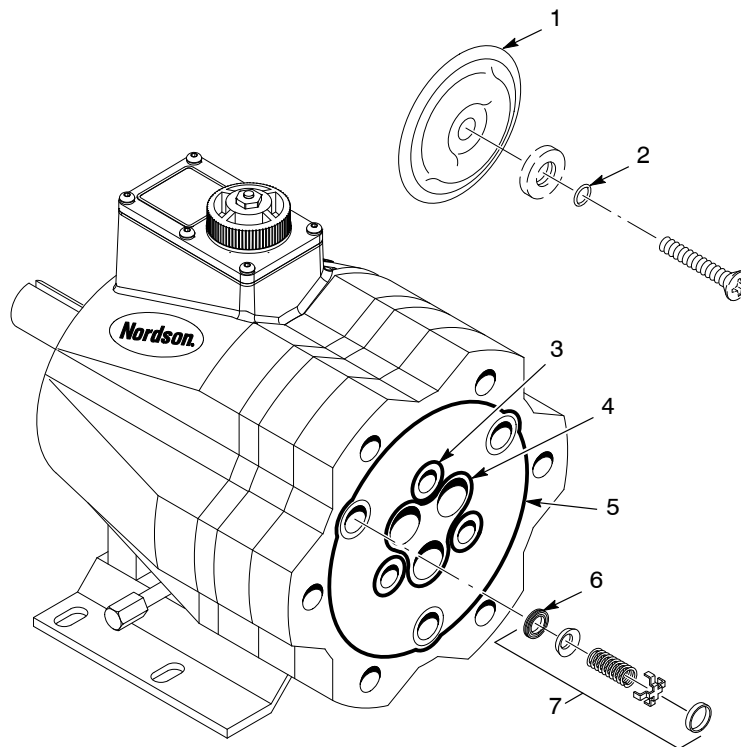
See Figure 15.

Item	Part	Description	Quantity	Note
—	1064661	KIT, single diaphragm, EP-2 Si	1	
1	-----	• DIAPHRAGM	3	
2	940080	• O-RING, hotpaint, 0.188 x 0.313 x 0.063 in.	3	
3	941160	• O-RING, hotpaint, 0.750 x 0.938 x 0.094 in.	3	
4	941500	• O-RING, hotpaint, 2.875 x 3.062 x 0.094 in.	1	
5	941610	• O-RING, hotpaint, 5.000 x 5.688 x 0.094 in.	1	
6	940214	• O-RING, hotpaint, 0.938 x 1.063 x 0.063 in.	6	

### Valve Repair Kit

See Figure 15. This kit contains all parts necessary to repair the check valves in the EP-2 three-piston pump.

Item	Part	Description	Quantity	Note
7	111730	SERVICE KIT, EP valve repair	1	



1200531A

Figure 15 Fluid Section Service Kits



## Hydraulic Section Service Kits

### Shaft Seal Kit

See Figure 16.

Item	Part	Description	Quantity	Note
—	141431	SERVICE KIT, EP shaft seal	1	
1	941182	• O-RING, Buna N, 0.875 x 1.063 x 0.094 in.	1	
2	-----	• SEAL, EP shaft	2	
3	941611	• O-RING, Buna N, 5.500 x 5.688 x 0.094 in.	1	
NS	900431	• ADHESIVE, pipe/thread/hydraulic sealant	1	
NS: Not Shown				

### Piston Assembly Kit

See Figure 16.

Item	Part	Description	Quantity	Note
—	1049269	SERVICE KIT, EP-2 piston assembly	1	
3	941611	• O-RING, Buna N, 5.500 x 5.688 x 0.094 in.	1	
4	-----	• PISTON ASSEMBLY, EP-2	1	

### Plunger Kit

See Figure 16.

Item	Part	Description	Quantity	Note
5	141432	PLUNGER, EP-2	1	

### Oil Cap

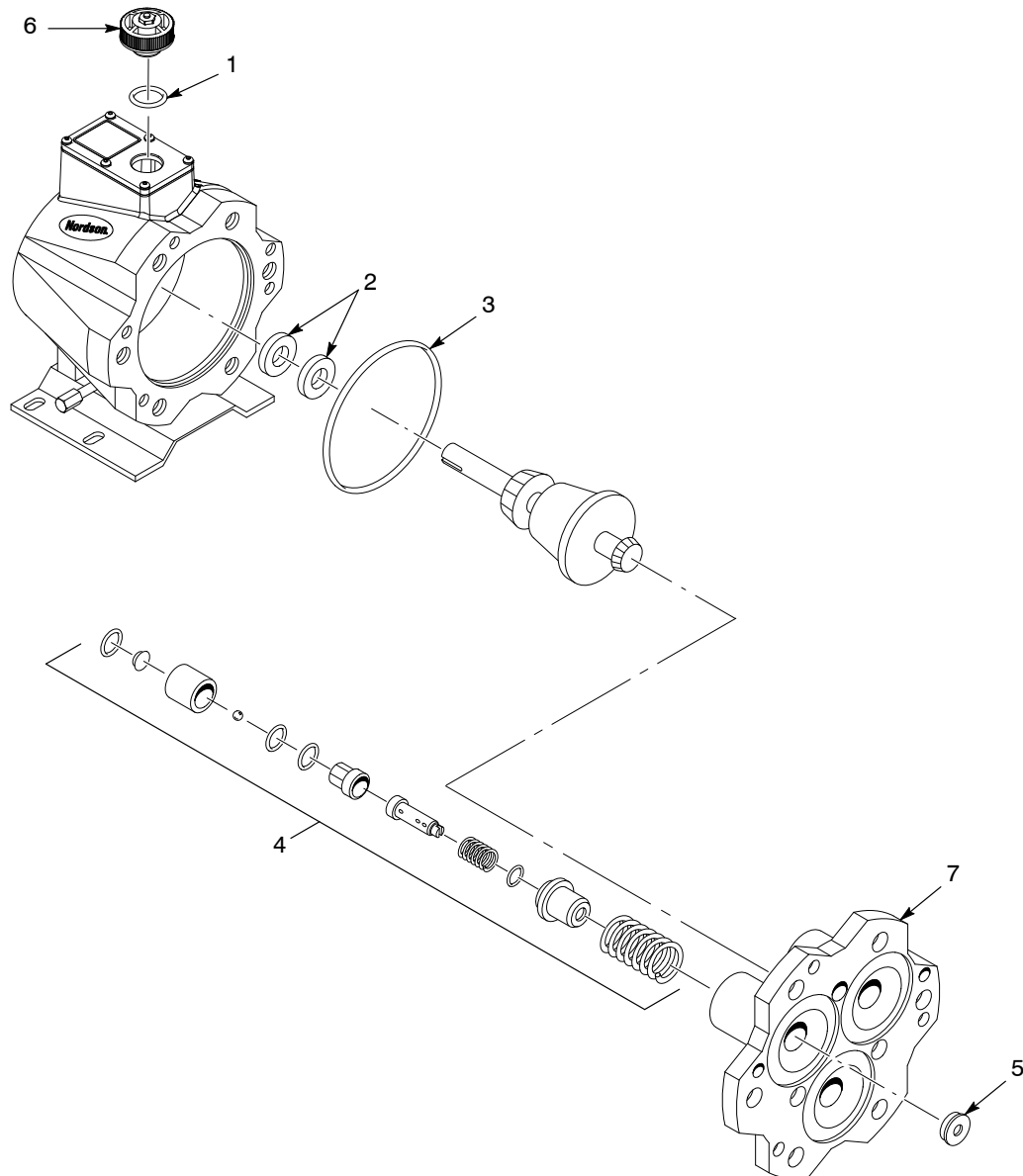
See Figure 16.

Item	Part	Description	Quantity	Note
6	141446	CAP, oil, EP	1	

## Upgrade Kit

See Figure 16.

Item	Part	Description	Quantity	Note
—	1606945	KIT, upgrade, EP-2 pump	1	
4	-----	• PISTON ASSEMBLY, EP-2	1	
NS	1049265	• OIL, EP-2, 2 qt	1	
7	-----	• HOUSING, EP-2 piston	1	



1200495A

Figure 16 Hydraulic Section Service Kits

***Optional Oil Change Suction Gun***

<b>Part</b>	<b>Description</b>	<b>Note</b>
179490	GUN, suction, oil change	

