

MEG[®] Quick-Electrical Connector



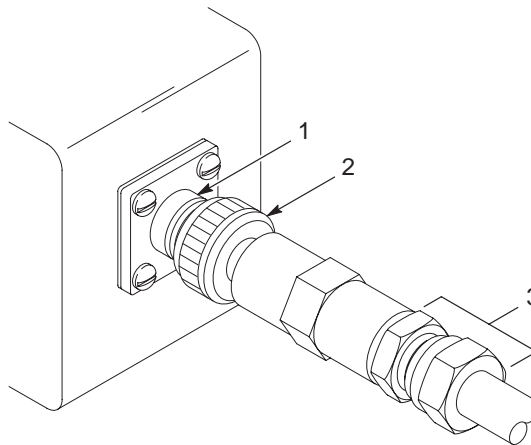
WARNING: Allow only qualified personnel to perform the following tasks. Follow the safety instructions in this document and all other related documentation.

Description

See Figure 1. This optional connector can be installed on all MEG spray guns to ease the servicing and removal of the spray guns.

The kit consists of:

- a socket (1) that is installed and wired to an existing junction box;
- a plug (2) that is connected to the MEG conduit assembly (3);
- attaching hardware.



1200162A

Figure 1 MEG Quick-Electrical Connector

- | | |
|-----------|-------------------------|
| 1. Socket | 3. MEG conduit assembly |
| 2. Plug | |

Installation



WARNING: Disconnect equipment from the line voltage.

Cut and Strip Existing Wire



WARNING: Sharp edge hazard. Keep hands and fingers away from the cutting edge of your knife. Failure to observe this warning may result in serious injury.

1. Make sure that power to the spray gun is off.
2. Lay the three wires extending from the existing MEG gun conduit assembly on a flat surface. Measure 17.8 cm (7 in.) from the conduit assembly and cut the wires.
3. Strip the outer cover off 1.9 cm (0.75 in.).

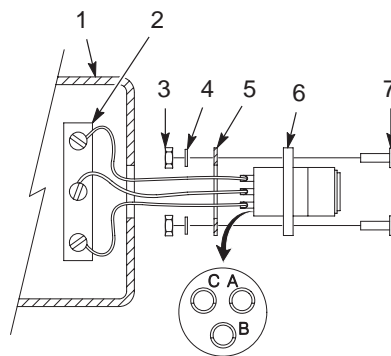
Wire the Socket to the Junction Box

NOTE: Use customer-supplied 16-gauge wire leads that are approximately 1-ft long. Be sure that you match the wire pattern when you wire the spray gun to the plug (A-A, B-B, C-C).

1. See Figure 2. Solder the wire leads to the socket (6).
2. Thread the wires through the gasket (5) and through the hole in the junction box.
3. Attach the socket to the junction box using the hex nuts (3), lock washers (4), and pan-head screws (7).

NOTE: Make sure that the green ground wire is attached to the terminal marked GND or \perp .

4. Connect the three wires to the terminal strip (2).



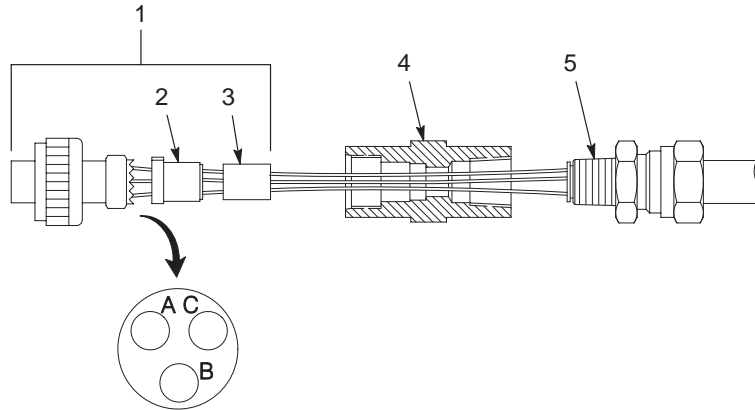
1200163A

Figure 2 Wire the Socket to the Junction Box

- | | |
|-------------------|-------------------|
| 1. Junction box | 5. Gasket |
| 2. Terminal strip | 6. Socket |
| 3. Hex nut | 7. Pan-head screw |
| 4. Lock washer | |

Wire the Spray Gun to the Plug

1. See Figure 3. The MEG gun conduit assembly (5) includes a conduit seal and a locknut. Remove and discard both of these items from the assembly.
2. Thread the conduit assembly wires through the adapter (4).

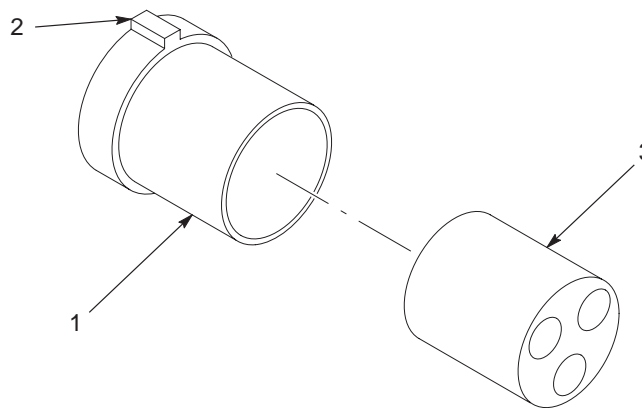


1200164A

Figure 3 Wire the Spray Gun to the Plug

- | | |
|-------------------|-----------------------------|
| 1. Plug | 4. Adapter |
| 2. Bushing | 5. MEG gun conduit assembly |
| 3. Bushing sleeve | |

3. See Figure 4. Remove the bushing (3) from the bushing sleeve (1).



1200165A

Figure 4 Bushing and Bushing Sleeve

- | | |
|-------------------|------------|
| 1. Bushing sleeve | 3. Bushing |
| 2. Tab | |

Wire the Spray Gun to the Plug (contd)

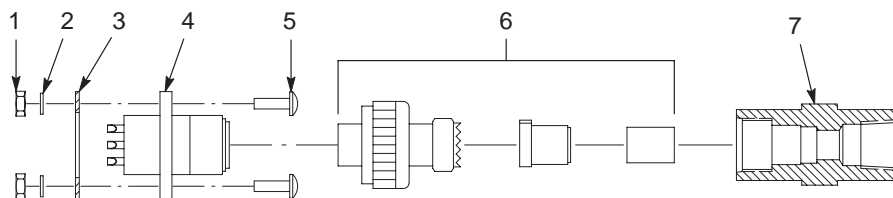
NOTE: The tab (2) indicates the placement of the bushing sleeve in the plug. Before you insert the bushing into the bushing sleeve be sure that you use the same wire pattern as you used on the socket (A-A, B-B, C-C).

4. Thread the wires through the three holes in the bushing.
5. Apply customer-supplied O-ring lubricant to the bushing. Insert the bushing into the bushing sleeve. The bushing fits very tightly in the bushing sleeve to form a fluid-tight seal.
6. See [Figure 3](#). Double-fold the wires and solder them onto the plug (1), in the same pattern as was done with the socket (A-A, B-B, C-C).
7. Pull the wire back to remove the slack.
8. Slide the bushing sleeve over the soldered terminals and into the plug.
9. Pull the extra wire back to remove the slack, double it up, and tuck it into the adapter and plug for a tight fit.
10. Screw the adapter onto the plug and then onto the MEG gun conduit assembly (5).

Parts

To order parts, call the Nordson Customer Service Center or your local Nordson representative. Use the parts list, and the accompanying illustration, to describe and locate parts correctly.

Item	Part	Description	Quantity	Note
—	1011319	CONNECTOR, electrical, MEG	1	
1	984104	• HEX NUT, machined, #4-40	4	
2	983101	• LOCK WASHER, e, internal, #4	4	
3	1014013	• GASKET, box receptacle connector	1	
4	808005	• CONNECTOR, box, MS3102A, socket	1	
5	981469	• SCREW, pan, #4-40 x 0.375 in.	4	
6	1040710	• CONNECTOR, plug, MS3106E, pin	1	
7	1011320	• ADAPTER, electrical connector, MEG	1	



1200166A

Figure 5 MEG Quick-Electrical Connector

Issued 4/03

Original copyright date 2001. MEG, Nordson, and the Nordson logo are registered trademarks of Nordson Corporation.