

Ink-Dot Adjustable Gun Bracket



WARNING: Allow only qualified personnel to perform the following tasks. Follow the safety instructions in this document and all other related documentation.

Description

See Figure 1. The Ink-Dot adjustable gun bracket mounts directly on the track-work and is adjustable for flexible gun positioning:

Item	Position Adjustment
A	moves the gun closer to the can
B	moves the gun vertically across the back of the can
C	rotates the gun on an axis to various angles

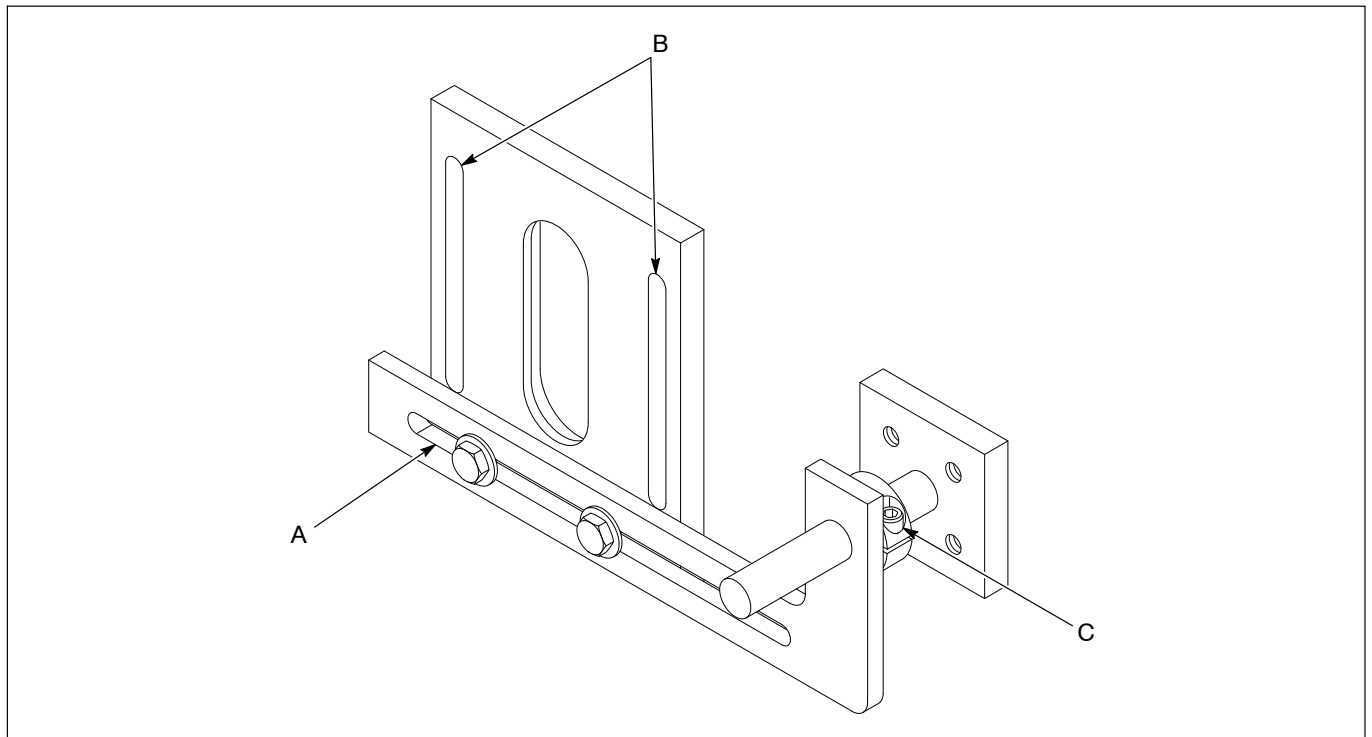


Figure 1 Ink-Dot Adjustable Gun Bracket Adjustments

Installation

Bracket and Proximity Sensor Mounting

1. See Figure 2. Unscrew one locking nut (2) from the end of the proximity sensor (1).
2. Insert the proximity sensor through the center slot of the mounting bracket (5). The center slot has a lip that holds the locking nut securely in place.
3. Install the locking nut on the opposite side of the mounting bracket as shown, position the sensor, then tighten the locking nut to hold the sensor in place.
4. Align the slots on the mounting bracket with the studs (6) on the rail and install the washers (4) and nuts (3). Tighten the nuts to hold the mounting bracket in place.
5. Secure the adjusting rod (7) to the mounting bracket (5) with the clamp screws (9) and washers (8).

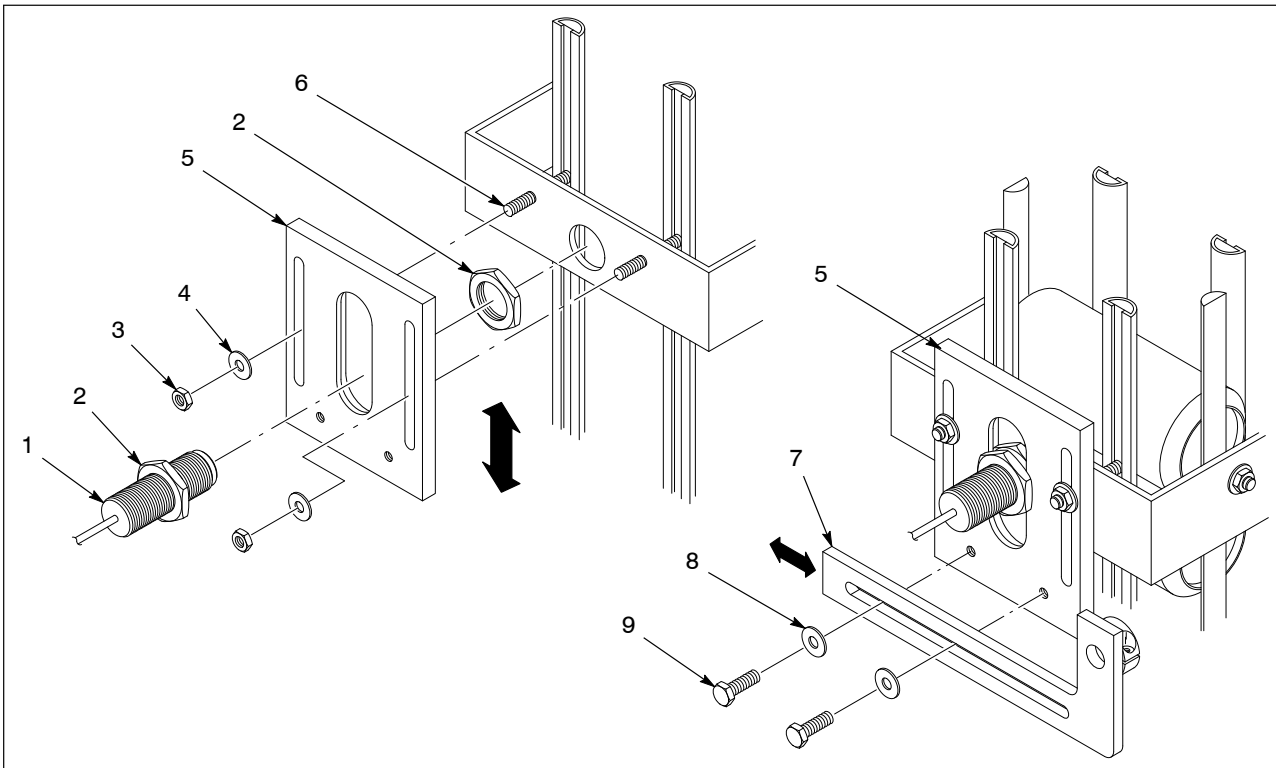


Figure 2 Bracket and Proximity Sensor Mounting

- | | | |
|-----------------------|---------------------|------------------|
| 1. Proximity sensor | 4. Washers | 7. Adjusting rod |
| 2. Sensor locking nut | 5. Mounting bracket | 8. Washers |
| 3. Nuts | 6. Studs | 9. Clamp screws |

Gun Mounting and Positioning

1. See Figure 3. Secure the gun (14) to the gun mount (13) with three screws (11) and washers (12).

NOTE: Mount the gun on a 15–30° angle from the can, approximately 4–6 mm (0.16–0.24 in.) above the rim of the can and 5 mm (0.19 in.) away.

2. Loosen the set screw (10), and rotate the gun mount until the gun is in the desired position in relation to the can. Tighten the set screw.
3. See Figure 2. Slide the adjusting rod (7) forward or back to adjust the distance from the gun nozzle to the can, then tighten the clamp screws (9).

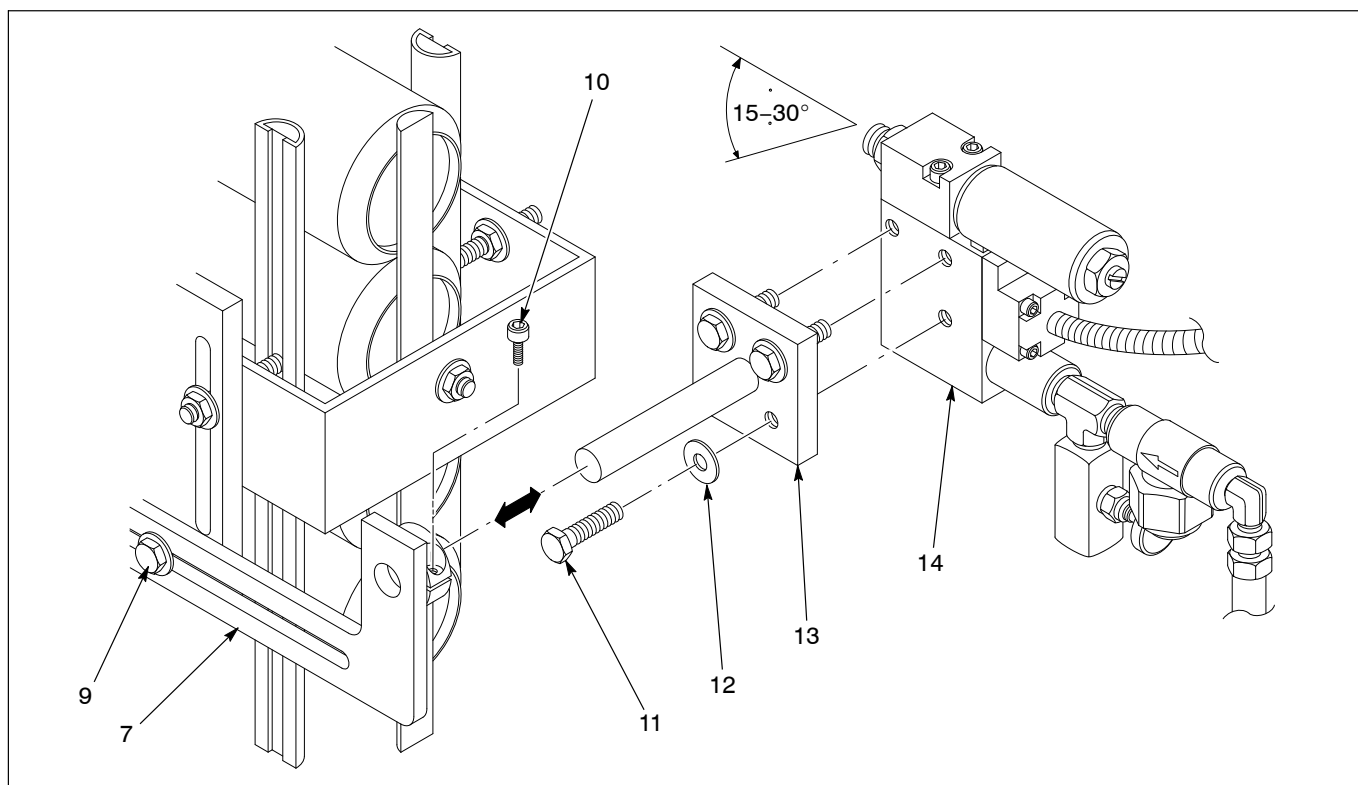


Figure 3 Gun Mounting

- | | | |
|---------------------|-------------|---------------|
| 7. Adjusting rod | 11. Screws | 13. Gun mount |
| 9. Clamp screws (2) | 12. Washers | 14. Gun |
| 10. Set screw | | |

Parts

To order parts, call the Nordson Industrial Coating Systems Customer Support Center at (800) 433-9319 or contact your local Nordson representative.

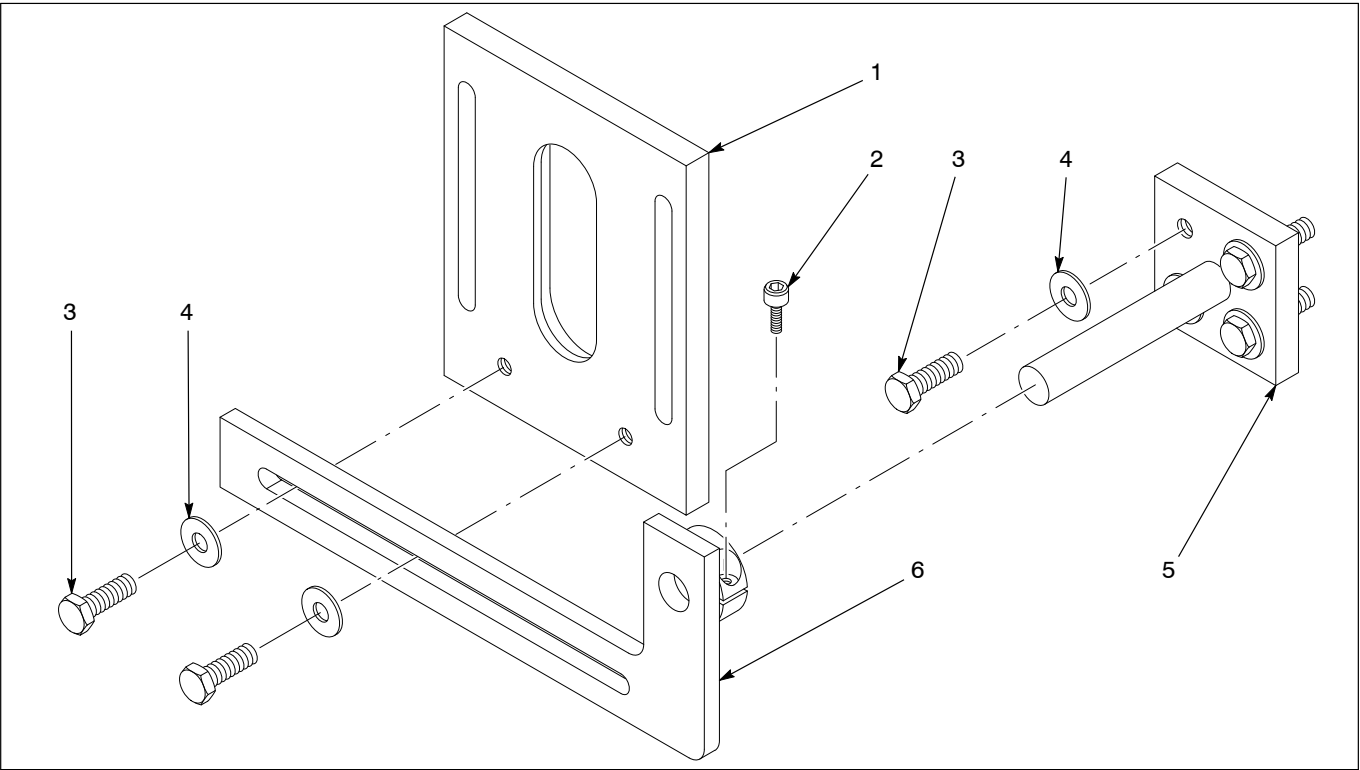


Figure 4 Parts

Item	Part	Description	Quantity	Note
–	1600620	Bracket, adjustable, Ink-Dot		
1	-----	• Mounting bracket		
2	-----	• Set screw		
3	-----	• Clamp screw, 1/4–20 x 0.75 in. long		
4	-----	• Washer		
5	-----	• Gun mount		
6	-----	• Adjusting rod		

Issued 5/12

Original copyright date 2001. Nordson and the Nordson logo are registered trademarks of Nordson Corporation.

All other trademarks are the property of their respective owners.