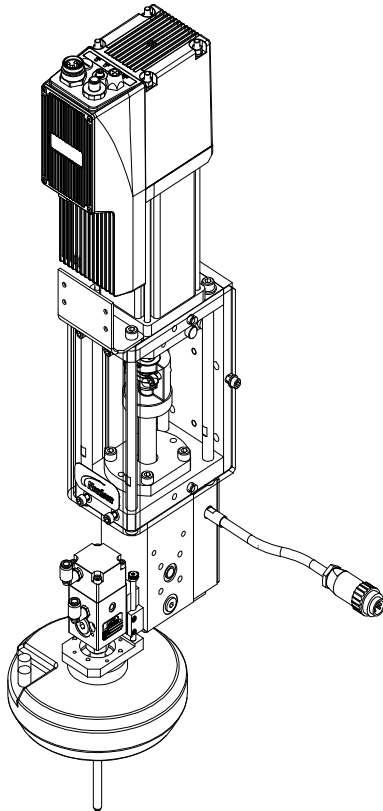


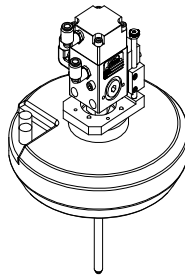
Auto-Flo™ (Gen3) Zero-Cavity Vision Mounting Kit Description

See Figure 1.

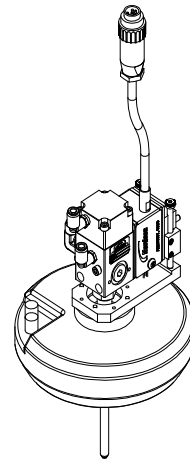
The Auto-Flo™ Zero-Cavity Vision Mounting Kit for the zero-cavity applicator allows a vision sensor to be attached to an applicator. The vision system is used in a variety of applications to dispense adhesives, sealants, and other materials. The sensor allows for real-time bead evaluation and can alert operators of misapplied beads.



**Manifold Mounting Kit
(Ambient, Electric Heat, or
Temperature Conditioning)**



**Standalone Mounting Kit
(Ambient or Temperature
Conditioning)**



**Standalone Mounting Kit
(Electric Heat)**

Figure 1 Auto-Flo™ (Gen 3) Zero-Cavity Mounting Kits

Installation



WARNING:

- Allow only qualified personnel to perform the following tasks. Follow the safety instructions in this document and all other related documentation.
- System or material pressurized. Relieve pressure. Failure to observe this warning may result in serious injury or death.

Tools Required

- Hex key set
- Socket wrench
- Socket Set

Manifold Mounting Kit (Ambient or Electric Heat)

See Figure 2.

1. Install the mount ring (7) to the mounting bracket (lower) (6) utilizing screws (M4 x 20 mm) (8).



CAUTION:

- Be sure to correctly align the mount ring (7) to the mounting bracket (lower) (6).
 - Hand tighten the screws (M4 x 20 mm) (8) until they are secure.
2. Press the dowel pin (applicator) (14) and O-ring (applicator) (13) into the mounting bracket (upper) (5).
 3. Loosely install the applicator (12) into the mounting bracket (lower) (6).
 4. Utilize screws (M5 x 70mm) (15) to install the mounting bracket (upper) (5) to the mounting bracket (lower) (6).



CAUTION: Tighten the screws (M5 x 70mm) (15) to 11 N•m (8 ft-lb).

5. Install screws (M3 x 10 mm) (4) to secure screws (M5 x 70mm) (15) to the mounting bracket (upper) (5).



CAUTION: Tighten the screws (M3 x 10 mm) (4) until they are secure.

6. Install the dowel pins (mounting bracket) (2) and the O-ring (0.239 ID x 0.07 w) (3) to the mounting flange of the meter (1).
7. Install screws (M5 x 65 mm) (11) to secure the applicator (12) and camera mount bracket (upper/lower) (5/6) as an assembly to the mounting flange of the meter (1).



CAUTION: Tighten the screws (11) until they are secure.

8. Install the screws (M4 x 50 mm) (10) securing the camera (9) to the mount ring (7) and camera mount bracket (upper/lower) (5/6) assembly.



CAUTION: Hand tighten the screws (M4 x 50 mm) (10) until they are secure.

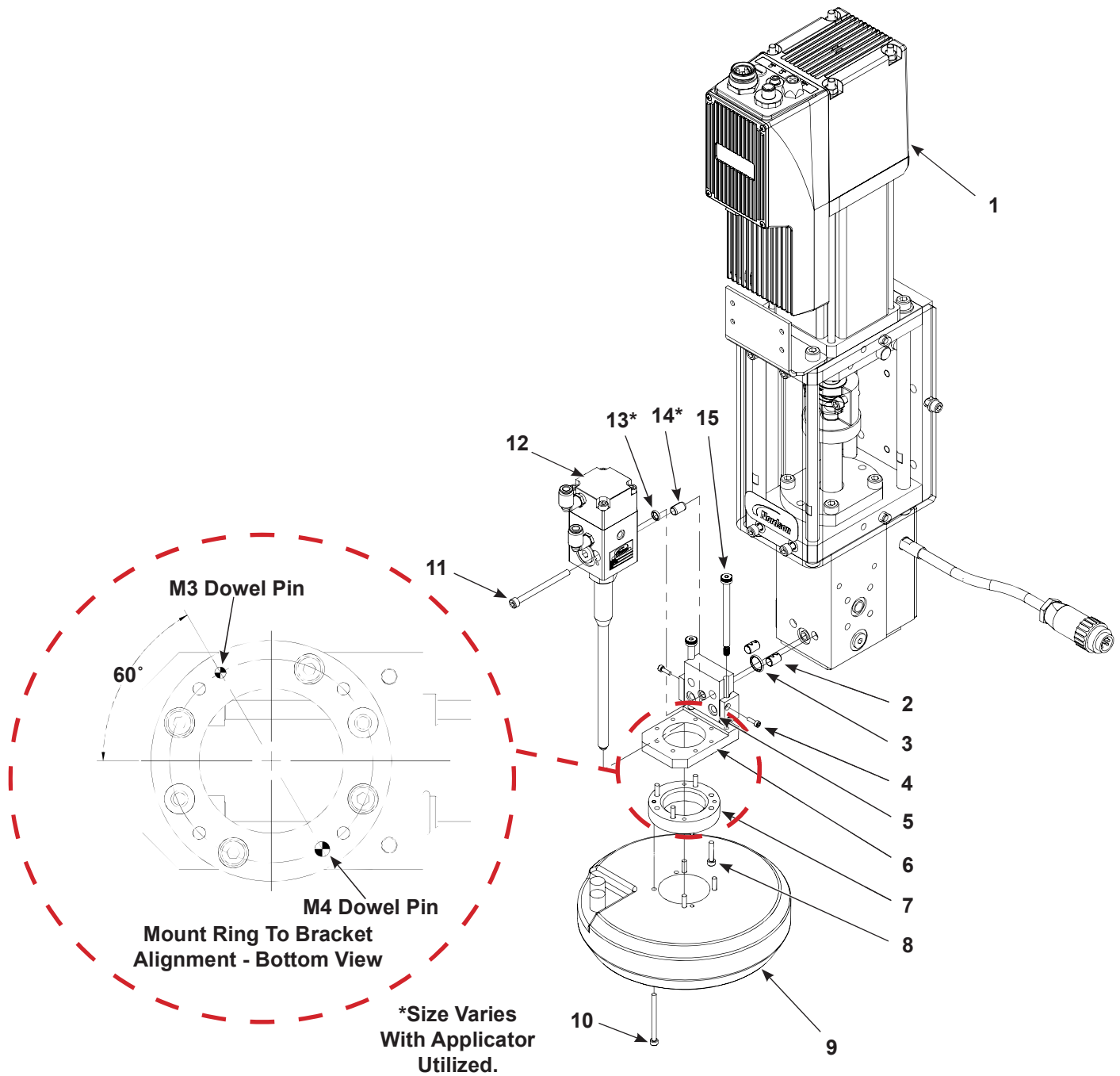


Figure 2 Manifold Mounting Kit (Ambient or Electric Heat)

- | | | |
|---------------------------------|-----------------------------|----------------------------|
| 1. Meter | 6. Mounting bracket (lower) | 11. Screw (M5 x 65 mm) |
| 2. Dowel pin (mounting bracket) | 7. Mount ring | 12. Applicator |
| 3. O-ring (0.239 ID x 0.07 w) | 8. Screw (M4 x 20 mm) | 13. O-ring (applicator) |
| 4. Screw (M3 x 10 mm) | 9. Camera | 14. Dowel pin (applicator) |
| 5. Mounting bracket (upper) | 10. Screw (M4 x 50 mm) | 15. Screw (M5 x 70 mm) |

Manifold Mounting Kit (Temperature Conditioning)

See Figure 3.

1. Install the mount ring (8) to the mounting bracket (lower) (7) utilizing screws (M4 x 20 mm) (9).



CAUTION:

- Be sure to correctly align the mount ring (8) to the mounting bracket (lower) (7).
- Hand tighten the screws (M4 x 20 mm) (9) until they are secure.

2. Press the dowel pin (applicator) (16), O-ring (applicator) (15), and the O-ring (applicator, temperature conditioning) (14) into the mounting bracket (upper) (6).
3. Loosely install the applicator (13) into the mounting bracket (lower) (7).
4. Utilize screws (M5 x 70 mm) (17) to install the mounting bracket (upper) (6) to the mounting bracket (lower) (7).



CAUTION: Tighten the screws (M5 x 70mm) (17) to 11 N•m (8 ft-lb).

5. Install the screws (M3 x 10 mm) (5) to secure screws (M5 x 70mm) (17) to the mounting bracket (upper) (6).



CAUTION: Tighten the screws (M3 x 10 mm) (5) until they are secure.

6. Install the dowel pins (mounting bracket) (2), O-ring (0.239 ID x 0.07 w) (3), and O-ring (0.301 ID x 0.07 w) (4) to the mounting flange of the meter (1).
7. Install screws (M5 x 120 mm) (12) to secure the applicator (13) and camera mount bracket (upper/lower) (6/7) as an assembly to the mounting flange of the meter (1).



CAUTION: Tighten the screws (12) until they are secure.

8. Install the screws (M4 x 50 mm) (11) securing the camera (10) to the mount ring (8) and camera mount bracket (upper/lower) (6/7) assembly.



CAUTION: Hand tighten the screws (11) until they are secure.

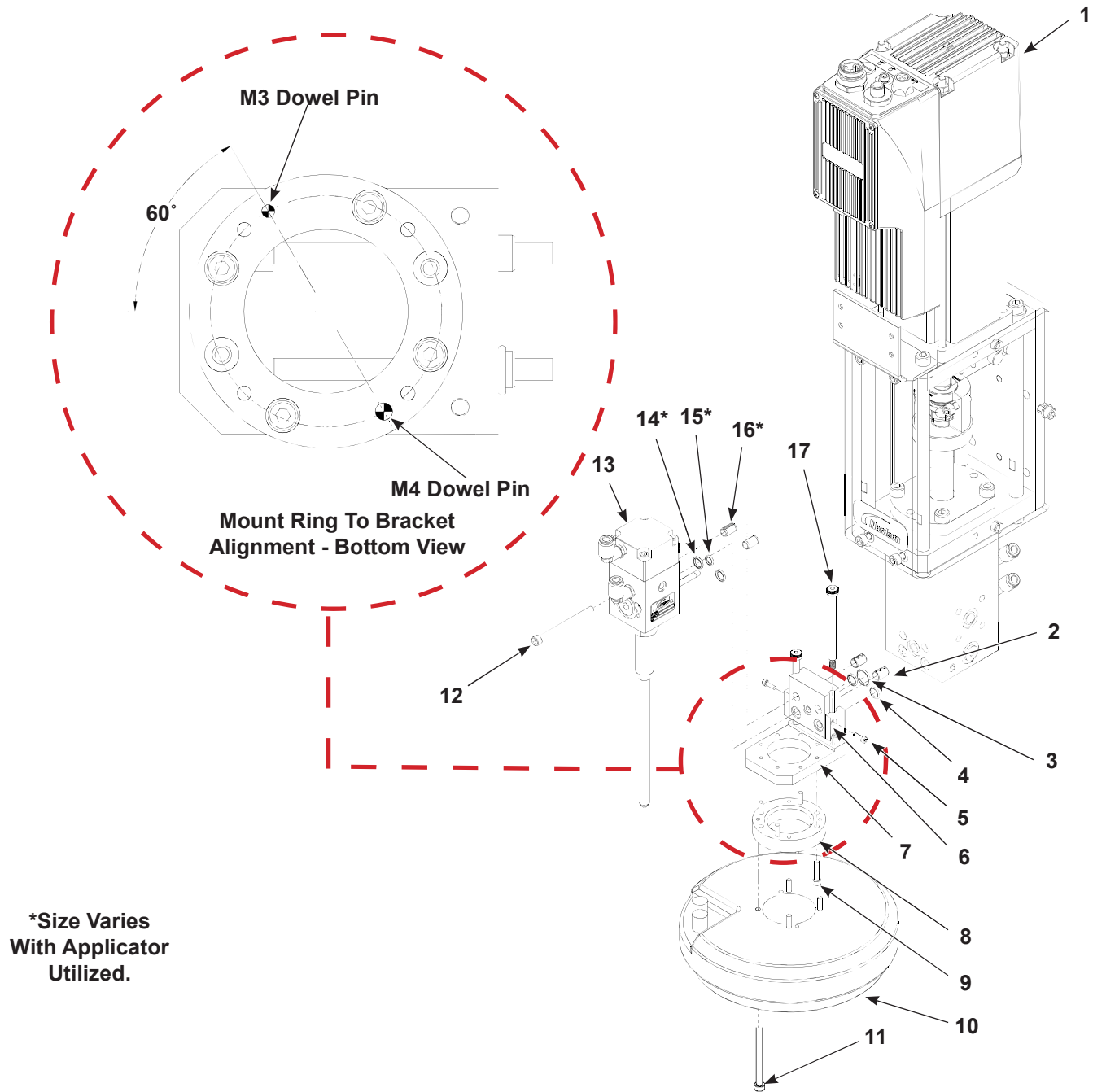


Figure 3 Manifold Mounting Kit (Temperature Conditioning)

- | | | |
|---------------------------------|-----------------------------|---|
| 1. Meter | 7. Mounting bracket (lower) | 13. Applicator |
| 2. Dowel pin (mounting bracket) | 8. Mount ring | 14. O-ring (applicator, temperature conditioning) |
| 3. O-ring (0.239 ID x 0.07 w) | 9. Screw (M4 x 20 mm) | 15. O-ring (applicator) |
| 4. O-ring (0.301 ID x 0.07 w) | 10. Camera | 16. Dowel pin (applicator) |
| 5. Screw (M3 x 10 mm) | 11. Screw (M4 x 50 mm) | 17. Screw (M5 x 70 mm) |
| 6. Mounting bracket (upper) | 12. Screw (M5 x 120 mm) | |

Standalone Mounting Kit (Ambient or Temperature Conditioning)

See Figure 4.

1. Install the mount ring (6) to the mounting bracket (lower) (5) utilizing screws (M4 x 20 mm) (7).



CAUTION:

- Be sure to correctly align the mount ring (6) to the mounting bracket (lower) (5).
- Hand tighten the screws (M4 x 20 mm) (7) until they are secure.

2. Install the dowel pins (mounting bracket) (2) to the mounting bracket (upper) (4).
3. Install the dowel pin (applicator) (12) to the mounting bracket (upper) (4).
4. Loosely install the applicator (11) into the mounting bracket (lower) (5).
5. Utilize screws (M5 x 70mm) (1) to install the mounting bracket (upper) (4) to the mounting bracket (lower) (5).



CAUTION: Tighten the screws (M5 x 70mm) (1) to 11 N•m (8 ft-lb).

6. Install the screws (M3 x 10 mm) (3) to secure screws (M5 x 70mm) (1) to the mounting bracket (upper) (4).



CAUTION: Tighten the screws (M3 x 10 mm) (3) until they are secure.

7. Position screws (M5 x 120 mm) (10) securing the applicator (11) and the camera mount bracket (upper/lower) (4/5) as an assembly to the tooling mounting flange.



CAUTION: Tighten the screws (M5 x 120 mm) (10) until they are secure.

8. Install the screws (M4 x 50 mm) (9) securing the camera (8) to the mount ring (6) and camera mount bracket (upper/lower) (4/5) assembly.



CAUTION: Hand tighten the screws (M4 x 50 mm) (9) until they are secure.

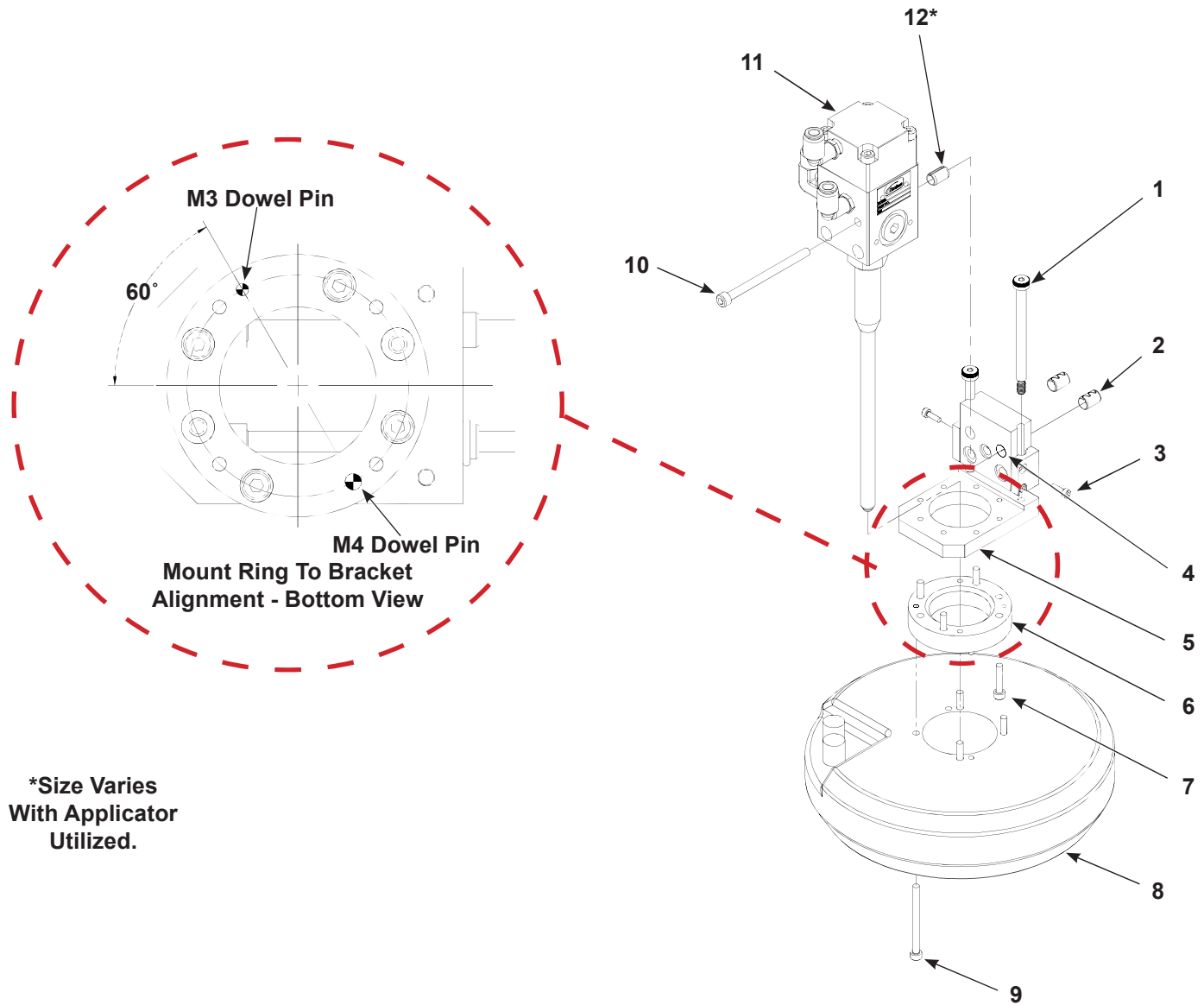


Figure 4 Standalone Mounting Kit (Ambient)

- | | | |
|---------------------------------|-----------------------------|----------------------------|
| 1. Screw (M5 x 70 mm) | 5. Mounting bracket (lower) | 9. Screw (M4 x 50 mm) |
| 2. Dowel pin (mounting bracket) | 6. Mount ring | 10. Screw (M5 x 120 mm) |
| 3. Screw (M3 x 10 mm) | 7. Screw (M4 x 20 mm) | 11. Applicator |
| 4. Mounting bracket (upper) | 8. Camera | 12. Dowel pin (applicator) |

Standalone Mounting Kit (Electric Heat)

See Figure 5.

1. Install the mount ring (7) to the mounting bracket (lower) (6) utilizing screws (M4 x 20 mm) (8).



CAUTION:

- Be sure to correctly align the mount ring (7) to the mounting bracket (lower) (6).
- Hand tighten the screws (M4 x 20 mm) (8) until they are secure.

2. Install the dowel pins (mounting bracket) (2) to the mounting bracket (upper) (4).
3. Loosely install the applicator (12) into the mounting bracket (lower) (6).
4. Loosely install screws (M5 x 120 mm) (11) through the applicator (12), heating unit (5), and the camera mount bracket (upper) (4).
5. Utilize screws (M5 x 70mm) (1) to install the mounting bracket (upper) (4) to the mounting bracket (lower) (6).



CAUTION: Tighten the screws (M5 x 70mm) (1) to 11 N•m (8 ft-lb).

6. Install the screws (M3 x 10 mm) (3) to secure screws (M5 x 70mm) (1) to the mounting bracket (upper) (4).



CAUTION: Tighten the screws (M3 x 10 mm) (3) until they are secure.

7. Position screws (M5 x 120 mm) (11) securing the applicator (12), heating unit (5), and the camera mount bracket (upper/lower) (4/6) as an assembly to the tooling mounting flange (not shown).



CAUTION: Tighten the screws (M5 x 120 mm) (11) until they are secure.

8. Install the screws (M4 x 50 mm) (10) securing the camera (9) to the mount ring (7) and camera mount bracket (upper/lower) (4/6) assembly.



CAUTION: Hand tighten the screws (M4 x 50 mm) (10) until they are secure.

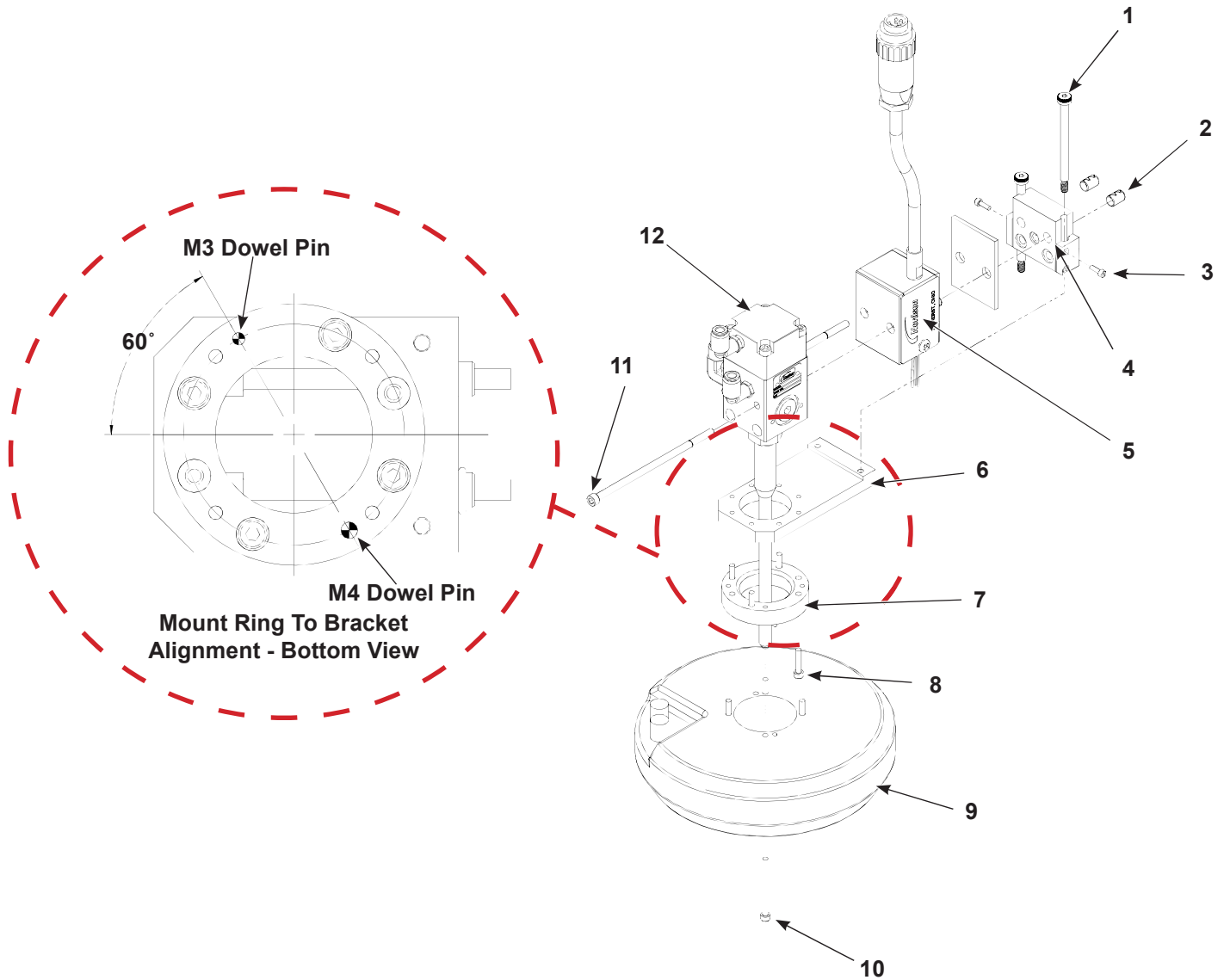


Figure 5 Standalone Mounting Kit (Electric Heat)

- | | | |
|---------------------------------|-----------------------------|-------------------------|
| 1. Screw (M5 x 70 mm) | 5. Heating unit | 9. Camera |
| 2. Dowel pin (mounting bracket) | 6. Mounting bracket (lower) | 10. Screw (M4 x 50 mm) |
| 3. Screw (M3 x 10 mm) | 7. Mount ring | 11. Screw (M5 x 120 mm) |
| 4. Mounting bracket (upper) | 8. Screw (M4 x 20 mm) | 12. Applicator |

Parts

To order parts, call the Nordson Industrial Coating Systems Customer Support Center at (800) 433-9319 or contact your local Nordson representative.

Manifold Mounting Kit (Ambient, Electric Heat, or Temperature Conditioning)

See Figure 6 and the following parts list.

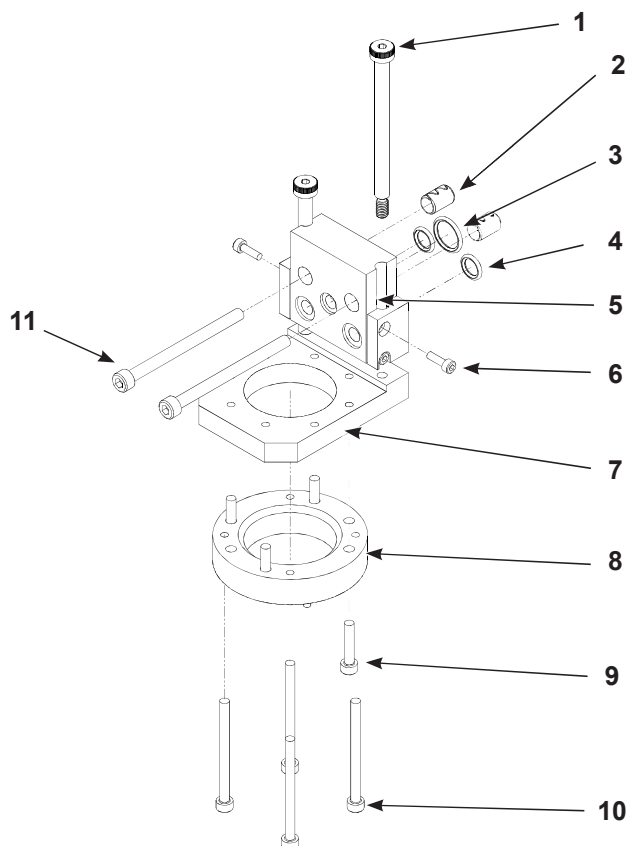


Figure 6 Manifold Mounting Kit (Ambient, Electric, or Temperature Conditioning)

Item	Description	Quantity
1627189 - KIT, manifold mount, generation 3, zero cavity, electric heat, 205 mm, 125 mm		—
1	• SHOULDER SCREW, 6 mm x 70 mm x M5	2
2	• DOWEL PIN, 8 mm OD x 12 mm long	2
3	• O RING, Viton®, 0.239 ID x .070 w	1
4	• O RING, Viton, 0.301 ID x .070 w	2
5	• MOUNTING BRACKET (UPPER)	1
6	• SCREW, socket head cap, M3 x 10 mm	4
7	• MOUNTING BRACKET (LOWER)	1
8	• MOUNT RING	1
9	• SCREW, socket, M4 x 20 mm, zinc	4
10	• SCREW, socket, M4 x 50 mm, zinc	4
11	• SCREW, socket, M5 x 65 mm, zinc	2

Standalone Mounting Kit

Ambient or Temperature Conditioning

See Figure 7 and the following parts list.

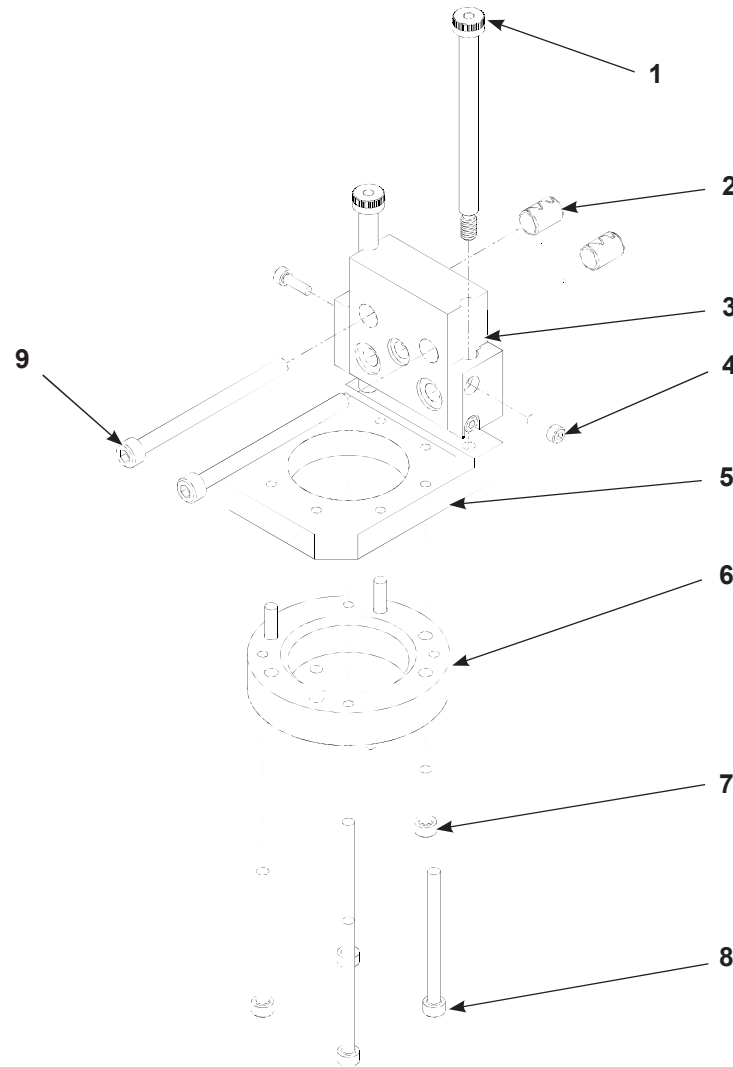


Figure 7 Standalone Mounting Kit (Ambient or Temperature Conditioning)

Item	Description	Quantity
1627331 - KIT,standalone mount,generation 3,zero cavity, 205 mm,125 mm		—
1	• SHOULDER SCREW, 6 mm x 70 mm x M5	2
2	• DOWEL PIN, 8 mm OD x 12 mm long	2
3	• MOUNTING BRACKET (UPPER)	1
4	• SCREW, socket head cap, M3 x 10 mm	4
5	• MOUNTING BRACKET (LOWER)	1
6	• MOUNT RING	1
7	• SCREW, socket, M4 x 20 mm, zinc	4
8	• SCREW, socket, M4 x 50 mm, zinc	4
9	• SCREW, socket, M5 x 75 mm, zinc	2

Electric Heat

See Figure 8 and the following parts list.

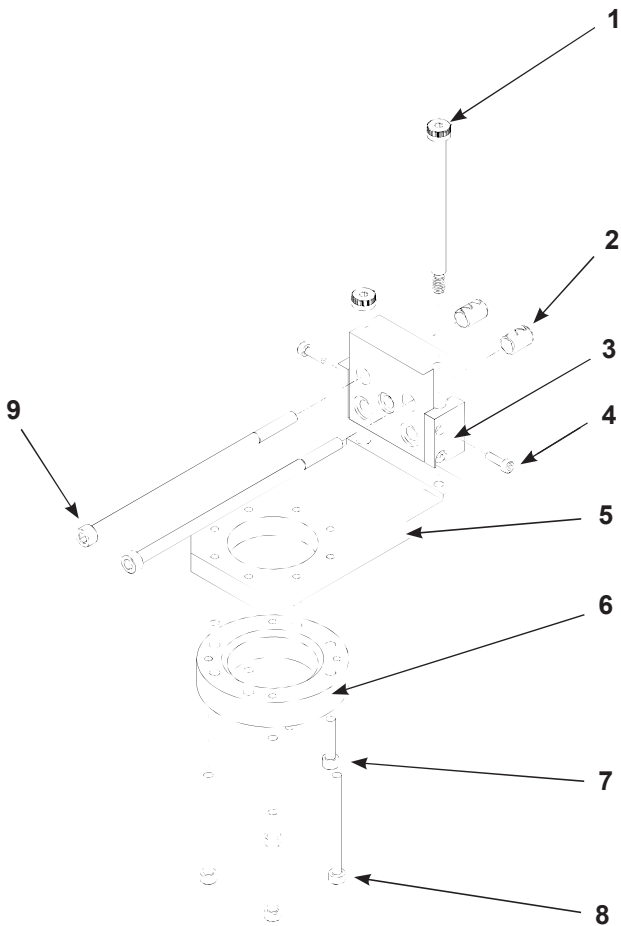


Figure 8 Standalone Mounting Kit (Electric Heat)

Item	Description	Quantity
1627190 - KIT,manifold mount,generation 3,zero cavity, 205 mm,electric heat,125 mm		—
1	• SHOULDER SCREW, 6 mm x 70 mm x M5	2
2	• DOWEL PIN, 8 mm OD x 12 mm long	2
3	• MOUNTING BRACKET (UPPER)	1
4	• SCREW, socket head cap, M3 x 10 mm	4
5	• MOUNTING BRACKET (LOWER)	1
6	• MOUNT RING	1
7	• SCREW, socket, M4 x 20 mm, zinc	4
8	• SCREW, socket, M4 x 50 mm, zinc	4
9	• SCREW, socket, M5 x 120 mm, zinc	2

Vision Compatible Zero-Cavity Dispensers

Item	Manifold Mounting Compatible
1089564	VALVE,Auto-Flo 2,1k,zero-cavity,aluminum,UHMWPE,4x15 mm
1093067	VALVE,Auto-Flo 2,1k,zero-cavity,extreme duty, aluminum,UHMWPE,4x15 mm
1104739	VALVE,Auto-Flo 2,1K,zero-cavity,aluminum,UHMWPE,2.2 x 89 mm,spring close
1615692	VALVE,Auto-Flo 2,1K,zero-cavity,aluminum,UHMWPE,2.3 x 205 mm
Item	Standalone Mounting Compatible
1089556	VALVE,Auto-Flo 2,1k,zero-cavity,aluminum,UHMWPE,0.6 x 15 mm
1089558	VALVE,Auto-Flo 2,1k,zero-cavity,aluminum,UHMWPE,4.0 x 15 mm
1093071	VALVE,Auto-Flo 2,1k,zero-cavity,extreme duty,aluminum,UHMWPE,4.0 x 15 mm
1098904	VALVE,Auto-Flo 2,1k,zero-cavity,aluminum,UHMWPE,2.2 x 89 mm
1101067	VALVE,Auto-Flo 2,1k,zero-cavity,aluminum,UHMWPE,2.2 x 89 mm,spring close
1101564	VALVE,Auto-Flo 2,1k,zero-cavity,aluminum,UHMWPE,2.3 x 205 mm
1605010	VALVE,Auto-Flo 2,1k,zero-cavity,aluminum,UHMWPE,2.2 x 89 mm

Issued 05/25

Original copyright date 2025. Nordson and the Nordson logo are registered trademarks of Nordson Corporation. Auto-Flo is a trademark of Nordson Corporation.

All other trademarks are the property of their respective owners.