

Rhino[®] SD/SD2 Wetted Component Refurbish Instructions

Proceed with the following instructions and refer to Figure 1 to replace and update the wetted components on SD/SD2 unloaders.

1. If installed, remove the material container from the unloader.
2. Move the elevator control valve into the *RAM UP* position until there is enough room between the bottom of the follower plate and the unloader base to fit a set of support blocks capable of supporting the follower plate. Place the elevator control valve in *NEUTRAL*.

NOTE: On systems with two-hand down controls, the two-hand down buttons must be pressed to raise or lower the follower plate. Release the two-hand down buttons to stop movement.

3. With the support blocks in place, place the elevator control valve in the *RAM DOWN* position until the follower plate makes contact with the support blocks. Place the elevator control valve in *NEUTRAL*.

NOTE: On systems with two-hand down controls, the two-hand down buttons must be pressed to raise or lower the follower plate. Release the two-hand down buttons to stop movement.

4. Remove the four coupling screws (7) securing the coupling halves (6) to the plunger rod (4) and floating joint coupling (5). Remove the coupling halves (6).
5. Remove the four nuts (1) securing the connecting rods (3) to the hydraulic section (2).
6. Place the elevator control valve in the *RAM UP* position and raise the ram until the hydraulic section (2) disconnects from the connecting rods (3).

NOTE: On systems with two-hand down controls, the two-hand down buttons must be pressed to raise or lower the follower plate. Release the two-hand down buttons to stop movement.

7. Insert blocks between the frame crossbar and the top of the ram cylinder. Place the elevator control valve in the *NEUTRAL* position.
8. Depressurize the system to relieve all air and material pressure.

NOTE: Before removing hoses, take note of the routing. New hoses will need to be routed along the same path.

9. Disconnect the material hose and remove the fitting.
10. Disconnect the hoses (18) from the depressurization valve (19) (if equipped).
11. Disconnect the hoses (9) from the blow-off valve regulator (11) on the control panel and the blow-off hose (8) on the follower plate.
12. Carefully remove the hydraulic section/follower plate assembly from the unloader.
13. Carefully place the new hydraulic section/follower plate assembly in position.

14. Remove the blocks between the frame crossbar and top of the ram cylinder. Place the elevator control valve in the *RAM DOWN* position.
15. Lower the ram until the connecting rods (3) are in place in the hydraulic section (2). Place the elevator control valve in *NEUTRAL*.
16. Secure the hydraulic section/follower plate assembly to the connecting rods (3) with four nuts (1). Tighten to 55 ft-lb (75 N•m).
17. Using the manual override (12), lower the floating joint coupling (5) until it makes contact with the plunger rod (4).
18. Install one of the coupling halves (6) on the floating joint coupling (5) and plunger rod (4) and use the manual override (12) to obtain a 0.76-2.54 mm (0.030-0.100 in.) gap.
19. Install the second coupling half (3). Make sure the gap between each side of the coupling halves (6) is equal and that the threads of the floating joint coupling (5) and plunger rod (4) are engaged in the coupling halves (6).
20. Apply Loctite® Threadlocker Blue 242® to the threads of the coupling screws (7) and tighten to 14-16 ft-lb (19-22 N•m).
21. Install the blow-off hose coupling/blow-off tube bracket (13) on the front right connecting rod and secure in place with two screws (15) and flat washers (14).
22. Connect the blow-off housing coupling tubing (11) to the blow-off valve (10) on the control panel. Route the blow-off hose tubing (11) along the same path as the removed blow-off tube and place the end of the blow-off hose (17) in the blow-off hose coupling/blow-off tube bracket (13).
23. Place the blow-off tube (16) in the blow-off hose coupling/blow-off tube bracket (13).
24. Re-install the material hose and fitting.
25. Connect the depressurization hoses (18) to the new depressurization valve (19) (if equipped).
26. Fill the solvent cup with compatible solvent cup fluid to within 0.75 in. of the top of solvent chamber.
27. Pressurize the system and put the unloader back into service as instructed in the unloader manual.

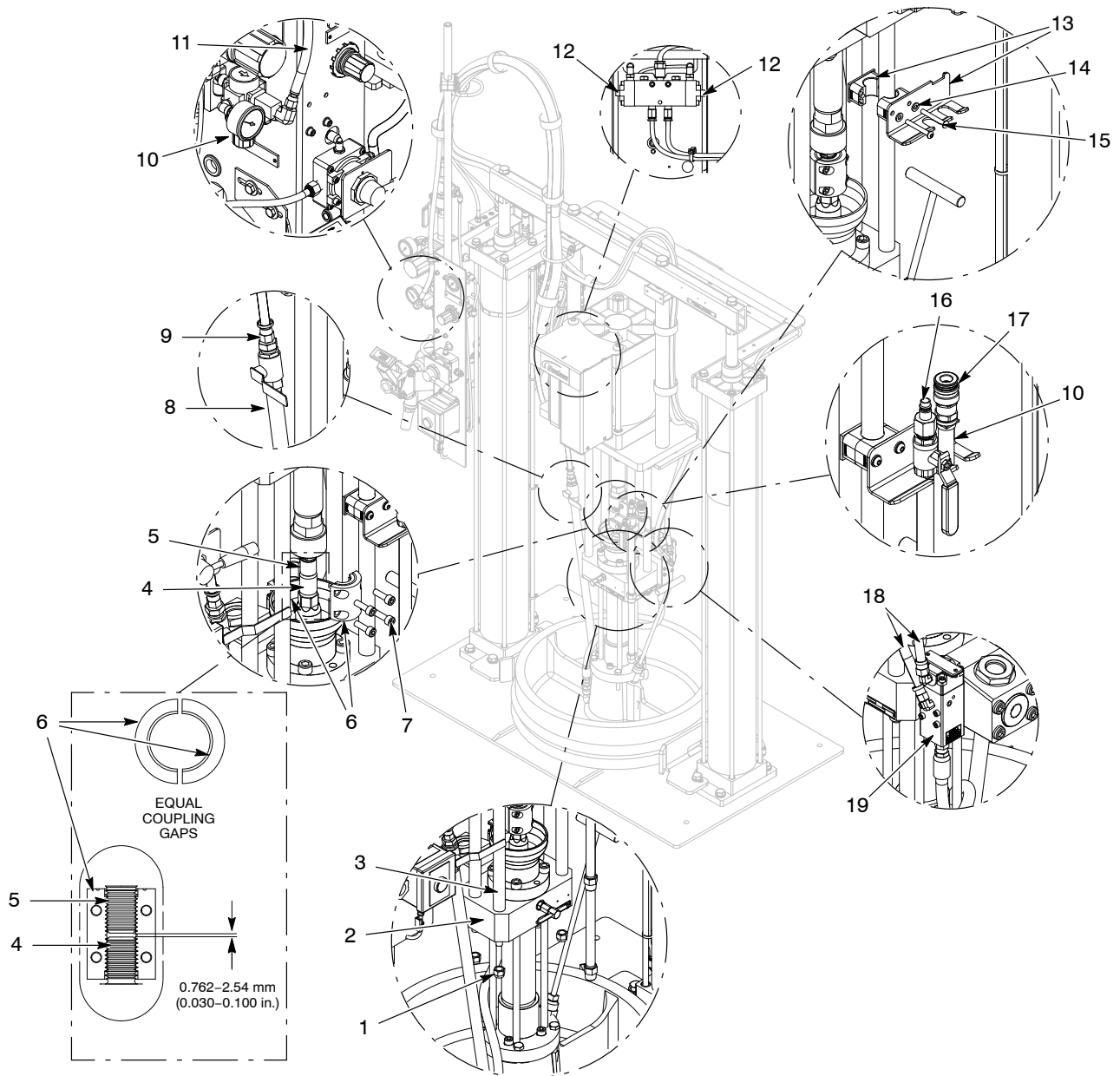


Figure 1 Rhino SD/SD2 Wetted Component Refurbish

Issued 12/19

Original copyright date 2019. Rhino, Nordson, and the Nordson logo are registered trademarks of Nordson Corporation.
All other trademarks are the property of their respective owners.