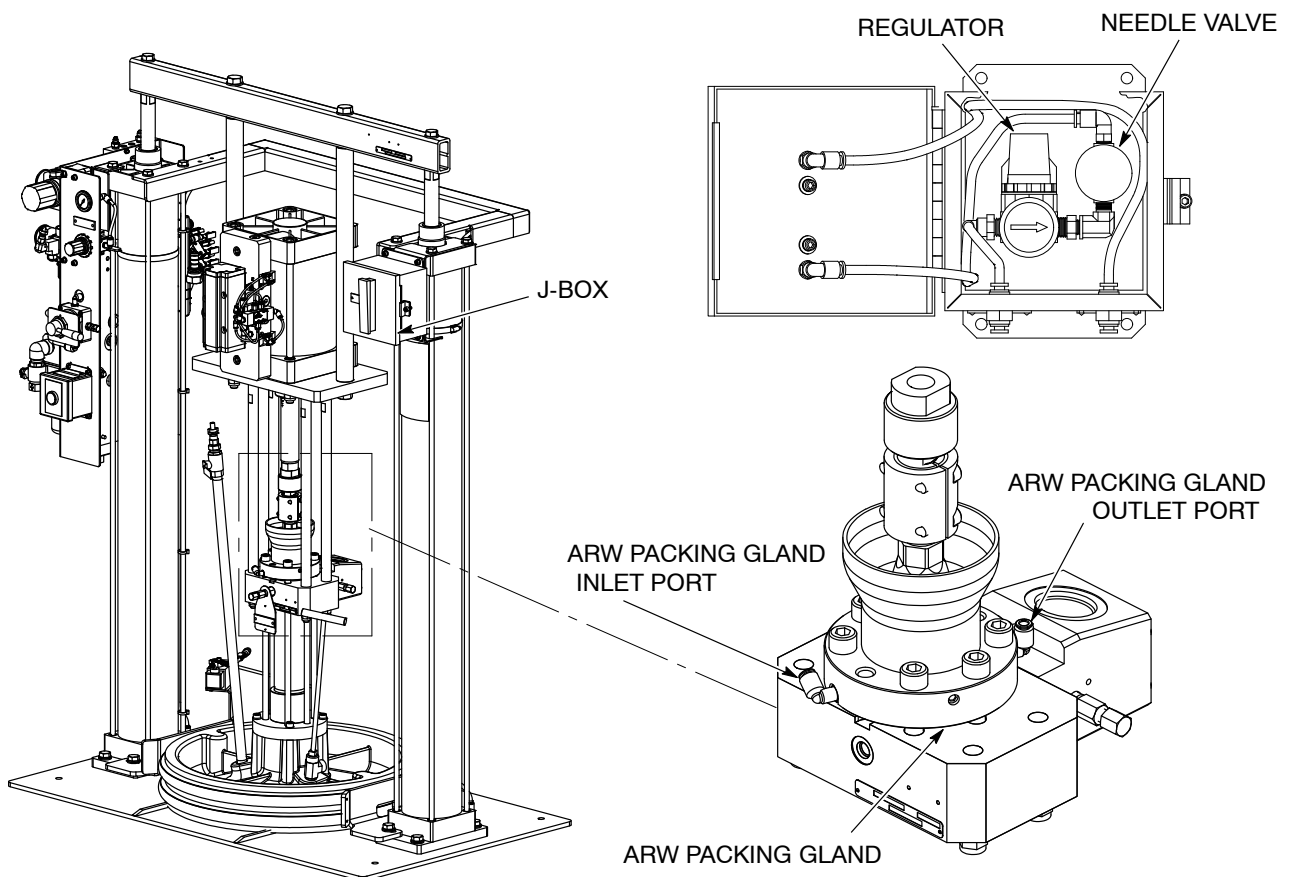


Rhino[®] SD2/XD2 ARW Air Circuit Module for 125-mm Frames

Description

See Figure 1. The Rhino[®] SD2/XD2 ARW (automatic removal of weepage) air circuit module for 125-mm frames consists of a J-box that supplies regulated air to the ARW packing gland. The ARW packing gland is designed for use with anaerobic compounds. Air flows into the inlet port and through an air passage behind the primary seal of the ARW packing gland. The air prevents curing of the material weepage that may occur past the primary seal. The material flows from the outlet port and into the customer-supplied ARW waste container.

NOTE: The flowmeter located on the front door of the J-box displays the flow rate.



10016955

Figure 1 ARW Air Circuit Module

Operation

See Figure 1.

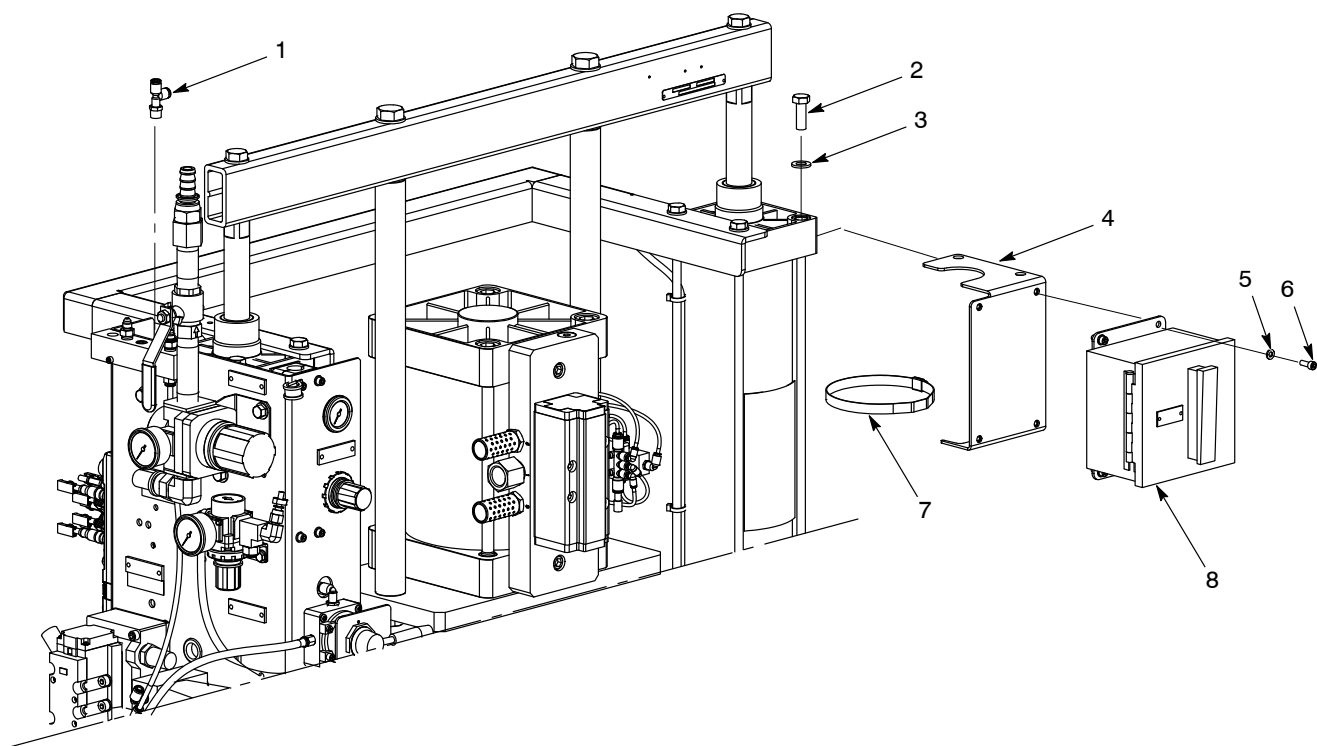
1. Set the J-box regulator air pressure to 40–60 psi.
2. Set the needle valve for an air flow of 25–45 lpm.

Parts

To order parts, call the Nordson Industrial Coating Systems Customer Support Center at (800) 433-9319 or contact your local Nordson representative.

ARW Air Circuit Module

See Figure 2 and refer to the following parts list.



10016955

Figure 2 ARW Air Circuit Module

NOTE: For clarity, some parts are not shown.

Item	Part	Description	Quantity	Note
—	1606854	MODULE, air circuit, ARW, 125-mm frame	1	
1	971267	• TEE, male run, ¼ tube x ¼ NPT	1	
2	-----	• SCREW, hex, cap, M12 x 35, zinc, Class 8.8, per ISO 4017	2	
3	-----	• WASHER, flat, M, reg, M12, zinc, per ISO 7089	2	
4	-----	• BRACKET, J-box, flowmeter, gauge	1	
5	-----	• WASHER, flat, M, oversized, 6, steel, zinc, per ISO 7089	4	
6	-----	• SCREW, socket, M6 x 16, Class 12.9, per ISO 4762	4	
7	-----	• CLAMP, hose, worm drive, 2.5–5.5, stainless steel	1	
8	1007144	• J-BOX ASSEMBLY, flowmeter gauge, S2K	1	A
NS	282286	• TUBING, ¼ OD, blue urethane	24 ft	
NS	324289	• STRAP, cable, 0.6–4.0, black	20	
NS	900481	• ADHESIVE, pipe/thread/hydraulic sealant	AR	
<p>NOTE A: Refer to the <i>J-Box Assembly</i> parts section to order parts.</p> <p>AR: As Required</p> <p>NS: Not Shown</p>				

J-Box Assembly

See Figure 3 and refer to the following parts list.

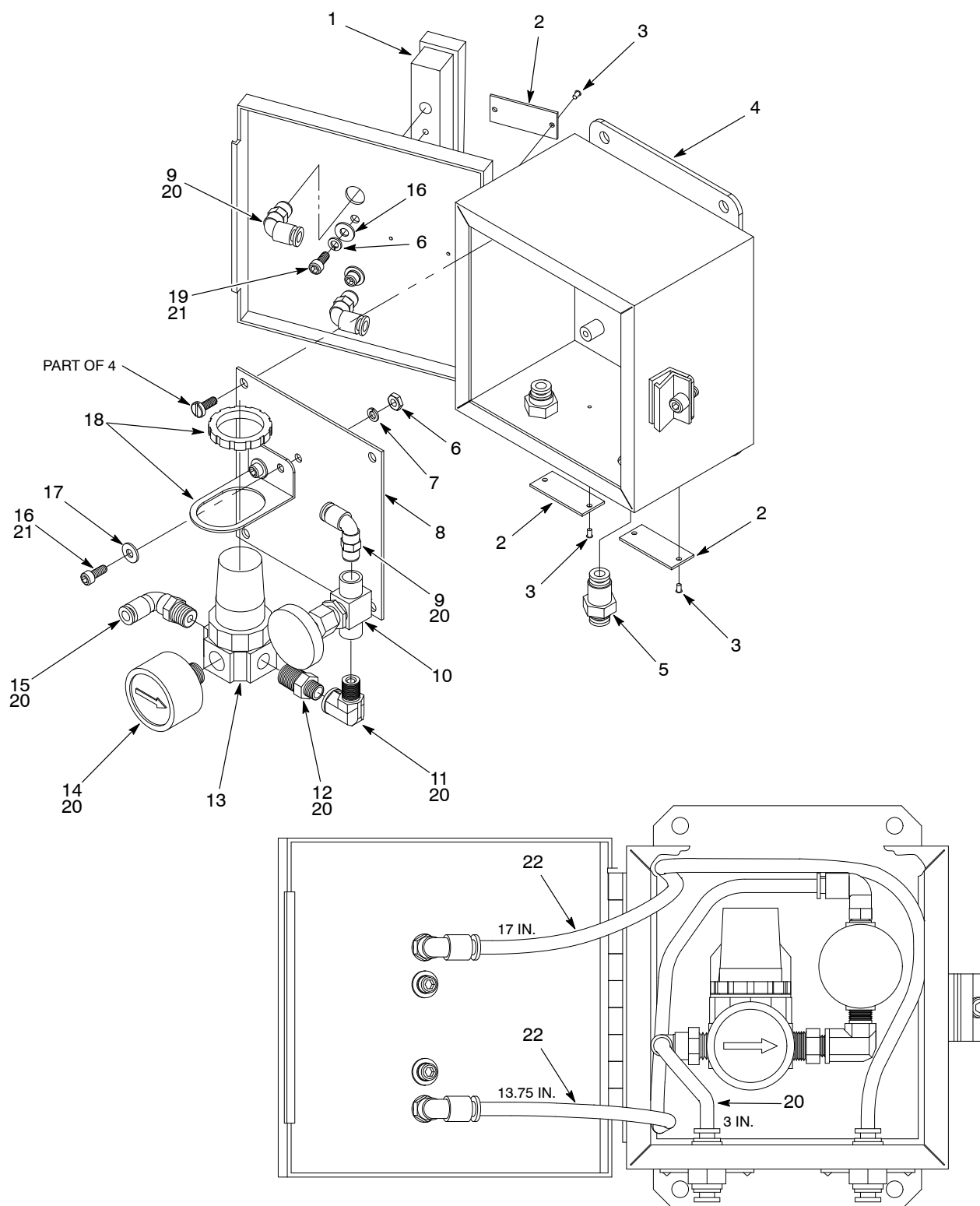


Figure 3 J-Box Assembly

Item	Part	Description	Quantity	Note
—	1007144	J-BOX ASSEMBLY, flowmeter gauge	1	
1	1007141	• FLOWMETER, low flow, 5–50 lpm air	1	
2	-----	• TAG SET, supply and ARW port	1	
3	981905	• SCREW, drive, 2 x 0.187, zinc	6	
4	-----	• BOX, junction, 6 x 6 x 4	1	
5	973986	• UNION, bulkhead, female, ¼ tube, push in	2	
6	984120	• NUT, hex, #10–32, steel, zinc	2	
7	983079	• WASHER, lock, #10, steel	4	
8	-----	• PANEL, Hoffman, 4.88 x 4.88	1	
9	972119	• ELBOW, male, ¼ tube x ½ NPT	3	
10	-----	• VALVE, needle	1	
11	973126	• ELBOW, pipe, hydraulic, 90, ½, steel, zinc	1	
12	973564	• NIPPLE, hex, ¼ x ½ x 1.188, steel, zinc	1	
13	126767	• REGULATOR, air, 0–60, ¼ NPT	1	
14	901237	• GAUGE, air, 0–100 psi 0–7 kg/cm 21	1	
15	971266	• ELBOW, male, 0.25 tube x 0.25 NPT	1	
16	-----	• SCREW, socket, 10–32 x 0.5	2	
17	345864	• WASHER, flat, e, #10, steel, zinc	4	
18	324522	• BRACKET, filter regulator	1	
19	-----	• SCREW, socket, 10–32 x 0.375	2	
20	900481	• ADHESIVE, sealant	AR	
21	900464	• ADHESIVE, Loctite® Threadlocker Blue 242®, removable, 50 ml	AR	
22	282286	• TUBING, ¼ OD, blue urethane	2.8 ft	
AR: As Required				

Issued 4/18

Original copyright date 2018. Rhino, Nordson, and the Nordson logo are registered trademarks of Nordson Corporation.

All other trademarks are the property of their respective owners.