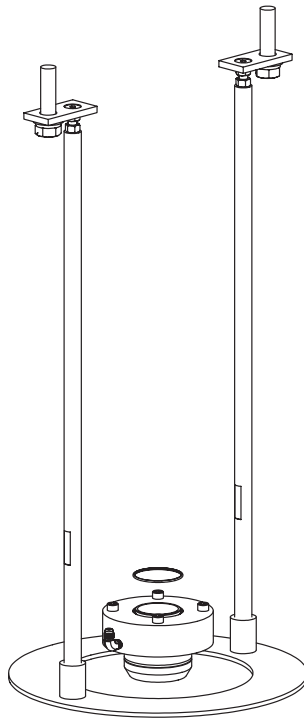


# Rhino® SD2/XD2 Mini-Tote Conversion Kit

## Description

See Figure 1.

The Rhino SD2/XD2 mini-tote conversion kit is used when the material container includes a follower as part of the container structure. The mini-tote conversion kit connects to the hydraulic section to interface with the follower in the container to dispense material.



10013876/10017215

Figure 1 Mini-Tote Conversion Kit

## Installation

See Figure 2.

1. Apply Mobil SHC™ 100 to the existing hydraulic section O-ring (11). Seat the O-ring on the adapter (12).
2. Attach the adapter (12) to the hydraulic section using the socket head screws (9) and lock washers (10). Torque to 35 ft-lb (48 Nm).
3. Ensure the connecting rod (3) is fully engaged into the push ring (14).
4. Install the flat head screw (5) through the connecting rod plate (6). Install the upper nut (7) and torque to 25 ft-lb (34 Nm).
5. Apply Loctite Threadlocker Red 271™ to the threads of the flat head screw (5). Install the lower nut (8) onto the flat head screw. Ensure there is a ¼-in. gap between the upper nut (7) and lower nut.
6. Apply Loctite Threadlocker Red 271 to the threads of the flat head screw (5). Install the connecting rod (3) onto the flat head screw. While maintaining the ¼-in. gap between the upper nut (7) and lower nut (8), torque the lower nut against the connecting rod to 75 ft-lb (102 Nm).
7. With the push ring (14), connecting rod (3), connecting rod plate (6), and flat head screw (5) assembled together, and the adapter (12) attached, lower the hydraulic section onto a block to support the weight of the hydraulic section. Remove one existing hydraulic section bolt (2) and two existing hydraulic section washers (1) holding the hydraulic section to the vertical rods (18) and position the connecting rod plate in place. Add Loctite Threadlocker Blue 242 to the existing bolt and replace the bolt loosely. Repeat for the other existing bolt and washers. Ensure both connecting rod plates are parallel with the front of the unloader. Torque both existing bolts to 200 ft-lb (271 Nm).
8. Remove the pressure relief valve (20). Apply pipe adhesive to the male threads of the ¼ pipe plug (21) and insert it into the pressure relief valve port.
9. Remove the pressure gauge (16) from the control module, then remove the Max Pressure tag (17) from the control module. Reinstall the pressure gauge (16).
10. Apply pipe adhesive to the male threads of the elbow (4) and into the adapter (12). Hand tighten the elbow until it is oriented upward, then connect the depressurization hose to the elbow.
11. Apply pipe adhesive to the male threads of the ¾ pipe plug (15) and insert it into the port on the unloader as shown in the detail view.
12. Apply Mobil SHC 100 to the O-ring (13). Add the O-ring to the adapter (12).
13. Set the empty limit sensor block (19) to a distance of 2.75 in. from the top of the cylinder base.

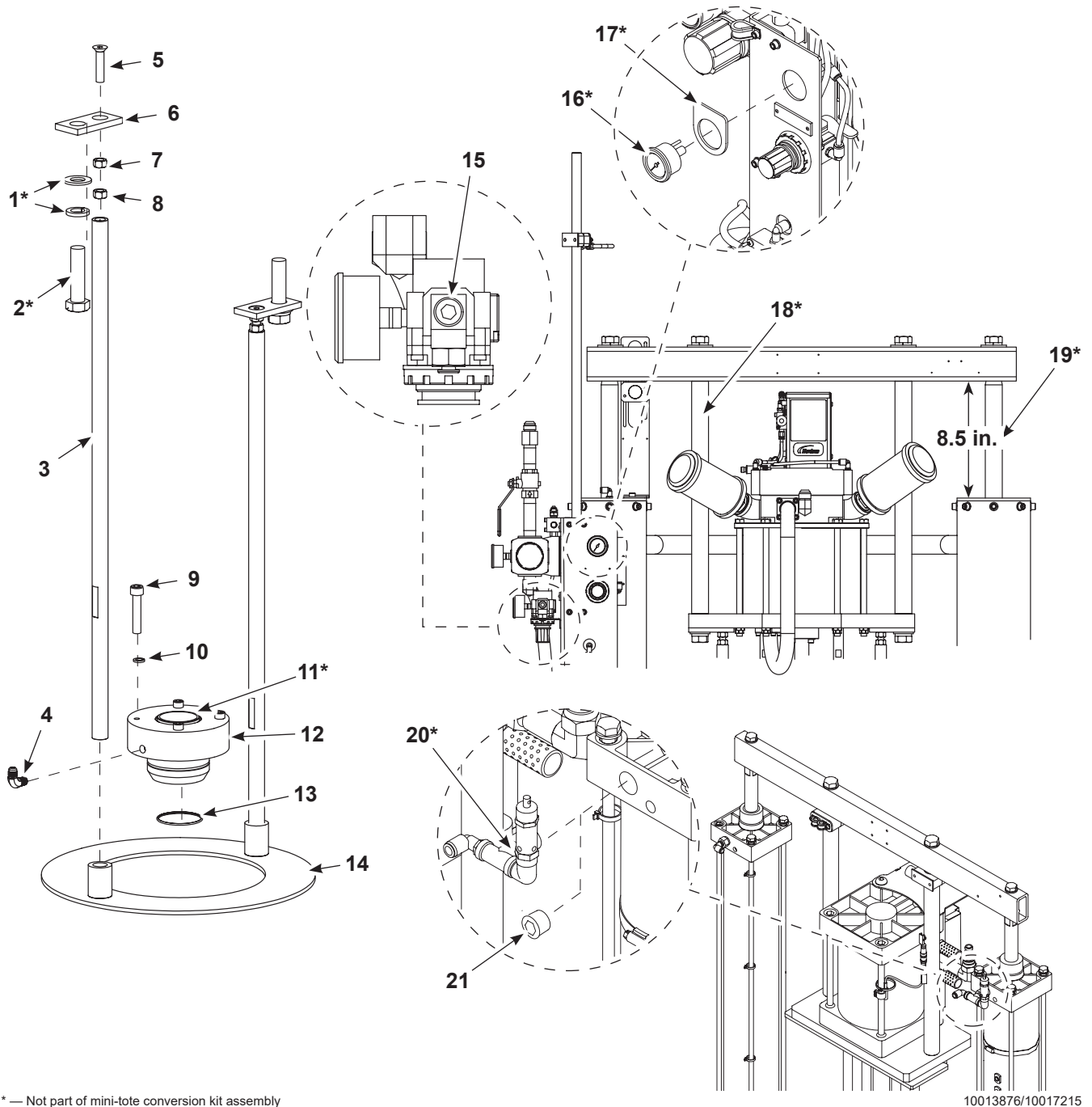


Figure 2 Installing the Mini-Tote Conversion Kit

**NOTE:** For clarity, some parts are enlarged or not shown.

- |                             |                              |                              |
|-----------------------------|------------------------------|------------------------------|
| 1. Hydraulic section washer | 8. Lower nut                 | 15. $\frac{3}{8}$ pipe plug  |
| 2. Hydraulic section bolt   | 9. Socket head screw         | 16. Pressure gauge           |
| 3. Connecting rod           | 10. Lock washer              | 17. Max Pressure tag         |
| 4. Elbow                    | 11. Hydraulic section O-ring | 18. Vertical rod             |
| 5. Flat head screw          | 12. Adapter                  | 19. Empty limit sensor block |
| 6. Connecting rod plate     | 13. O-ring                   | 20. Pressure relief valve    |
| 7. Upper nut                | 14. Push ring                | 21. $\frac{1}{4}$ pipe plug  |

## Adjusting the Empty Sensor (If Equipped)

See Figure 3. Adjust the empty sensor (1) by loosening the set screws (2) and moving the bottom of the magnetic sensor to 2.375 in. from the top of the cylinder base. Tighten the set screws (2) to secure the empty sensor in place.

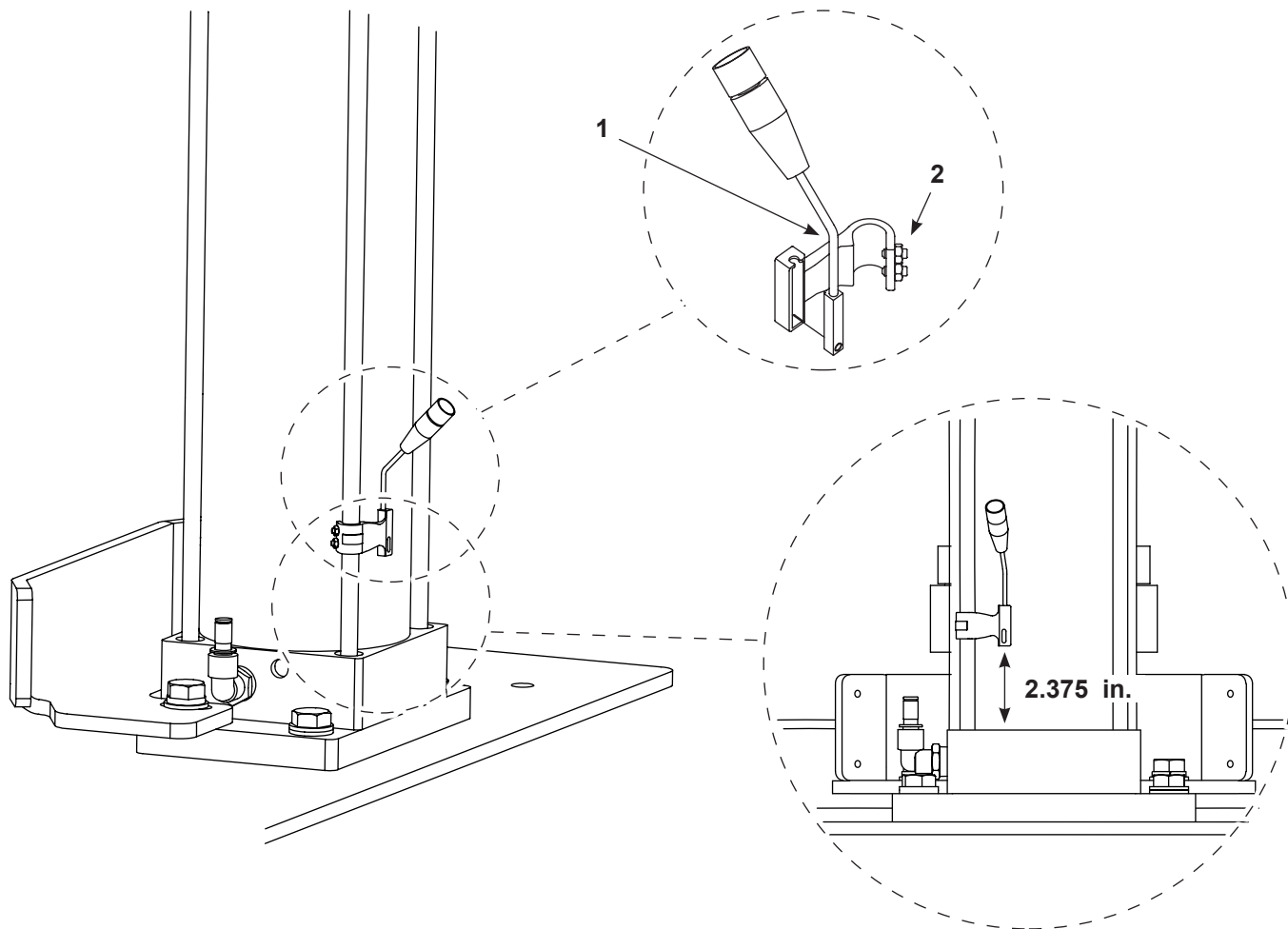


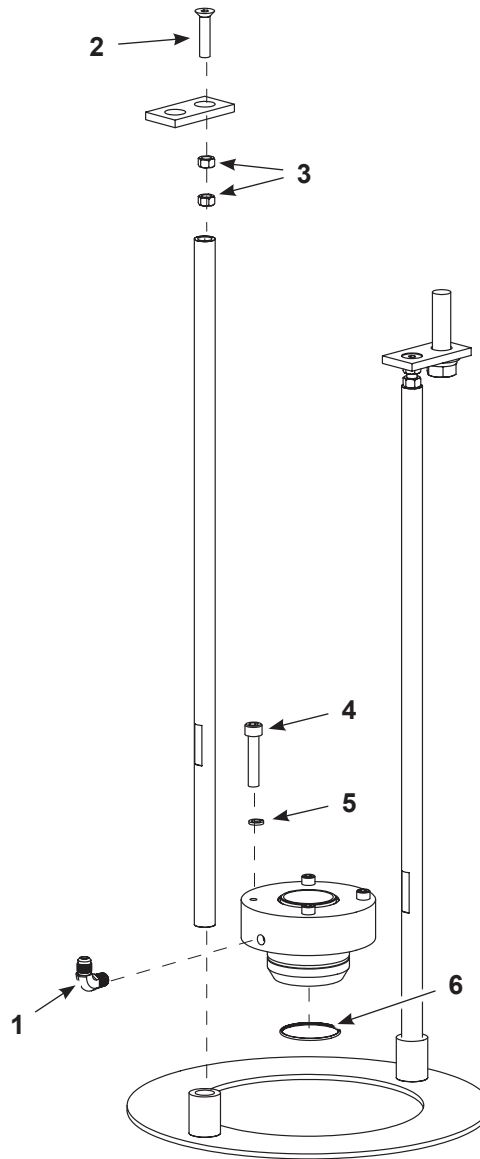
Figure 3 Adjusting the Empty Sensor

## Parts

To order parts, call the Nordson Industrial Coating Customer Support Center at (800) 433-9319 or contact your local Nordson representative.

### Mini-Tote Conversion Kit

See Figure 4 and refer to the following parts list.



10013876/10017215

Figure 4 Mini-Tote Conversion Kit

## 6 Rhino® SD2/XD2 Mini-Tote Conversion Kit

Item	Part	Description	Quantity	Note
—	1606581	KIT, conversion, mini-tote	1	
—	1614787	KIT, conversion, mini-tote, 125 mm frame	1	
1	-----	• ELBOW, male, 37, ⅝-18 x ¼, steel	1	
2	-----	• SCREW, flat, socket, ½-13 x 3-½, blue, grade 5, per ISO 10642	2	
3	-----	• NUT, hex, reg, ½-13, steel, zinc, per ISO 7091	4	
4	-----	• SCREW, socket, M10 x 50, blue, Class 12.9, per ISO 4762	4	
5	-----	• WASHER, lock, M10, steel, zinc, per ISO 7089	4	
6	942390	• O-RING, Viton™, 3.625 x 3.875 x 0.125	1	
NS	973422	• PLUG, pipe, socket, flush, ⅜, zinc	1	
NS	973410	• PLUG, pipe, socket, standard, ¼, zinc	1	A

NOTE: A. 1614787 conversion kit only.

NS: Not Shown

## Consumable Items

Item	Part	Application
Pipe/Thread/Hydraulic Sealant (PST)	900481	Apply to threads of applicable parts
Loctite® Threadlocker Red 271®	900439	
Loctite Threadlocker Blue 242®	900464	
Mobil® SHC™ 100, synthetic grease	1001849	Lubricate O-rings

Issued 10/20

Original copyright date 2020. Rhino, Nordson, and the Nordson logo are registered trademarks of Nordson Corporation.

All other trademarks are the property of their respective owners.