

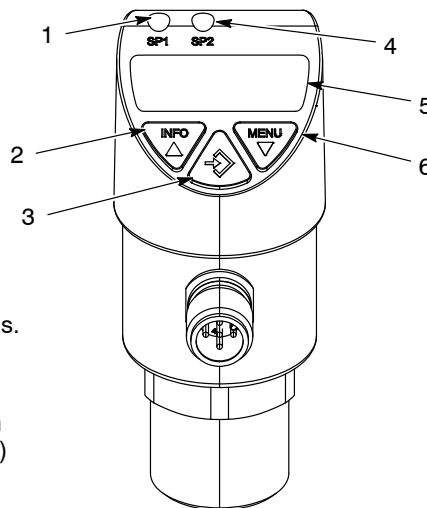
Rhino® SD2/SD3 Pressure Switch for PLC and Ethernet Applications

Description

The Rhino® SD2/SD3 pressure switch detects air pressure to the air motor. The pressure switch sends a signal to the controller indicating the pump is active. The pressure switch has two operating modes: the *display mode* and the *programming mode*. The function of the keys depends on the selected operating mode.

See Figure 1 and refer to the following table for a description of the pressure switch keys and functions.

NOTE: “Short press” equals three seconds; “long press” equals five seconds.



To enter the programming mode, press and hold the menu key (6) for five seconds.

To exit the programming mode and return to the display mode, press the info key (2) and menu key (6) simultaneously.

1612923

Figure 1 Pressure Switch Keys

Item	Pressure Switch Key	Function
1	Status Switching Output 1	
2	Info Key Display Mode	Short press: displays unit Long press: displays set of parameters
	Info Key Programming Mode	Short press: menu up/parameter value up (step-wise) Long press: menu up/parameter value up (fast)
3	Enter Key Display Mode	Short press: displays unit
	Enter Key Programming Mode	Short press: select menu item/confirm input
4	Status Switching Output 2	(optional)
5	Four-Digit LED Display	Displays menu item/parameter/pressure value
6	Menu Key Display Mode	Short press: displays unit Long press: enters the programming mode
	Menu Key Programming Mode	Short press: menu up/parameter value up (step-wise) Long press: parameter value down (fast)

Parts

To order parts, call the Nordson Industrial Coating Systems Customer Support Center at (800) 433-9319 or contact your local Nordson representative.

See Figure 2 and refer to the following parts list.

Pressure Switch, 1/4-in. Tubing

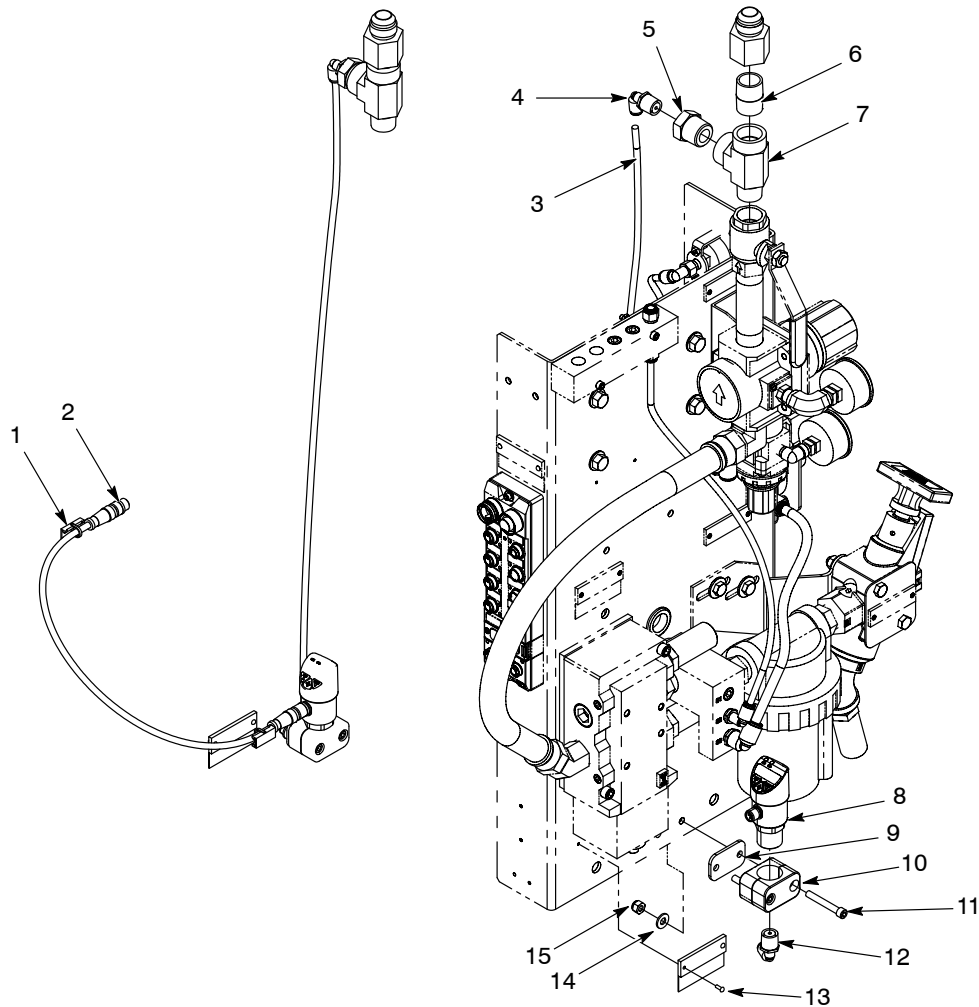


Figure 2 Pressure Switch, 1/4-in Tubing

Item	Part	Description	Quantity	Note
—	1612922	MODULE, pressure switch, A-B, 24 Vdc	1	
1	-----	• CABLE TIE, 3.9 in., nylon	2	
2	1046023	• CABLE ASSEMBLY, 4 conductor, 1 m, male/female, 22 AWG, 250 V	1	
3	-----	• TUBING, ¼ OD, polyurethane, flame resistant	3	
4	972216	• ELBOW, male, ½ tube x ¾ NPT	1	
5	973417	• BUSHING, pipe, hydraulic, ¾ x ¾, steel, zinc	1	
6	973692	• NIPPLE, brass, ¾ close	1	
7	228628	• TEE, street, ¾ NPT	1	
8	1612923	• SWITCH, pressure, A-B, 0–145 psi, 24 Vdc	1	
9	-----	• PLATE, cover, clamp	1	
10	-----	• CLAMP, standard, 25.3 mm	1	
11	-----	• SCREW, socket, ¼ – 20 x 1.750, zinc, Grade 8, per ISO 4762	2	
12	971266	• ELBOW, male, 0.25 tube x 0.25 NPT	1	
13	-----	• SCREW, drive, round, 4 x 0.312, zinc	2	
14	-----	• WASHER, flat, reg, ¼, zinc, per ISO 7089	2	
15	-----	• NUT, lock, nylock, ¼ – 20, Class 8, per ISO 980	2	
NS	900481	• ADHESIVE, pipe/thread/hydraulic sealant	AR	
AR: As Required				
NS: Not Shown				

Pressure Switch, 6-mm Tubing

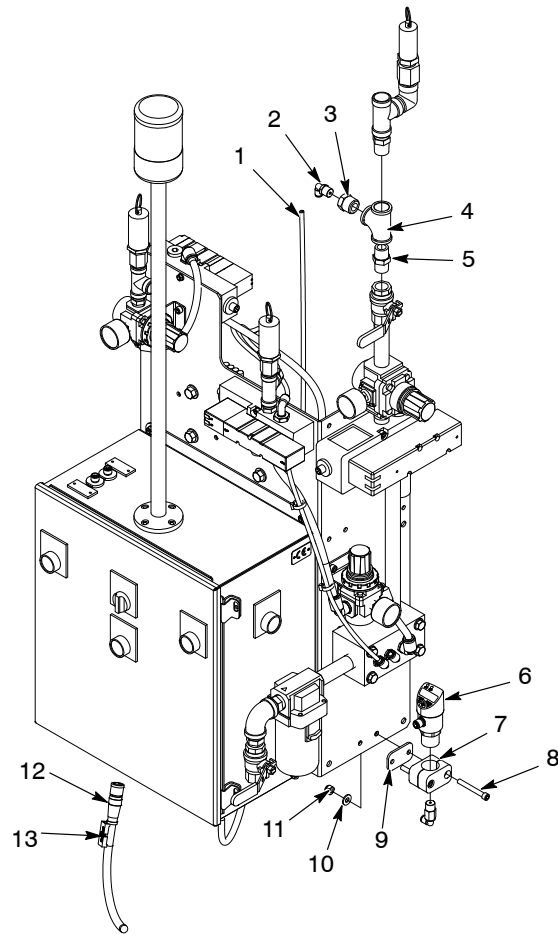


Figure 3 Pressure Switch

Item	Part	Description	Quantity	Note
—	1613461	MODULE, pressure switch, A-B, 24 Vdc, 6 mm	1	
1	1082731	• TUBING, 6 mm, nylon, blue, flame resistant	4	
2	1605532	• CONNECTOR, male, elbow, 6 mm T x ¼ RPT, w/ sealant	2	
3	-----	• BUSHING, pipe, hydraulic, ½ R x ¼ RC, stainless steel	1	
4	-----	• TEE, pipe, R ½, galvanized	1	
5	-----	• NIPPLE, hex, R ½ x R ½, steel	1	
6	-----	• SWITCH, pressure, A-B, 0-145 psi, 24 Vdc	1	
7	-----	• CLAMP, Stauff®, standard, 25.4 mm, profiled	1	
8	-----	• SCREW, socket, ¼-20 x 1.750, zinc, Grade 8, per ISO 4762	2	
9	-----	• PLATE, cover, Stauff clamp, group 3	1	
10	-----	• WASHER, flat, regular, ¼, zinc, per ISO 7089	2	
11	-----	• NUT, lock, nylock, ¼-20, Class 8, per ISO 980	2	
12	1046023	• CABLE ASSEMBLY, 4 conductor, 1 M, male/female, 22 AWG, 250 V	1	
13	939110	• CABLE TIE, 3.9 in., 185 °F/85 °C, nylon, natural	2	
NS	900481	• ADHESIVE, pipe/thread/hydraulic sealant	AR	
AR: As Required				
NS: Not Shown				

This page intentionally left blank.

Issued 04/19

Original copyright date 2019. Rhino, Nordson, and the Nordson logo are registered trademarks of Nordson Corporation.

All other trademarks are the property of their respective owners.