

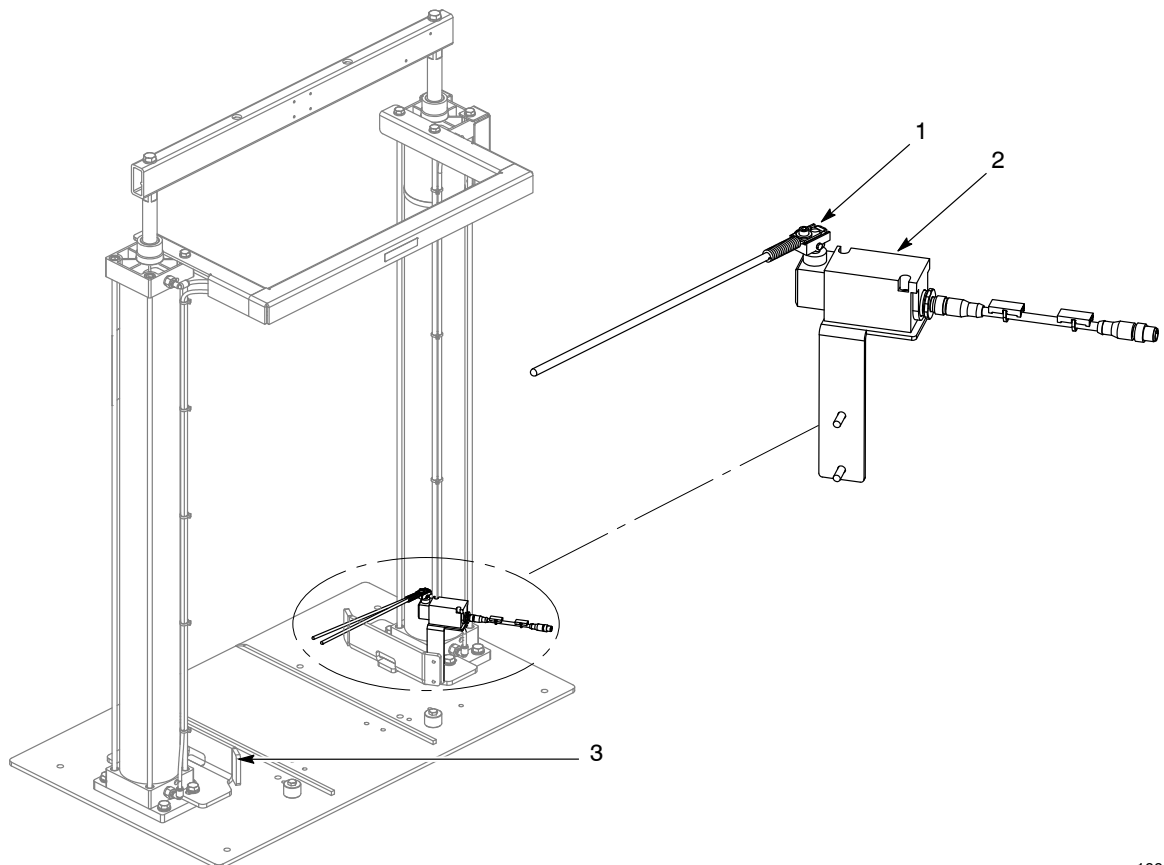
# Rhino<sup>®</sup> SD2/XD2 Container-in-Position Sensor

## Description

See Figure 1. The Rhino<sup>®</sup> SD3/XD3 container in-position sensor (2) provides a signal to the system controller to verify that a container is in position below the follower plate or heated platen. When a container is placed between the frame material container guides (3), it makes contact with the whisker (1) and closes a circuit to the system controller.

**Rotary Valve Ram Control:** If the whisker (1) does not detect a container, the air supply to the pump is shut off, disabling the pump. Also, a major fault is given at the system controller.

**Two-Hand Down Ram Control:** Ram movement during normal operation is automatic once the follower plate or heated platen is inside the container. If the whisker (1) does not detect a container, ram movement needs to be manually controlled using the two-hand ram control buttons. Also, a major fault is given at the system controller.



10017076

Figure 1 Container In-Position Sensor

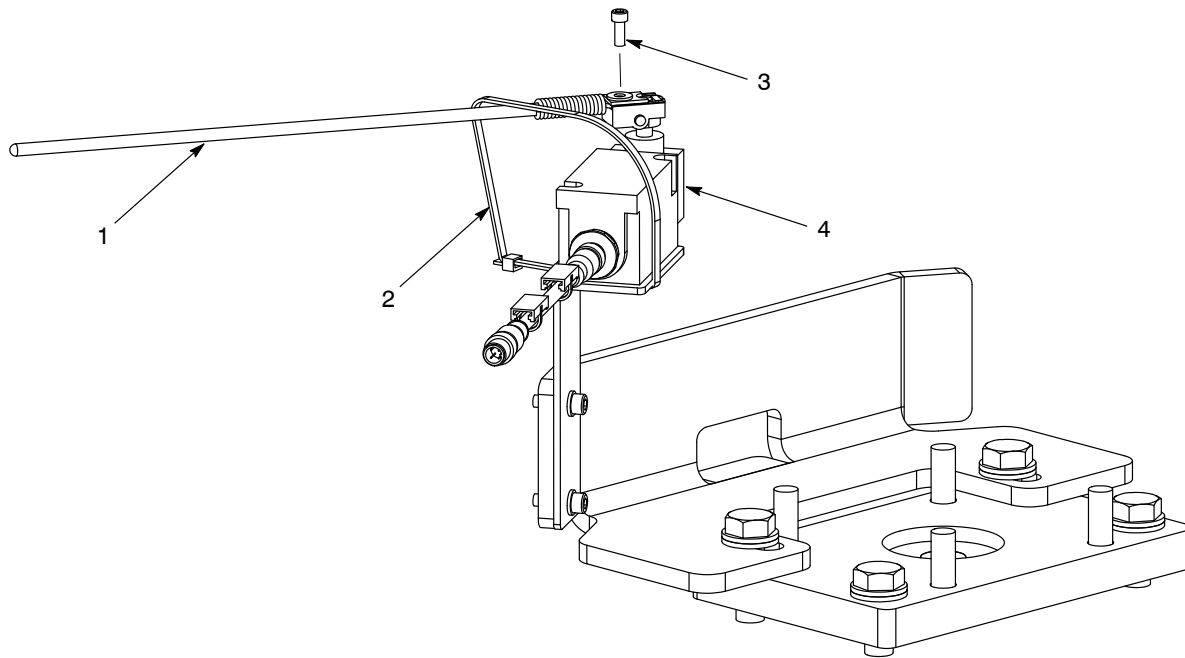
## Limit Switch Adjustment



**WARNING:** Allow only qualified personnel to perform the following tasks. Follow the safety instructions in this document and all other related documentation.

See Figure 2 and perform the following procedure if the limit switch needs adjusted.

1. Position the whisker (1) as close to the center of the container follower plate as possible.
2. Finger tighten the whisker screw (3) and lightly swing the whisker (1) left and right; listen for the limit switch (4) to click. If the whisker does not make a clicking sound, loosen the whisker and readjust until a click is heard. Then, fasten the whisker into place.
3. Swing the whisker (1) in line with the limit switch (4) and use a cable tie (2) to strap it to the limit switch to prevent any interference with the unloader components.



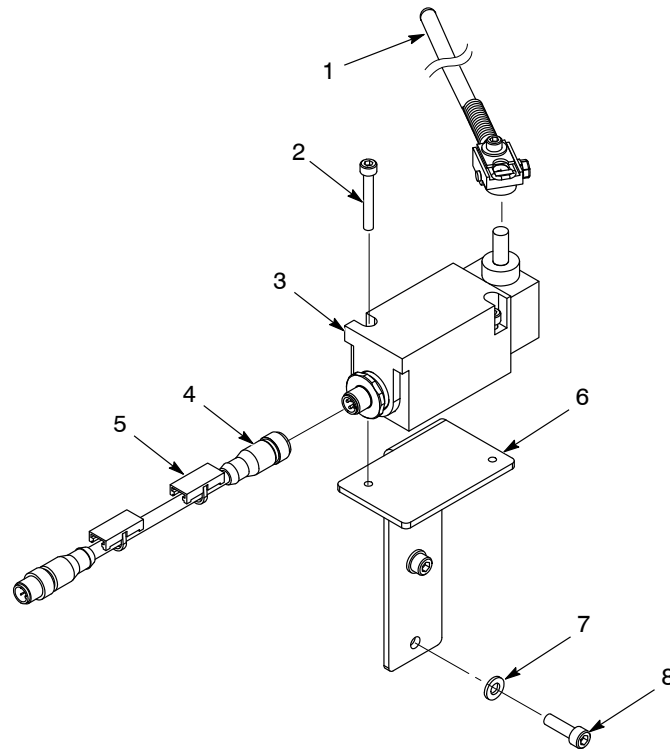
10016808

Figure 2 Adjusting the Limit Switch

## Parts

To order parts, call the Nordson Industrial Coating Systems Customer Support Center at (800) 433-9319 or contact your local Nordson representative.

See Figure 3 and refer to the following parts list.



10017076

Figure 3 Container In-Position Sensor

Item	Part	Description	Quantity	Note
—	1612611	MODULE, switch, in-position, container	1	
1	1062089	• LEVER, rod, nylon, 12 in.	1	
2	-----	• SCREW, socket, M5 x 0.8 x 25, Class 12.9, per ISO 4762	2	
3	1612696	• SWITCH, limit, with receptacle, lever	1	
4	1612643	• CABLE, 4-pin, micro DC, 1 m, male/female, 18 AWG	1	
5	-----	• CABLE TIE, 3.9 in., 185 F/85 C, nylon, natural	2	
6	1612612	• BRACKET, mount, limit switch, in position, drum	1	
7	-----	• WASHER, flat, M, reg, steel, zinc, M6 x 1 x 20, per ISO 7089	2	
8	-----	• SCREW, cap, socket thread, M6 x 20 mm, steel, zinc, Class 12.9, per ISO 4762	2	
NS	-----	• STRAP, cable, black	4	
NS: Not Shown				

Issued 4/18

Original copyright date 2018. Rhino, Nordson, and the Nordson logo are registered trademarks of Nordson Corporation.

All other trademarks are the property of their respective owners.